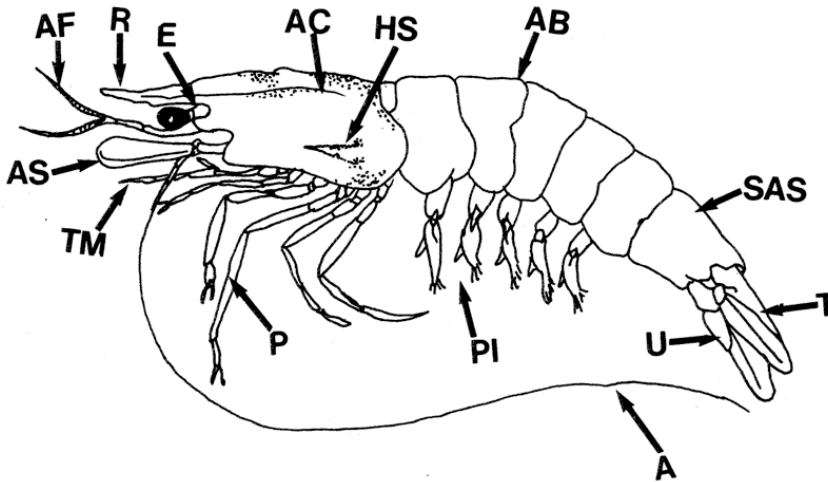


Crustaceans

Prawn

The common names 'prawn' and 'shrimp' are often used synonymously for the same crustaceans in different parts of the world. This field guide uses the terms most commonly used in Australia. Where Australian species of crustaceans are primarily involved in the disease, they are referred to as prawns. However, where the species of crustacean involved in the disease are exotic to Australia, they are referred to as shrimp.

External anatomy of a prawn



A = antenna; AB = abdominal segment; AC = adrostral carina; AF = antennular flagellum; AS = antennal scale; E = eyestalk; HS = hepatic spine; P = pereopod; PI = pleopod; R = rostrum; SAS = sixth abdominal segment; T = telson; TM = third maxilliped; U = uropod

Source: Illustration © State of Queensland, Department of Primary Industries and Fisheries, 2008 (illustrator: R Bowater)

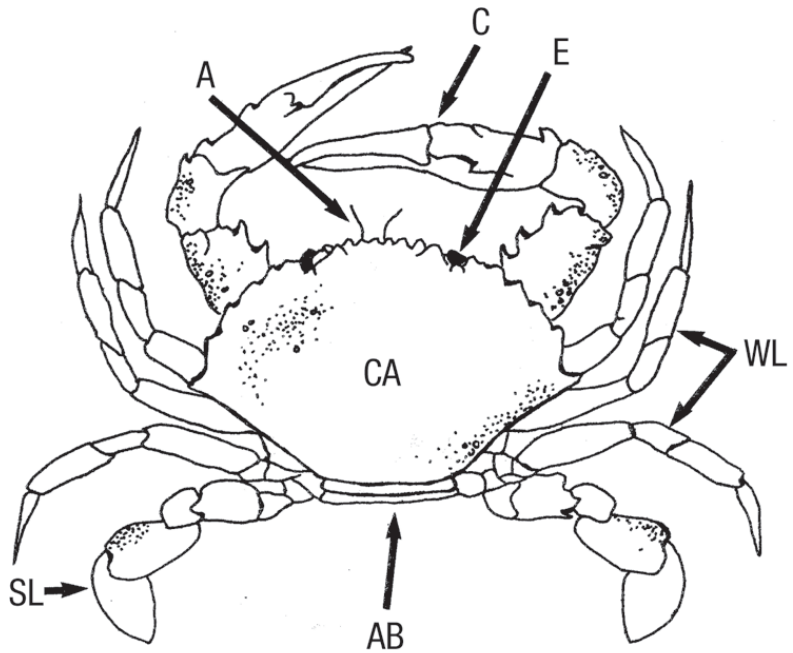
Black tiger prawn (*Penaeus monodon*)



Source: Aquatic Animal Health Program, Animal Health Policy, Australian Government Department of Agriculture, Fisheries and Forestry

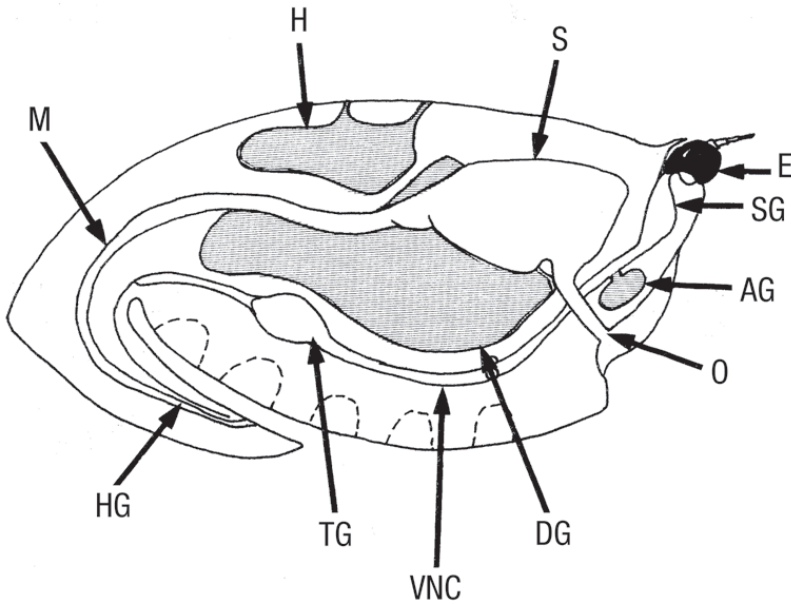
Crab

External anatomy of a crab



A = antenna; AB = abdomen (underneath); C = claw; CA = carapace; E = eye; SL = swimming leg; WL = walking leg
Source: Illustration © State of Queensland, Department of Primary Industries and Fisheries, 2008 (illustrator: R Bowater)

Internal anatomy of a crab: saggital section (cut down the centre and looking side on)



AG = antennal gland; DG = digestive gland; E = eye; H = heart; HG = hindgut; M = midgut; O = oesophagus; S = stomach; SG = supraoesophageal ganglion; TG = thoracic ganglion; VNC = ventral nerve cord

Source: Illustration © State of Queensland, Department of Primary Industries and Fisheries, 2008 (illustrator: R Bowater)

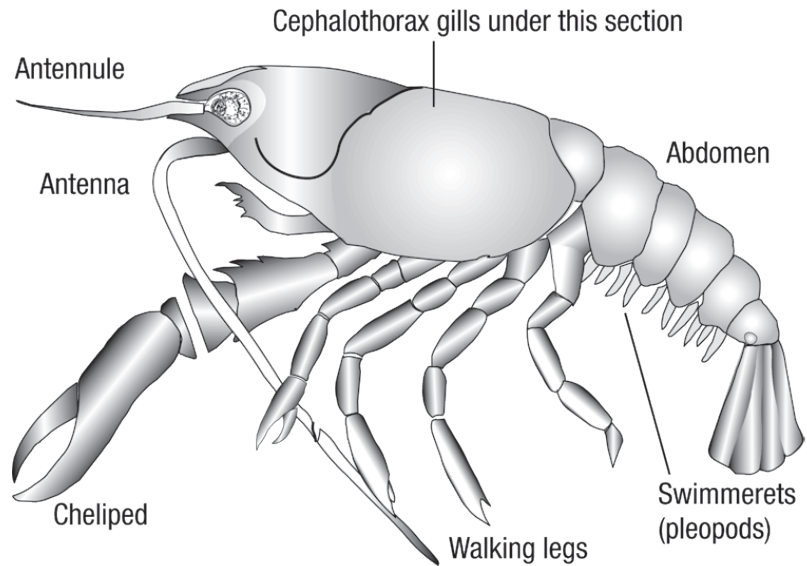
Blue swimmer crab (*Callinectes sapidus*) with carapace removed, revealing internal structure



Source: O Zmora

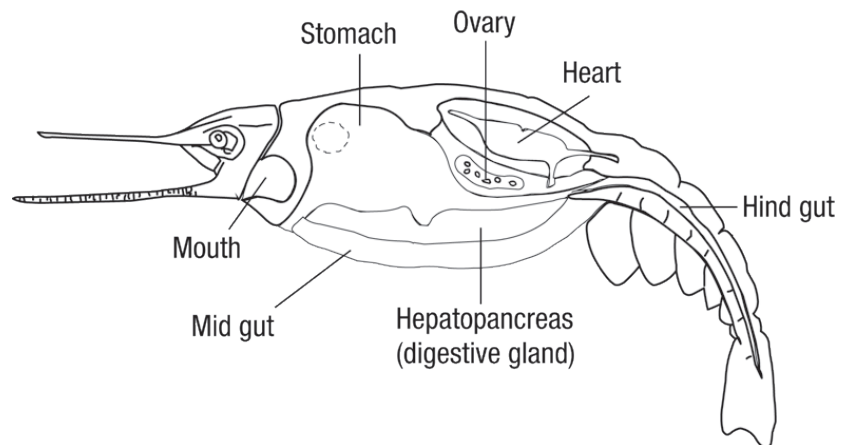
Crayfish

External anatomy of a freshwater crayfish



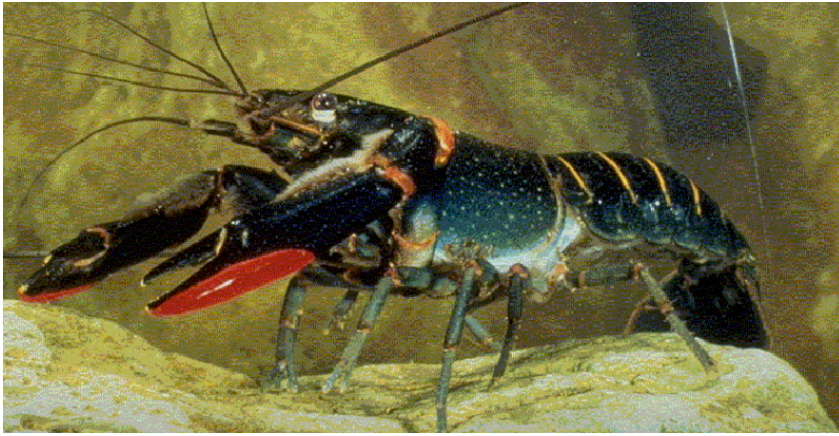
Source: Aquatic Animal Health Program, Animal Health Policy, Australian Government Department of Agriculture, Fisheries and Forestry

Internal organs in section



Source: Aquatic Animal Health Program, Animal Health Policy, Australian Government Department of Agriculture, Fisheries and Forestry

Redclaw crayfish (*Cherax quadricarinatus*)



Source: C Jones

Redclaw crayfish (*Cherax quadricarinatus*) with section of carapace removed, revealing location of the gills



Source: C Jones
