



Australian Government

Department of Agriculture  
and Water Resources

# Land use information for Australia



Land use information shows how we use the landscape—whether that is for food production, forestry, nature conservation, water storage or urban development. It provides the location, extent, and ability to track change in land use over time. This informs, supports and enables innovation and action in response to economic, social and environmental challenges.

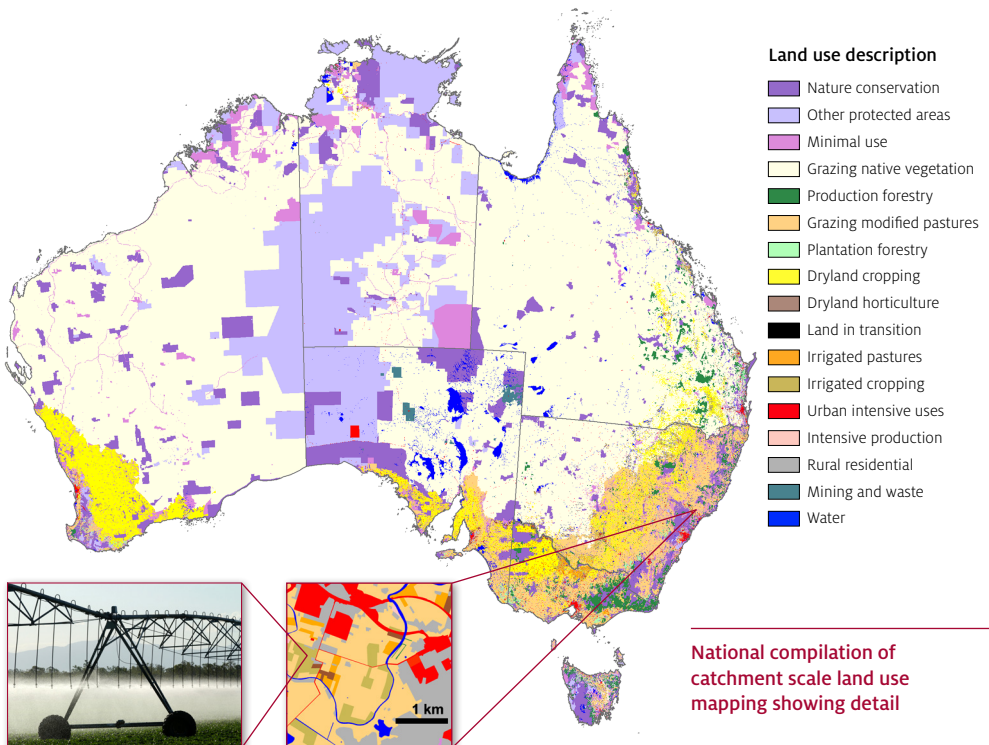
## Using land use information

Land use information is in demand to address issues such as:

- **agricultural productivity and sustainability**—profitable production of food and fibre, adoption of sustainable agricultural practices
- **biodiversity conservation**—managing and mitigating the impact of production systems on terrestrial, aquatic, coastal and marine habitats
- **biosecurity**—managing invasive species and minimising the impact of incursions, managing weeds and feral animals and their impact on threatened species and agriculture, and evaluating the risk of disease spread in crops and livestock
- **land use planning**—supporting regional planning and investment, and strategies for development
- **natural disaster management**—preparing for, responding to, and evaluating the impact of events such as floods, cyclones, bushfires and drought
- **natural resource condition monitoring and investment**—setting soundly based targets and monitoring procedures for natural resource investment at national, state, regional and local levels of responsibility.

## Land use products

- **Catchment scale land use data** Detailed mapping is undertaken by state and territory agencies according to national guidelines. Land use is classified by its prime use using a hierarchical structure. This allows land uses to be attributed as broad classes down to individual commodities where possible. The data are then compiled and published annually to create a composite national dataset of the most recent mapping. The catchment scale land use mapping coverage is available for mixed dates at a scale that varies according to the intensity of land use activities and landscape context.
- **National scale land use data** A modelling approach is employed to allocate agricultural land use based on satellite data, the Australian Bureau of Statistics agricultural statistics and control points of known land uses. The dataset is produced every five years following the release of the Australian Bureau of Statistics Agricultural Census, providing a national scale distribution of Australia's agricultural production systems with a resolution of 1.1 km<sup>2</sup>.
- **Guidelines for land use mapping in Australia** This technical handbook promotes the collection of nationally consistent data on land use, land cover and land management practices, as well as information products, standards, analyses and assessments. It is also the primary reference for the Australian Land Use and Management Classification and outlines nationally agreed principles and procedures adopted as the basis for mapping at both the catchment and national scale.



# Authoritative datasets

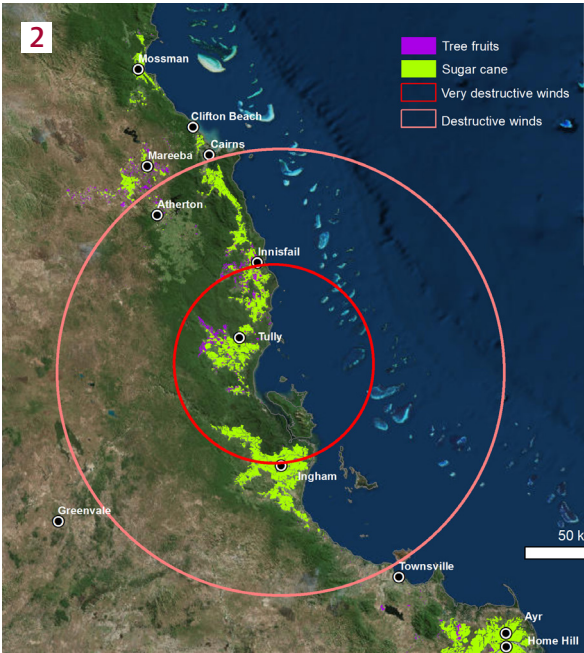
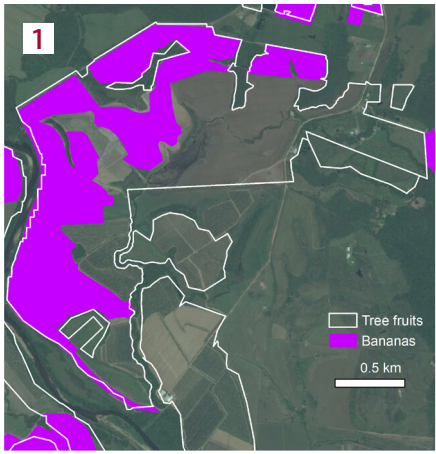
The land use datasets are recognised as Foundation Spatial Datasets by the Australia New Zealand Land Information Council; Essential Statistical Assets for Australia by the Australian Bureau of Statistics; and an Australian Government Environmental Information Requirement by the Australian Government Environmental Information Advisory Group.

# Delivered by ACLUMP

The Australian Collaborative Land Use and Management Program (ACLUMP) promotes the development of consistent information on land use and land management practices. This consortium of Australian, state and territory government partners is critical to providing nationally consistent land use mapping at both catchment and national scale, underpinned by common technical standards. ACLUMP provides a national land use data directory and the maintenance of land use datasets on Australian and state government data repositories. These provide the basis for regional and national reporting of land use and land management practices, including change reporting and integrated assessments.

## Land use applications

- 1. Biosecurity—mapping to commodity level to manage a disease outbreak in bananas (2015)
- 2. Natural disaster management—industries worst affected by Tropical Cyclone Yasi (2011)
- 3. Crop damage from Tropical Cyclone Yasi





## Further information

Download the ACLUMP products and land use data at [agriculture.gov.au/landuse](http://agriculture.gov.au/landuse)

## ACLUMP partners



**Australian Government**  
**Department of Agriculture**  
**and Water Resources**  
**Bureau of Meteorology**  
**Geoscience Australia**



**Government**  
**of South Australia**



**Tasmanian**  
**Government**



**Department of**  
**Agriculture and Food**



**Queensland**  
**Government**

**A product of the Australian Collaborative Land Use and Management Program**



**Freecall**  
 1800 900 090

**Postal address**  
 Manager, Land Information  
 Australian Bureau of Agricultural and  
 Resource Economics and Sciences,  
 Department of Agriculture and Water Resources  
 GPO Box 858, Canberra ACT 2601 Australia



[agriculture.gov.au/landuse](http://agriculture.gov.au/landuse)

**Email**  
[land\\_management@agriculture.gov.au](mailto:land_management@agriculture.gov.au)