



Australian Government

Department of Agriculture
and Water Resources

ABARES

Commodity outlook and issues

Tasmanian agriculture

Andrew Cameron – Agricultural Commodities

Australian Bureau of Agricultural
and Resource Economics and Sciences

8 May 2019



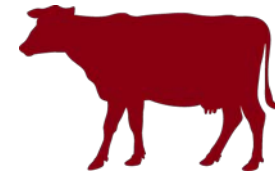
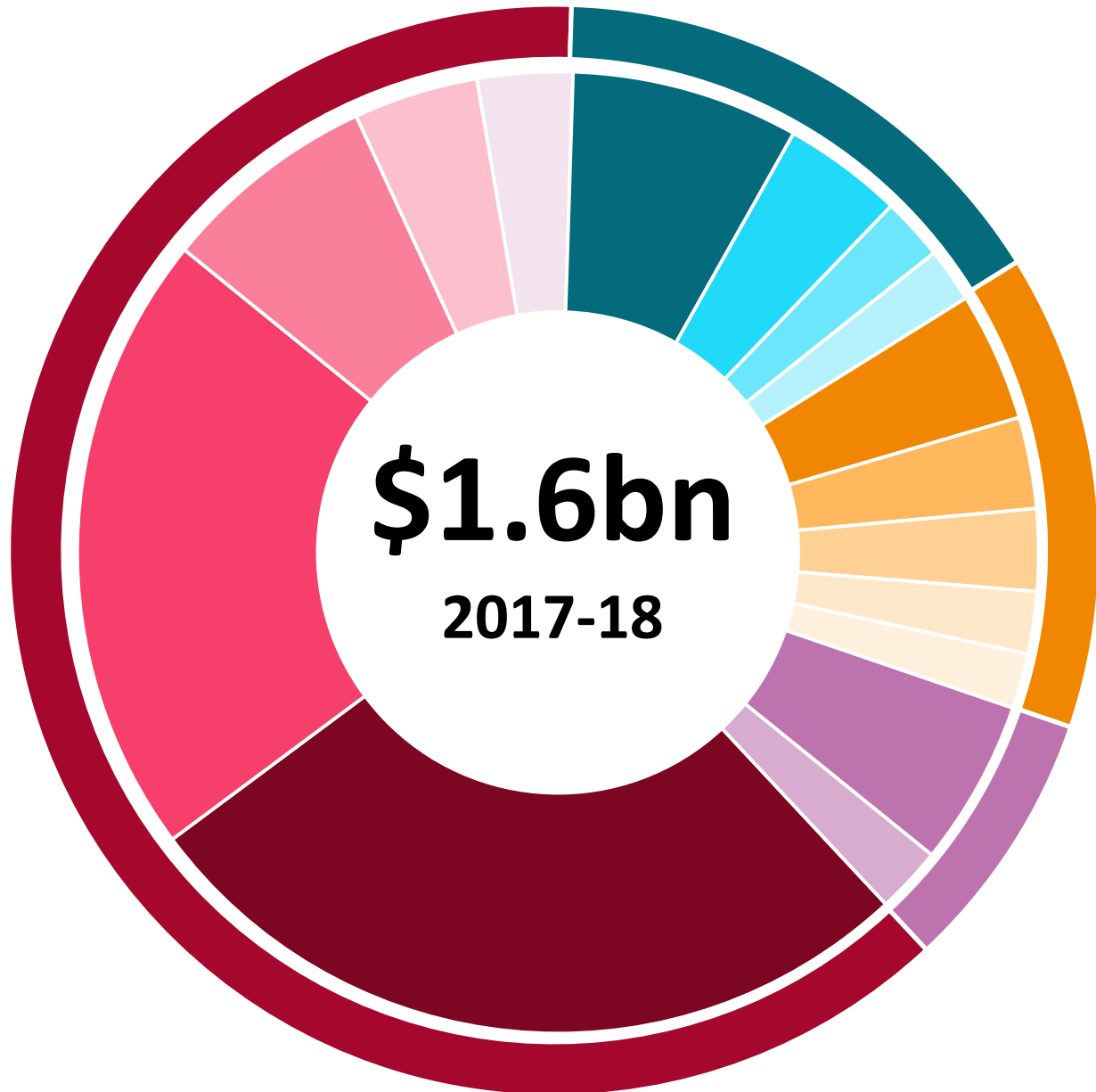


Tasmanian agriculture snapshot

Recent farm business performance

Outlook for key commodities

Tasmanian agriculture - snapshot



62%

- Milk
- Cattle & calves
- Wool
- Other livestock
- Sheep & lambs



16%

- Potatoes
- Other vegetables
- Onions
- Carrots



14%

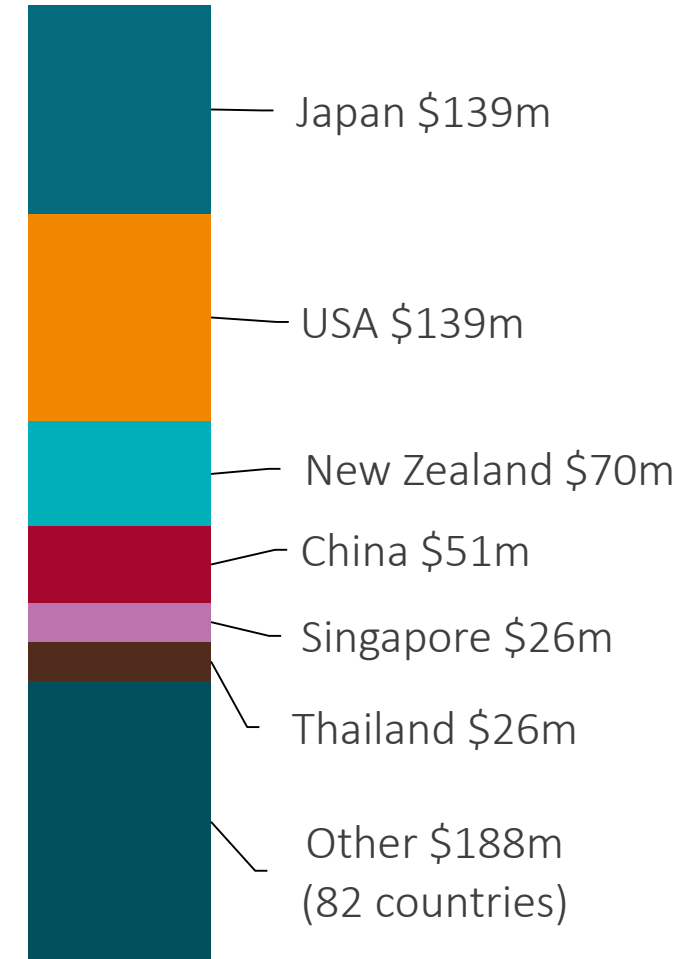
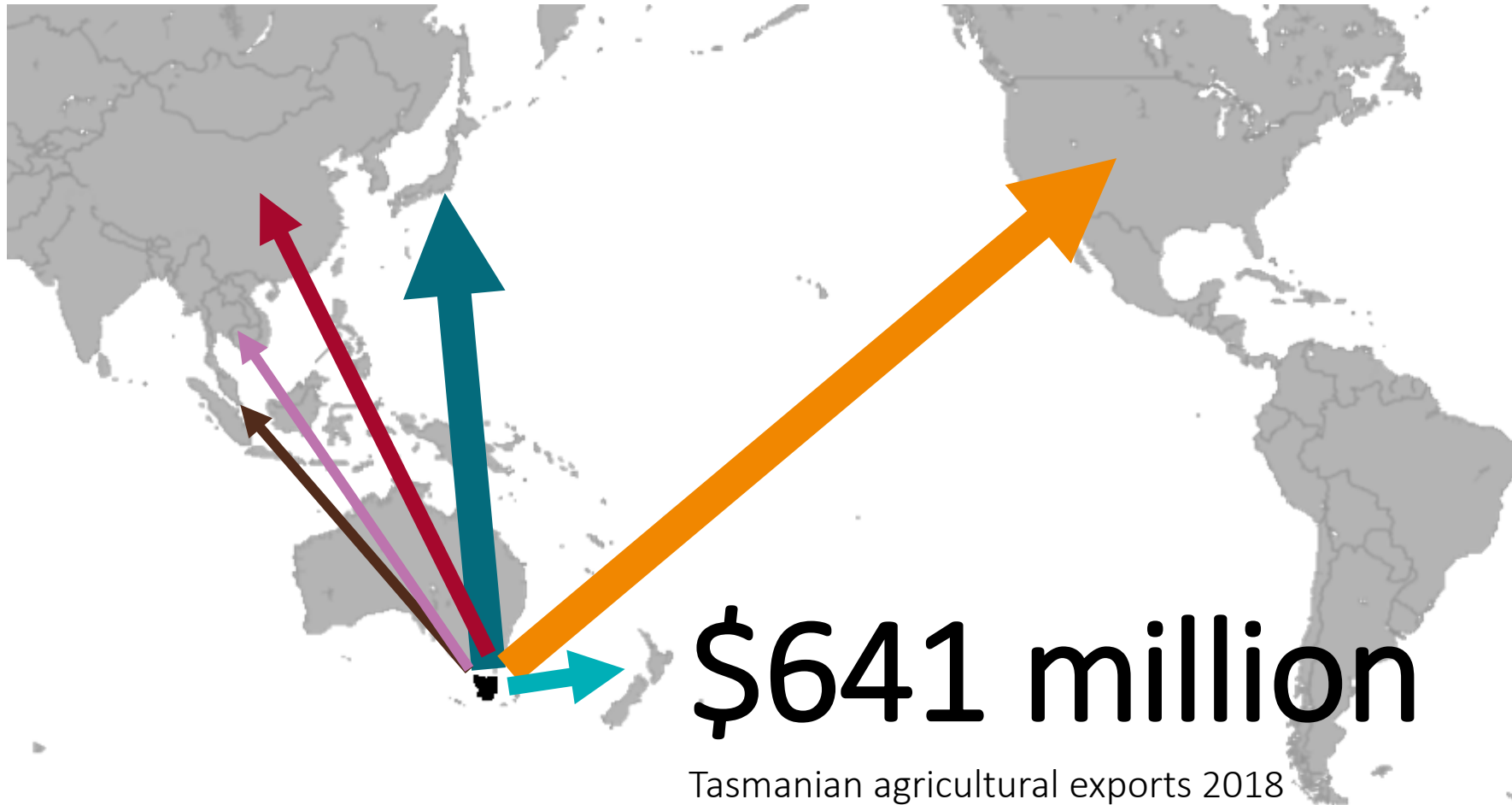
- Cherries
- Other fruit & nuts
- Apples
- Strawberries
- Grapes



8%

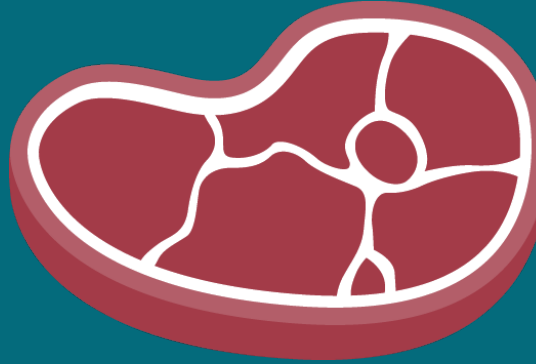
- Other crops
- Hay

Tasmania has diverse export markets



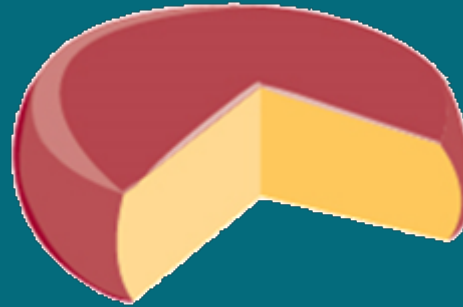
2018 Exports
(\$m)

Tasmanian exports to Japan



\$82 million

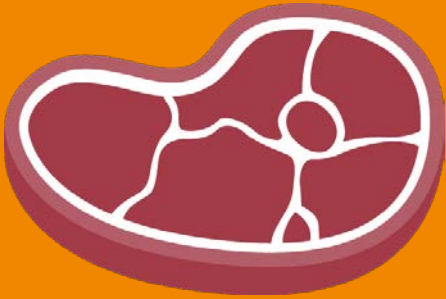
Beef exports



\$48 million

Cheese exports

Tasmanian exports to the USA



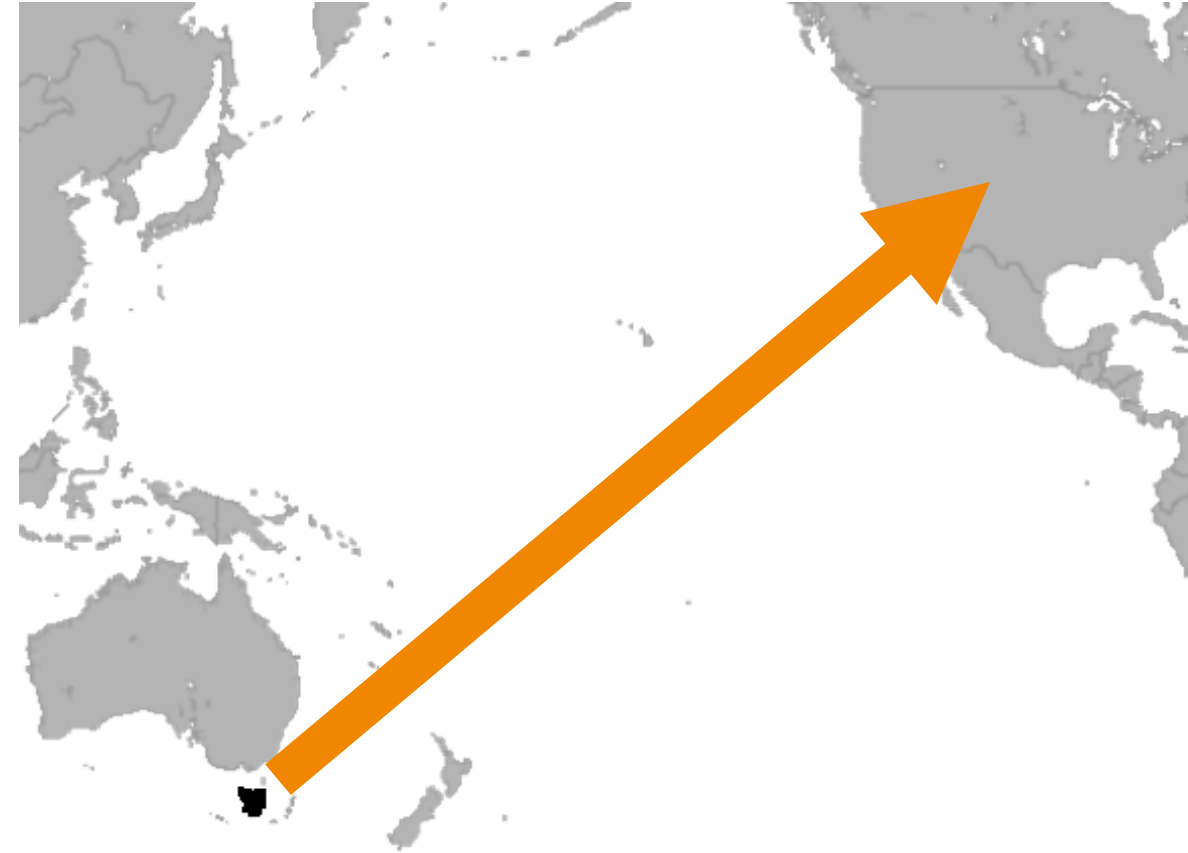
\$114 million

Beef exports

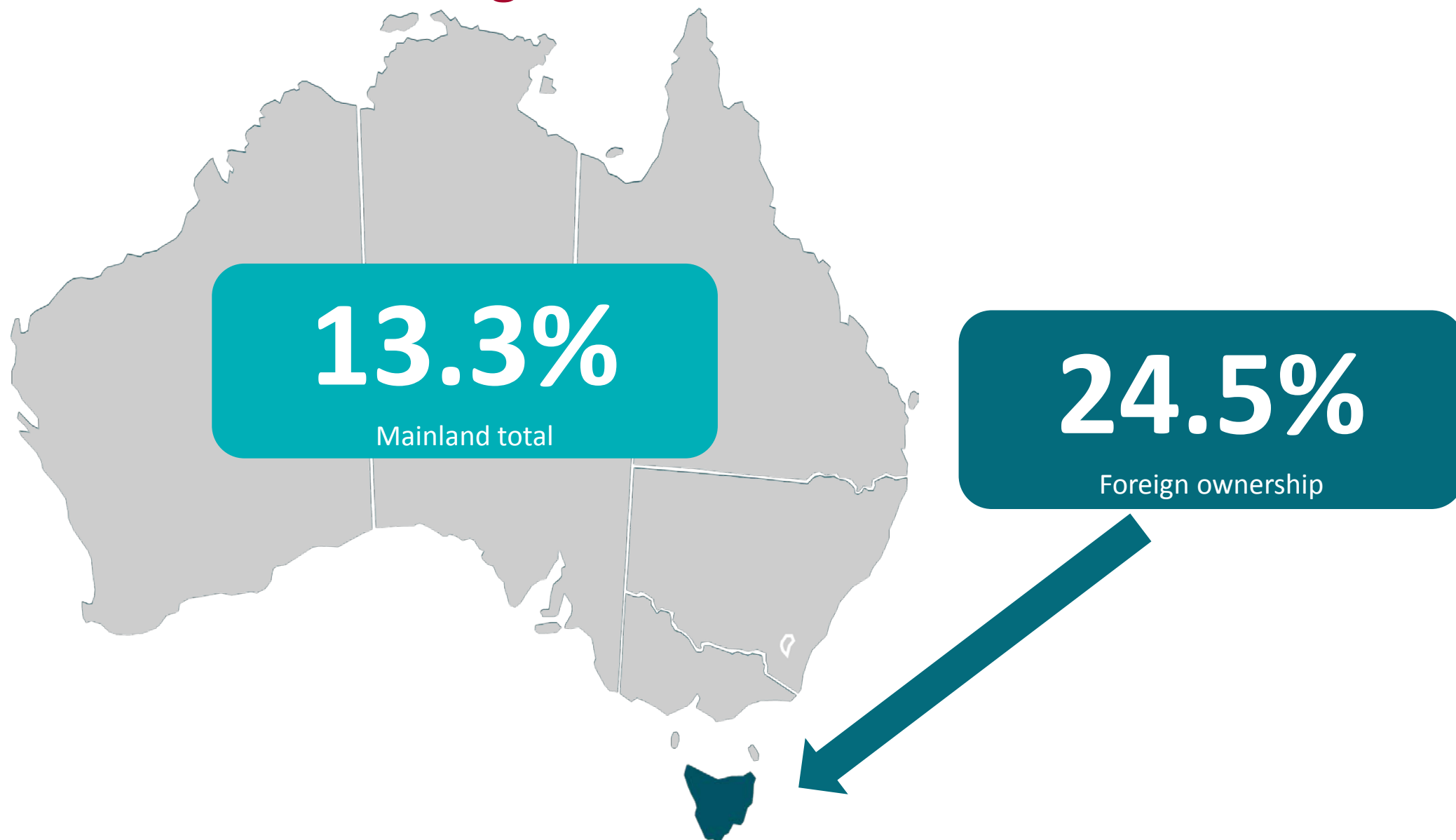


\$15 million

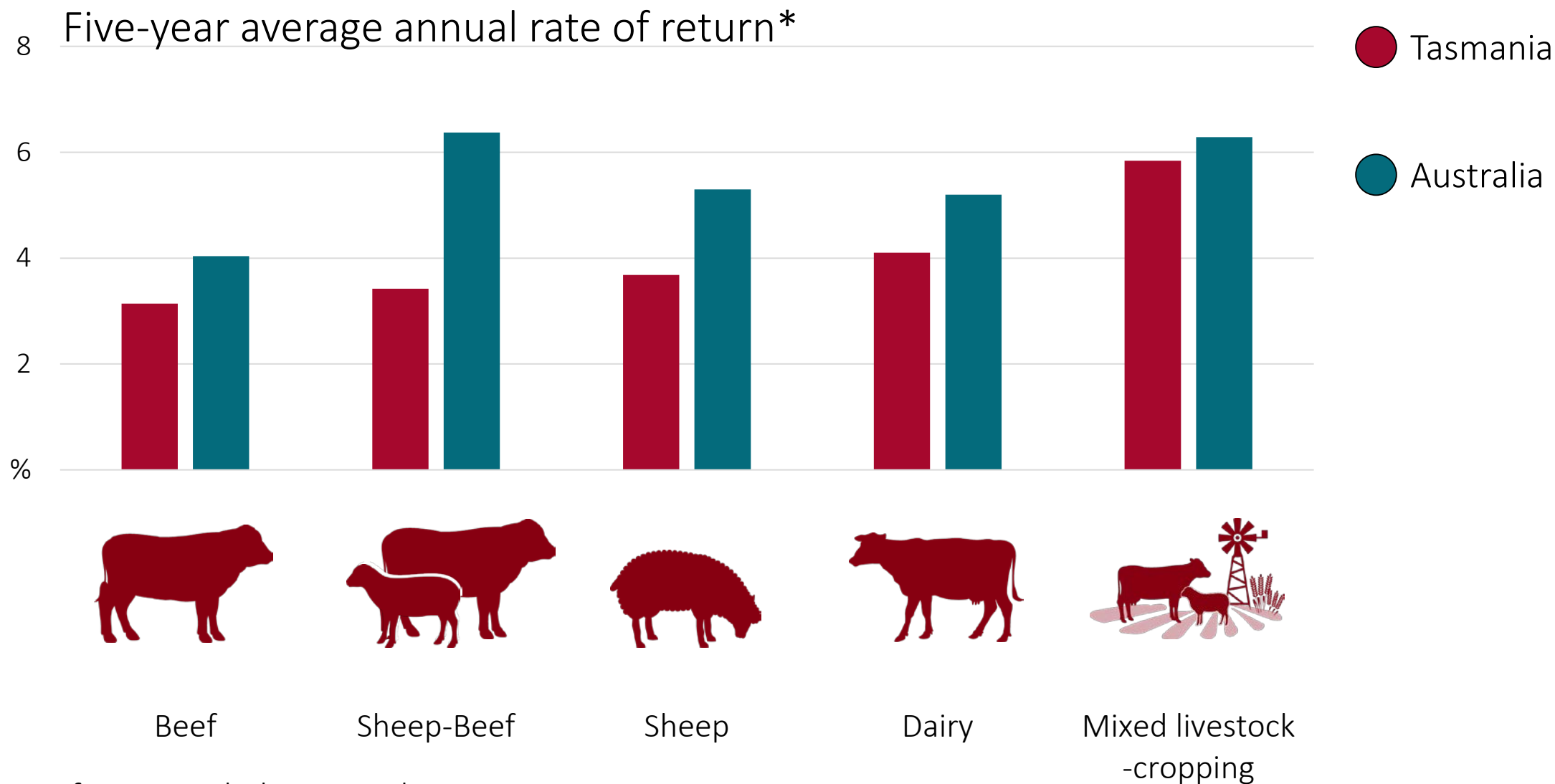
Hops exports



Tasmania attractive to foreign investment

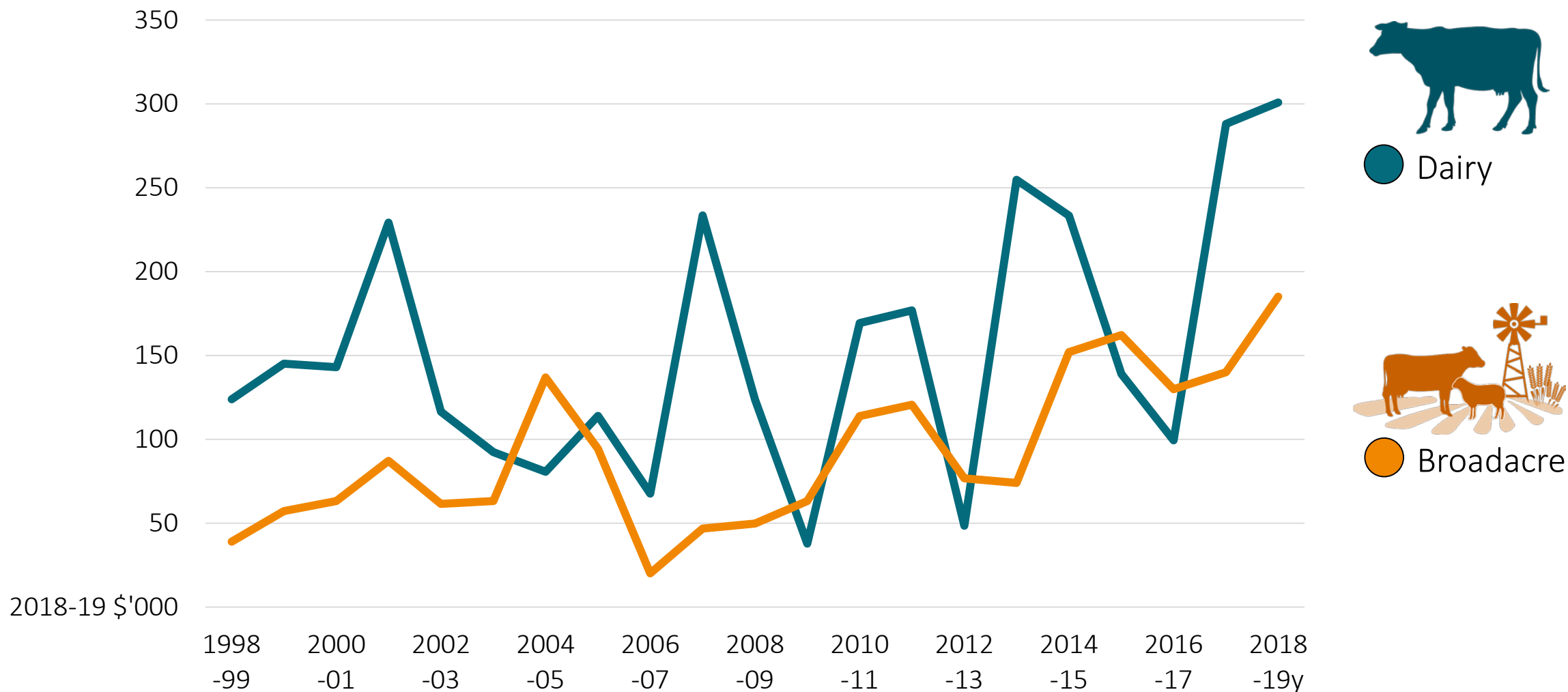


Recent returns to farming in Tas have been positive



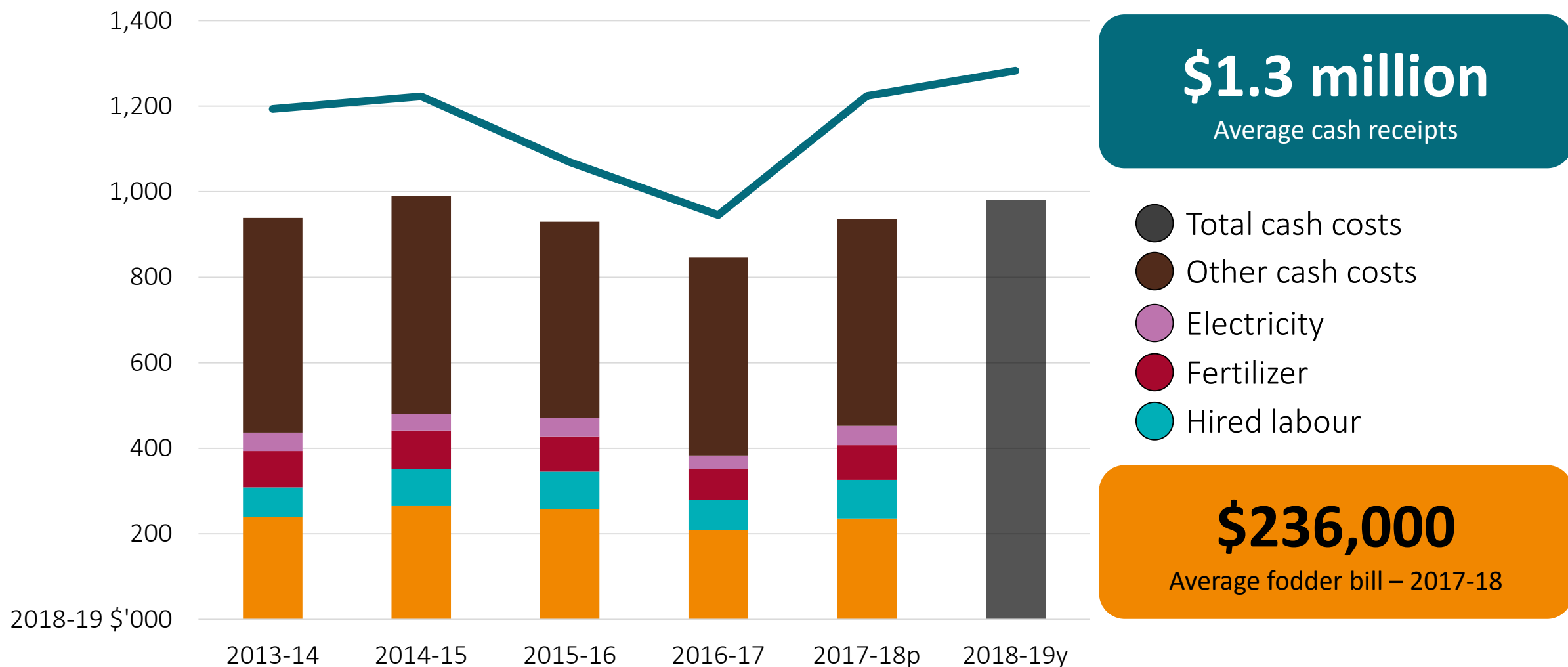
*Rate of return including capital appreciation.

Farm cash income performance has been good



y Provisional estimate.

Dairy farm financial performance drivers



p Preliminary estimates. y Provisional estimates.

Proportion of farms producing milk at a profit



79%

of farms produced
milk at a profit on
average since 2000-01

69%

of farms produced
milk at a profit in
2018-19

y Provisional estimate. Proportion produced by businesses covering all cash costs.

Proportion of milk produced at a profit



97%

Milk produced at a profit on average since 2000-01

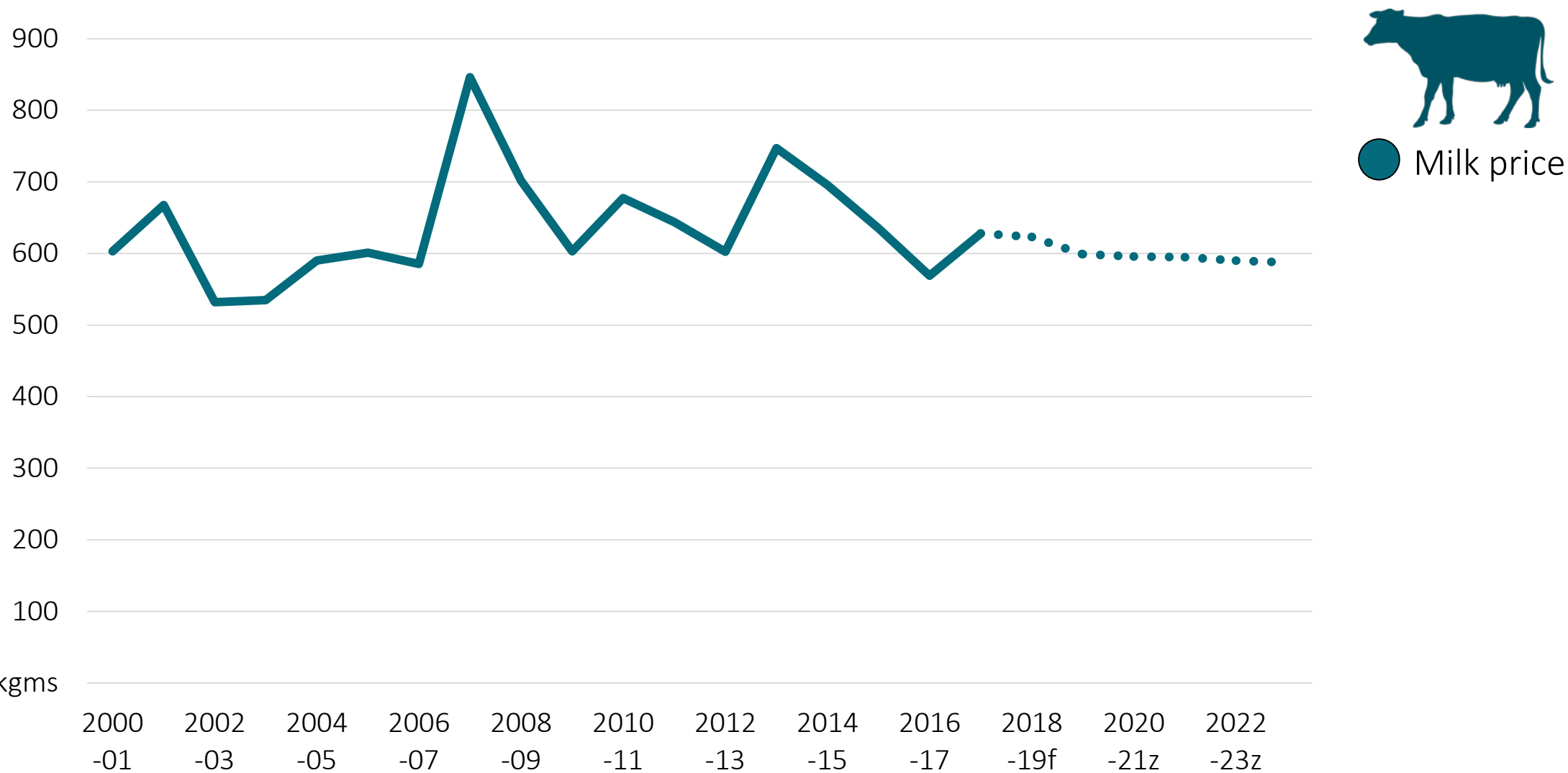
VS

77%

Nationally

y Provisional estimate. Proportion produced by businesses covering all cash costs.

Australian milk price steady to lower

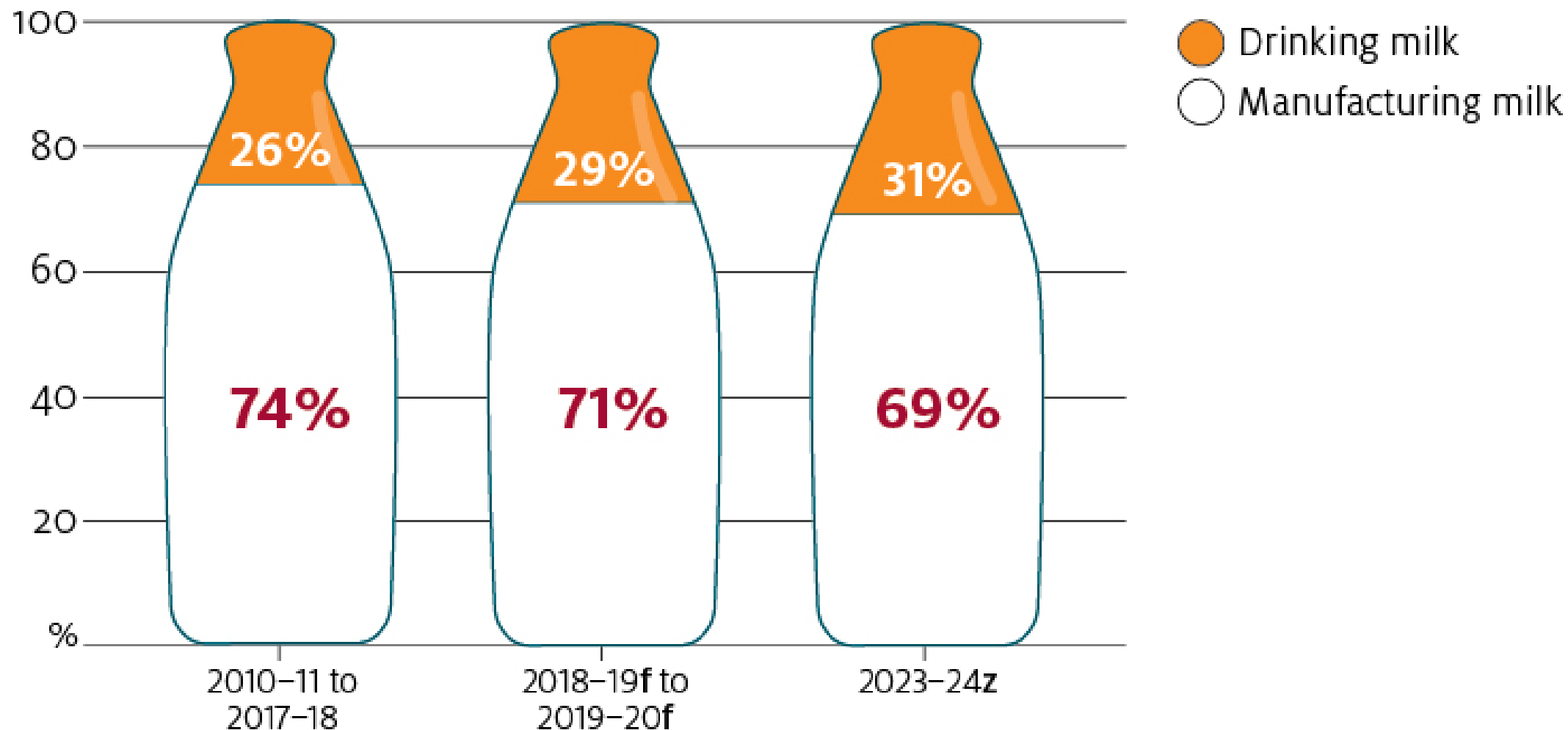


2018-19 c/kgms

f Forecast. z Projection.

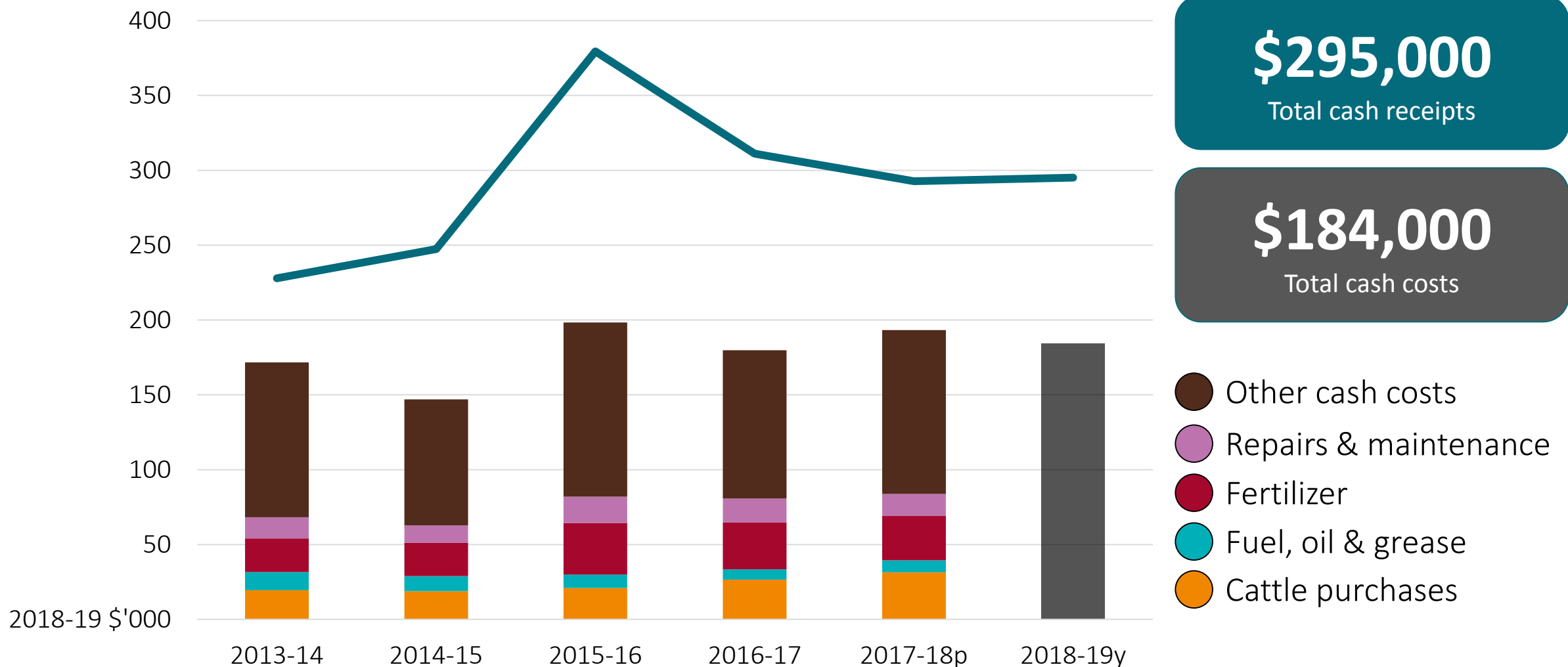
Fewer cows means less manufacturing milk

Australian milk utilisation



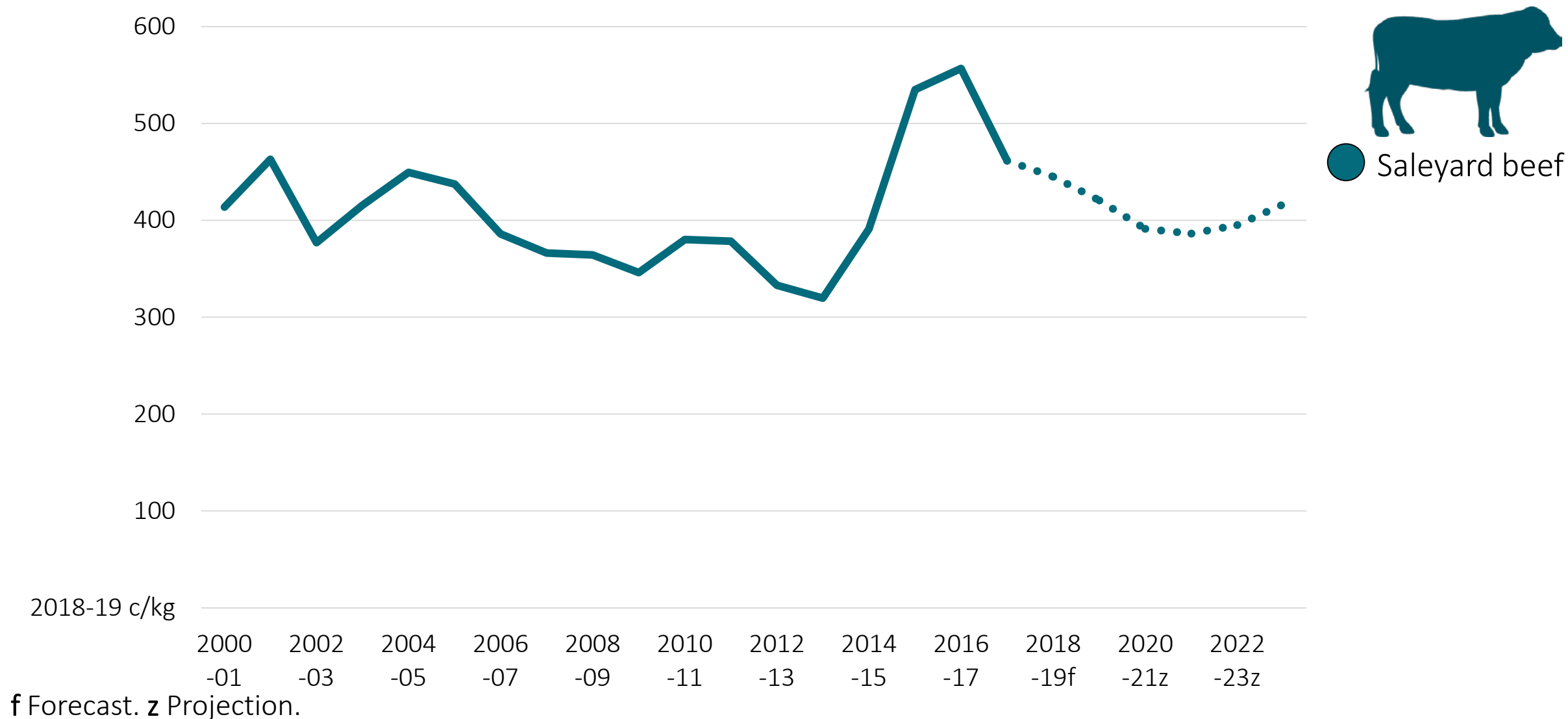
f Forecast. z Projection.

Beef farm financial performance drivers

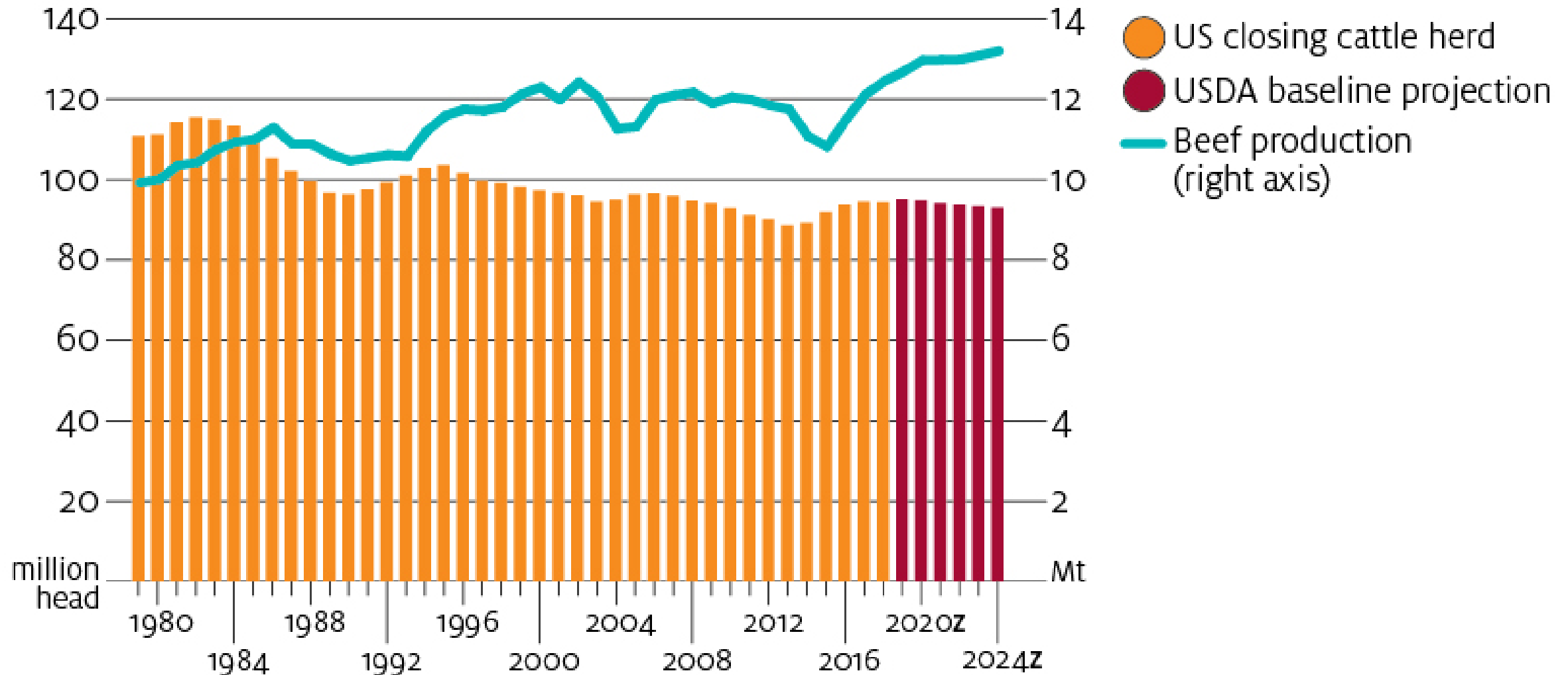


p Preliminary estimates. y Provisional estimates.

Saleyard beef prices to fall due to high global supplies

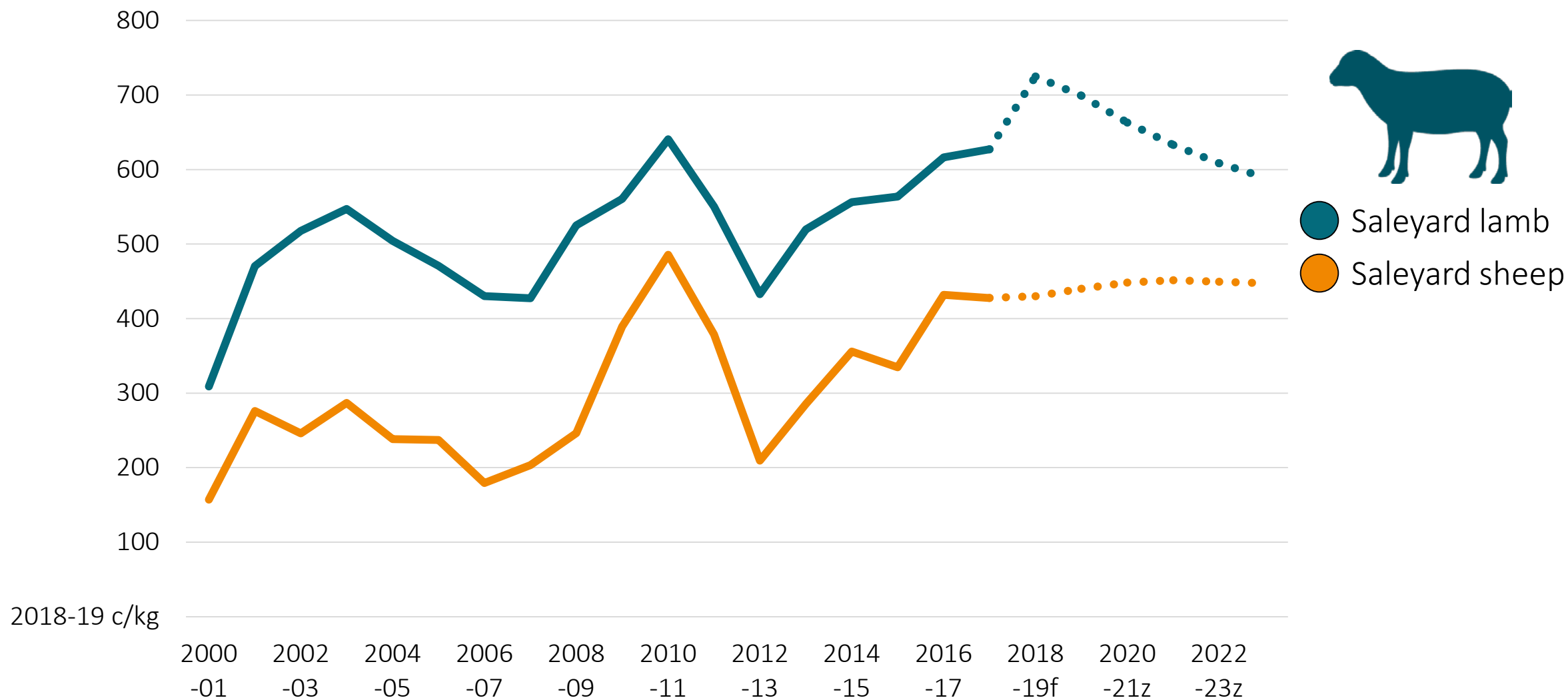


US cattle cycle projected to peak



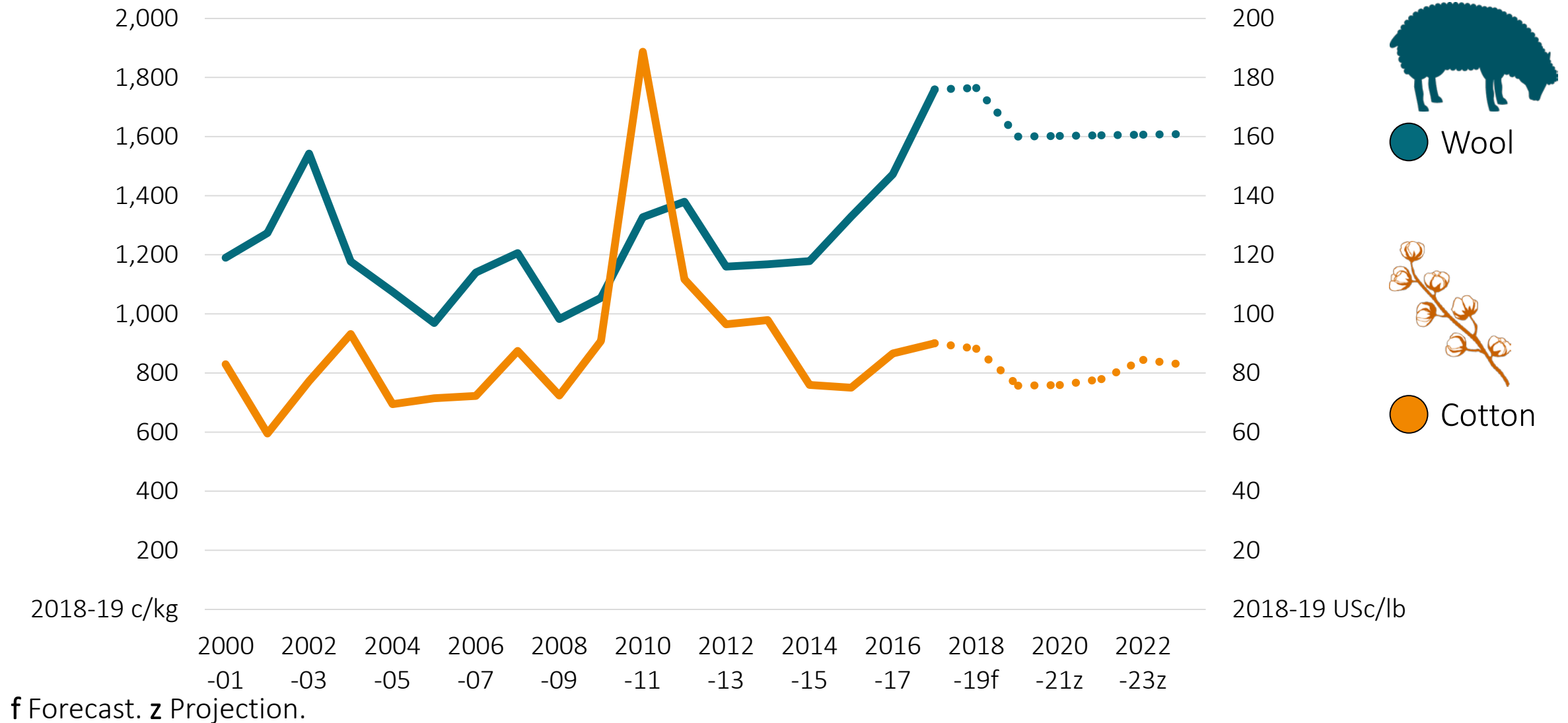
z Projection.

Lamb saleyard prices to fall in the medium term

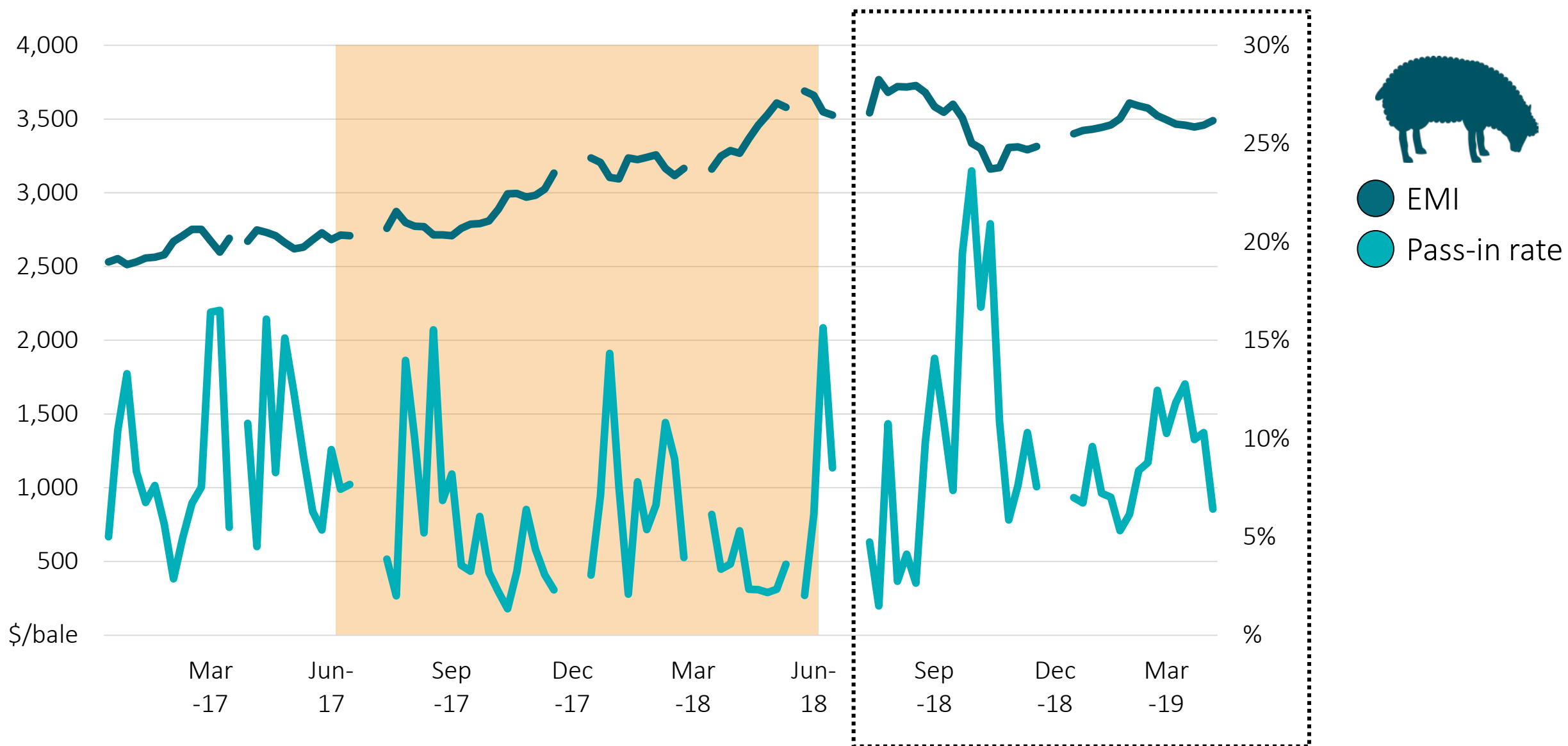


f Forecast. z Projection.

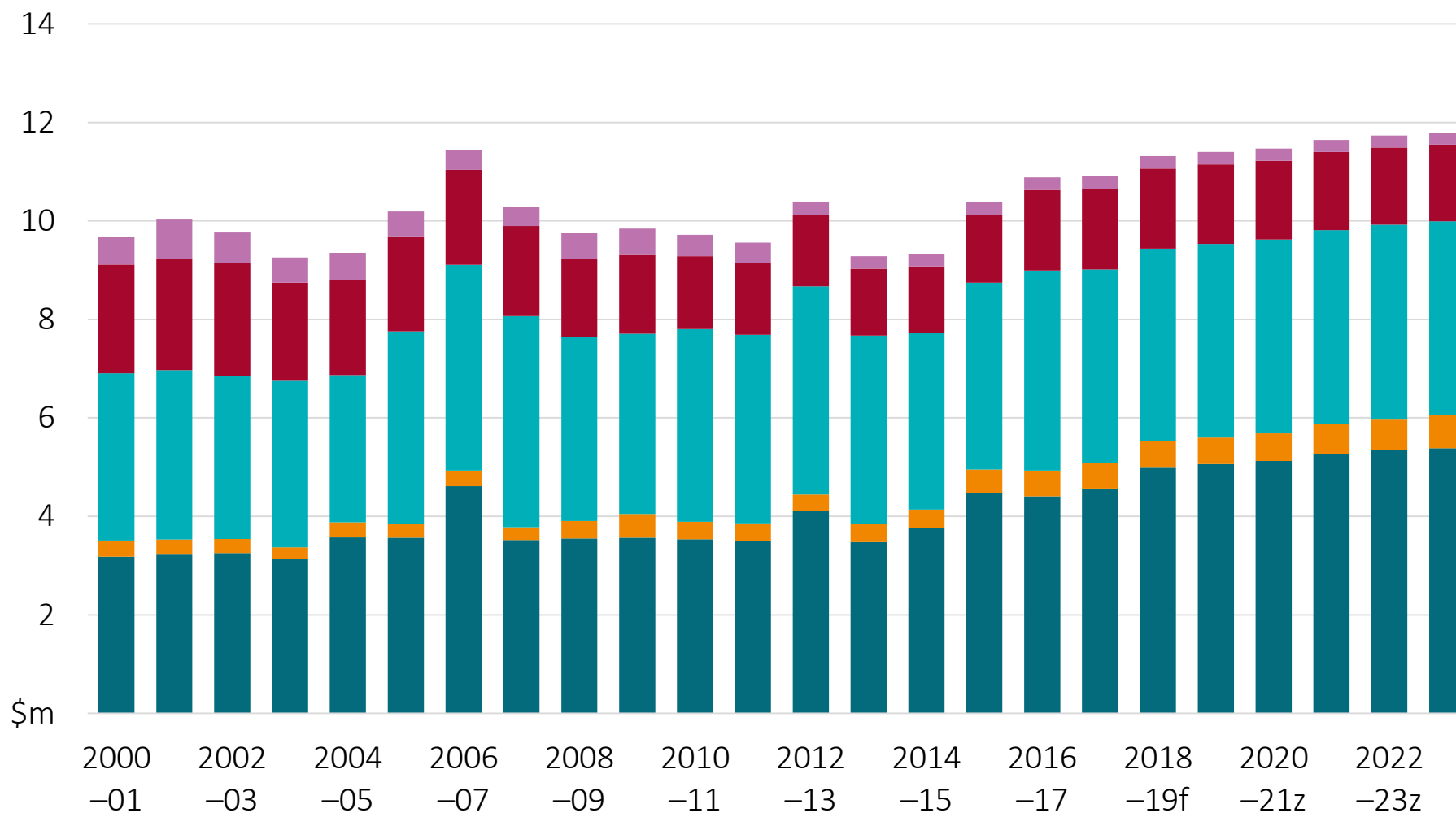
Global textile demand to remain strong



Wool price holding up with pass-in elevated...



Value of horticulture production to increase



- Other horticulture
- Nurseries, turf & cut flowers
- Vegetables
- Table & dried grapes
- Fruit & tree nuts

f Forecast. z Projection.

Salmon outlook driven by production growth



Global production recovering after disease outbreaks, pressuring prices lower

Tasmanian industry expected to further expand – Bruny Island, Storm Bay & Okehampton

Export growth has been strong.
13% higher volumes forecast by 2023-24



Australian Government

Department of Agriculture
and Water Resources

ABARES

agriculture.gov.au/ag-commodities-report

