



Australian Government

**Department of Agriculture
and Water Resources**

ABARES



The Meat Scene

Value creation a priority with demand to weaken

Jack Mullumby

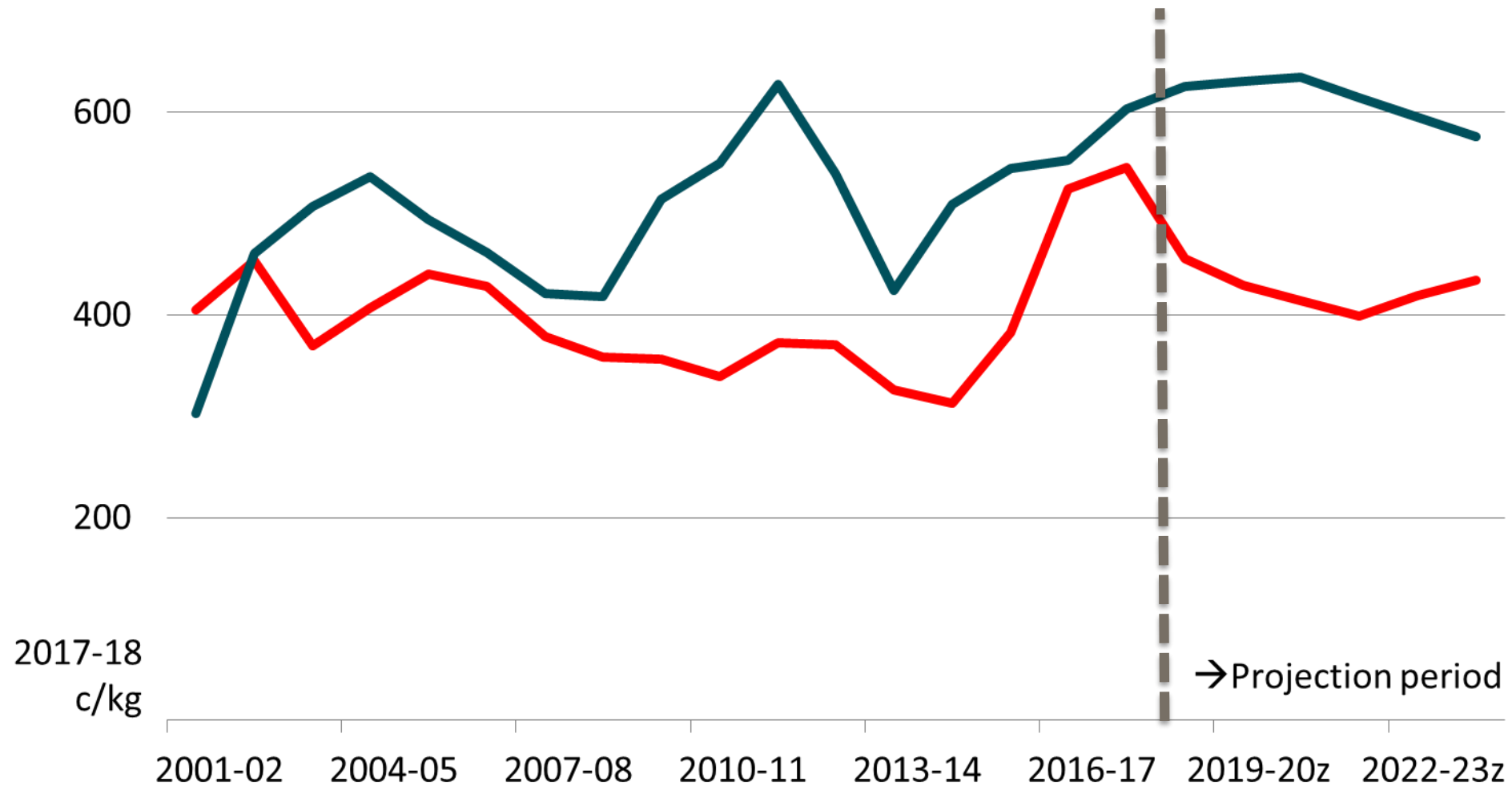
**Australian Bureau of Agricultural
and Resource Economics and Sciences**

6 - 7 March 2018

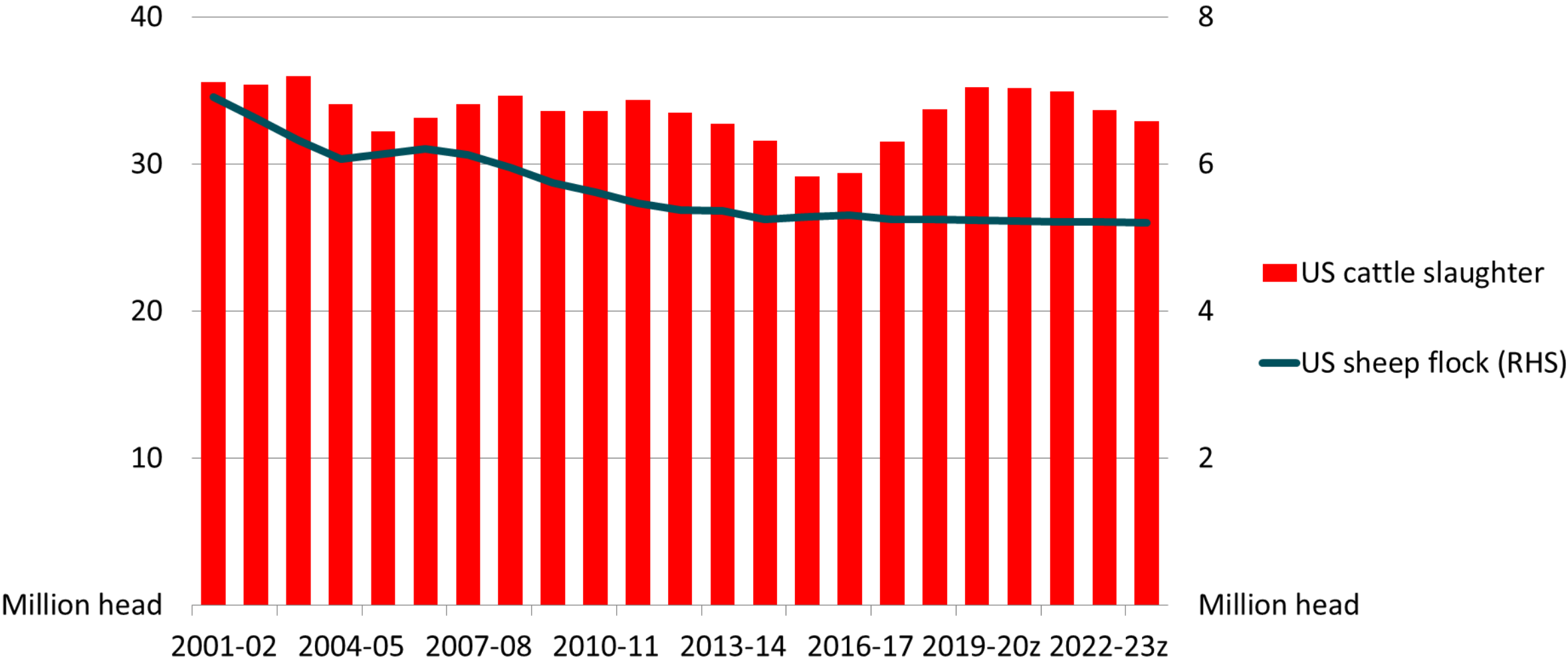


Research by the
Australian Bureau of Agricultural and Resource Economics and Sciences

Australian livestock prices to decline

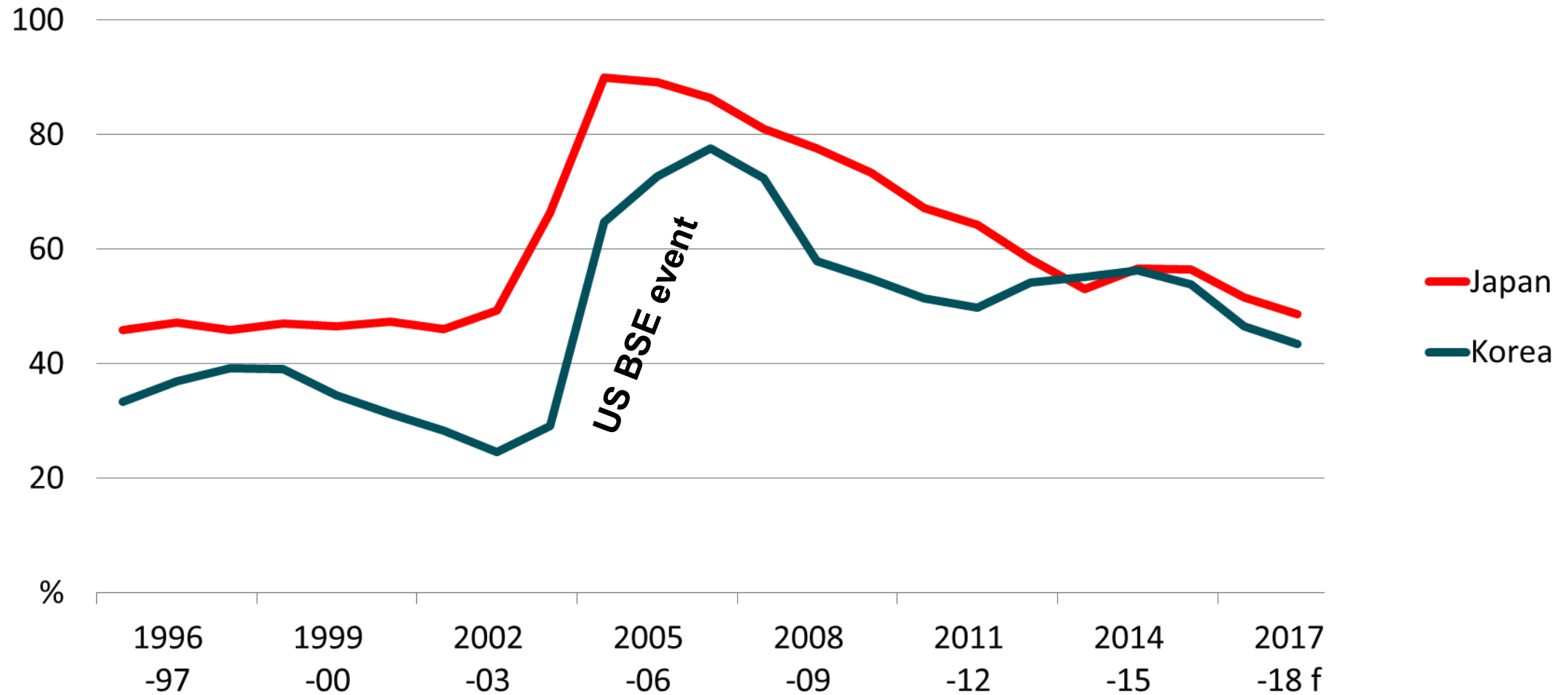


Weak import demand in the United States

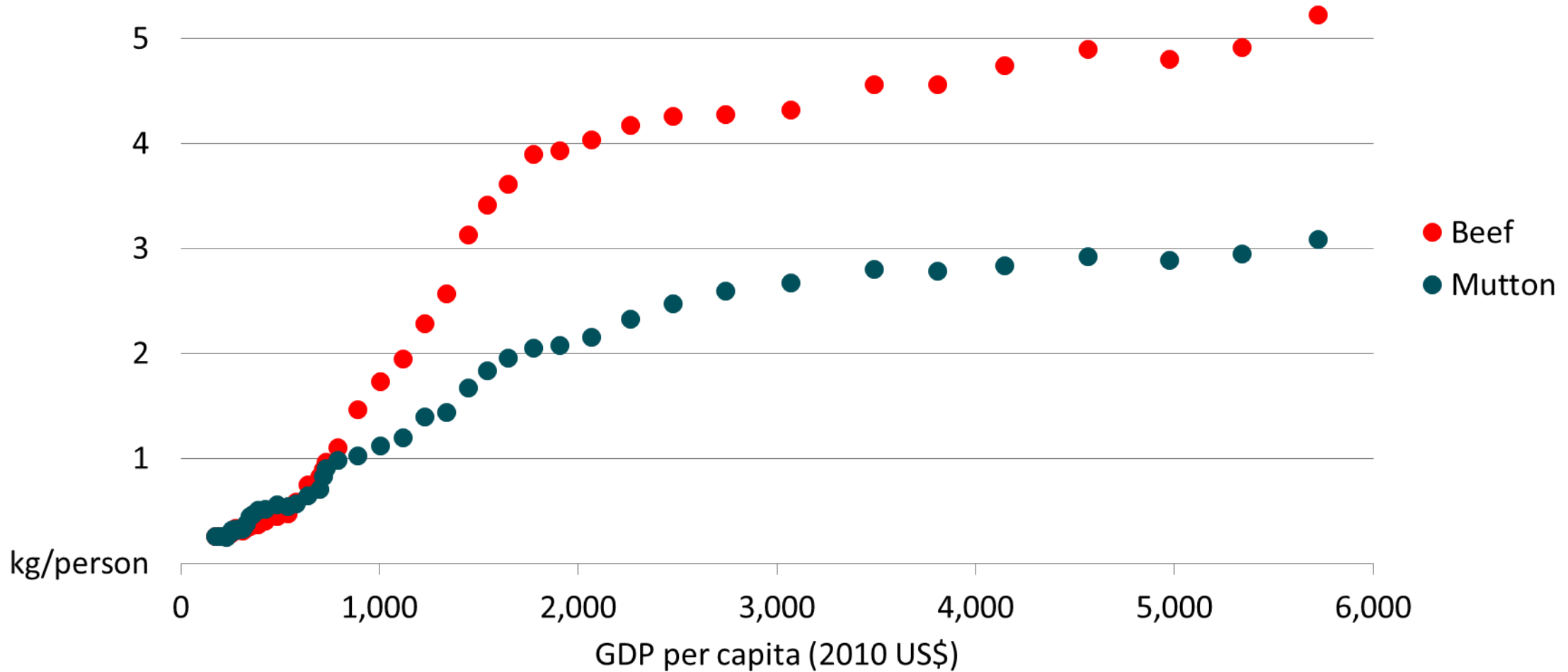


z ABARES projection

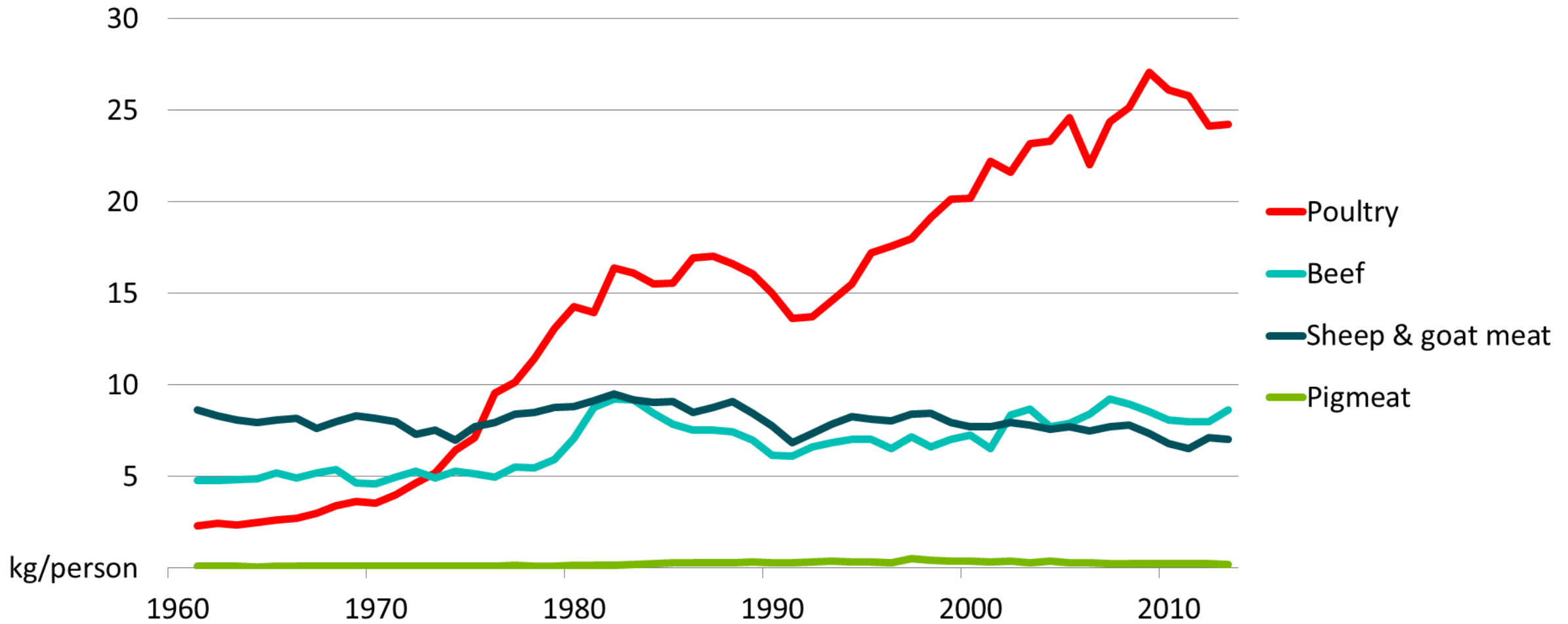
Market share in East Asia to continue to shrink



Income growth driving Chinese meat consumption



Demand for sheep meat weak in the Middle East

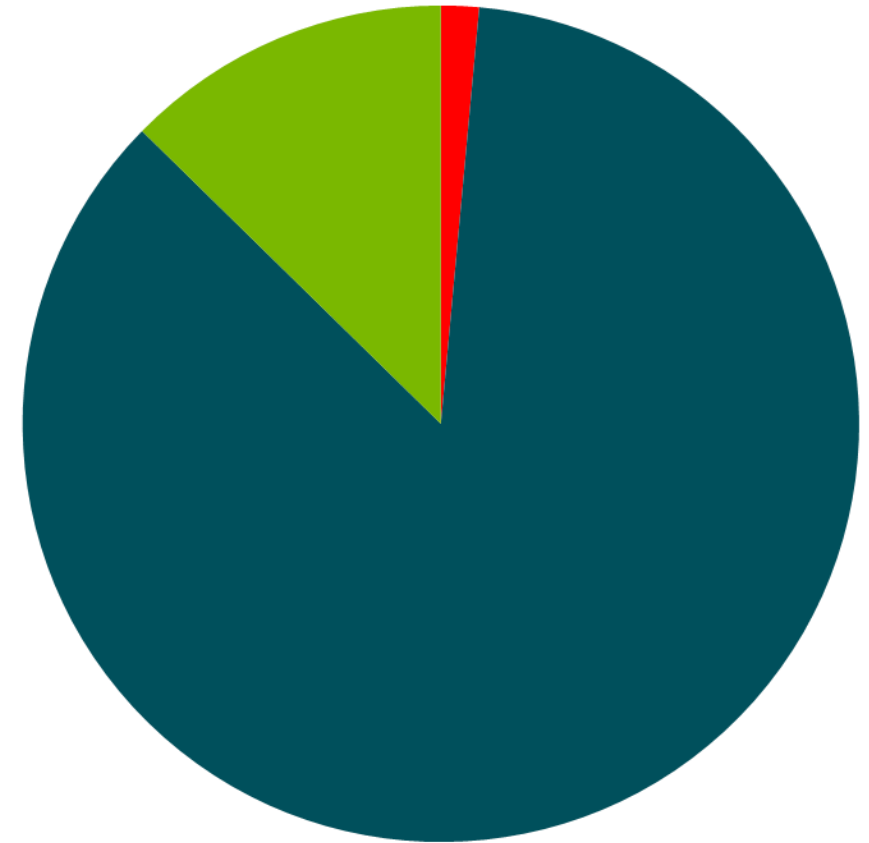


Live exports remain dependent on few markets

Live sheep



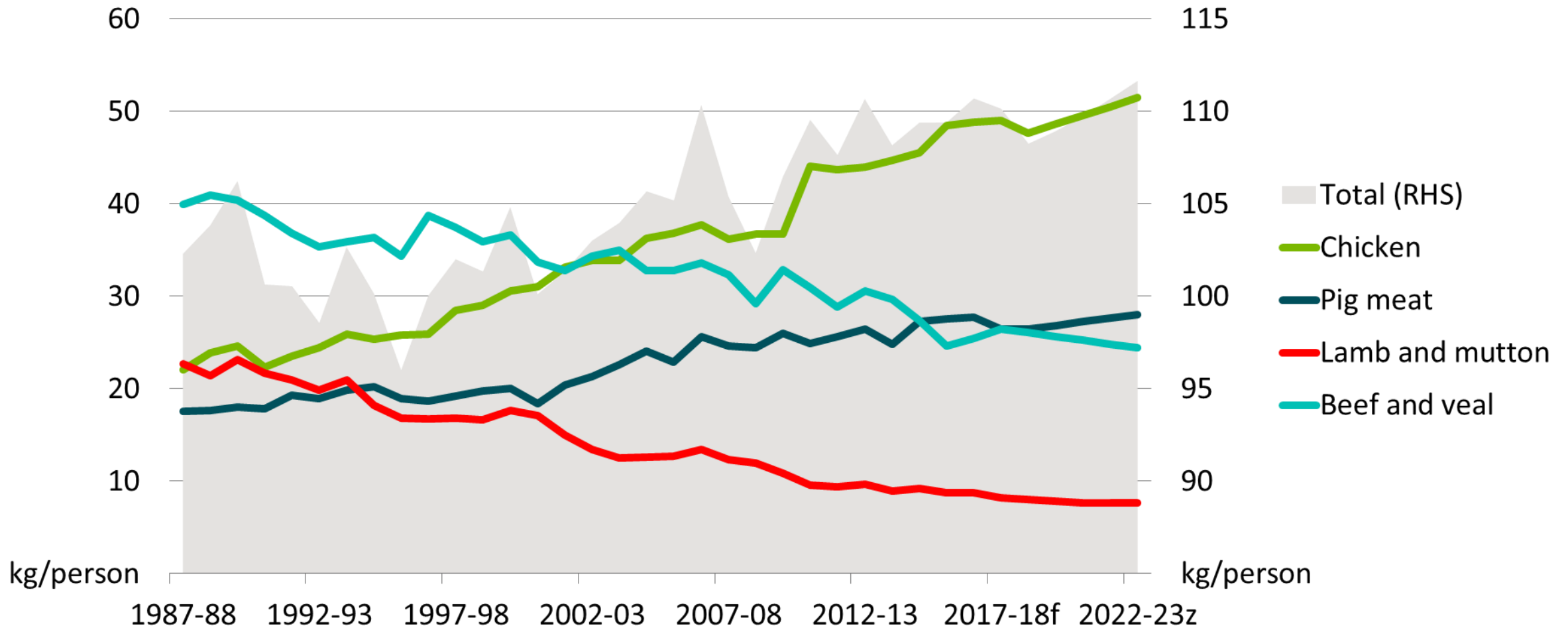
Live cattle



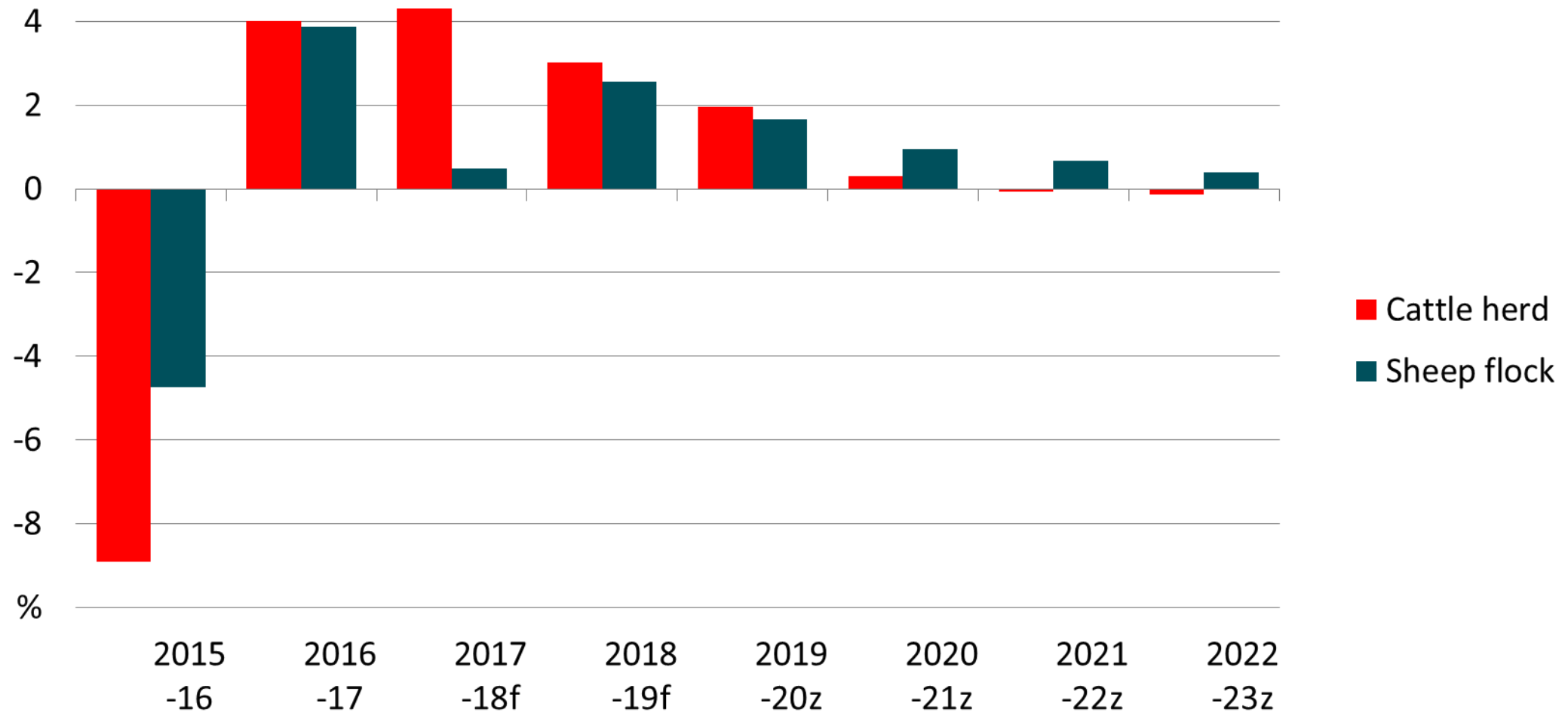
- Middle East
- SE-Asia
- Rest of World

Note: Average export volume 2014-15 to 2016-17

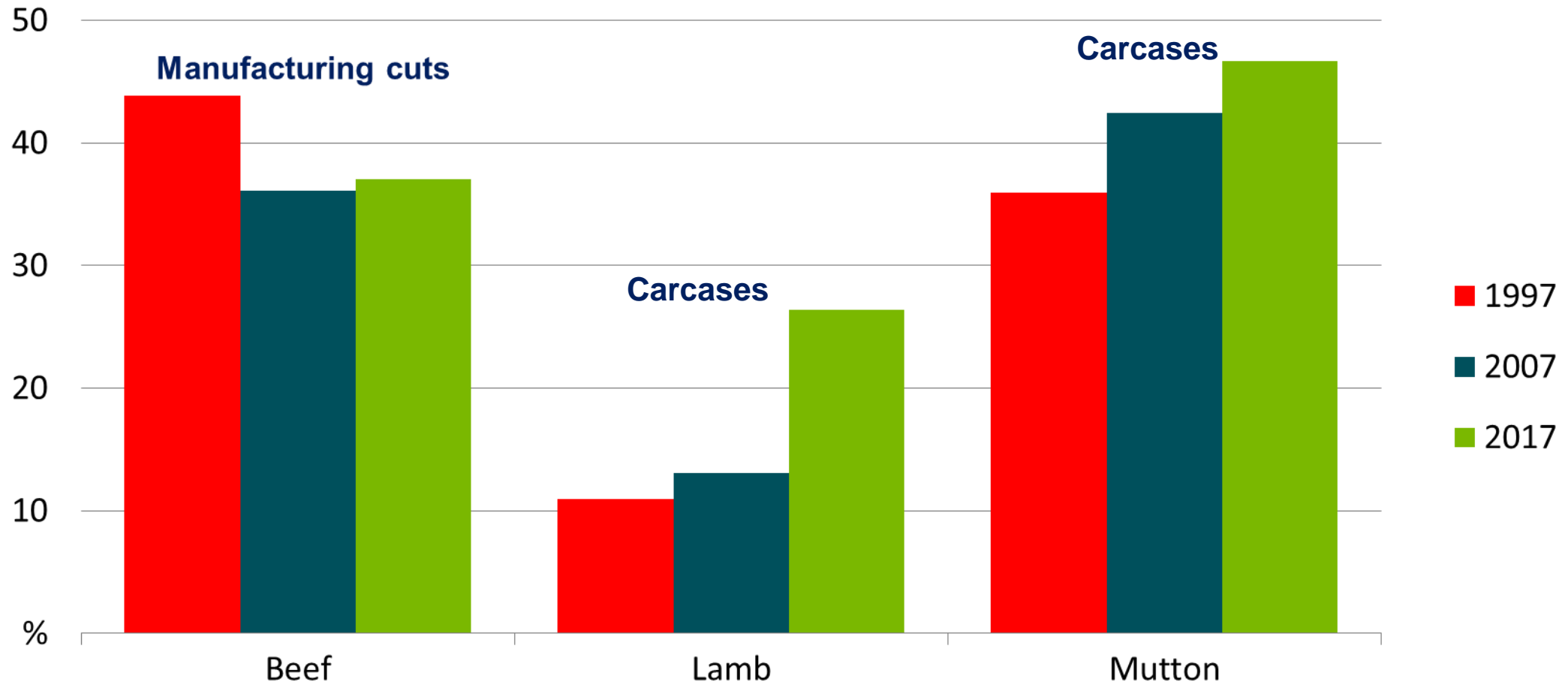
Australian consumption to be dominated by chicken



Australian livestock inventories to rise



Share of exports by primary cut





Australian Government
**Department of Agriculture
and Water Resources**
ABARES



agriculture.gov.au/abares

