



Australian Government
Department of Agriculture,
Water and the Environment

Requirements and conditions for approved arrangement class 19.2: automatic entry processing for commodities

Version 8.1



© Commonwealth of Australia 2020

Ownership of intellectual property rights

Unless otherwise noted, copyright (and any other intellectual property rights) in this publication is owned by the Commonwealth of Australia (referred to as the Commonwealth).

Creative Commons licence

All material in this publication is licensed under a [Creative Commons Attribution 4.0 International Licence](#) except content supplied by third parties, logos and the Commonwealth Coat of Arms.

Inquiries about the licence and any use of this document should be emailed to copyright@awe.gov.au.



Cataloguing data

Department of Agriculture, Water and the Environment 2020, *Requirement and conditions for approved arrangement class 19.2: automatic entry processing for commodities*, Canberra, April. CC BY 4.0.

This publication is available at agriculture.gov.au/import/arrival/arrangements/requirements#class-19

Department of Agriculture, Water and the Environment

GPO Box 858 Canberra ACT 2601

Switchboard +61 2 6272 2010

Web awe.gov.au

Disclaimer

The Australian Government acting through the Department of Agriculture, Water and the Environment has exercised due care and skill in preparing and compiling the information and data in this publication. Notwithstanding, the Department of Agriculture, Water and the Environment, its employees and advisers disclaim all liability, including liability for negligence and for any loss, damage, injury, expense or cost incurred by any person as a result of accessing, using or relying on any of the information or data in this publication to the maximum extent permitted by law.

Version control

Date	Version	Amendments	Approved by
18/05/2016	1.0	First version of document created for transition of AEPCOMM to an approved arrangement under the <i>Biosecurity Act 2015</i> . Process changes include the removal of import permit requirements for commodities and update to some document requirements to reflect the BICON conditions.	Compliance Assessment and Management
12/12/2016	2.0	Removal of content and procedures due to the implementation of determining AEPCOMM codes through BICON	Compliance Assessment and Management
03/01/2017	3.0	Removal of commodities green coffee, fresh asparagus and fresh tomatoes from the arrangement due to policy changes	Compliance Assessment and Management
06/05/2017	4.0	Addition of commodities to the scope of the arrangement as part of Phase 1 of the AEP Reform Project. Commodity groups affected include 1, 4, 5, 6 and 10	Compliance Assessment and Management
14/03/2018	5.0	Combining timber tariffs under one commodity group, combining used passenger vehicles and part and used machinery and parts under one commodity group, updates to minor issues identified as part of AEP reform phase 1 commodity expansion and removal of non-conformity relating to the NCCC AA.	Compliance Assessment and Management
27/04/2018	6.0	Requirements updated to reflect changes implemented as part of phase 2 AEP reform (23 June 2018). Changes include refined requirements, new AEPCOMM codes, changes to commodity groupings and lodgement information.	Assessment Policy and Projects

Date	Version	Amendments	Approved by
21/05/2018	6.1	Minor update to table 8 and 10 regarding tariff groups 4409 and 4418 and update to unfinished timber group to include INS and FUM pathways. This will be implemented as part of phase 2 of the AEP reform (23 June 2018)	Assessment Policy and Projects
26/09/2018	7.0	Policy updated and declaration added. Requirements updated to include BMSB onshore measures. Additional BMSB group created and BMSB outcomes added to machinery, unfinished timber and manufactured wooden articles.	Assessment Policy and Projects
22/11/2018	7.1	Removal of Break Bulk from the commodity groups Timber and timber products and Highly processed and manufactured Wooden Articles	Assessment Policy and Projects
26/08/2019	8.0	Updating policy into Requirements and Conditions in accordance with legislative requirements. Adding new commodity groups Starter cultures, manufactured articles containing animal derived material, prefabricated buildings, honey, unaccompanied personal effects and boats to the arrangement. Removing Garlic from the arrangement. AEPCOMM outcomes removed. BICON update for Milling products for human consumption with outcome of Grain and Seeds removing option for REL (Release)	Legislative Reform and Assessment Policy
15/05/2020	8.1	Update to department name. New tariffs added to the Manufactured articles containing animal derived material commodity group and the inclusion of Cartilaginous fish to the Seafood commodity group.	Legislative Reform and Assessment Policy

Contents

Version control.....	iii
About this document	vii
Declaration.....	vii
Definitions.....	vii
Supporting documents.....	vii
Monitoring of compliance.....	vii
Operating a class 19.2 approved arrangement	1
Purpose.....	1
Scope	1
Class 19.2 prerequisite requirements	1
Conditions for operating a Class 19.2 approved arrangement	2
Appendix 1: AEPCOMM work activities flowchart.....	6
Appendix 2: In-scope commodities and related information.....	7
1. Seafood for human consumption	8
2. Dairy products for human consumption from New Zealand.....	12
3. New tyres	13
4. New and used vehicles, aircraft and parts, machinery and parts and equipment.....	14
5. Highly processed and manufactured wooden articles	15
6. Cane and rattan articles and bamboo products	18
7. Unfinished timber and timber products.....	18
8. Milled rice for human consumption.....	19
9. Fresh onions and shallots from New Zealand, United States and Netherlands	20
10. Semi-processed onions and shallots from China for human consumption	21
11. Milling products for human consumption.....	21
12. Highly refined organic chemicals and substances	22
13. Brown marmorated stink bug (BMSB) target high risk goods	22
14. Starter cultures.....	24
15. Manufactured articles containing animal derived material.....	24
16. Prefabricated buildings.....	25
17. Honey.....	26
18. Unaccompanied personal effects.....	26
19. Boats.....	27
Appendix 3:Declaration	29

Tables

Table 1 AEPCOMM approved arrangement commodities and pathways.....	7
Table 2 In-scope tariff reference numbers for finfish, AEPCOMM approved arrangement.....	9
Table 3 In-scope tariff reference numbers for frozen molluscs, AEPCOMM approved arrangement.....	12
Table 4 In-scope tariff reference numbers for fish roe and caviar, AEPCOMM approved arrangement.....	12
Table 5 In-scope tariff reference numbers for NZ dairy products, AEPCOMM approved arrangement.....	13
Table 6 In-scope tariff reference numbers for new tyres, AEPCOMM approved arrangement.....	14
Table 7 In-scope tariff reference numbers for new and used vehicles, aircraft and parts, machinery and equipment AEPCOMM approved arrangement.....	14
Table 8 In-scope tariff reference numbers for highly processed wooden articles and manufactured wooden articles, AEPCOMM approved arrangement.....	16
Table 9 In-scope tariff reference numbers for cane and rattan articles and bamboo products, AEPCOMM approved arrangement.....	18
Table 10 In-scope tariff reference numbers for unfinished timber, AEPCOMM approved arrangement.....	19
Table 11 In-scope tariff reference numbers for milled rice, AEPCOMM approved arrangement.....	20
Table 12 In-scope tariff reference numbers for fresh onions and shallots from New Zealand, United States, Netherlands and China, AEPCOMM approved arrangement.....	20
Table 13 In-scope tariff reference numbers for semi-processed onions and shallots from China, AEPCOMM approved arrangement.....	21
Table 14 In-scope tariff reference numbers for processed grain and seed products and processed tuber and corm product, AEPCOMM approved arrangement.....	22
Table 15 In-scope tariff reference numbers for highly refined organic chemicals and substances, AEPCOMM approved arrangement.....	22
Table 16 In-scope tariff reference numbers for commodities listed as target high risk goods for BMSB, AEPCOMM approved arrangement.....	23
Table 17 In-scope tariff reference numbers for starter cultures (and derivatives), AEPCOMM approved arrangement.....	24
Table 18 In-scope tariff reference numbers for manufactured articles containing animal derived material, AEPCOMM approved arrangement.....	25
Table 19 In-scope tariff reference numbers for prefabricated buildings, AEPCOMM approved arrangement.....	26
Table 20 In-scope tariff reference numbers for honey, AEPCOMM approved arrangement.....	26
Table 21 In-scope tariff reference numbers for personal effects, AEPCOMM approved arrangement.....	27
Table 22 In-scope tariff reference numbers for boats, AEPCOMM approved arrangement.....	27

About this document

This document sets out the requirements and conditions that must be met before the relevant Director will consider approval for the provision of biosecurity activities under section 406 of the *Biosecurity Act 2015*, otherwise known as an approved arrangement.

When operating under this arrangement the biosecurity industry participant is responsible for complying with each condition as set out in this document.

This document specifies the requirements for approval and conditions to be met for the operation of a Class 19.2 approved arrangement. Compliance with the conditions will be evaluated and effectively monitored by document assessment and audit activities.

Unless specified otherwise, any references to ‘the department’ or ‘departmental’ means the Department of Agriculture, Water and the Environment.

Information on approved arrangements, regional contact details and copies of relevant approved arrangement documents are available on the [approved arrangements](#) page on the department’s website.

Declaration

The approved arrangement manager is required to complete the [Appendix 3: Declaration](#) and return it to the department via email to broker.accreditation@awe.gov.au.

Definitions

Terms used in this document are defined in the [approved arrangements glossary](#) and the *Biosecurity Act 2015*. This document refers to AQIS where AQIS remains current in IT systems.

Supporting documents

Ensure you understand and comply with the requirements and conditions for establishing and operating an approved arrangement. Read this document in conjunction with the most current online versions of:

- [Approved arrangements general policies](#)
- [Minimum documentary and import declaration requirements policy](#)
- [Requirements and conditions for approved arrangement class 19.1: non-commodity for containerised cargo clearance](#)
- [Compliance classifications for broker class approved arrangements](#)

Monitoring of compliance

Compliance with the conditions of operating a class 19.2 approved arrangement is monitored in accordance with the [Approved arrangements general policies](#) document. If the department detects non-compliance, we will record it against the conditions and the biosecurity industry participant will be notified.

A full list of compliance classifications may be found on the [Compliance classifications for broker class approved arrangements](#).

Operating a class 19.2 approved arrangement

Purpose

The class 19.2 approved arrangement is for the assessment of commodity documentation and management of biosecurity concerns associated with the goods. These commodity groups are subject to biosecurity control and managed in accordance with the department's [Biosecurity Import Conditions System](#) (BICON).

Scope

Biosecurity activities performed under a class 19.2 approved arrangement are limited to assessing commodity documentation and managing goods in accordance with [Appendix 2: In-scope commodities and related information](#), BICON and the [Minimum documentary and import declaration requirements policy](#). Some consignments may be subject to inspection and testing under the imported food inspection scheme.

Activities under this arrangement include:

- assessing documentation for commodities in scope of the arrangement and may only be used to address commodity biosecurity concerns
- applying an automatic entry processing for commodities (AEPCOMM) code to generate a biosecurity direction in the Agriculture Import Management System (AIMS) which will be used for the assessment and management of commodity biosecurity risk associated with the goods
- receiving biosecurity directions generated by AIMS and ensuring that the directions are complied with.

Class 19.2 prerequisite requirements

Requirement 1: The biosecurity industry participant must hold an approved class 19.1 approved arrangement and have at least one employed or contracted person who is accredited to undertake tasks under the class 19.1 approved arrangement.

Requirement 2: The biosecurity industry participant must have a minimum of one employed or contracted person who is accredited to undertake activities under the class 19.2 approved arrangement.

Requirement 3: When applying for an approved arrangement, the biosecurity industry participant must notify the [department](#) of the accredited persons that will perform the approved activities on behalf of the biosecurity industry participant. They must include their customs broker licence number, as part of the application.

Training and accreditation obligations under the approved arrangement are available at [Training and accreditation for approved arrangements, broker accreditation](#).

Requirement 4: A biosecurity industry participant must have a BICON multiple user account that is registered for AEPCOMM user access to BICON.

See [BICON help](#) for information on how to create an account and register for AEPCOMM access.

Requirement 5: Accredited persons employed by/contracted to the biosecurity industry participant must be added to the biosecurity industry participant's BICON multiple user account.

See [BICON help](#) for information on how to upgrade and join an existing multiple user account.

Conditions for operating a Class 19.2 approved arrangement

The biosecurity industry participant must:

- ensure that the biosecurity activities/directions are carried out in accordance with the arrangement
- comply with any and all requirements specified in the arrangement
- comply with any and all conditions to which the arrangement is subject
- ensure accredited persons employed/contracted to the approved arrangement comply with any conditions to which the arrangement is subject.

General Conditions

Condition 1: All accredited persons employed or contracted by the biosecurity industry participant must maintain their accreditation as stipulated by the [training and accreditation for broker approved arrangements \(class 19.1 and class 19.2\)](#) policy, including completing [Continued Biosecurity Competency](#) (CBC) training each CBC period (1 April to 31 March).

Condition 2: It is the responsibility of the biosecurity industry participant to ensure all employed or contracted persons lodging full import declarations are fully accredited at time of lodgement.

Condition 3: The biosecurity industry participant must notify the department in writing within 15 working days regarding any of the following matters:

- details of accredited persons who join or depart the approved arrangement
- when the approved arrangement ceases to employ or contract at least one accredited person
- when the details of the approved arrangement manager of the biosecurity industry participant changes.

Condition 4: The biosecurity industry participant must notify the department in writing within 15 working days of becoming aware of any change of status, of the biosecurity industry participant or their associates (including accredited persons) relevant to the operation of the approved arrangement, not previously been notified to the department in relation to:

- conviction of an offence or order to pay a pecuniary penalty under the *Biosecurity Act 2015*, *Customs Act 1901*, Criminal Code or *Crimes Act 1914*
- debt to the Commonwealth that is more than 28 days overdue under the *Biosecurity Act 2015*, *Customs Act 1901*, Criminal Code or *Crimes Act 1914*

- refusal, involuntary suspension, involuntary revocation/cancellation or involuntary variation of an import permit, approved arrangement site, or approved arrangement under the *Biosecurity Act 2015*.

Condition 5: The department must be notified of any [reportable biosecurity incident](#) as soon as practicable, in accordance with the determination made by the Director of Biosecurity.

Condition 6: The biosecurity industry participant must provide site access to biosecurity officers, biosecurity enforcement officers and department-approved auditors to perform the functions and exercise the powers granted to them by the Biosecurity Act or another law of the Commonwealth.

Condition 7: The biosecurity industry participant must provide departmental biosecurity officers, auditors or department-approved auditors with facilities and assistance as requested, and any required documents (including electronic documents), records or items relevant to the audit.

Condition 8: The biosecurity industry participant must allow departmental biosecurity officers, auditors or department-approved auditors to examine documents (including electronic documents) and collect evidence of compliance and non-compliance with approved arrangement conditions by performing actions such as copying documents and taking photographs.

Operating conditions

Condition 9: Accredited persons must determine if the commodity is in scope of the arrangement.

This may be achieved by referring to [Appendix 2: In-scope commodities](#) and related information and the approved AEPCOMM pathways in BICON.

Condition 10: Only accredited persons are to assess all documentation for commodities in scope of this approved arrangement. The document assessment must confirm documentation complies with:

- [Minimum documentary and import declaration requirements policy](#)
- [BICON import conditions](#).

Condition 11: Accredited persons must provide information in the import declaration that accurately reflects the consignment noting that all necessary information fields that are specific to biosecurity are completed as required by the [Minimum documentary and import declaration requirements policy](#).

Condition 12: Accredited persons must be in possession of all the documents required per relevant BICON import conditions assessed to generate an automated direction under the arrangement prior to the full import declaration being lodged into the ICS.

Condition 13: Accredited persons must ensure all documentation assessed to generate an automated direction under the arrangement meets the [Minimum documentary and import declaration requirements policy](#) prior to the full import declaration being lodged into the ICS.

Condition 14: Accredited persons must present all documentation assessed to generate an automated direction for a consignment to the department at the initial request for documentation (this includes providing documentation in the Cargo Online Lodgement System (COLS)).

Condition 15: Accredited persons must enter an appropriate approved arrangement site number into the AQIS premises ID field in the ICS to ensure that a location is assigned to the biosecurity direction.

The approved arrangement site must be an appropriate class to perform the directed biosecurity activity as listed in individual BICON commodity outcomes.

For a list of approved arrangement sites and their premises ID, see [sites operating under an approved arrangement](#) on the department's website.

Condition 16: Accredited persons must enter the treatment provider's AQIS/agriculture entity identifier (AEI) in the AEI field in the ICS, where a consignment has been treated offshore by an offshore registered treatment provider and the certified treatment details meet BICON conditions for the relevant biosecurity concern (e.g. treatment rates for BMSB are different to treatment rates for commodity concerns).

Condition 17: Where BICON stipulates a government issued certificate is required, and the country is listed on the [electronic certificate \(eCert\) for imports](#) webpage, the biosecurity industry participant must enter the government certificate type (in the AQIS Document Type field) and certificate number (in the AQIS Document Number field) in ICS.

For information on eCert availability please see [Electronic certification \(eCert\) for imports](#).

Condition 18: Where BICON stipulates a government issued certificate is required from a country **not** listed for [electronic certificate \(eCert\) for imports](#) exchange, accredited persons must provide the government issued certificate number against the goods description field in the ICS.

Condition 19: Where applicable accredited persons must record unique identifiers against the vehicle identification number (VIN) field for each line.

Condition 20: The biosecurity industry participant must ensure that biosecurity directions generated by AIMS are carried out or arranged to be carried out within the designated AIMS direction timeframe.

The biosecurity industry participant is responsible for the goods (as the primary receiver of AIMS directions) and must do the following required by the direction:

- arrange inspection activities
- provide non-broker approved arrangements with biosecurity directions to be carried out within the designated AIMS direction timeframe (e.g. inspection/treatment location)
- provide third parties other than approved arrangement sites with biosecurity directions to be carried out within the designated AIMS direction timeframe (e.g. transport/logistics providers who move containers)

- present any documentation as specified on AIMS directions when directed.

Condition 21: Where a consignment has bypassed biosecurity intervention, the biosecurity industry participant must be able to provide evidence that all relevant directions were passed onto third parties within the designated AIMS direction timeframe.

Condition 22: The biosecurity industry participant and/or accredited persons must not manipulate biosecurity goods management to gain a favourable and preferred outcome.

Condition 23: If an accredited person requests amendments to documentation, they must document the time, date, type of request and amendment made and the time, date and response from the issuer of the document. The accredited person must retain the correspondence as part of the documentation clearance of the consignment.

Administration and management

Condition 24: For every import declaration lodged by the biosecurity industry participant, the following records and documents must be kept and maintained for a period of 5 years from the date the document assessment was conducted:

- import declaration number
- description of goods
- BICON permit (where applicable)
- commodity documentation specified per the relevant BICON cases
- evidence of the AEPCOMM codes and premises location IDs (where used)
- record of the accredited person who performed the assessment and lodgement
- any other relevant documentation and records e.g. providing biosecurity directions to third parties
- any other records or documents that have been used in the decision-making process
- evidence of amendments to documentation used in the clearance of the consignment in accordance with **Condition 23**.

Condition 25: The biosecurity industry participant must maintain records of their accredited persons. The records must be up to date and include CBC completion records.

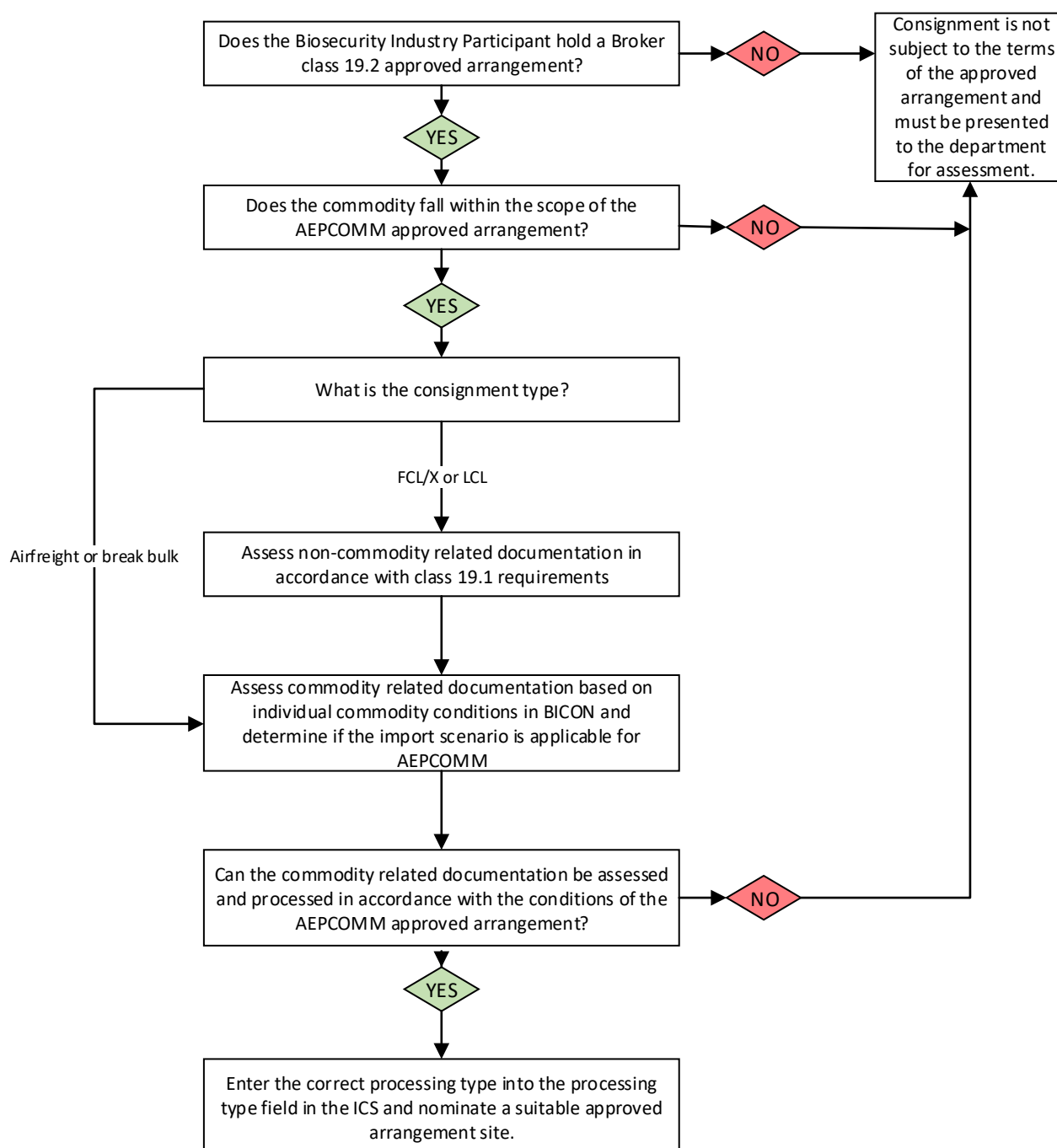
Condition 26: Records and/or documents must be made available within 1 business day or as specified by the department where requested.

Any request for further documentation for assessment after the initial request is considered a new document assessment.

Appendix 1: AEPCOMM work activities flowchart

An accredited person must perform certain activities when determining if a commodity may be processed under the AEPCOMM approved arrangement (Figure 1).

Figure 1 AEPCOMM work activities



AEPCOMM Automatic entry processing for commodities. **BICON** Biosecurity import conditions system. **FCL/X** Full container load (**FCL** Full container single supplier – single importer **FCX** Full container multiple suppliers-single importer). **ICS** Integrated cargo system. **LCL** Less than container load. **NCCC** Non-commodity for containerised cargo clearance.

Appendix 2: In-scope commodities and related information

The import declaration must meet these conditions:

- all lines are of the same cargo type; for example, an FCL consignment cannot be processed together with an airfreight consignment on the same entry
- impediment-free lines are out of scope of the approved arrangement and should not have an AEPCOMM code assigned to them
- all lines in a sea cargo import declaration are associated with a container (where applicable)
- all lines for the same commodity group must have the same outcome applied.

Table 1 provides a general guide of commodities that may be processed under AEPCOMM approved arrangement.

Table 1 AEPCOMM approved arrangement commodities and pathways

Commodity group	Sub-commodity group	Country	Mode of transport	Commodity and sub-commodity category reference
Seafood for human consumption	Finfish for human consumption	All countries	Airfreight, FCL/X, LCL	1.1
	Frozen molluscs for human consumption	All countries	Airfreight, FCL/X, LCL	1.2
	Fish roe and caviar for human consumption	All countries	Airfreight, FCL/X, LCL	1.3
Dairy products for human consumption from New Zealand	na	New Zealand	Airfreight, FCL/X	2
New tyres	na	All countries	Airfreight, FCL/X	3
New and used vehicles, aircraft and parts, machinery and parts and equipment	na	All countries	Airfreight, Break Bulk, FCL/X, LCL	4
Highly processed wooden and manufactured wooden articles	na	All countries	Airfreight, FCL/X, LCL	5
Cane, rattan articles and bamboo products	Cane and rattan articles and bamboo products	All countries	Airfreight, FCL/X, LCL	6
Timber and timber products	Unfinished timber products	All countries	Airfreight, FCL/X, LCL	7
Milled rice for human consumption	na	All countries	FCL/X	8

Commodity group	Sub-commodity group	Country	Mode of transport	Commodity and sub-commodity category reference
Fresh onions and shallots for human consumption	na	New Zealand, United States, Netherlands	FCL	9
Semi-processed onions and shallots	na	China	FCL	10
Milling products for human consumption	Processed grain and seed products and processed tuber and corm products for human consumption	All countries	FCL	11
Highly refined organic chemicals and substances	na	All countries	FCL	12
Brown marmorated stink bug (BMSB) Target high risk goods	na	All countries listed as target risk countries for BMSB	Break bulk, FCL/X	13
Starter cultures	Non-composite yeasts and approved starter cultures	All countries	Airfreight, FCL/X, LCL	14
Manufactured articles containing animal derived material	Natural fibres (and their derivatives) of animal origin retail ready and/or finished product	All countries	Airfreight, FCL/X, LCL	15
	Feathers fully contained within manufactured articles			
Prefabricated buildings	Prefabricated buildings and new and used caravans	All countries	Break bulk, FCL/X, LCL	16
Honey	na	All countries	Airfreight, FCL/X, LCL	17
Unaccompanied personal Effects	General personal effects and bequeathed goods	All countries	Airfreight, FCL/X, LCL	18
Boats	Imported sea going vessels	All countries	Break Bulk, FCL/X, LCL	19

AEPCOMM Automatic entry processing for commodities. **FCL/X** Full container load (**FCL** Full container single supplier – single importer **FCX** Full container multiple suppliers-single importer). **LCL** Less than container load.

1. Seafood for human consumption

1.1 Finfish for human consumption

Consignments that do not meet the in-scope criteria and are not supported by a valid AEPCOMM pathway in BICON are deemed out of scope.

In scope

The BICON case contains pathways approved under the arrangement:

- finfish for human consumption.

The AEPCOMM approved arrangement may be used for import declarations of finfish for human consumption:

- that is consumer ready (as defined by BICON) from all countries
- that is fresh, chilled or frozen
- that is non consumer ready form where the country of sourcing, processing and exporting is New Zealand
- that is non consumer ready form, eviscerated finfish where the country of sourcing, processing and exporting is an approved competent authority
- that are non-Salmonidae family product (see BICON) that meet all documentation requirements
- that are Cartilaginous fish.

Where BICON stipulates a government issued certificate is required from a country **not** listed for [electronic certificate \(eCert\) for imports](#) exchange, accredited persons must provide the government issued certificate number against the goods description field in the ICS.

Table 2 In-scope tariff reference numbers for finfish, AEPCOMM approved arrangement

Tariff	Tariff reference number	Goods
0302 Fish, fresh or chilled excluding fish fillets and other fish meat of 0304	0302.2	Flatfish (<i>Pleuronectidae</i> , <i>Bothidae</i> , <i>Cynoglossidae</i> , <i>Soleidae</i> , <i>Scophthalmidae</i> and <i>Citharidae</i>) excluding edible fish offal of 0302.91.00 to 0302.99.00
	0302.3	Tunas (of the genus <i>Thunnus</i>), skipjack or stripe-bellied bonito (<i>Euthynnus katsuwonus pelamis</i>) excluding edible fish offal of 0302.91.00 to 0302.99.00
	0302.4	Herrings (<i>Clupea harengus</i> , <i>Clupea pallasii</i>), anchovies (<i>Engraulis spp.</i>), sardines (<i>Sardina pilchardus</i> , <i>Sardinops spp.</i>), sardinella (<i>Sardinella spp.</i>), brisling or sprats (<i>Sprattus sprattus</i>), mackerel (<i>Scomber scombrus</i> , <i>Scomber australasicus</i> , <i>Scomber japonicus</i>), Indian mackerels (<i>Rastrelliger spp.</i>), seerfishes (<i>Scomberomorus spp.</i>), jack and horse mackerel (<i>Trachurus spp.</i>), jacks, crevalles (<i>Caranx spp.</i>), cobia (<i>Rachycentron canadum</i>), silver pomfrets (<i>Pampus spp.</i>), Pacific saury (<i>Cololabis saira</i>), scads (<i>Decapterus spp.</i>), capelin (<i>Mallotus villosus</i>), swordfish (<i>Xiphias gladius</i>), Kawakawa (<i>Euthynnus affinis</i>), bonitos (<i>Sarda spp.</i>), marlins, sailfishes, spearfish

Tariff	Tariff reference number	Goods
		(<i>Istiophoridae</i>) excluding edible fish offal of 0302.91.00 to 0302.99.00
	0302.5	Fish of the families <i>Bregmacerotidae</i> , <i>Euclichthyidae</i> , <i>Gadidae</i> , <i>Macrouridae</i> , <i>Melanonidae</i> , <i>Merlucciidae</i> , <i>Moridae</i> and <i>Muraenolepididae</i> excluding edible fish offal of 0302.91.00 to 0302.99.00
	0302.7	Tilapias (<i>Oreochromis</i> spp.), catfish (<i>Pangasius</i> spp., <i>Silurus</i> spp., <i>Clarias</i> spp., <i>Ictalurus</i> spp.), carp (<i>Cyprinus carpio</i> , <i>Carassius</i> , <i>Ctenopharyngodon idellus</i> , <i>Hypophthalmichthys</i> spp., <i>Cirrhinus</i> spp., <i>Mylopharyngodon piceus</i>), eels (<i>Anguilla</i> spp.), Nile perch (<i>Lates niloticus</i>) and snakeheads (<i>Channa</i> spp.) excluding edible fish offal of 0302.91.00 to 0302.99.00
	0302.8	Other fish excluding edible fish offal of 0302.91.00 to 0302.99.00
0303 Fish, frozen, excluding fish fillets and other fish meats of 0304	0303.2	Tilapias (<i>Oreochromis</i> spp.), catfish (<i>Pangasius</i> spp., <i>Silurus</i> spp., <i>Clarias</i> spp., <i>Ictalurus</i> spp.), carp (<i>Cyprinus carpio</i> , <i>Carassius</i> , <i>Ctenopharyngodon idellus</i> , <i>Hypophthalmichthys</i> spp., <i>Cirrhinus</i> spp., <i>Mylopharyngodon piceus</i>), eels (<i>Anguilla</i> spp.), Nile perch (<i>Lates niloticus</i>) and snakeheads (<i>Channa</i> spp.) excluding edible fish offal of 0302.91.00 to 0302.99.00
	0303.3	Flatfish (<i>Pleuronectidae</i> , <i>Bothidae</i> , <i>Cynoglossidae</i> , <i>Soleidae</i> , <i>Scophthalmidae</i> and <i>Citharidae</i>) excluding edible fish offal of 0302.91.00 to 0302.99.00
	0303.4	Tunas (of the genus <i>Thunnus</i>), skipjack or stripe-bellied bonito (<i>Euthynnus (katsuwonus) pelamis</i>) excluding edible fish offal of 0302.91.00 to 0302.99.00
	0303.5	Herrings (<i>Clupea harengus</i> , <i>Clupea pallasii</i>), anchovies (<i>Engraulis</i> spp.), sardines (<i>Sardina pilchardus</i> , <i>Sardinops</i> spp.), sardinella (<i>Sardinella</i> spp.), brisling or sprats (<i>Sprattus sprattus</i>), mackerel (<i>Scomber scombrus</i> , <i>Scomber australasicus</i> , <i>Scomber japonicus</i>), Indian mackerels (<i>Rastrelliger</i> spp.), seerfishes (<i>Scomberomorus</i> spp.), jack and horse mackerel (<i>Trachurus</i> spp.), jacks, crevalles (<i>Caranx</i> spp.), cobia (<i>Rachycentron canadum</i>), silver pomfrets (<i>Pampus</i> spp.), Pacific saury (<i>Cololabis saira</i>), scads (<i>Decapterus</i> spp.), capelin (<i>Mallotus villosus</i>), swordfish (<i>Xiphias</i>

Tariff	Tariff reference number	Goods
		<i>gladius</i>), Kawakawa (<i>Euthynnus affinis</i>), bonitos (<i>Sarda spp.</i>), marlins, sailfishes, spearfish (<i>Istiophoridae</i>) excluding edible fish offal of 0303.91.00 to 0303.99.00
	0303.6	Fish of the families <i>Bregmacerotidae</i> , <i>Euclichthyidae</i> , <i>Gadidae</i> , <i>Macrouridae</i> , <i>Melanonidae</i> , <i>Merlucciidae</i> , <i>Moridae</i> and <i>Muraenolepididae</i> excluding edible fish offal of 0303.91.00 to 0303.99.00
	0303.8	Other fish excluding edible fish offal of 0303.91.00 to 0303.99.00
0304 Fish fillets and other fish meats (whether or not minced, fresh, chilled or frozen)	0304.3	Fresh or chilled fillets of tilapias (<i>Oreochromis spp.</i>), catfish (<i>Pangasius spp.</i> , <i>Silurus spp.</i> , <i>Clarias spp.</i> , <i>Ictalurus spp.</i>), carp (<i>Cyprinus carpio</i> , <i>Carassius</i> , <i>Ctenopharyngodon idellus</i> , <i>Hypophthalmichthys spp.</i> , <i>Cirrhinus spp.</i> , <i>Mylopharyngodon piceus</i>), eels (<i>Anguilla spp.</i>), Nile perch (<i>Lates niloticus</i>) and snakeheads (<i>Channa spp.</i>)
	0304.4	Fresh or chilled fillets of other fish
	0304.5	Other, fresh or chilled
	0304.6	Frozen fillets of tilapias (<i>Oreochromis spp.</i>), catfish (<i>Pangasius spp.</i> , <i>Silurus spp.</i> , <i>Clarias spp.</i> , <i>Ictalurus spp.</i>), carp (<i>Cyprinus carpio</i> , <i>Carassius</i> , <i>Ctenopharyngodon idellus</i> , <i>Hypophthalmichthys spp.</i> , <i>Cirrhinus spp.</i> , <i>Mylopharyngodon piceus</i>), eels (<i>Anguilla spp.</i>), Nile perch (<i>Lates niloticus</i>) and snakeheads (<i>Channa spp.</i>)
	0304.7	Frozen fillets of fish of the families <i>Bregmacerotidae</i> , <i>Euclichthyidae</i> , <i>Gadidae</i> , <i>Macrouridae</i> , <i>Melanonidae</i> , <i>Merlucciidae</i> , <i>Moridae</i> and <i>Muraenolepididae</i>
	0304.8	Frozen fillets of other fish
	0304.90	Other, frozen

1.2 Frozen molluscs for human consumption

Consignments that do not meet the in-scope criteria and are not supported by a valid AEPCOMM pathway in BICON are deemed out of scope.

In scope

The BICON case contains pathways approved under the arrangement:

- seafood (excluding finfish) for human consumption.

The AEPCOMM approved arrangement may be used for import declarations of molluscs:

- that are for human consumption only

- other than oysters and snails that are frozen.

Table 3 In-scope tariff reference numbers for frozen molluscs, AEPCOMM approved arrangement

Tariff	Tariff reference number	Goods
0307 Molluscs, whether in shell or not, live, fresh, chilled, frozen, dried, salted or in brine; smoked molluscs, whether in shell or not, whether or not cooked before or during the smoking process; flours, meals and pellets of molluscs, fit for human consumption	0307.22.00	Scallops, including queen scallops, of the genera <i>Pecten</i> , <i>Chlamys</i> or <i>Placopecten</i> : frozen
	0307.32.00	Mussels (<i>Mytilus spp.</i> , <i>Perna spp.</i>): Frozen
	0307.43.00	Cuttlefish and squid: frozen
	0307.52.00	Octopus (<i>Octopus spp.</i>): frozen
	0307.72.00	Clams, cockles and ark shells (families <i>Arcidae</i> , <i>Arctiidae</i> , <i>Cardiidae</i> , <i>Donacidae</i> , <i>Hiattellidae</i> , <i>Mactridae</i> , <i>Mesodesmatidae</i> , <i>Myidae</i> , <i>Semelidae</i> , <i>Solecurtidae</i> , <i>Tridacnidae</i> and <i>Veneridae</i>): frozen
	0307.83.00	Frozen abalone (<i>halotis spp.</i>)
	0307.84.00	Frozen stomboid conches (<i>Strombus spp.</i>)

1.3 Fish roe and caviar for human consumption

Consignments that do not meet the in-scope criteria and are not supported by a valid AEPCOMM pathway in BICON are deemed out of scope.

In scope

The BICON case contains pathways approved under the arrangement:

- fish roe and caviar for human consumption.

The AEPCOMM approved arrangement may be used for import declarations of fish roe:

- that is fresh, chilled or frozen
- that are non-Salmonidae family product (see BICON) that meet all documentation requirements.

Table 4 In-scope tariff reference numbers for fish roe and caviar, AEPCOMM approved arrangement

Tariff	Tariff reference number	Goods
0302 Fish, fresh or chilled excluding fish fillets and other fish meat of 0304	0302.91.00	Livers, roes, milt
0303	0303.91.00	Livers, roes, milt

2. Dairy products for human consumption from New Zealand

Consignments that do not meet the in-scope criteria and are not supported by a valid AEPCOMM pathway in BICON are deemed out of scope.

In scope

The BICON case contains pathways approved under the arrangement:

- dairy products for human consumption.

The AEPCOMM approved arrangement may be used for import declarations of dairy products:

- made in New Zealand from milk of New Zealand or Australian origin only
- that are for human consumption only.

If BICON stipulates a phytosanitary certificate is required for clearance of a commodity, the accredited person must either record the phytosanitary certificate number in eCert if listed on the [electronic certificate \(eCert\) for imports](#) exchange or if not listed then record the certificate number against the goods description field in the ICS.

Table 5 In-scope tariff reference numbers for NZ dairy products, AEPCOMM approved arrangement

Tariff	Goods
0401	Milk and cream, not concentrated, nor containing added sugar or other sweetening matter
0402	Milk and cream, concentrated or containing added sugar or other sweetening matter
0403	Buttermilk, curdled milk, and cream, yoghurt, kephir and other fermented or acidified milk and cream, whether or not concentrated or containing added sugar or other sweetening matter, or flavoured or containing added fruit, nuts or cocoa
0404	Whey, whether or not concentrated or containing added sugar or other sweetening matter; products consisting of natural milk constituents, whether or not containing added sugar or other sweetening matter, not elsewhere specified or included
0405	Butter and other fats and oils derived from milk; dairy spreads
0406	Cheese and curd

3. New tyres

Consignments that do not meet the in-scope criteria and are not supported by a valid AEPCOMM pathway in BICON are deemed out of scope.

In scope

The BICON case contains pathways approved under the arrangement:

- tyres.

The AEPCOMM approved arrangement may be used for import declarations of new tyres:

- that are imported as airfreight, FCL/X.

Table 6 In-scope tariff reference numbers for new tyres, AEPCOMM approved arrangement

Tariff	Goods
4011	New pneumatic tyres, of rubber

4. New and used vehicles, aircraft and parts, machinery and parts and equipment

Consignments that do not meet the in-scope criteria and are not supported by a valid AEPCOMM pathway in BICON are deemed out of scope.

In scope

The BICON case contains pathways approved under the arrangement:

- new or used vehicles, aircraft and parts
- machinery and equipment.

The AEPCOMM approved arrangement may be used for import declarations of:

- consignments that are not subject to emergency pest measures (e.g. BMSB)
- consignments that are subject to brown marmorated stink bug (BMSB) measures and with valid offshore treatment imported as FCL/X (fully enclosed 6 hard sides), FCL flat rack containers, FCL open top containers and break bulk consignments (AEI number of the provider must be entered in ICS)
- consignments that are subject to BMSB measures not treated offshore and imported as FCL/X (fully enclosed 6 hard sides).

The accredited person must record the unique identifiers against the vehicle identification number (VIN) field for each line in the import declaration of new and used vehicles. This allows officers to cross-reference identifying numbers against the documentation and/or vehicles.

Table 7 In-scope tariff reference numbers for new and used vehicles, aircraft and parts, machinery and equipment AEPCOMM approved arrangement

Tariff	Tariff reference number	Goods
3926 Other articles of plastic and articles of other materials of 3901 to 3914.00.00	3926.30.10	Fittings for furniture, coachwork or like
	3926.30.10.97	Of a kind used as components in passenger motor vehicles
	3926.90	Other articles of plastics and articles of other materials of 3901 to 3914.00.00: other
	3926.90.10.	Other articles of plastics and articles of other materials of 3901 to 3914.00.00: of a kind used as components in passenger motor vehicles
7307 Tube or pipe fittings (e.g. couplings, elbows, sleeves) of iron or steel	7307.9	Tube or pipe fittings (e.g. couplings, elbows, sleeves), of iron or steel: other

Tariff	Tariff reference number	Goods
7320	–	Springs and leaves for springs, of iron or steel
7326 Other articles of iron or steel	7326.90.10	Of a kind used as components in passenger motor vehicles
84	–	Nuclear reactors, boilers, machinery and mechanical appliances; parts thereof
86	–	Railway or tramway locomotives, rolling-stock and parts thereof; railway or tramway track fixtures and fittings and parts thereof; mechanical (including electro-mechanical) traffic signalling equipment of all kinds
87	–	Vehicles other than railway or tramway rolling-stock, and parts and accessories thereof
88	–	Aircraft, spacecraft, and parts thereof
9026	–	Instruments and apparatus for measuring or checking the flow, level, pressure or other variables of liquids or gases (for example, flow meters, level gauges, manometers, heat meters) excluding instruments and apparatus of 9014, 9015, 9028 or 9032
9401 Seats (other than those of 9402), whether or not convertible into beds, and parts thereof	9401.10.00	Seats of a kind used for aircraft
	9401.20.00	Of seats of a kind used for motor vehicles
	9401.90.10	Parts: Of seats of a kind used for aircraft
	9401.90.20	Parts: Of seats of a kind used for motor vehicles

5. Highly processed and manufactured wooden articles

Consignments that do not meet the in-scope criteria and are not supported by a valid AEPCOMM pathway in BICON are deemed out of scope.

In scope

The BICON case contains pathways approved under the arrangement:

- timber and timber products.

The AEPCOMM approved arrangement may be used for import declarations of:

- highly processed wooden articles (as per BICON)
- manufactured wooden articles that do not exceed 200 millimetres in all dimensions
- manufactured wooden articles that do not require an import permit

- manufactured and highly processed wooden articles that are subject to brown marmorated stink bug (BMSB) measures and with valid offshore treatment imported as FCL/X (fully enclosed 6 hard sides), FCL flat rack containers, and FCL open top containers (AEI number of the provider must be entered in ICS)
- manufactured and highly processed wooden articles that are subject to BMSB measures to be fumigated onshore imported as FCL/X (fully enclosed 6 hard sides).

Table 8 In-scope tariff reference numbers for highly processed wooden articles and manufactured wooden articles, AEPComm approved arrangement

Tariff	Tariff reference number	Goods
4408	–	Sheets for veneering (including those obtained by slicing laminated wood), for plywood or for other similar laminated wood and other wood, sawn lengthwise, sliced or peeled, whether or not planed, sanded, spliced or end-jointed, of a thickness not exceeding 6 mm
4409 a	–	Wood (including strips and friezes for parquet flooring, not assembled) continuously shaped (tongued, grooved, rebated, chamfered, v-jointed, beaded moulded, rounded or the like) along any of its edges, ends or faces, whether or not planed, sanded or end-jointed
4412 Plywood, veneered panels and similar laminated wood (other than those of 4412.10.10)	4412.3	Other plywood, consisting solely of sheets of wood (other than bamboo), each ply not exceeding 6 millimetre thickness
	4412.9	Plywood, veneered panels and similar laminated wood (other than those of 4412.10.10): other
4414	–	Wooden frames for paintings, photographs, mirrors or similar objects
4419	–	Tableware and kitchenware; of wood
4418	–	Builders' joinery and carpentry of wood, including cellular wood panels, assembled flooring panels, shingles and shakes
4420	–	Wood marquetry and inlaid wood; caskets and cases for jewellery or cutlery, and similar articles, of wood; statuettes and other ornaments, of wood; wooden articles of furniture not falling in chapter
4421	–	Other articles of wood
7009 Glass mirrors, whether or not framed, including rear view mirrors	7009.9	Other
	7009.92.00	Framed
8302 Base metal mountings, fittings and similar articles suitable for	8302.50.00	Hat-racks, hat-pegs, brackets and similar fixtures

Tariff	Tariff reference number	Goods
furniture, doors, staircases, windows, blinds, coachwork, saddlery, trunks, chests, caskets or the like; base metal hat racks, hat-pegs, brackets and similar fixtures; castors with mountings of base metal; automatic door closers of base metal		
9105 Other clocks	9105.99	Other
9401 Seats (other than those of 9402), whether or not convertible into beds, and parts thereof	9401.30	Swivel seats with variable height adjustment
	9401.40	Seats other than garden seats or camping equipment, convertible into beds
	9401.6	Other seats, with wooden frames
	9401.7	Other seats, with metal frames
	9401.8	Other seats
	9401.90.90	Other
9403 Other furniture & parts thereof (other than 9403.8)	9403.10.00	Metal furniture of a kind used in offices
	9403.20	Other metal furniture
	9403.30	Wooden furniture of a kind used in offices
	9403.40	Wooden furniture of a kind used in the kitchen
	9403.50	Wooden furniture of a kind used in the bedroom
	9403.60	Other wooden furniture
	9403.70	Furniture of plastics
	9403.90	Parts
9404 Mattress supports; articles of bedding and similar furnishing (for example, mattresses, quilts, eiderdowns, cushions, pouffes and pillows) fitted with springs or stuffed or internally fitted with any material or of cellular rubber or plastics, whether or not covered	9404.10	Mattress support
	9404.90.00	Mattress supports; articles of bedding and similar furnishing (for example, mattresses, quilts, eiderdowns, cushions, pouffes and pillows) fitted with springs or stuffed or internally fitted with any material or of cellular rubber or plastics, whether or not covered: other
9405 Lamps and lighting fittings including searchlights and spotlights and parts thereof, not elsewhere specified or included; illuminated signs, illuminated name-plates and the like, having a permanently fixed light source, and parts thereof not elsewhere specified or included:	9405.10	Chandeliers and other electric ceiling or wall lighting fittings, those of a kind used for lighting public open spaces or thoroughfares
	9405.20	Electric table, desk, bedside or floor-standing lamps
	9405.40	Other electric lamps and fittings
	9405.50.90	Non-electrical lamps and lighting fittings - other
	9405.99	Other

Tariff	Tariff reference number	Goods
9506.99.90	9506.99.90	Regulation cricket bats

a For compliance purposes Tariff 4409 will be managed and classified as an unfinished timber product type.

6. Cane and rattan articles and bamboo products

Consignments that do not meet the in-scope criteria and are not supported by a valid AEPCOMM pathway in BICON are deemed out of scope.

In scope

The BICON cases contain pathways approved under the arrangement:

- cane and rattan articles
- bamboo products.

Table 9 In-scope tariff reference numbers for cane and rattan articles and bamboo products, AEPCOMM approved arrangement

Tariff	Tariff reference number	Goods
4601 Plaits and similar products of plaiting materials, whether or not assembled into strips; plaiting materials, plaits and similar products of plaiting material, bound together in parallel strands or woven, in sheet form, whether or not being finished articles (for example, mats, matting, screens)	4601.21.00	Of bamboo
	4601.22.00	Of rattan
	4601.92.00	Of bamboo
	4601.93.00	Of rattan
4602 Basketwork, wickerwork and other articles, made directly to shape from plaiting materials or made up from goods of 4601; articles of loofah	4602.11.00	Of bamboo
	4602.12.00	Of rattan
9401 Seats (other than those of 9402), whether or not convertible into beds, and parts thereof	9401.52.00	Of bamboo
	9401.53.00	Of rattan
9403 Other Furniture & Parts thereof (other than 9403.8)	9403.82.00	Of bamboo
	9403.83.00	Of rattan

7. Unfinished timber and timber products

Consignments that do not meet the in-scope criteria and are not supported by a valid AEPCOMM pathway in BICON are deemed out of scope.

In scope

The BICON cases contain pathways approved under the arrangement:

- timber and timber products
- Burnt Pine Longicorn flight season-affected timber from New Zealand.

The AEPCOMM approved arrangement may be used for import declarations of:

- unfinished timber that are not of the Myrtaceae species

- unfinished timber, from all countries (excluding New Zealand), that is not considered a pathogen risk species for the country of origin or export (as prescribed in BICON)
- unfinished timber from New Zealand that is considered a pathogen risk species (as per BICON) that has an electronic certificate lodged for the import declaration; the certificate must contain all statements required by BICON and the *Minimum documentary and import declaration requirements policy*
- unfinished timber excluding timber imported from Canada under the Canadian Accredited Timber Scheme
- unfinished timber that is subject to Brown Marmorated Stink Bug (BMSB) measures and with valid offshore treatment imported as FCL/X (fully enclosed 6 hard sides), FCL flat rack containers, and FCL open top containers (AEI number of the provider must be entered in ICS)
- unfinished timber that is subject to BMSB measures to be fumigated onshore and imported as FCL/X (fully enclosed 6 hard sides).

If BICON stipulates a phytosanitary certificate is required for clearance of a commodity, the accredited person must either record the phytosanitary certificate number in eCert if listed on the [electronic certificate \(eCert\) for imports](#) exchange or if not listed then record the certificate number against the goods description field in the ICS.

Table 10 In-scope tariff reference numbers for unfinished timber, AEPCOMM approved arrangement

Tariff reference number	Goods
4407	Wood sawn or chipped lengthwise, sliced or peeled, whether or not planed, or sanded or end-jointed, of a thickness exceeding 6mm
4409	Wood (including strips and friezes for parquet flooring, not assembled) continuously shaped (tongued, grooved, rebated, chamfered, v-jointed, beaded moulded, rounded or the like) along any of its edges, ends or faces, whether or not planed, sanded or end-jointed
4418 a	Builders' joinery and carpentry of wood, including cellular wood panels, assembled flooring panels, shingles and shakes

a For compliance purposes Tariff 4418 will be managed and classified as a manufactured and highly processed wooden articles product type.

8. Milled rice for human consumption

Consignments that do not meet the in-scope criteria and are not supported by a valid AEPCOMM pathway in BICON are deemed out of scope.

In scope

The BICON case contains pathways approved under the arrangement:

- rice for human consumption or processing.

The AEPCOMM approved arrangement may be used for import declarations of:

- milled rice imported for human consumption

- milled rice imported as FCL cargo in bags less or equal to 25 kilograms
- milled rice-grain where the outer hull has been removed.

If BICON stipulates a phytosanitary certificate is required for clearance of a commodity, the accredited person must either record the phytosanitary certificate number in eCert if listed on the [electronic certificate \(eCert\) for imports](#) exchange or if not listed then record the certificate number against the goods description field in the ICS.

Table 11 In-scope tariff reference numbers for milled rice, AEPCOMM approved arrangement

Tariff reference number	Goods
1006.30	Rice
1006.40	Rice

9. Fresh onions and shallots from New Zealand, United States and Netherlands

Consignments that do not meet the in-scope criteria and are not supported by a valid AEPCOMM pathway in BICON are deemed out of scope.

In scope

The BICON case contains pathways approved under the arrangement:

- fresh allium.

The AEPCOMM approved arrangement may be used for import declarations of:

- fresh onions and shallots that are grown in New Zealand, the United States or the Netherlands for pathways stated in BICON
- of the scientific name *Allium cepa* or *Allium cepa* var. *aggregatum* or var. *ascalonicum*
- fresh onions or shallots imported for human consumption.

If BICON stipulates a phytosanitary certificate is required for clearance of a commodity, the accredited person must either record the phytosanitary certificate number in eCert if listed on the [electronic certificate \(eCert\) for imports](#) exchange or if not listed then record the certificate number against the goods description field in the ICS.

Table 12 In-scope tariff reference numbers for fresh onions and shallots from New Zealand, United States, Netherlands and China, AEPCOMM approved arrangement

Tariff	Tariff reference number	ACC code	Goods
0703 Onions, shallots, garlic, leeks and other alliacious vegetables, fresh or chilled	0703.10.00	FRPR	Onions and shallots

To identify fresh onions and shallots using AEP, an additional ACC code: **FRPR** must be used to identify that the onions/shallots are fresh and not semi-processed.

10. Semi-processed onions and shallots from China for human consumption

Consignments that do not meet the in-scope criteria and are not supported by a valid AEPCOMM pathway in BICON are deemed out of scope.

In scope

The BICON case contains pathways approved under the arrangement:

- semi-processed fresh allium.

The AEPCOMM approved arrangement may be used for import declarations of:

- semi-processed onions and shallots (defined as peeled, washed and chilled bulbs only) from China.

If BICON stipulates a phytosanitary certificate is required for clearance of a commodity, the accredited person must either record the phytosanitary certificate number in eCert if listed on the [electronic certificate \(eCert\) for imports](#) exchange or if not listed then record the certificate number against the goods description field in the ICS.

Table 13 In-scope tariff reference numbers for semi-processed onions and shallots from China, AEPCOMM approved arrangement

Tariff	Tariff reference number	Goods
0703 Onions, shallots, garlic, leeks and other alliaceous vegetables, fresh or chilled	0703.10.00	Onions and shallots

11. Milling products for human consumption

Consignments that do not meet the in-scope criteria and are not supported by a valid AEPCOMM pathway in BICON are deemed out of scope.

In scope

The BICON cases contain pathways approved under the approved arrangement:

- processed grain and seed products for human consumption
- processed tuber and corm product as for human consumption.

The AEPCOMM approved arrangement may be used for import declarations of:

- processed grain, seed, tuber and corm products for human consumption from non-khapra beetle and khapra beetle countries.

If BICON stipulates a phytosanitary certificate is required for clearance of a commodity, the accredited person must either record the phytosanitary certificate number in eCert if listed on the [electronic certificate \(eCert\) for imports](#) exchange or if not listed then record the certificate number against the goods description field in the ICS.

Table 14 In-scope tariff reference numbers for processed grain and seed products and processed tuber and corm product, AEPCOMM approved arrangement

Tariff	Tariff reference number	Goods
1101 Wheat or meslin flour	1101.00.00	Wheat or meslin flour
1102	–	Cereal flours other than of wheat or meslin
1105	–	Flour, meal, powder, flakes, granules and pellets of potatoes
1106	–	Flour, meal, and powder of the dried leguminous vegetables of 0713, of sago or of roots or tubers of 0714 or of the products of chapter 8

12. Highly refined organic chemicals and substances

Consignments that do not meet the in-scope criteria and are not supported by a valid AEPCOMM pathway in BICON are deemed out of scope.

In scope

The BICON case contains pathways approved under the arrangement:

- highly refined organic chemicals and substances.

The AEPCOMM approved arrangement may be used for import declarations of:

- consignments of highly refined organic chemicals and substances.

Table 15 In-scope tariff reference numbers for highly refined organic chemicals and substances, AEPCOMM approved arrangement

Tariff	Tariff reference number	Goods
1108	–	Starches, inulin
1109 Wheat gluten, whether or not dried	1109.00.00	Wheat gluten, whether or not dried

13. Brown marmorated stink bug (BMSB) target high risk goods

Consignments that do not meet the in-scope criteria and are not supported by a valid AEPCOMM pathway in BICON are deemed out of scope.

In scope

The BICON case contains pathways approved under the arrangement:

- brown marmorated stink bug (BMSB) hitchhiker pests.

The AEPCOMM approved arrangement may be used for import declarations of:

- consignments containing target high risk goods subject to BMSB measures that would not otherwise be subject to biosecurity concerns.

- consignments identified as target high risk goods for BMSB not otherwise listed within this document as in-scope for AEPCOMM and supported by a valid AEPCOMM pathway in BICON
- target high risk goods manufactured in, or shipped from:

Albania	Andorra	Armenia	Austria
Azerbaijan	Belgium	Bosnia and Herzegovina	Bulgaria
Canada	Croatia	Czech Republic	France
Georgia	Germany	Greece	Hungary
Italy	Kosovo	Liechtenstein	Luxembourg
Macedonia	Montenegro	Netherlands	Romania
Russia	Serbia	Slovakia	Slovenia
Switzerland	Spain	Turkey	United States

- consignments that are subject to BMSB measures and with an offshore treatment certificate and are imported as FCL/X (fully enclosed 6 hard sides), FCL flat rack containers, FCL open top containers, and break bulk consignments (AEI number of the provider must be entered in ICS).
- consignments that are subject to BMSB measures not treated offshore imported as FCL/X (fully enclosed 6 hard sides).

Goods in this category require mandatory treatment for BMSB risk.

Table 16 In-scope tariff reference numbers for commodities listed as target high risk goods for BMSB, AEPCOMM approved arrangement

Tariff	Tariff reference number	Goods
36	–	Explosives, pyrotechnic products, matches; pyrophoric alloys; certain combustible preparations
44	–	Wood and articles of wood; wood charcoal
45	–	Cork and articles of cork
57	–	Carpets and other textile floor coverings
68	–	Articles of stone, plaster, cement, asbestos, mica or similar materials
69	–	Ceramic products
70	–	Glass and glassware
72	–	Iron and steel
73	–	Articles of iron or steel
74	–	Copper and articles thereof
75	–	Nickel and articles thereof
76	–	Aluminium and articles thereof
78	–	Lead and articles thereof
79	–	Zinc and articles thereof
80	–	Tin and articles thereof

Tariff	Tariff reference number	Goods
81	–	Other base metals; cermets; articles thereof
82	–	Tools, implements, cutlery, spoons and forks, of base metal; parts thereof of base metal
83	–	Miscellaneous articles of base metals
85	–	Electrical machinery and equipment and parts thereof; sound recorders and reproducers, television image and sound recorders and reproducers, and parts and accessories of such articles
89	–	Ships, boats and floating structures
93	–	Arms and ammunition; parts and accessories thereof

14. Starter cultures

Consignments that do not meet the in-scope criteria and are not supported by a valid AEPCOMM pathway in BICON are deemed out of scope.

In scope

The BICON case contains pathways approved under the arrangement:

- starter cultures (and derivatives).

The AEPCOMM approved arrangement may be used for import declarations of:

- consignments of approved starter cultures for human consumption, therapeutic or cosmetic use.

Table 17 In-scope tariff reference numbers for starter cultures (and derivatives), AEPCOMM approved arrangement

Tariff	Tariff reference number	Goods
2102	2102.10.00	Active yeasts
	2102.20.00	Inactive yeasts; other single-cell micro-organisms, dead
	2102.30.00	Prepared baking powders

15. Manufactured articles containing animal derived material

Consignments that do not meet the in-scope criteria and are not supported by a valid AEPCOMM pathway in BICON are deemed out of scope.

In scope

The BICON case contains pathways approved under the arrangement:

- natural fibres (and their derivatives) of animal origin
- feathers.

The AEPCOMM approved arrangement may be used for import declarations of:

- natural fibres (and their derivatives) of animal origin such as wool/fibre from sheep, goats, or camelids part of a retail ready and/or finished product (including garneted wool)
- natural fibres (and their derivatives) of animal origin such as animal hair, fibre or bristles that have been commercially manufactured and fully finished product
- feathers fully contained within manufactured articles.

Table 18 In-scope tariff reference numbers for manufactured articles containing animal derived material, AEPCOMM approved arrangement

Tariff	Tariff reference number	ACC code	Goods
9401	-	ANIM	Seats (other than those of 9402), whether or not convertible into beds, and parts thereof.
9403	-	ANIM	Other furniture and parts thereof.
9404	-	ANIM	Mattress supports; articles of bedding and similar furnishing (for example mattresses, quilts, eiderdowns, cushions, puffes and pillows) fitted with springs or stuffed or internally fitted with any material or of cellular rubber or plastics, whether or not covered.
9603 (other than 9603.10.00 - Brooms and brushes, consisting of twigs or other vegetable materials bound together, with or without handles.)	-	ANIM	Brooms, brushes (including brushes constituting parts of machines appliances or vehicles), hand operated mechanical floor sweepers, not motorised, mops and feather dusters, prepared knots and tufts for broom or brush making; paint pads and rollers; squeegees (other than roller squeegees).

Note: To identify manufactured articles containing animal derived material using AEP, an additional ACC code: **ANIM** must be used.

16. Prefabricated buildings

Consignments that do not meet the in-scope criteria and are not supported by a valid AEPCOMM pathway in BICON are deemed out of scope.

In scope

The BICON case contains pathways approved under the arrangement:

- prefabricated office, accommodation units and caravans.

The AEPCOMM approved arrangement may be used for import declarations of:

- consignments of caravans new and used; with or without solid timber
- consignments of prefabricated buildings new and used; with or without solid timber
- consignments that are not subject to emergency pest measures (e.g. BMSB)
- consignments that are subject to Brown Marmorated Stink Bug (BMSB) measures and with valid offshore treatment imported as FCL/X (fully enclosed 6 hard sides), FCL flat rack containers, FCL open top containers and break bulk consignments (AEI number of the provider must be entered in ICS)
- consignments that are subject to BMSB measures not treated offshore and imported as FCL/X (fully enclosed 6 hard sides).

Table 19 In-scope tariff reference numbers for prefabricated buildings, AEPCOMM approved arrangement

Tariff	Tariff reference number	Goods
8716	8716.10.00	Trailers and semi-Trailers of the caravan type, for housing or camping
9406	9406.10.00	Prefabricated buildings:- of wood
	9406.90.00	Prefabricated buildings:- Other

17. Honey

Consignments that do not meet the in-scope criteria and are not supported by a valid AEPCOMM pathway in BICON are deemed out of scope.

In scope

The BICON case contains pathways approved under the arrangement:

- bee products.

The AEPCOMM approved arrangement may be used for import declarations of:

- consignments of honey and honeycomb
- consignments with a first point of entry for all states excluding Western Australia.

Table 20 In-scope tariff reference numbers for honey, AEPCOMM approved arrangement

Tariff	Tariff reference number	Goods
0409	0409.00.00	Natural honey

18. Unaccompanied personal effects

Consignments that do not meet the in-scope criteria and are not supported by a valid AEPCOMM pathway in BICON are deemed out of scope.

In scope

The BICON case contains pathways approved under the arrangement:

- unaccompanied personal effects.

The AEPCOMM approved arrangement may be used for import declarations of:

- consignments of personal effects imported for general personal use lodged on a full import declaration
- consignments of bequeathed goods for general personal use lodged on a full import declaration.

Table 21 In-scope tariff reference numbers for personal effects, AEPCOMM approved arrangement

Tariff	Tariff reference number	Goods
9999	9999.40.15	Personal effects for passengers and ships or aircraft crew
	9999.60.24	Last will or intestacy goods not for sale or trade

19. Boats

Consignments that do not meet the in-scope criteria and are not supported by a valid AEPCOMM pathway in BICON are deemed out of scope.

In scope

The BICON case contains pathways approved under the arrangement:

- imported sea-going vessels.

The AEPCOMM approved arrangement may be used for import declarations of:

- new and used imported sea-going vessels imported as cargo
- consignments that are not subject to emergency pest measures (e.g. BMSB)
- consignments that are subject to Brown Marmorated Stink Bug (BMSB) measures and with valid offshore treatment imported as FCL/X (fully enclosed 6 hard sides), FCL flat rack containers, FCL open top containers and break bulk consignments (AEI number of the provider must be entered in ICS)
- consignments that are subject to BMSB measures not treated offshore and imported as FCL/X (fully enclosed 6 hard sides).

Table 22 In-scope tariff reference numbers for boats, AEPCOMM approved arrangement

Tariff	Tariff reference number	Goods
8903	-	Yachts and other vessels for pleasure or sports, rowing boats and canoes
	8903.10.00	Inflatables
	8903.9	Other
	8903.91	Sailboats, with or without auxiliary motors

Tariff	Tariff reference number	Goods
	8903.92	Motorboats, other than outboard motorboats
	8903.99	Other

Appendix 3:Declaration

Please complete the following declaration and return it to the department via email to broker.accreditation@awe.gov.au:

I,		Position held:
Legal entity name (must match ABN/ACN name):		Branch ID:
ABN:	ACN:	Requirements and conditions for approved arrangement class 19.2: automatic entry processing for commodities (Version 8.1)

Declare that:

1. I have the authority to act on behalf of the legal entity listed above.
2. I have read and understood the *Requirements and conditions for approved arrangement class 19.2: automatic entry processing for commodities (Version 8.1)* and agree to carry out biosecurity activities in accordance with them.
3. I acknowledge that by not meeting the conditions the legal entity may be subject to regulatory action as described in the *Approved arrangements general policies and Compliance classifications for broker class approved arrangements*, in accordance with the *Biosecurity Act 2015*, which may include the suspension or revocation of the approved arrangement.
4. I understand that giving false or misleading information is a serious offence punishable by up to 12 months imprisonment.

Signed:	Date:
---------	-------