

# Native forest available and suitable for commercial wood production in northern Australia

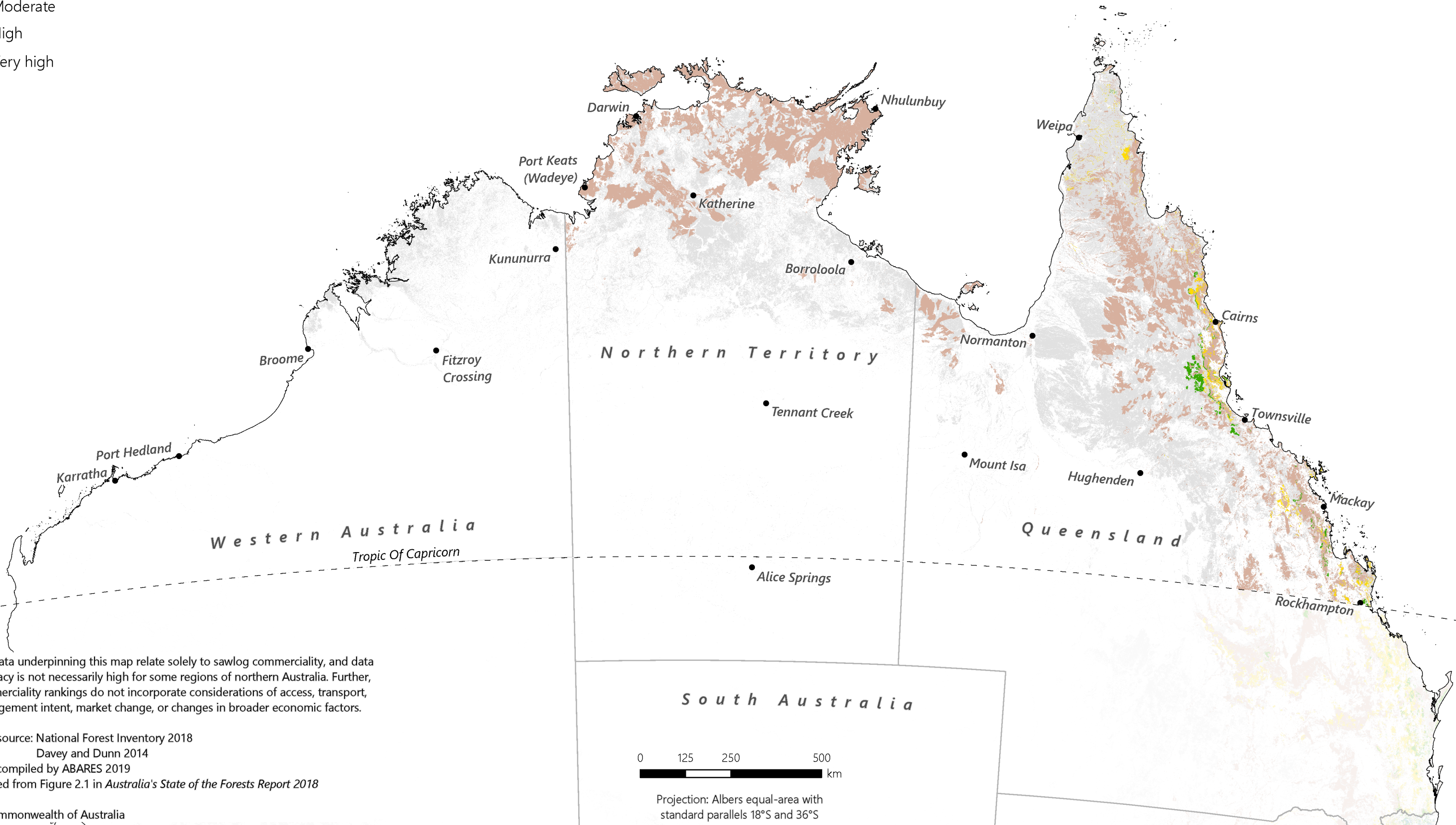


Australian Government  
 Department of Agriculture  
 and Water Resources  
 ABARES

■ All other forest

## Assessed commerciality

- Very low
- Low
- Moderate
- High
- Very high



The data underpinning this map relate solely to sawlog commerciality, and data accuracy is not necessarily high for some regions of northern Australia. Further, commerciality rankings do not incorporate considerations of access, transport, management intent, market change, or changes in broader economic factors.

Data source: National Forest Inventory 2018  
 Davey and Dunn 2014  
 Map compiled by ABARES 2019  
 Derived from Figure 2.1 in *Australia's State of the Forests Report 2018*

© Commonwealth of Australia



Projection: Albers equal-area with  
 standard parallels 18°S and 36°S