

# Australian plantations 2020-21



## Area change from 2019-20

Hardwood	12,600 ha
Softwood	17,900 ha
<b>Total</b>	<b>30,500 ha</b>



## New plantations

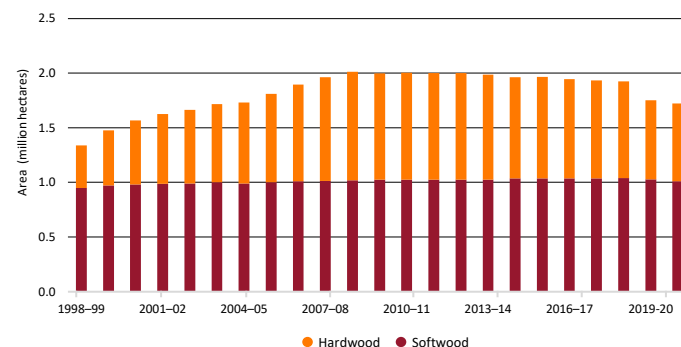
Hardwood	400 ha
Softwood	1,100 ha
<b>Total</b>	<b>1,500 ha</b>



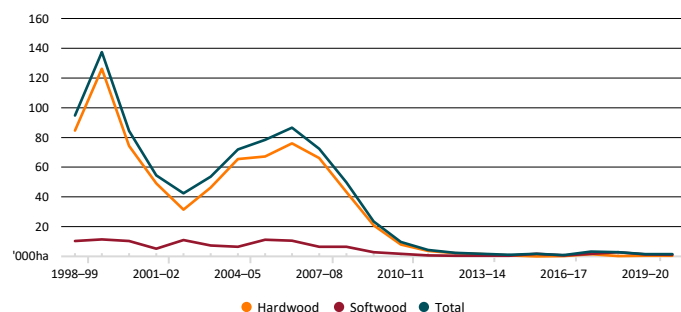
## Total plantation area

Hardwood	711,000 ha
Softwood	1,010,200 ha
<b>Total</b>	<b>1,744,200 ha</b>

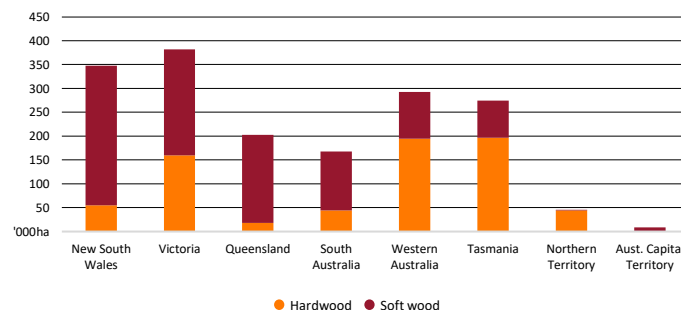
The total plantation area declined further in 2020-21



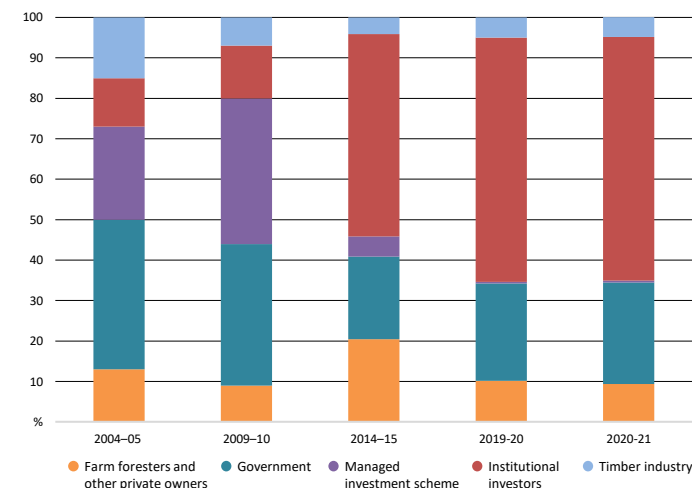
New plantation establishment remained low at around 1500 hectares in 2020-21



Victoria has the largest share of plantation area in 2020-21, followed by New South Wales



Plantation ownership has seen increasing dominance of institutional investors as they purchased most MIS plantations and some public plantations



National Plantation Inventory regions

