


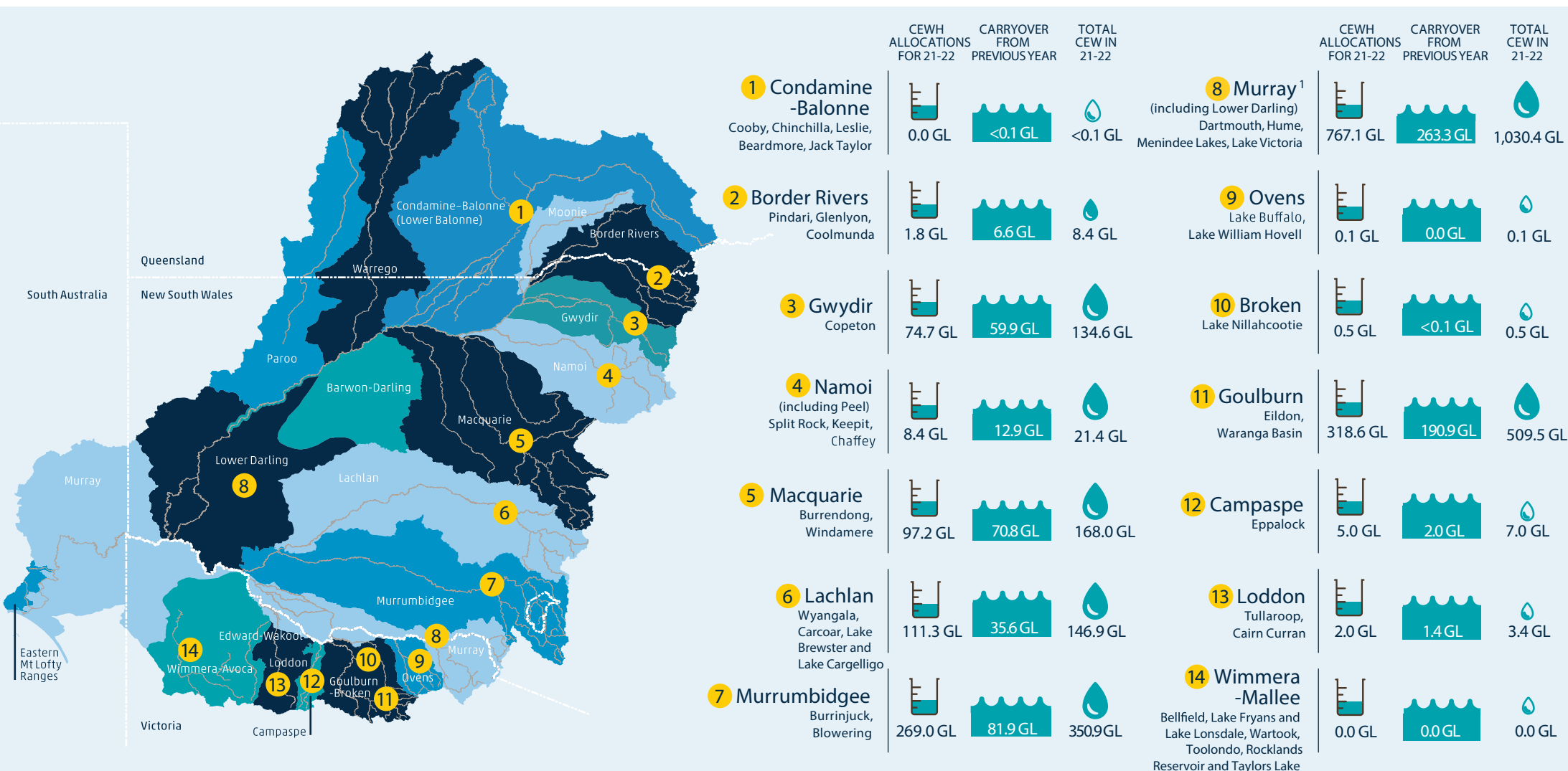


# Commonwealth environmental water allocations and carryover in regulated Basin catchments (as at 30 November 2021)

The Commonwealth Environmental Water Holder receives the same allocations and is required to follow the same carryover, trade and water use rules as all other equivalent water licence holders. Carryover is a strategic planning tool that provides the flexibility to use water from the previous year to meet future season demands.

## Commonwealth Environmental Water in Basin Storages

CEWH ALLOCATIONS FOR 21-22	CARRYOVER FROM PREVIOUS YEAR	TOTAL CEWH IN 21-22
		
1,656 GL	725 GL	2,381 GL



<sup>1</sup> Includes NSW, Vic and SA Murray accounts. Allocation held against the Commonwealth's SA Murray entitlement forms part of the 1,154 GL of SA entitlement flow managed in accordance with Part XII, Subdivision B of the Murray-Darling Basin Agreement ([http://www.austlii.edu.au/au/legis/cth/consol\\_act/wa200783/sch1.html](http://www.austlii.edu.au/au/legis/cth/consol_act/wa200783/sch1.html)). The entitlement flow is managed by the MDBA through a combination of unregulated tributary inflows and releases from upstream NSW and Victorian storages.