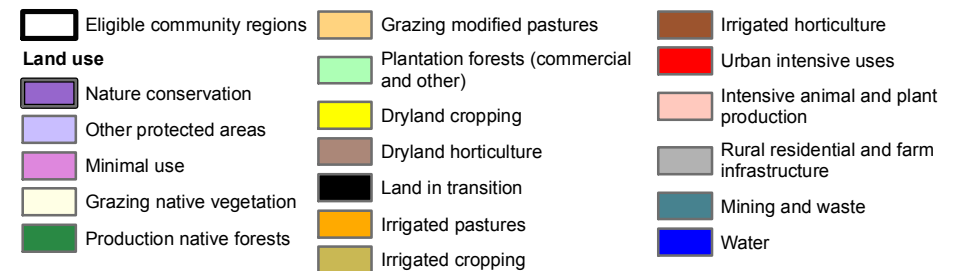
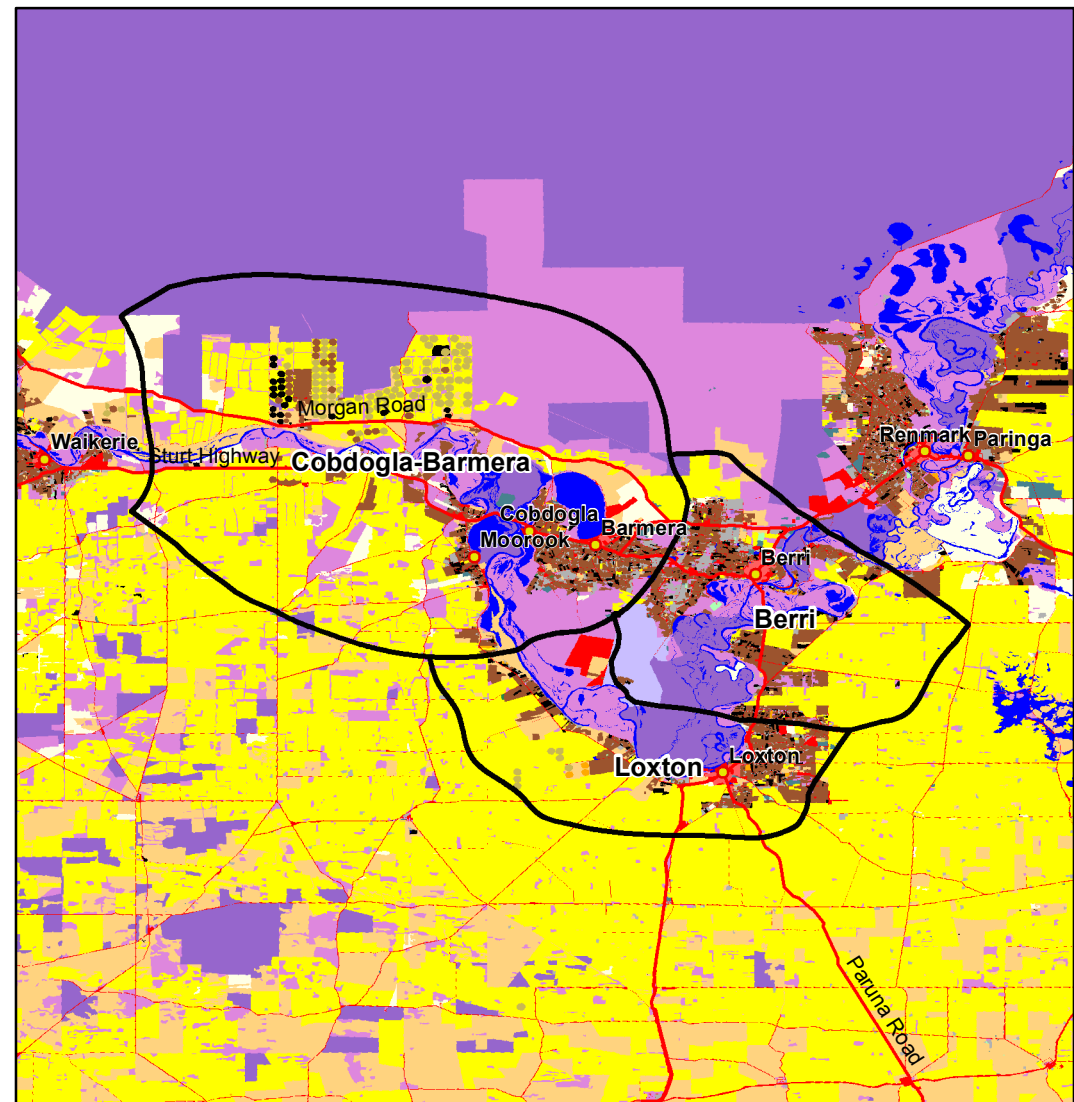


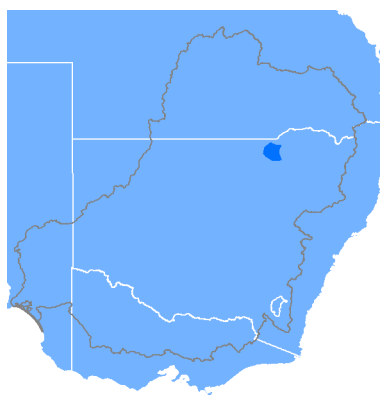
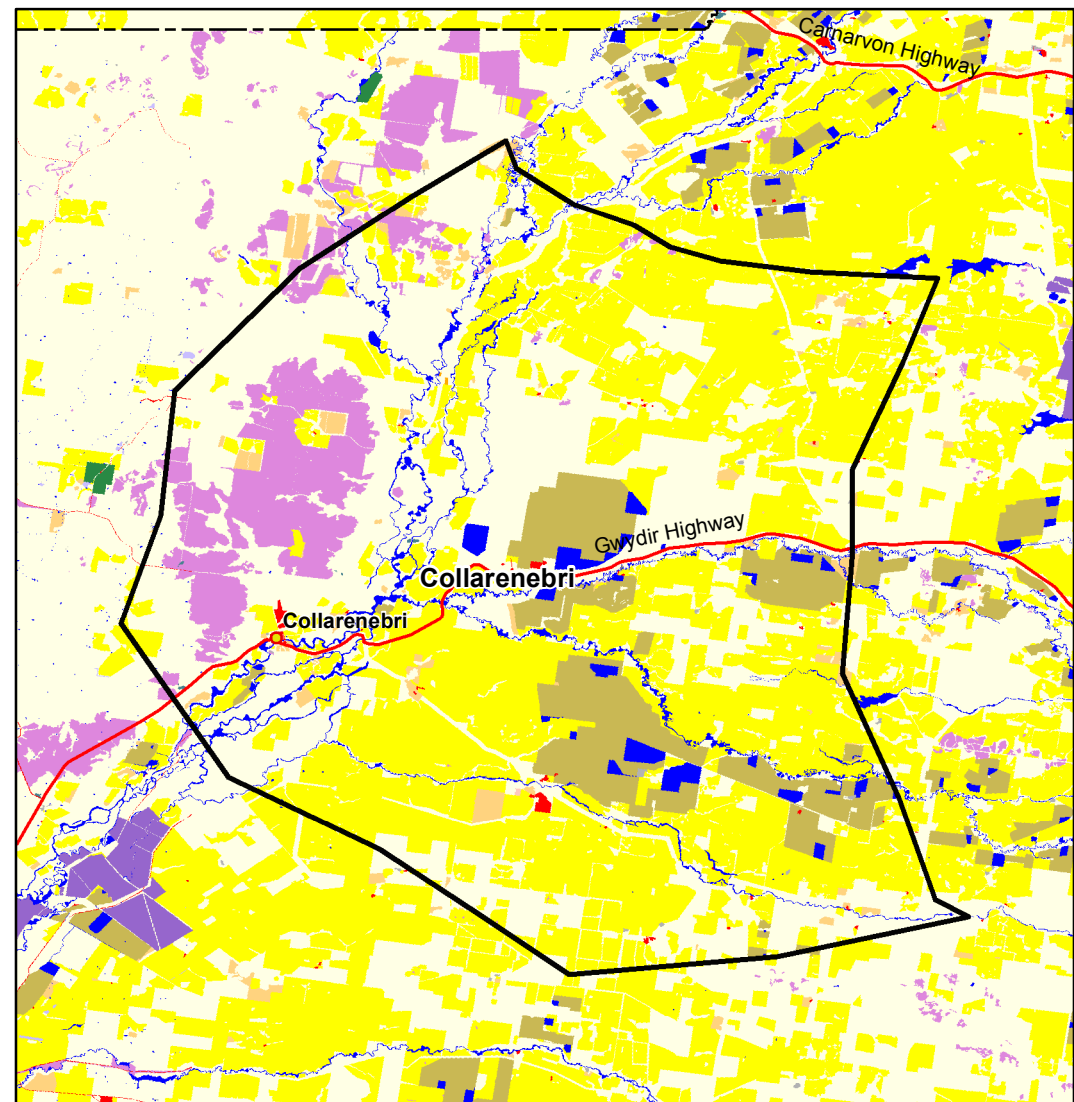
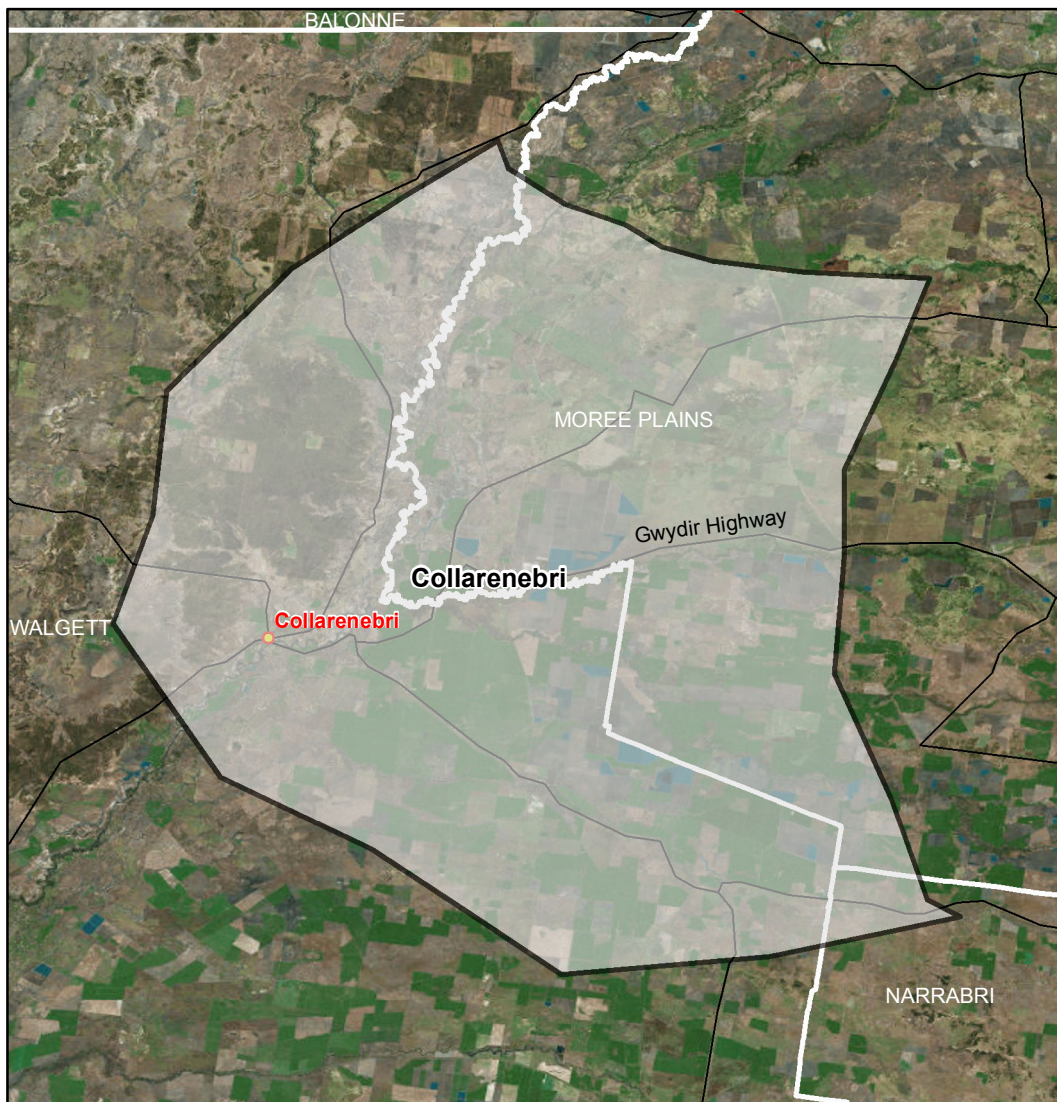
Data sources
 ABARES 2017, Catchment Scale Land Use of Australia - Update September 2017,
 PSMA 2018, Local Government Areas
 MDBA 2018, Community regions,

Map produced by ABARES, Department of Agriculture and Water Resources, January 2019.



Cobdogla Barmera, Loxton and Berri Map

Communities eligible for funding under the MDB Economic Development Program



- Eligible community regions
- Local Government Areas
- Towns

0 12.5 25 50 km

Datum GDA 94, Geographic Coordinate system

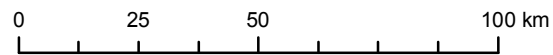
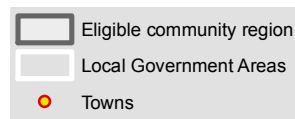
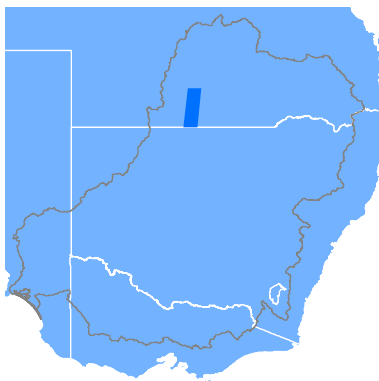
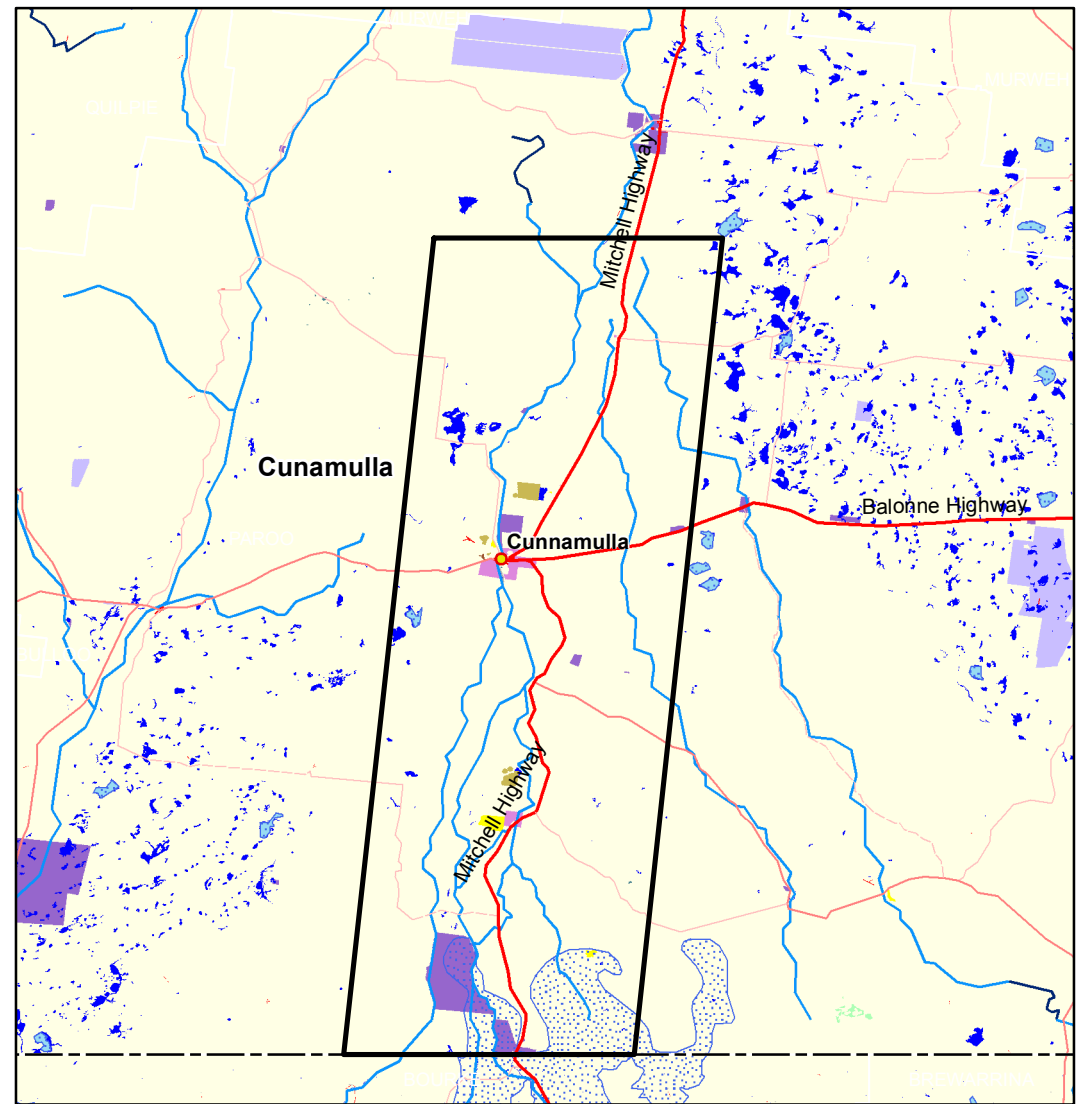
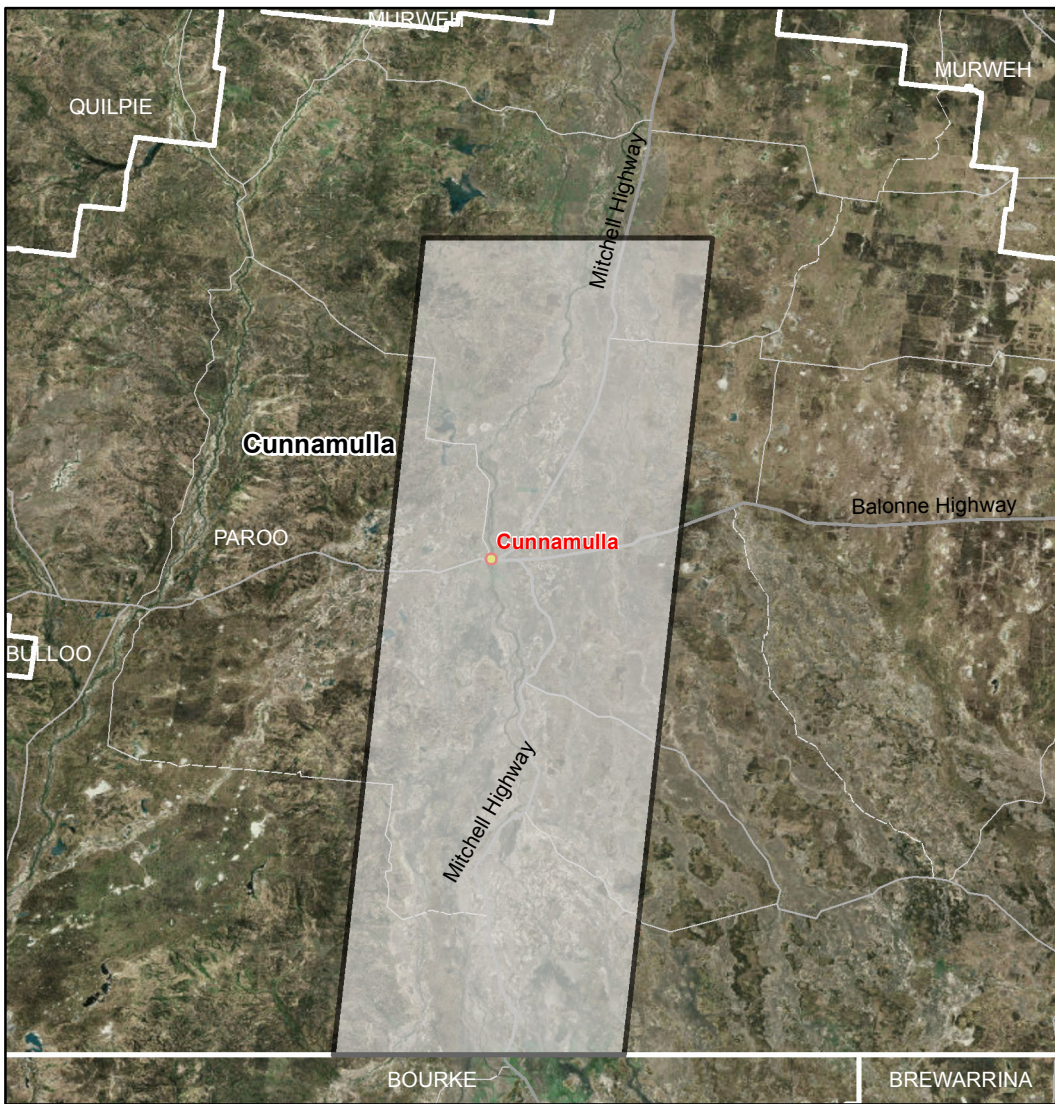
Data sources
ABARES 2017, Catchment Scale Land Use of Australia - Update September 2017,
PSMA 2018, Local Government Areas
MDBA 2018, Community regions,

Map produced by ABARES, Department of Agriculture and Water Resources, January 2019.

- Eligible community regions
- Dryland cropping
- Nature conservation
- Dryland horticulture
- Minimal use
- Irrigated pastures
- Production native forests
- Irrigated cropping
- Irrigated horticulture
- Urban intensive uses
- Intensive animal and plant production
- Rural residential and farm infrastructure
- Mining and waste
- Water

Collarenebri Map

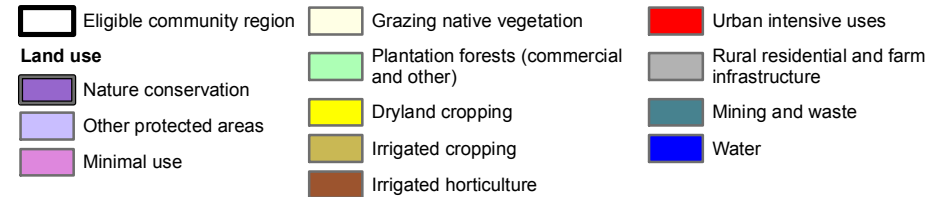
Communities eligible for funding under the MDB Economic Development Program



Datum GDA 94, Geographic Coordinate system

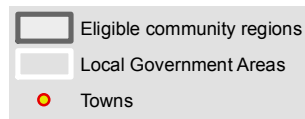
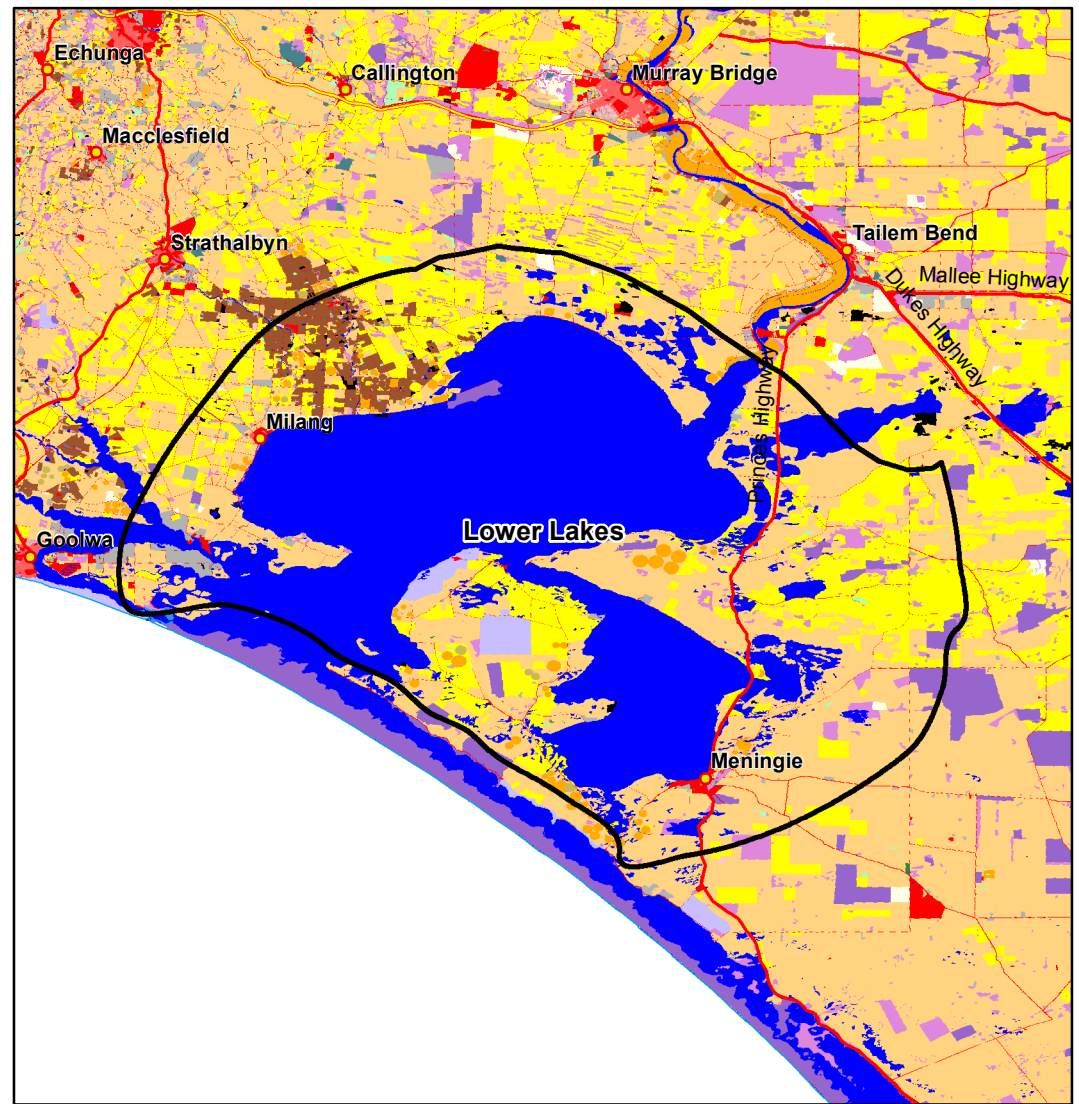
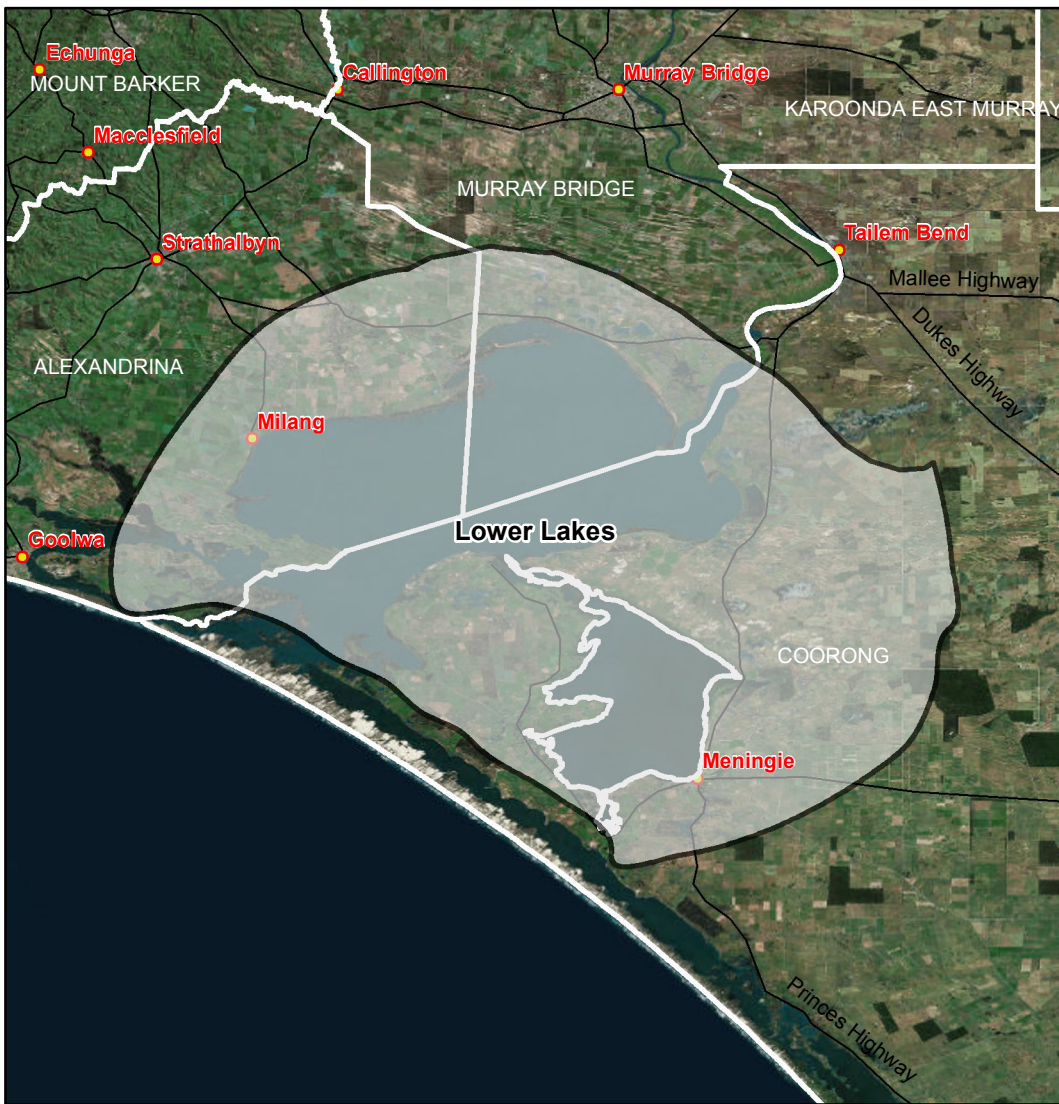
Data sources
ABARES 2017, Catchment Scale Land Use of Australia - Update September 2017,
PSMA 2018, Local Government Areas and localities

Map produced by ABARES, Department of Agriculture and Water Resources, January 2019.



Cunnamulla Map

Communities eligible for funding under the MDB Economic Development Program

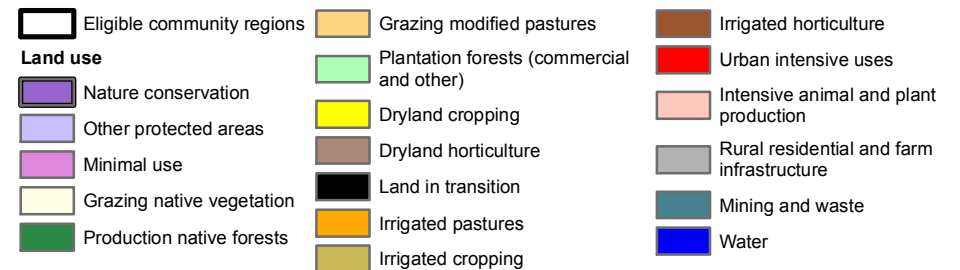


0 10 20 40 km

Datum GDA 94, Geographic Coordinate system

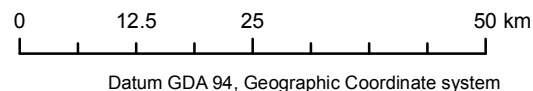
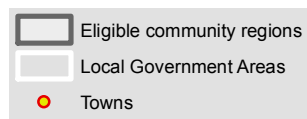
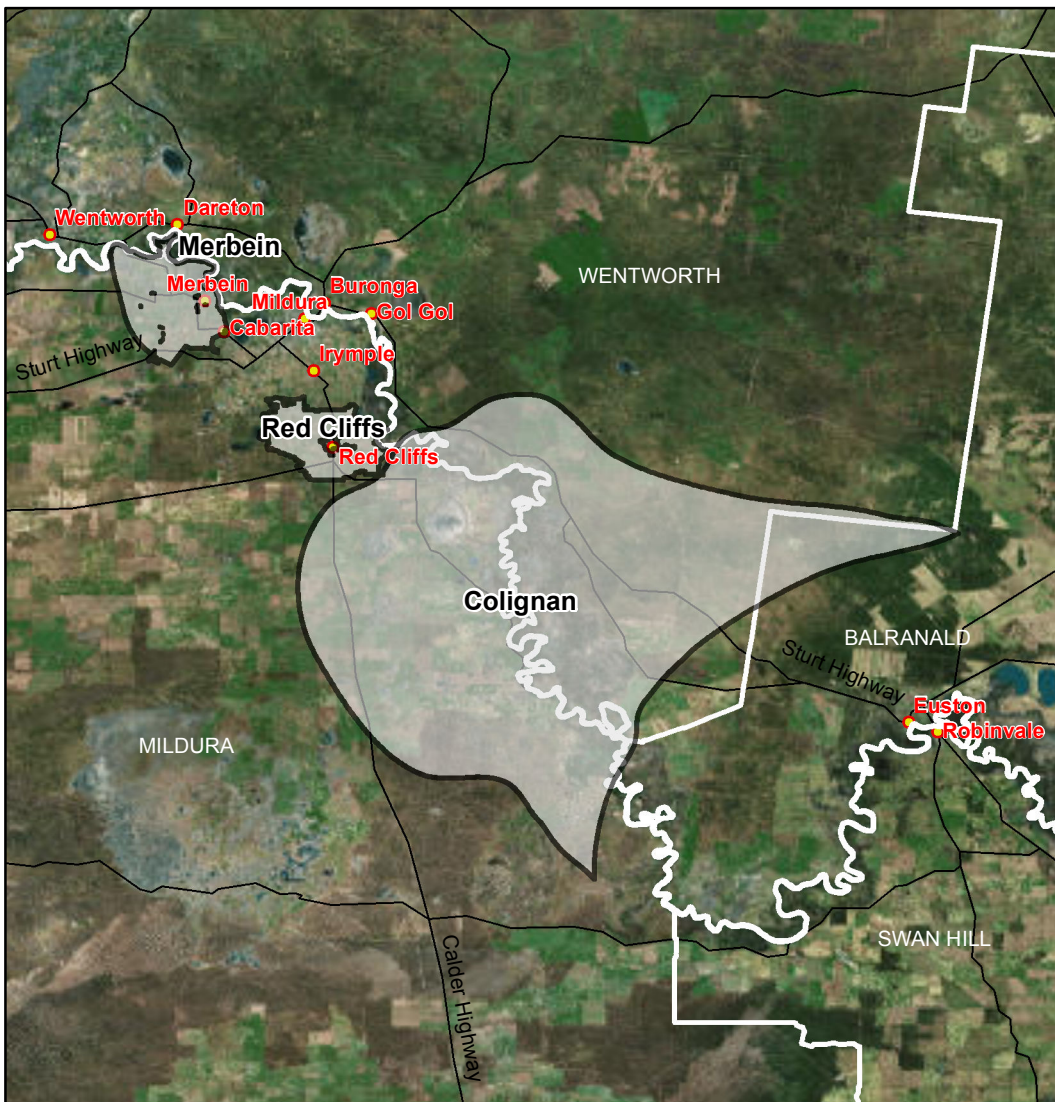
Data sources
 ABARES 2017, Catchment Scale Land Use of Australia - Update September 2017,
 PSMA 2018, Local Government Areas
 MDBA 2018, Community regions,

Map produced by ABARES, Department of Agriculture and Water Resources, January 2019.



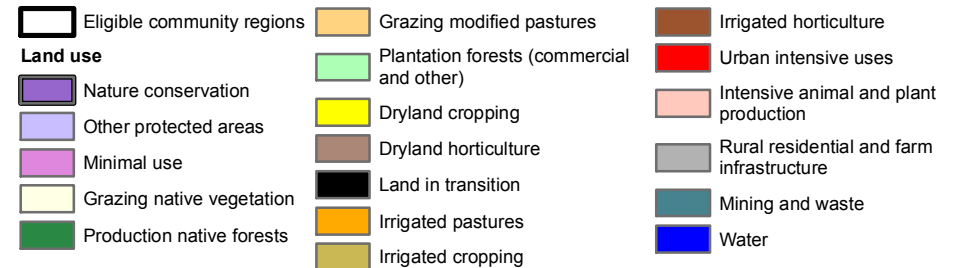
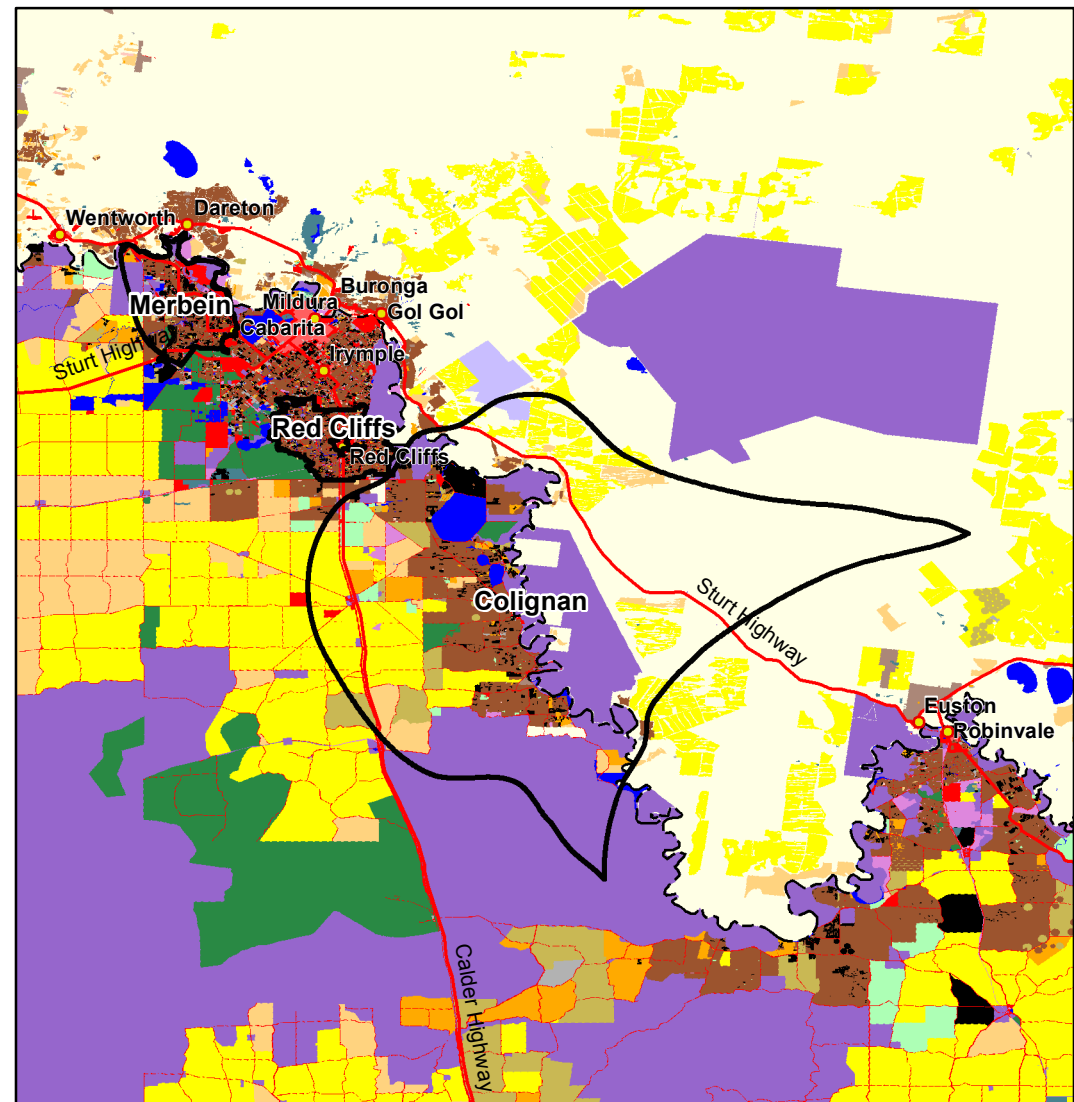
Lower Lakes Map

Communities eligible for funding under the MDB Economic Development Program



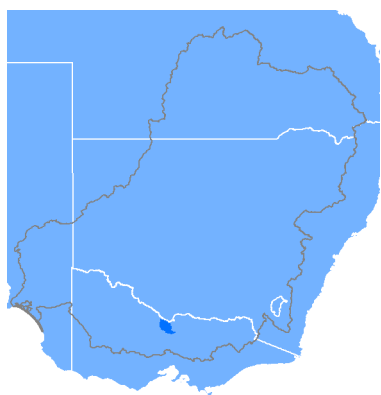
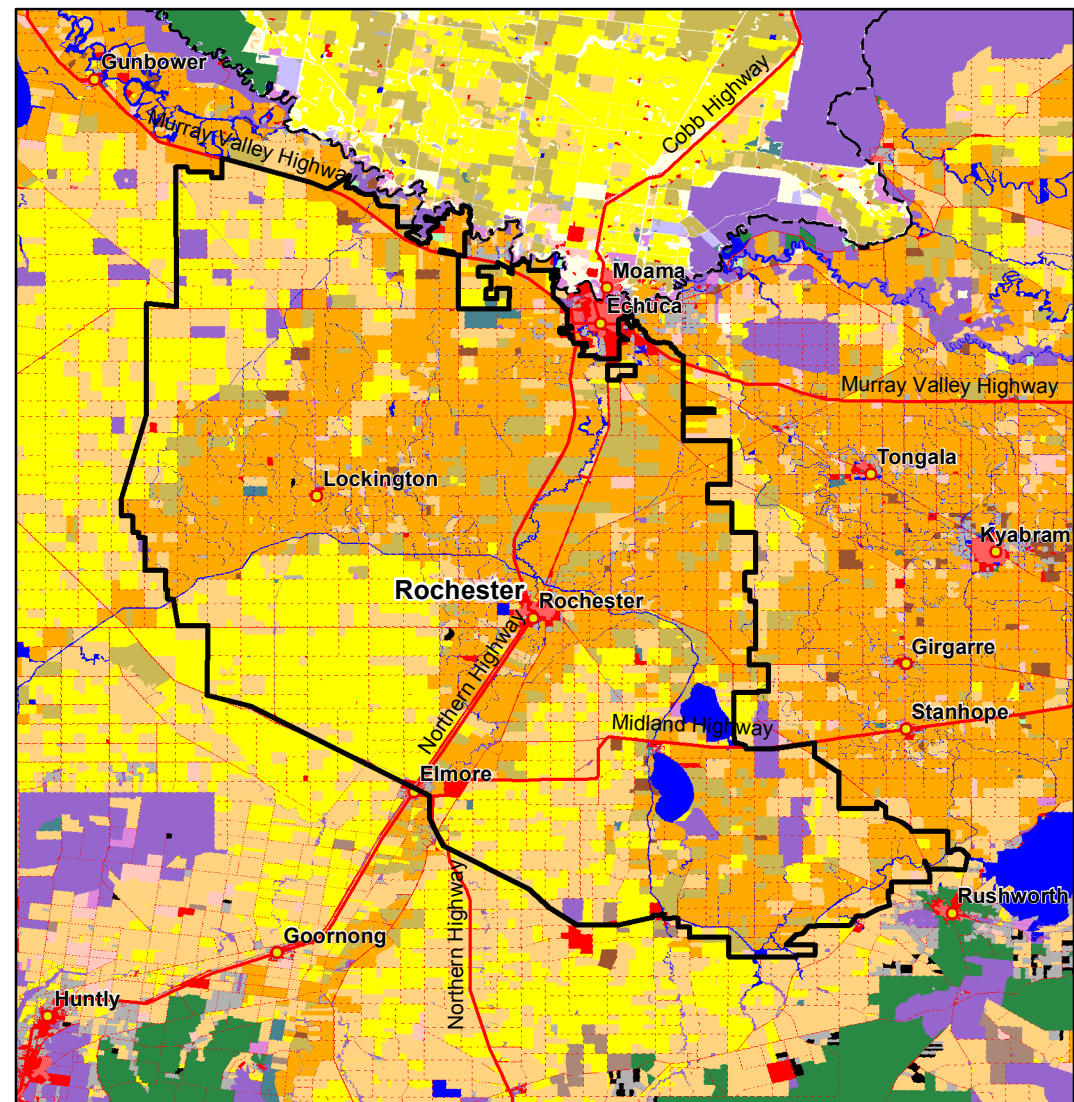
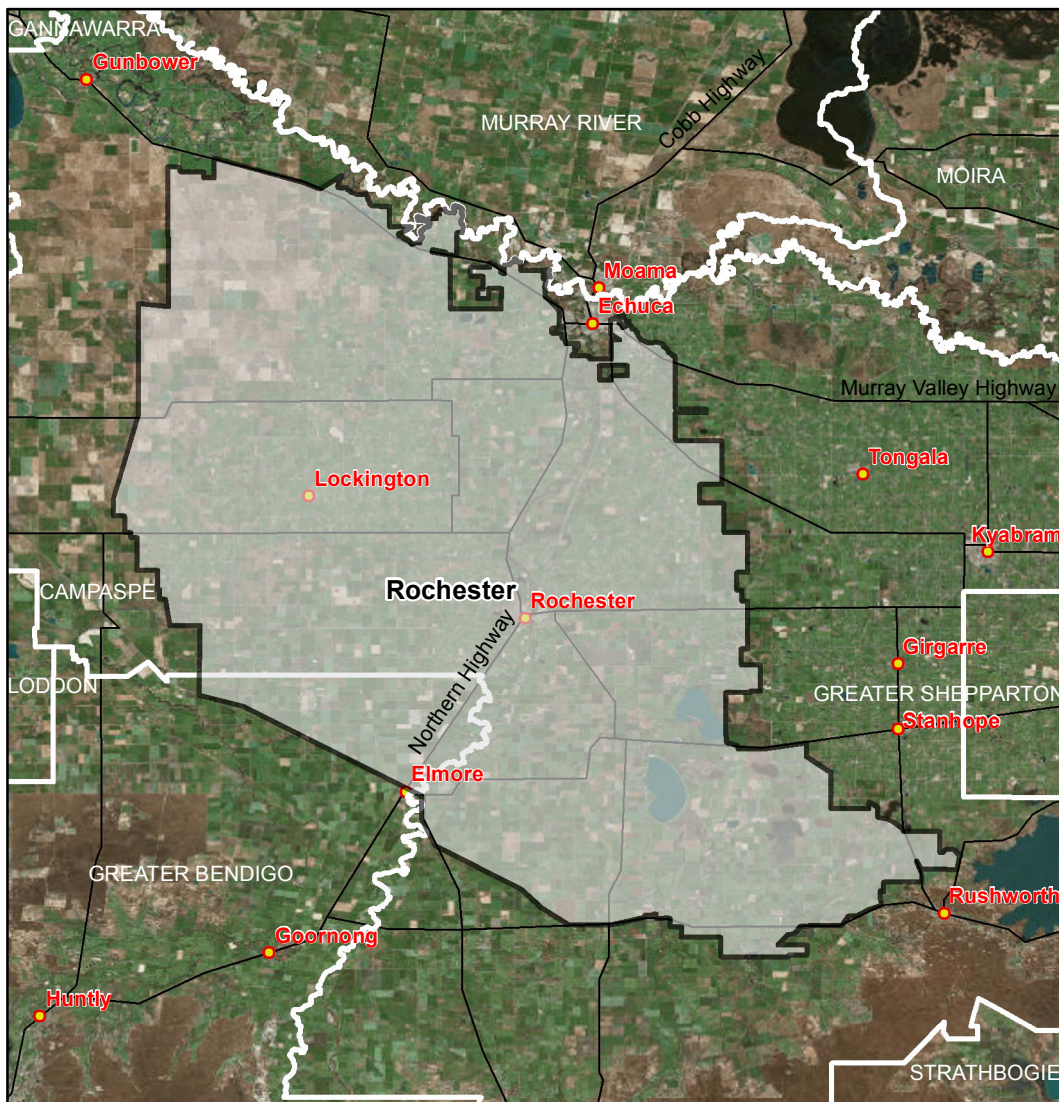
Data sources
 ABARES 2017, Catchment Scale Land Use of Australia - Update September 2017,
 PSMA 2018, Local Government Areas
 MDBA 2018, Community regions,

Map produced by ABARES, Department of Agriculture and Water Resources, January 2019.



Merbein, Red Cliffs and Colignan Map

Communities eligible for funding under the MDB Economic Development Program



- Eligible community regions
- Local Government Areas
- Towns

0 10 20 40 km

Datum GDA 94, Geographic Coordinate system

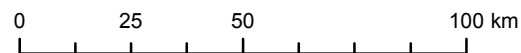
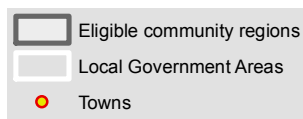
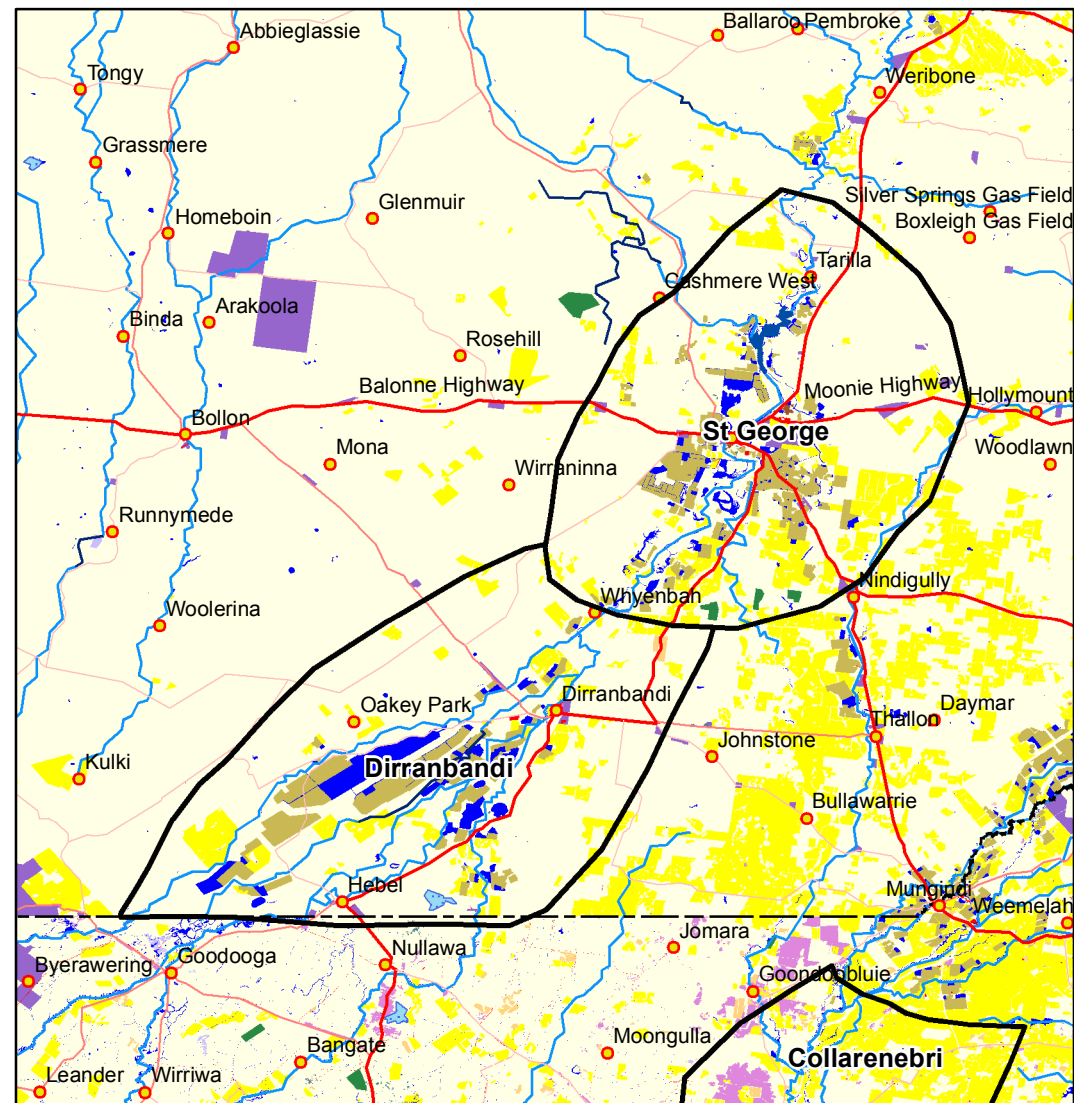
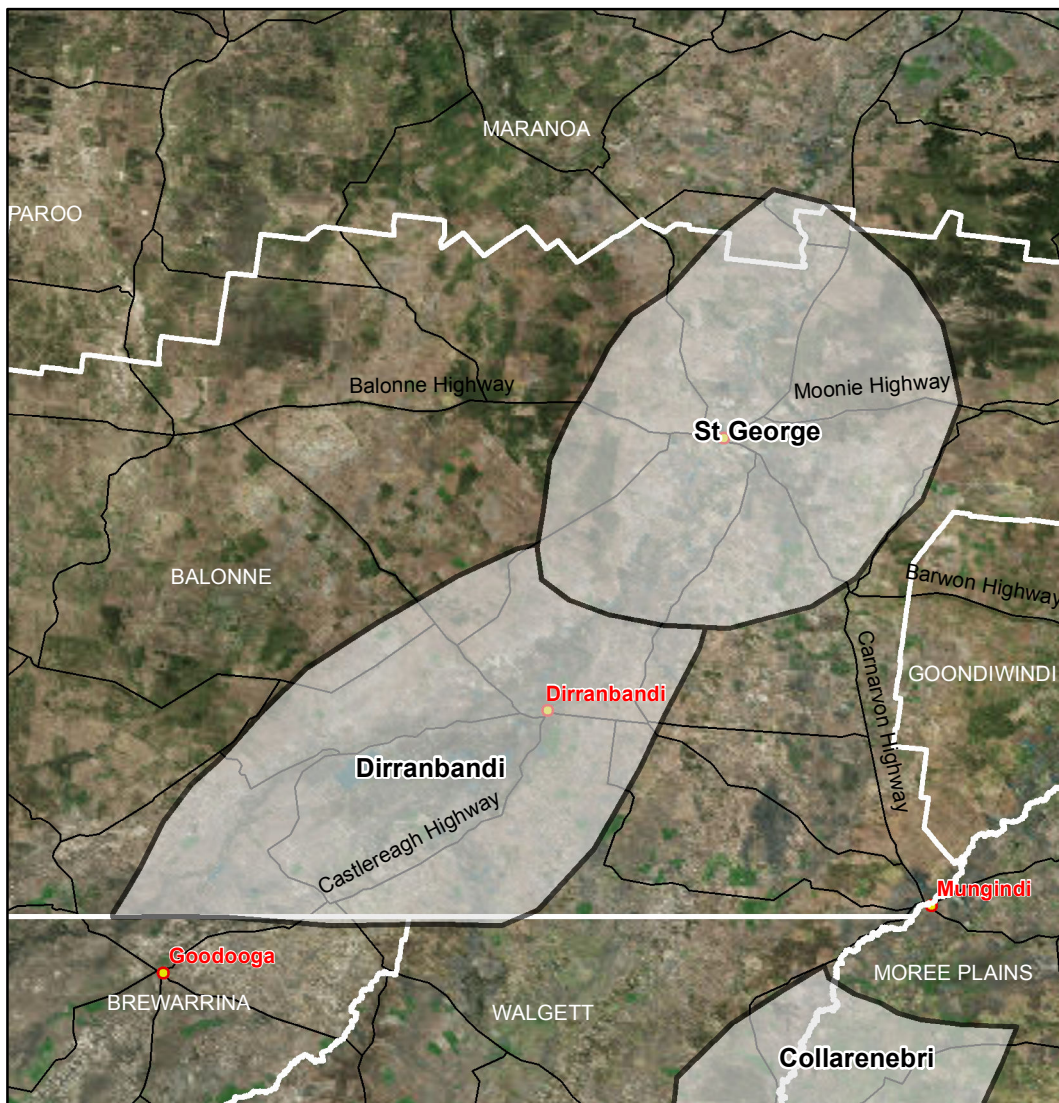
Data sources
ABARES 2017, Catchment Scale Land Use of Australia - Update September 2017,
PSMA 2018, Local Government Areas
MDBA 2018, Community regions,

Map produced by ABARES, Department of Agriculture and Water Resources, January 2019.

- | | | |
|--|---|--|
| Eligible community regions | Grazing modified pastures | Irrigated horticulture |
| Land use | Plantation forests (commercial and other) | Urban intensive uses |
| Nature conservation | Dryland cropping | Intensive animal and plant production |
| Other protected areas | Dryland horticulture | Rural residential and farm infrastructure |
| Minimal use | Land in transition | Mining and waste |
| Grazing native vegetation | Irrigated pastures | Water |
| Production native forests | Irrigated cropping | |

Rochester Map

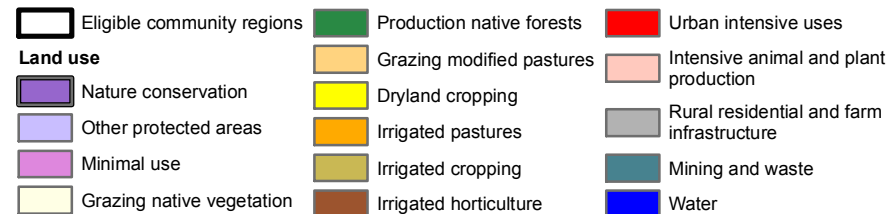
Communities eligible for funding under the MDB Economic Development Program



Datum GDA 94, Geographic Coordinate system

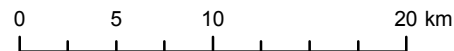
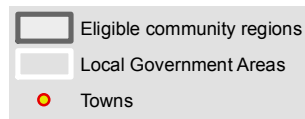
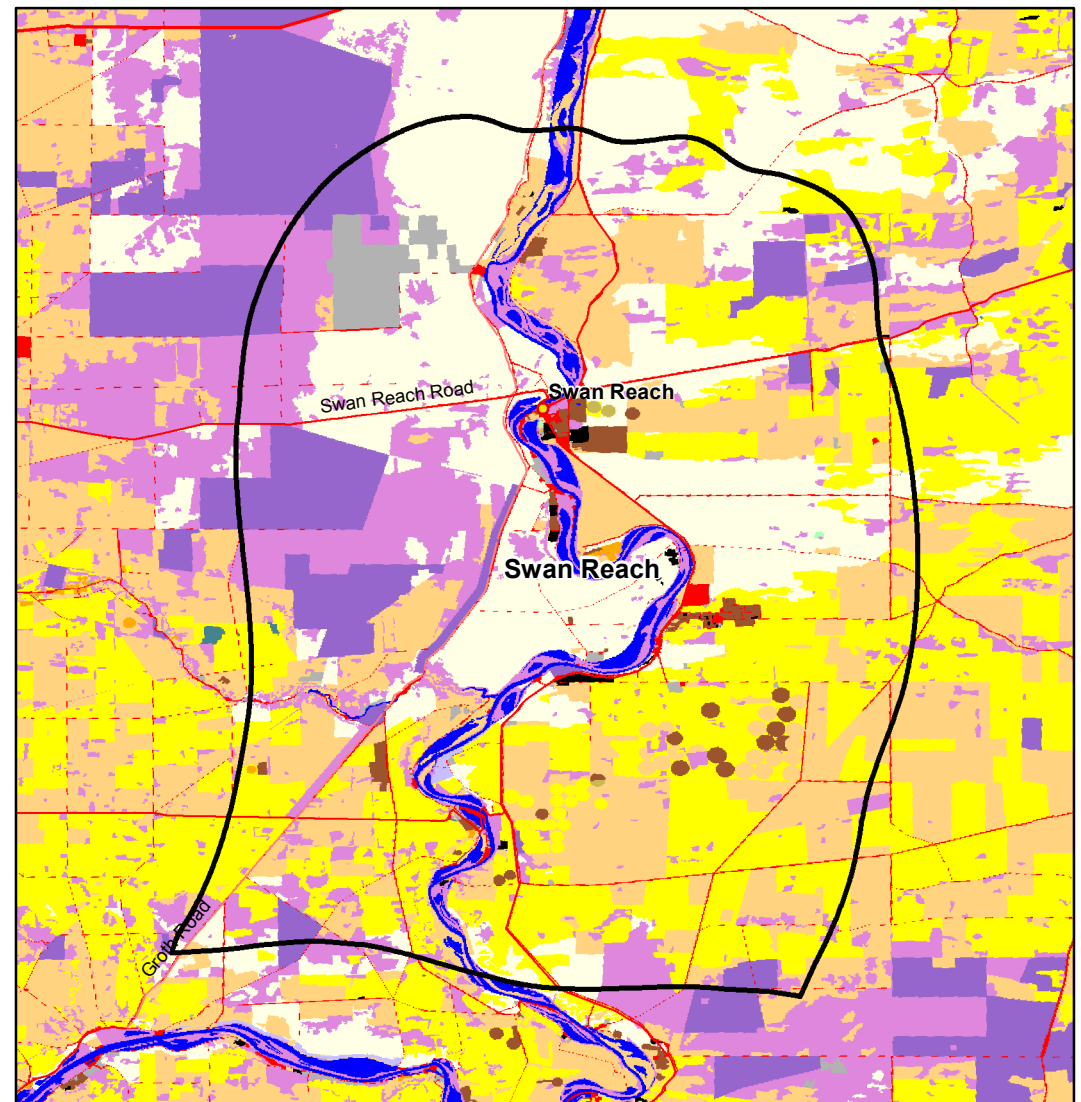
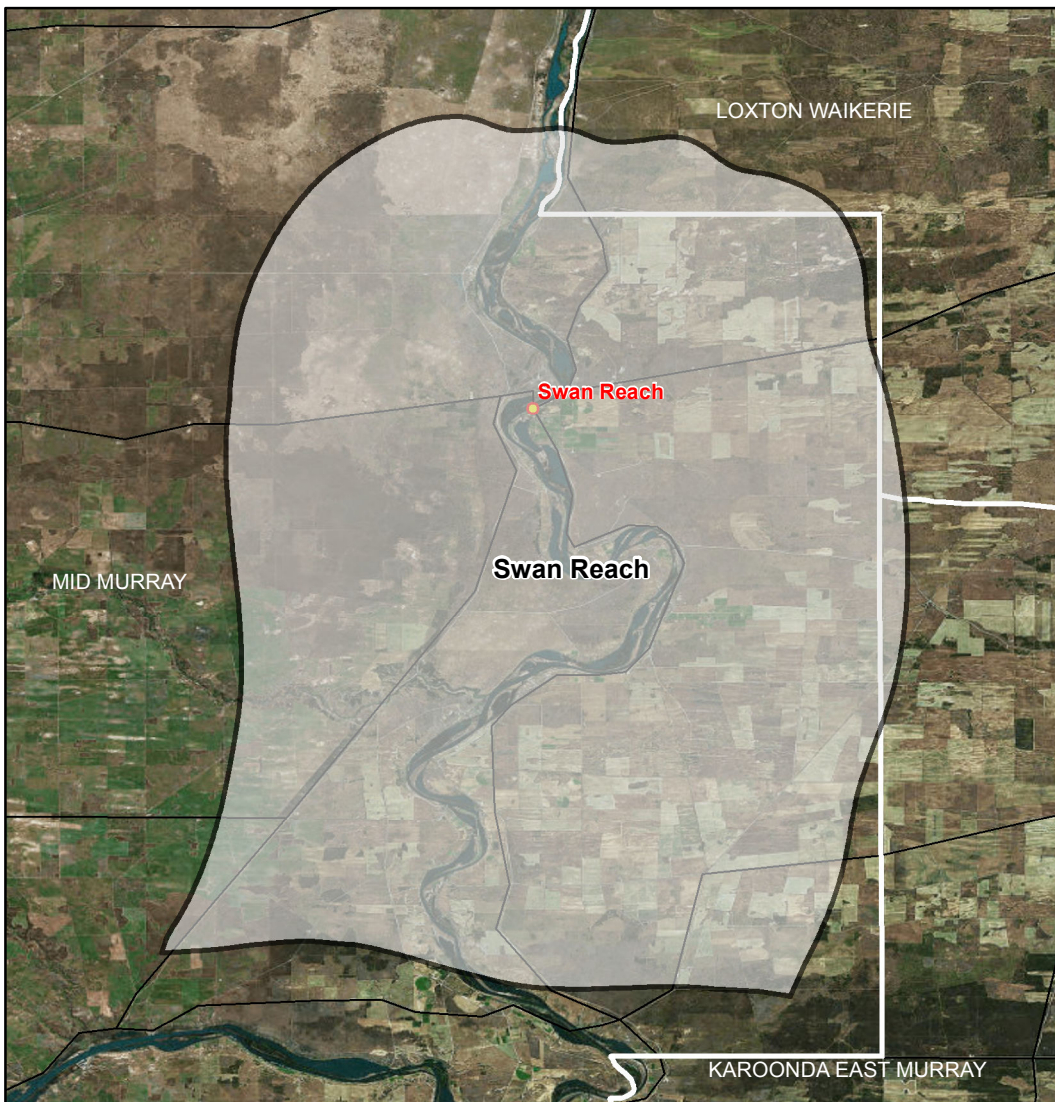
Data sources
 ABARES 2017, Catchment Scale Land Use of Australia - Update September 2017,
 PSMA 2018, Local Government Areas
 MDBA 2018, Community regions,

Map produced by ABARES, Department of Agriculture and Water Resources, January 2019.



St George, Dirranbandi Map

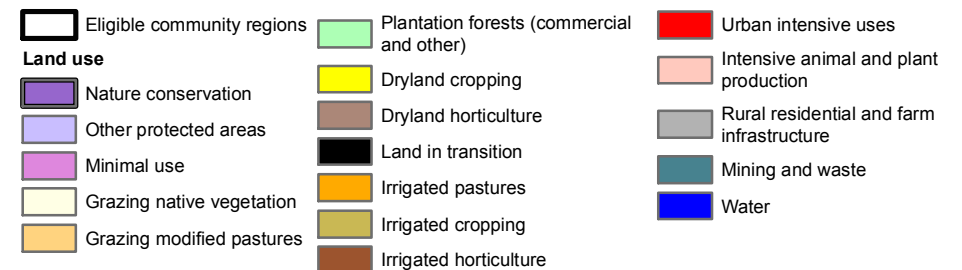
Communities eligible for funding under the MDB Economic Development Program



Datum GDA 94, Geographic Coordinate system

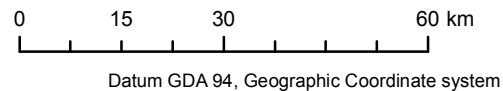
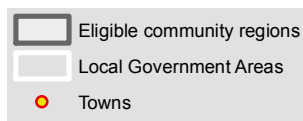
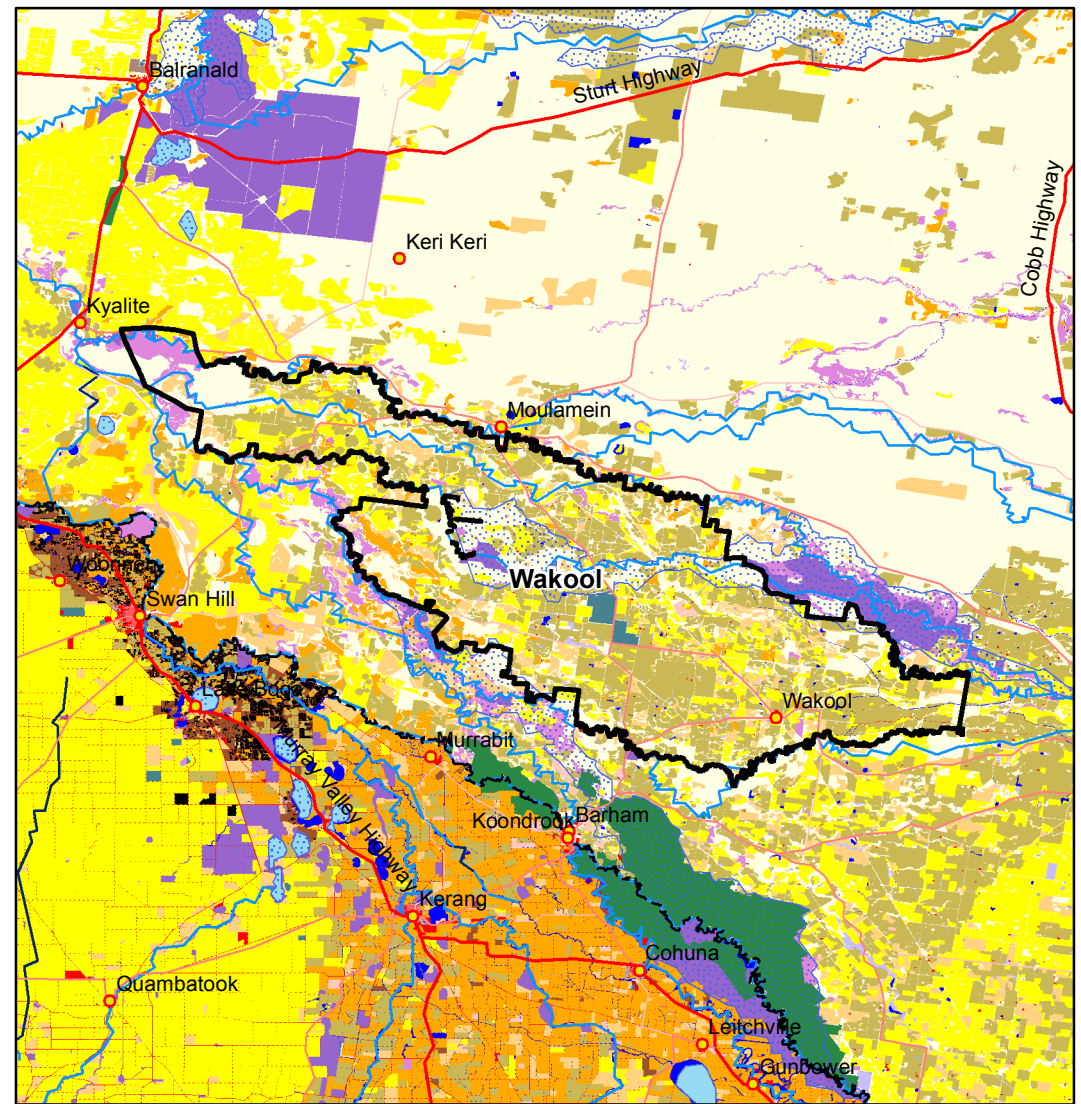
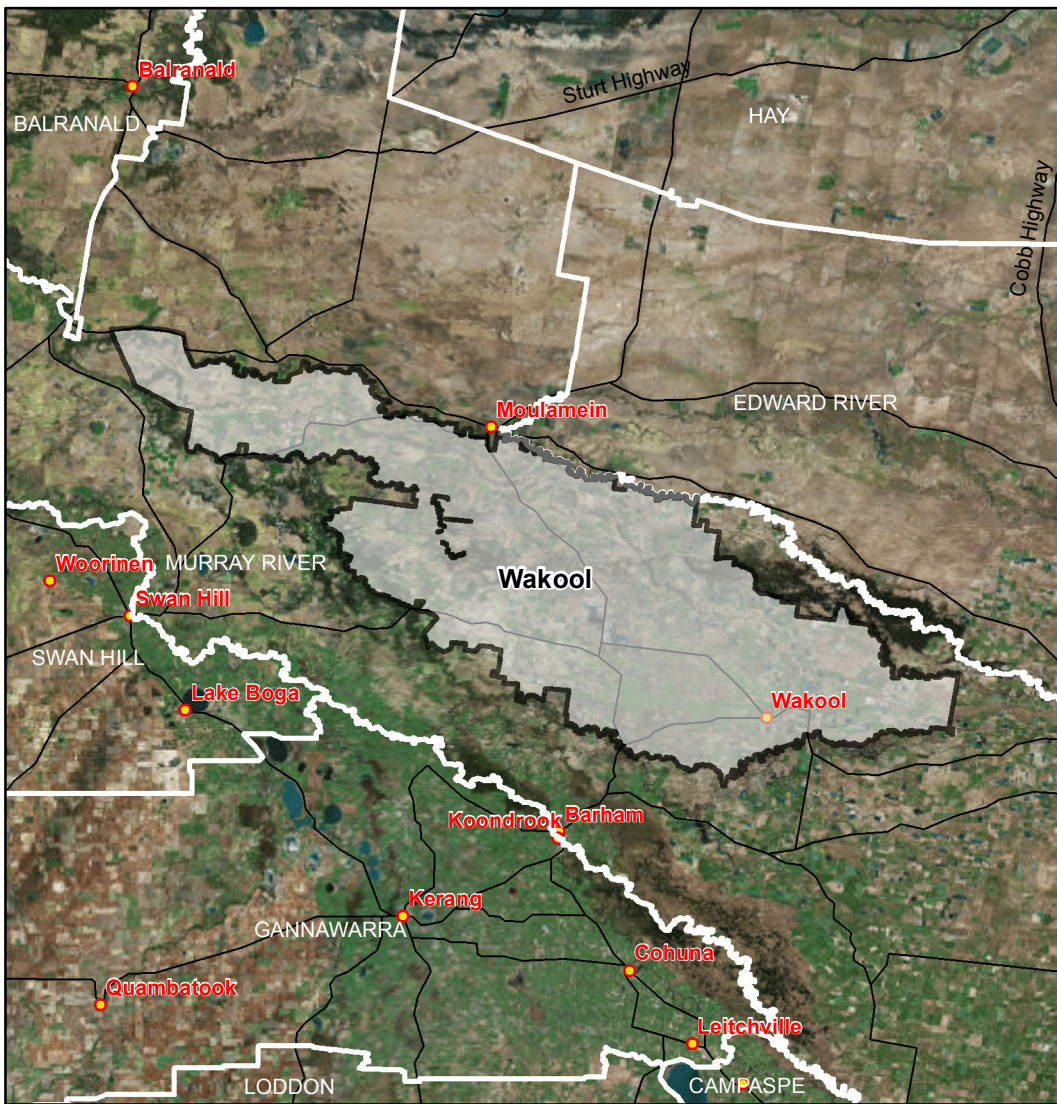
Data sources
ABARES 2017, Catchment Scale Land Use of Australia - Update September 2017,
PSMA 2018, Local Government Areas
MDBA 2018, Community regions,

Map produced by ABARES, Department of Agriculture and Water Resources, January 2019.



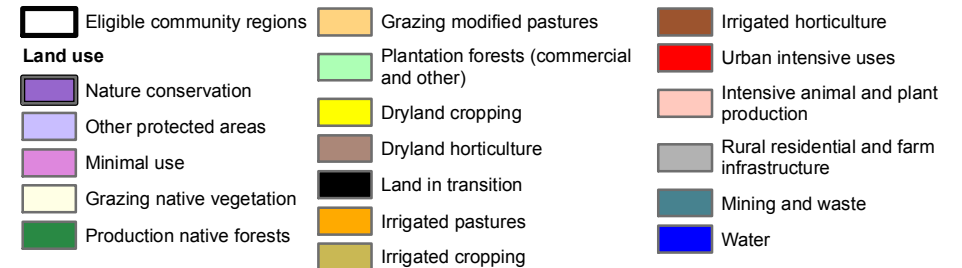
Swan Reach Map

Communities eligible for funding under the MDB Economic Development Program



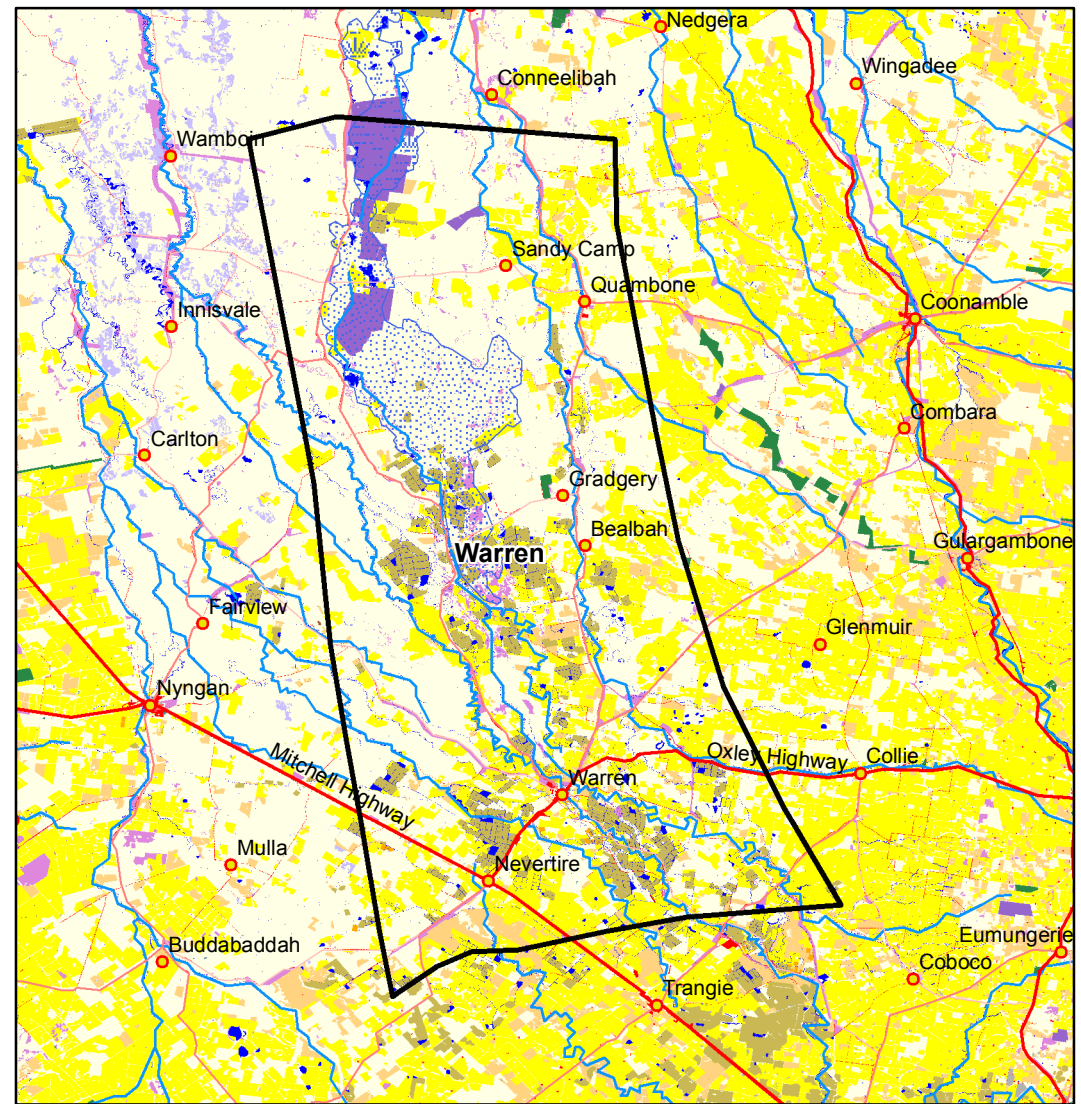
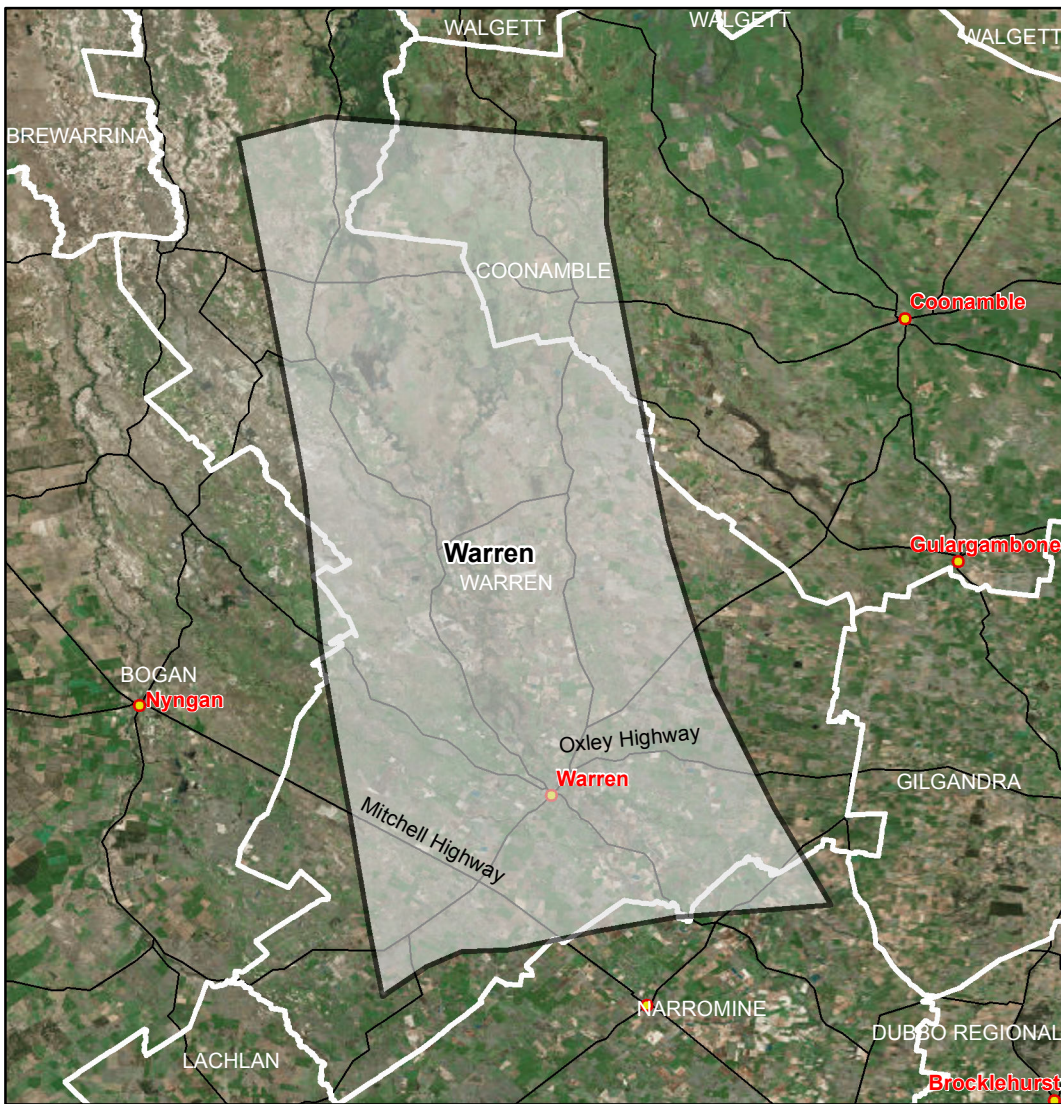
Data sources
ABARES 2017, Catchment Scale Land Use of Australia - Update September 2017,
PSMA 2018, Local Government Areas
MDBA 2018, Community regions,

Map produced by ABARES, Department of Agriculture and Water Resources, January 2019.



Wakool Map

Communities eligible for funding under the MDB Economic Development Program



- Eligible community regions
- Local Government Areas
- Towns

0 20 40 80 km

Datum GDA 94, Geographic Coordinate system

Data sources
ABARES 2017, Catchment Scale Land Use of Australia - Update September 2017,
PSMA 2018, Local Government Areas
MDBA 2018, Community regions,

Map produced by ABARES, Department of Agriculture and Water Resources, January 2019.

- Eligible community regions
- Nature conservation
- Other protected areas
- Minimal use
- Grazing native vegetation
- Production native forests
- Grazing modified pastures
- Plantation forests (commercial and other)
- Dryland cropping
- Dryland horticulture
- Irrigated pastures
- Irrigated cropping
- Irrigated horticulture
- Urban intensive uses
- Intensive animal and plant production
- Rural residential and farm infrastructure
- Mining and waste
- Water

Warren Map

Communities eligible for funding under the MDB Economic Development Program