

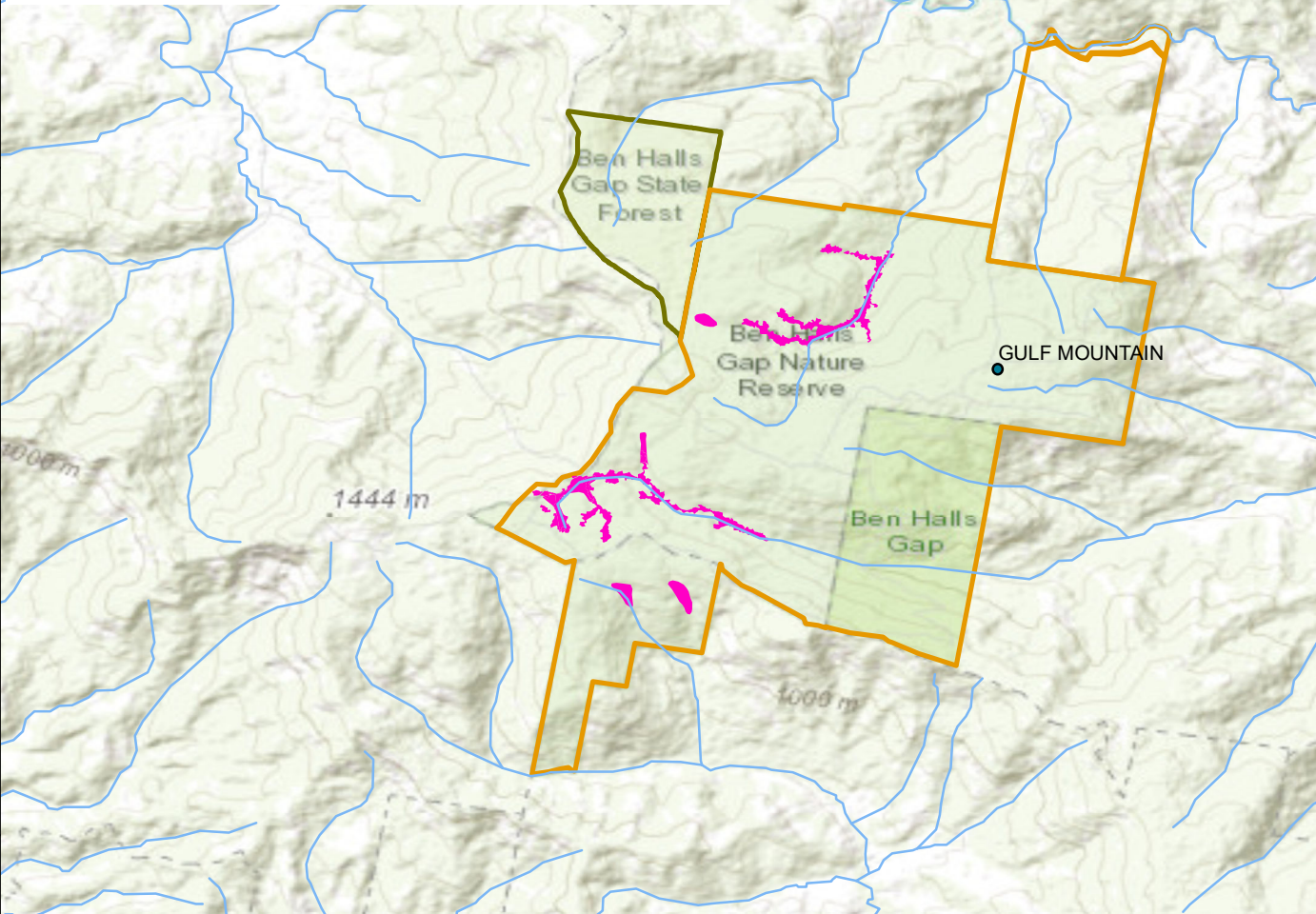
Ben Halls Gap Sphagnum Moss Cool Temperate Rainforest



Sphagnum cristatum hummock, © Doug Beckers



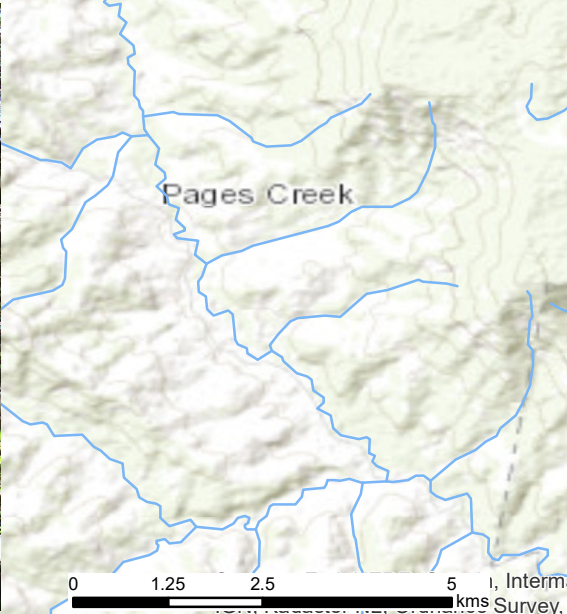
Ben Halls Gap Cool Temperate Rainforest, © Doug Beckers



Brayshaw's Creek, © Doug Beckers

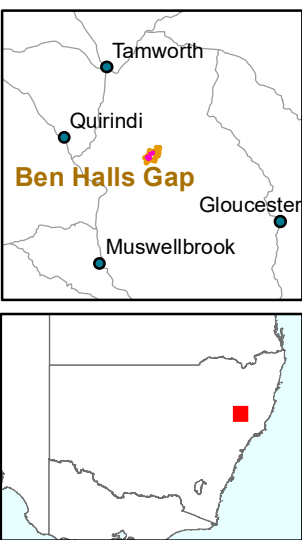


Canopy trees, © Doug Beckers



Sphagnum cristatum, © Doug Beckers

- Locality
- Drainage
- Ben Halls Gap Sphagnum Moss Cool Temperate Rainforest ecological community (indicative distribution based on mapped patches)
- Ben Halls Gap Nature Reserve and National Park
- Ben Halls Gap State Forest



Source: SVTM ENSW Extant PCT v1.1.0-Pre-release. The NSW State Vegetation Type Map (SVTM) provides a state wide snapshot of NSW Plant Community Types (PCTs) as developed or curated under the SVTM program. © State Government of NSW and Department of Planning, Industry and Environment 2020 Vegetation Community Mapping for Ben Halls Gap National Park by John Benson and Debbie Andrew, 1990. VIS\_ID 90

Localities, 1:250,000 © Commonwealth of Australia, Geoscience Australia, 2006. CAPAD (Collaborative Australian Protected Areas Database) 1:250,000, Data contributed by State/Territory nature and conservation agencies, DoEE, 2018. Drainage 1:250,000, © Commonwealth of Australia (Geoscience Australia), 2006. Coastline and State Borders, 1:250,000 © Commonwealth of Australia, Geoscience Australia, 2006.

Caveat: The information presented in this map has been provided by a range of groups and agencies. While every effort has been made to ensure accuracy and completeness, no guarantee is given, nor responsibility taken by the Commonwealth for errors or omissions, and the Commonwealth does not accept responsibility in respect of any information or advice given in relation to, or as a consequence of, anything containing herein. The map has been collated from a range of sources, with data at various resolutions. Data used are assumed to be correct as received from the data suppliers.

Produced by: Department Agriculture, Water and the Environment  
Australian Government.  
Date mapped: October 2021  
© Commonwealth of Australia, 2021.



Projection: Geographic  
Datum: GDA 94  
1:100,000