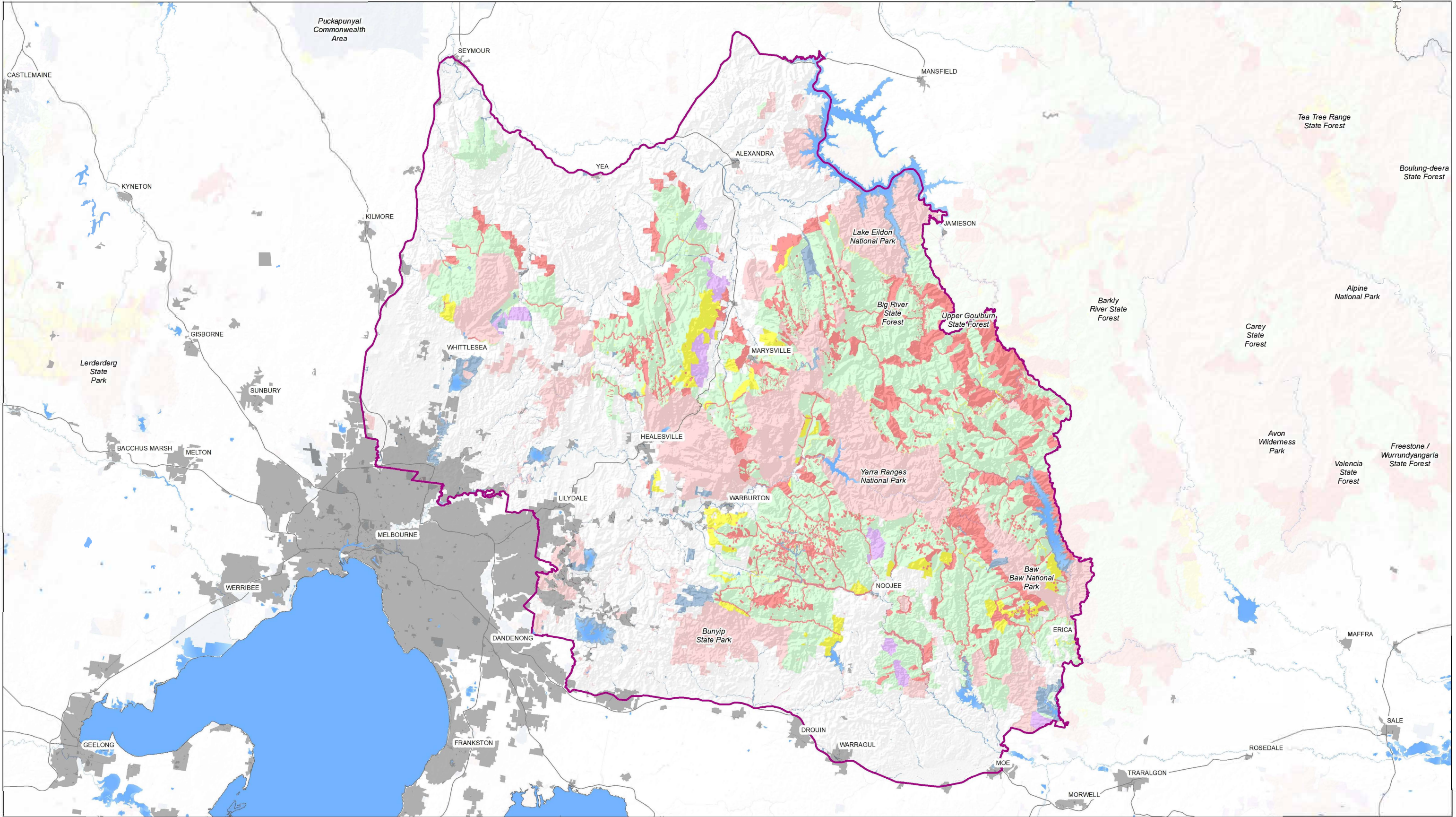


Regional Forest Agreement – CENTRAL HIGHLANDS – Updated Map*



Date: Current as at 31 March 2020

Disclaimer

This publication may be of assistance to you but the State of Victoria and its employees do not guarantee the publication is without flaw of any kind or is wholly appropriate for your particular purpose and therefore disclaims all liability for any error, loss or other consequence which may arise from you relying on any information in this publication. This map does not purport to provide an accurate representation of the boundaries of areas reserved or otherwise established under legislation. Reference should be made to relevant plans held in the Central Plans Office for detailed information regarding the boundaries of these areas.

Accessibility

If you would like to receive this publication in an accessible format such as large print or black and white please telephone 136 186, or email customer.service@delwp.vic.gov.au. Deaf, hearing impaired or speech impaired? Call us via the National Relay Service on 133 677 or visit www.relayservice.com.au

Legend

-
- RFA Region Boundary

CAR Reserve System[^]

- Dedicated Reserve**

National Pa

-  Special Protection Zone

Other Land Tenure and Zoning

State Forest

-  Special Management Zone
 General Management Zone
 Other Public Land
 Plantations

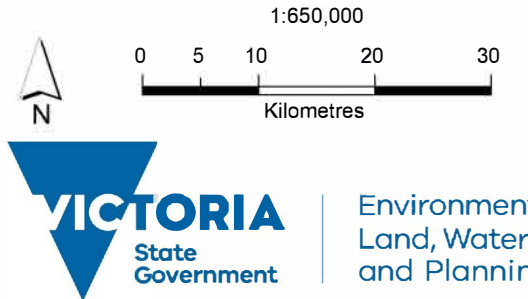
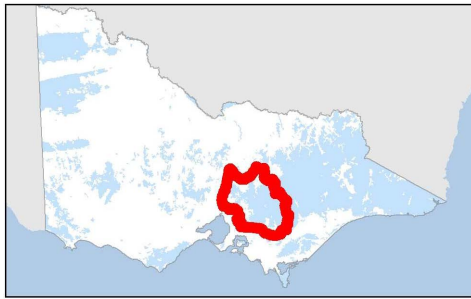
Other Land Features

- Rivers
— Roads
■ Built-Up-Areas
■ Major Water Bodies

Note:

* Updated map showing extent of the CAR Reserve System within Dedicated Reserves and Informal Reserves as at 31 March 2020 produced pursuant to clause 62(c) of the Central Highlands Regional Forest Agreement

^aSome values protected by prescription are not shown on this map but are components of the CAR Reserve System. This includes modelled values that are subject to field verification.



Environment,
Land, Water
and Planning