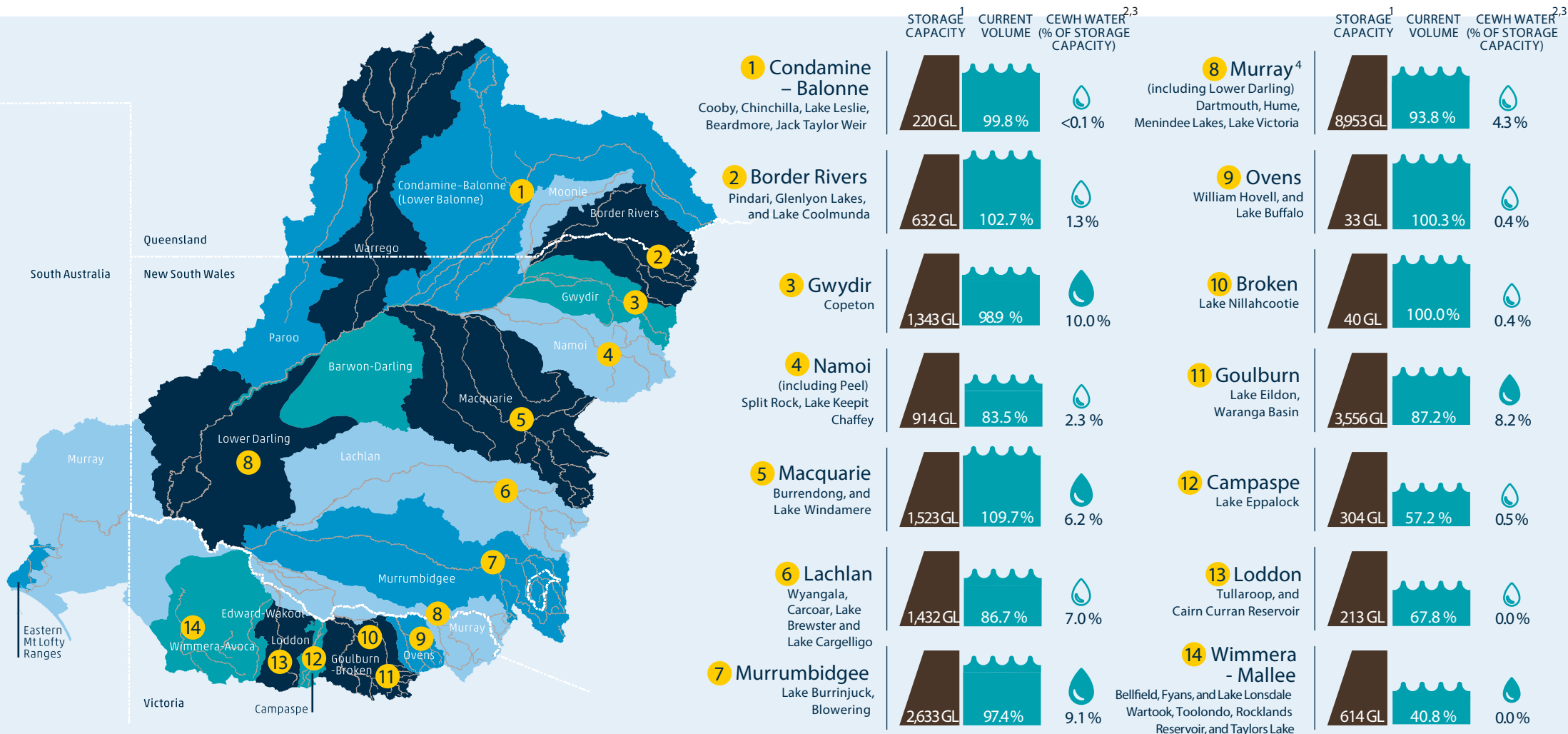


# Commonwealth environmental water in Basin storages (as at 30 November 2021)

Commonwealth environmental water is held in storages across the Basin. The Commonwealth's environmental water entitlements receive the same allocations and follow the same rules regarding carryover and trade as all other equivalent water licence holders in those systems.



<sup>1</sup> The storage capacity and current volumes provided in this chart exclude dead storage. Storage data sourced from the Bureau of Meteorology website at <http://water.bom.gov.au/waterstorage/awris/?ref=fr#urn:bom.gov.au:awris:common:odelist:region:drainage:division:murraydarling> and <http://water.bom.gov.au/waterstorage/awris/?ref=fr#urn:bom.gov.au:awris:common:odelist:feature:rocklands>

<sup>2</sup> The CEWH Water volume reflects the Commonwealth's current water account balances. It does not include allocation that has already been delivered or that has been transferred to delivery partners for delivery.

<sup>3</sup> Detailed information on the current Commonwealth Environmental Water Holding in each catchment, including carryover and allocations, can be found at <http://www.environment.gov.au/water/cewo/about/water-holdings>

<sup>4</sup> CEWH Water includes NSW and Vic Murray accounts, and excludes SA Murray accounts. Allocation held against the Commonwealth's SA Murray entitlement forms part of the 1,154 GL of SA entitlement flow managed in accordance with Part XII, Subdivision B of the Murray-Darling Basin Agreement. The entitlement flow is managed by the MDBA through a combination of unregulated tributary inflows and releases from upstream NSW and Victorian storages.