

DHL SUPPLY CHAIN PRODUCT STEWARDSHIP ARRANGEMENT 2013-2014 ANNUAL REPORT



ANNUAL REPORT 2013-14

DHL Supply Chain (Australia) Pty Limited

Television and Computer Product Stewardship Arrangement

Rhodes Corporate Park,
Level 3, Building A, 1 Homebush Bay Drive,
Rhodes, NSW 2138 Australia
Mail: PO Box 3175, Rhodes NSW 2138 Australia
Email: dropzone@dhl.com



CONTENTS

FOREWORD	4
DHL'S PRODUCT STEWARDSHIP ARRANGEMENT	7
MEMBERSHIP	10
DHL PREMIUM PARTNERS	12
COLLECTIONS	13
COMMUNICATIONS	16
RECYCLING	19
EXPORTED WHOLE UNITS	22
ENVIRONMENTAL AND OCCUPATIONAL HEALTH & SAFETY LAWS	22
APPENDICES	23
APPENDIX 1: DHL LIABLE PARTY MEMBERS	24
APPENDIX 2: COLLECTION SERVICES	25
APPENDIX 3: SUMMARY OF PRODUCT WEIGHT COLLECTED BY STATE AND REGION	41
APPENDIX 4: SUMMARY OF PRODUCT WEIGHT COLLECTED BY STATE AND REGION	45

FOREWORD

As we conclude the second year of the National Television and Computer Recycling Scheme, it is with sincere gratitude that I thank all individuals involved in contributing to the success of DHL Supply Chain's Product Stewardship Program.

Over the 2013-14 financial year, DHL collected and recycled 14,874 tonnes of Television and Computer waste. Combined with our first year figures this signifies a collection of more than 38,000 tonnes of electronic waste diverted from landfill in just 24 months.

But we would not have accomplished such an aggressive target without the support of our partners and the Australian community.

When we set out on this journey in 2012 in response to the Australian Government's Product Stewardship Legislation, we were committed to making every effort to achieve the Scheme's objectives. We are extremely excited to confirm that we've done just that.

The Australian Government acknowledged earlier this year that DHL was the first organisation to successfully meet all criteria of the program. We are proud to continue our journey maintaining our position as the market leaders in achieving all reported metrics. These include: e-waste Collection Targets, a Material Recovery target and Reasonable Access target.

DHL has set up 582 Drop Zone collection locations across the country. These sites have allowed 97% of the Australian population to easily dispose of their unwanted Televisions and Computers. Under DHL's program, 96% of the material recycled has been recovered and used in the production of new products.

However, our work is not done. With e-waste growing three times faster than any other type of waste in Australia, we are just getting started. Our goal is to increase the recycling rate of Televisions, Computers and Computer equipment such as printers, keyboards and mice to 80% in 2021-22.

We are excited to present to you our 2013-14 success.



A handwritten signature in black ink, appearing to read 'T. Ryan'.

Terry Ryan
CEO

Australia, New Zealand, Japan,
S.Korea & Life Science Healthcare APAC

"When we set out on this journey in 2012 in response to the Australian Government's product stewardship legislations, we were committed to making every effort to achieve the scheme's objectives. We are extremely pleased to confirm that we've done just that."

2013-14 ACHIEVEMENTS

Collection



Managed 213 permanent collection sites across Australia



Supported 582 permanent sites, events and retailers to collect e-waste



Provided reasonable access to 22,441,222 Australians

...making it easy for every person in Australia to do the responsible thing

Recycling



We recycled 14,874 tonnes of e-waste



With an average of 96% recovery rate



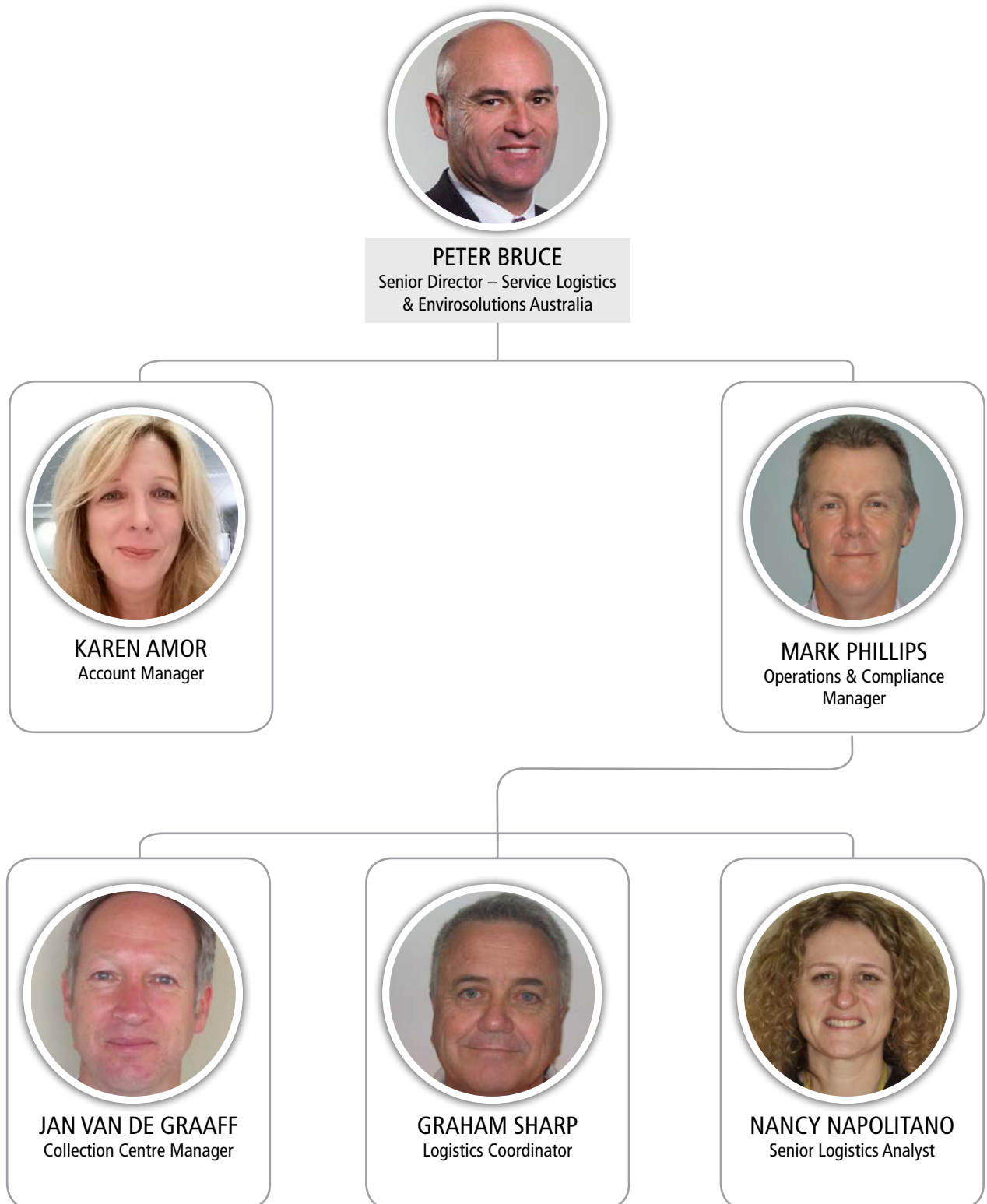
Utilising services from 21 recycling partners

...providing assurance to our liable partners and sustainable outcomes for our planet



supporting 14 social enterprise employers...
more than 100 people employed.

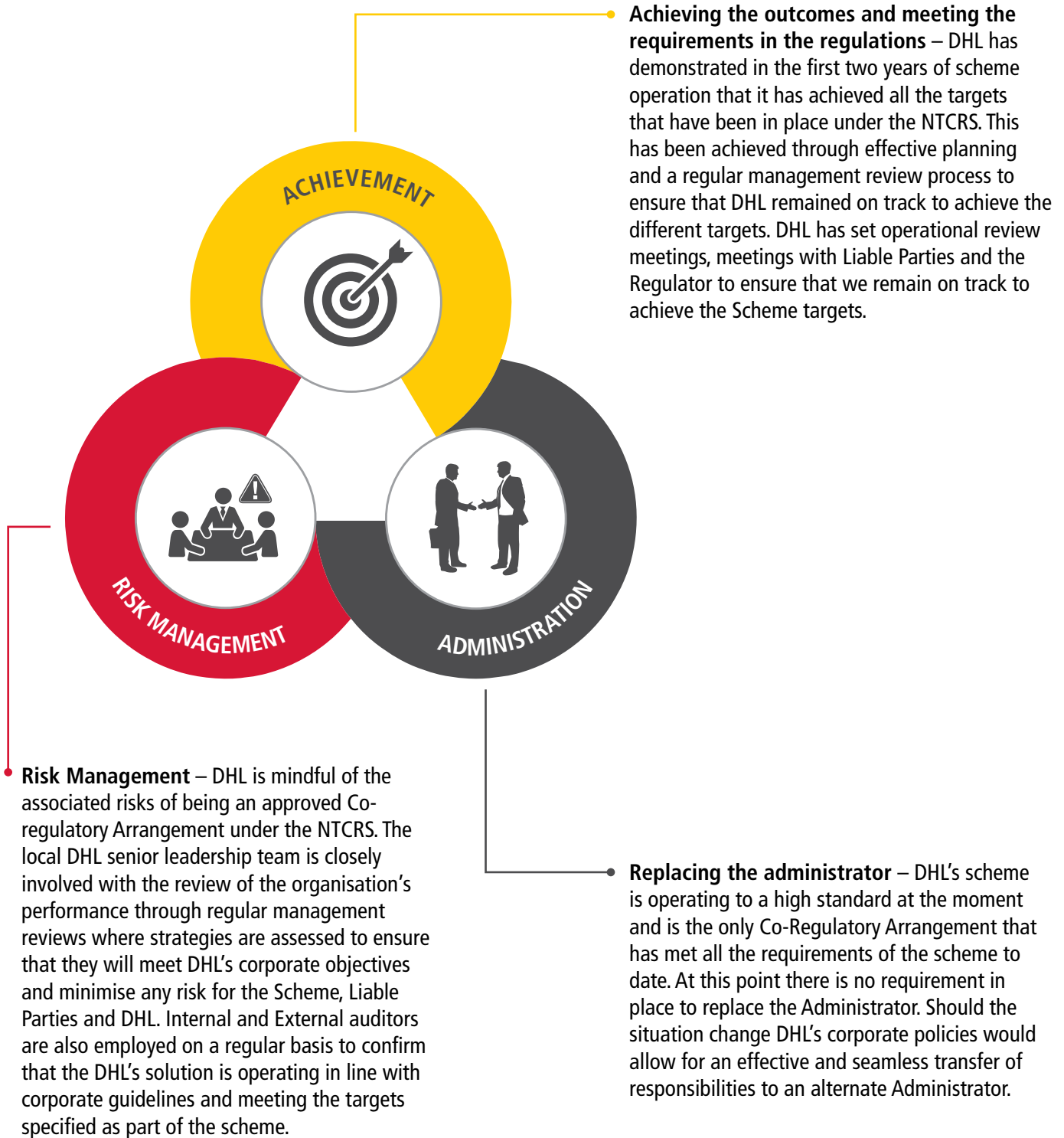
ORGANISATIONAL CHART



DHL SUPPLY CHAIN PRODUCT STEWARDSHIP ARRANGEMENT



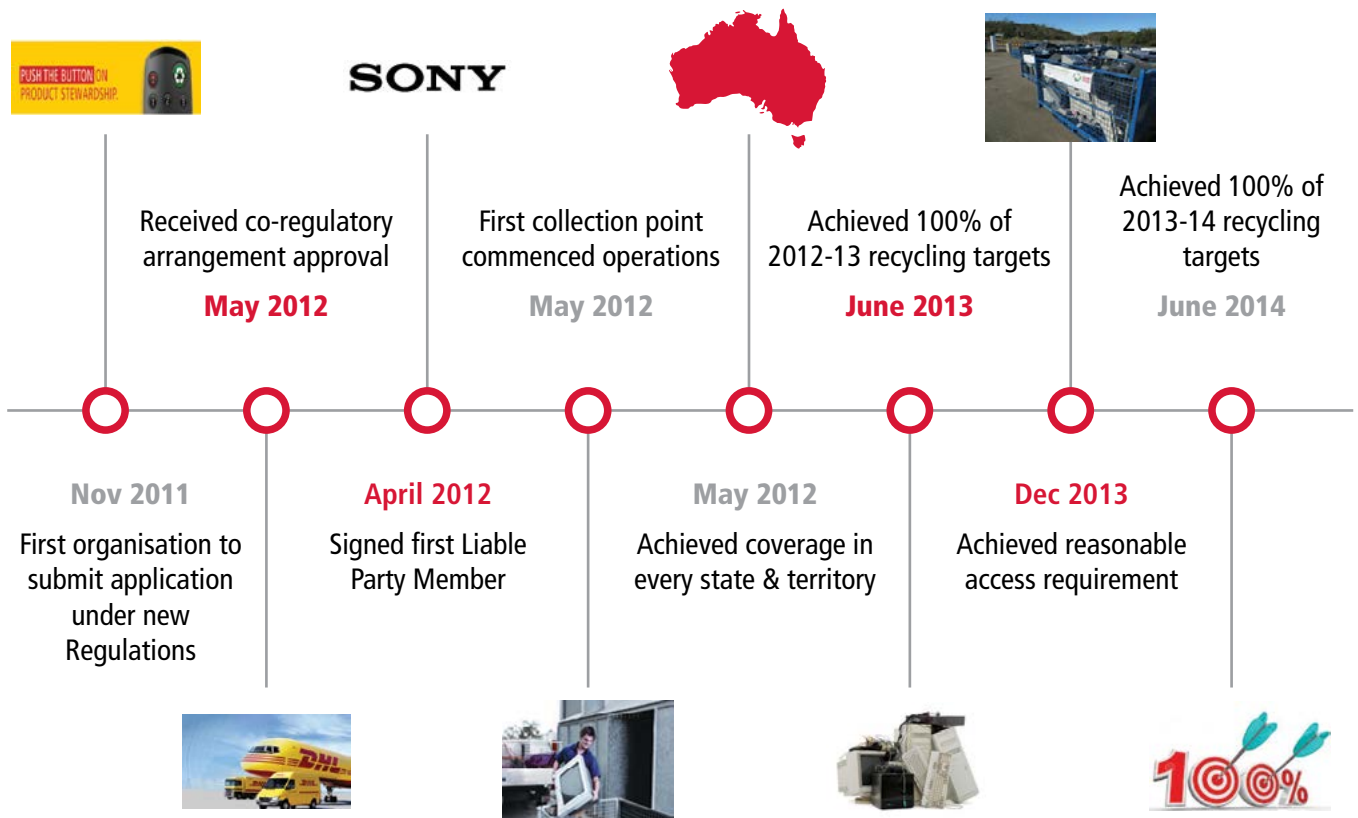
GOVERNANCE SYSTEMS



On 2 March 2012, DHL Supply Chain was the first organisation approved to facilitate activities associated with the collection and recycling of end-of-life television and computer products under the Australian Government's National Television and Computer Recycling Scheme.

DHL achieved many milestones in its first year of operation as an Approved Co-Regulatory Arrangement and that journey of success has continued into Year two of the Scheme. Some of DHL's achievements to date include:

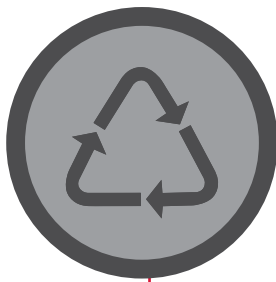
DHL PRODUCT STEWARDSHIP MILESTONES



BEING SOCIALLY RESPONSIBLE



DHL's focus in the second year of the scheme has been to maintain and nurture our relationships with all stakeholders in the Product Stewardship chain.



DHL has worked hard to ensure that householders and small businesses are aware of and have access to the FREE recycling drop-off points, commonly known as Drop Zones, across all states and territories.



On 8 July 2014, the Australian Government Department of the Environment announced that DHL Supply Chain had met its requirement to provide reasonable access to collections services for communities in metropolitan, regional and remote Australia by 31 December 2013.

MEMBERSHIP



MEMBERSHIP

DHL has continued to engage with the customer Steering Committee. DHL's Liable Parties are active participants in defining the overall strategic direction of the Co-Regulatory Arrangement. In 2013-14, the Committee undertook a variety of activities including:

Strategy



Review and provide suggestions for key elements of:

- Collection Strategy
- Demand Management Strategy
- Strategy to win and retain credible liable parties

Engagement



Highlight issues to be raised with the Government's NTCRS Regulator

Improvement



Comprehensive review and submission to the Government regarding the product conversation factors in Schedule 1B of the Regulations

In early 2014, DHL hosted an information session for its members and other interested Liable Parties to discuss the Scheme's progress.

Guest speakers included representatives from the Department of the Environment, Samsung Electronics Australia and a video presentation from Ian Abbott, Mayor of the City of Palmerston.

DHL intends to continue to host such events annually.

DHL PREMIUM PARTNERS



"Avnet are pleased to partner with DHL and partake in the Product Stewardship program. The strategies, reporting and results associated with this program allow Avnet to align our global responsibilities in reducing landfill waste and our corporate responsibility is important to us here at Avnet. DHL provide the necessary focus and direction while we work together to reach these goals."

STEVE BENTLEY
Operations Director
Computing Components Division



"Working with DHL Supply Chain on the Product Stewardship for the National Television and Computer Recycling Scheme allows us to help the environment while achieving all of the requirements of the scheme. DHL is a professional partner, which works with Kogan to help divert e-waste from landfill, ultimately creating a better environment."

DAVID SHAFER
Executive Director

kogan.com

COLLECTIONS



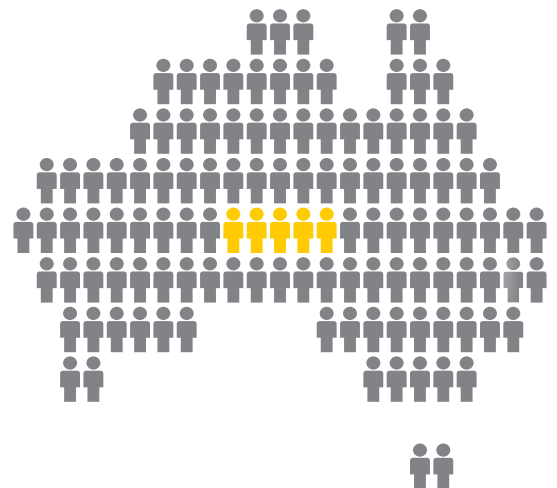
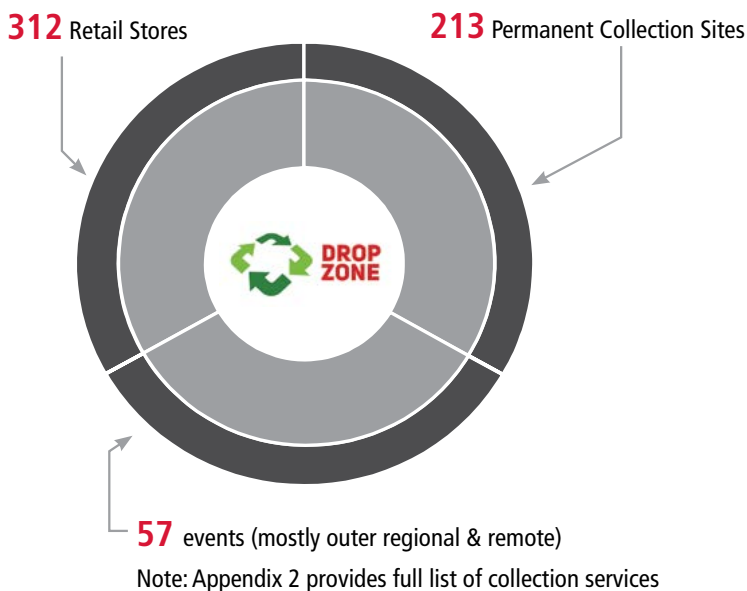
COLLECTIONS

DHL's collection strategy continues to involve a combination of **582 permanent sites, events, and retailers** in metropolitan, inner regional, outer regional and remote areas across Australia.

DHL's primary focus for collection services is permanent sites which are associated with council waste transfer stations. The rationale for this was based on householder and small business familiarity with disposing of waste at these sites.

DHL surmised that it would be beneficial to tap into existing council communication channels to encourage the community to take televisions and computers to the same facilities.

As at 31 December 2013, DHL had met its requirement to provide reasonable access to collection services to communities across Australia. DHL's solution services 22,441,222* million Australians, or 97% of the population. Appendix 3 provides a summary of the total weight of product collected by state and region.



DHL's solution services
22,441,222*
 million Australians

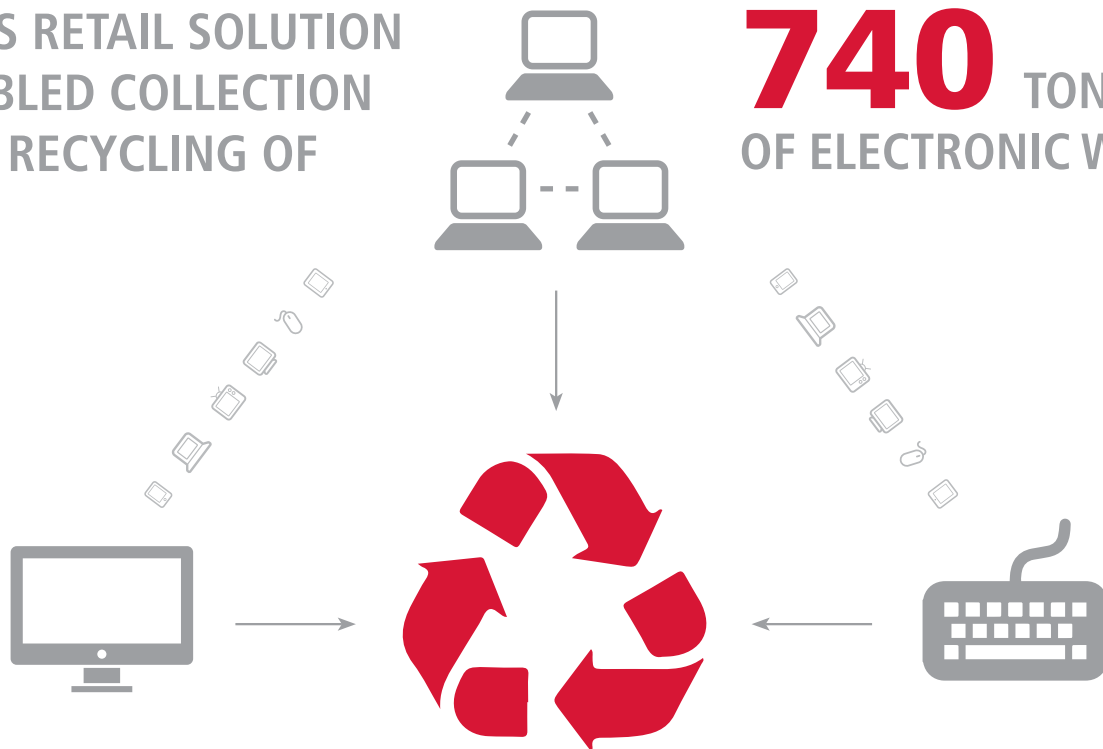
97%
 of the population

* <http://www.abs.gov.au/ausstats> as at 30th June 2013

RETAIL COLLECTIONS

DHL'S RETAIL SOLUTION
ENABLED COLLECTION
AND RECYCLING OF

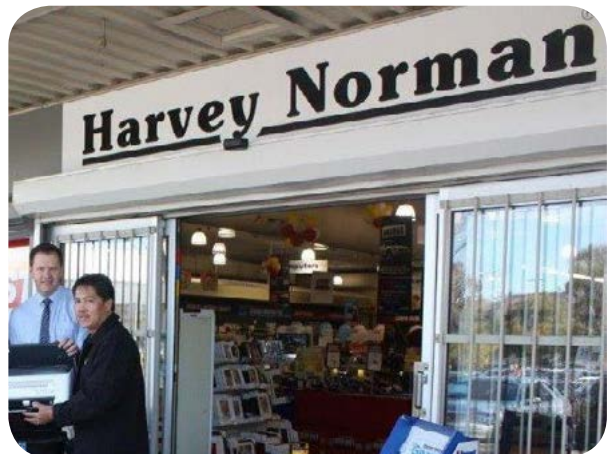
740 TONNES
OF ELECTRONIC WASTE.



Officeworks provided a collection network for computers, printers and computer related products such as hard drives, keyboard and mice.



Harvey Norman collection sites at selected electrical stores provided a solution for televisions.



COMMUNICATIONS

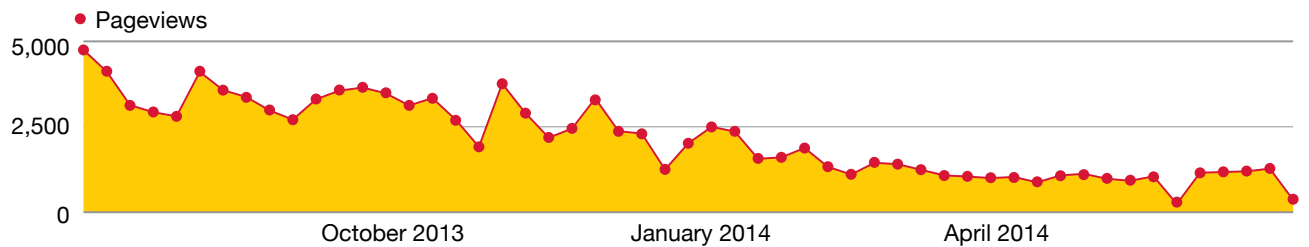


DROP ZONE

To ensure public awareness of DHL's free drop-off points, the customer facing website dropzone.org.au provides information about the scheme, FAQ's and a list of collection sites. It also provides a forum to submit questions to DHL. In 2013-14, 83 queries were logged and responded to via the website.



DROP ZONE WEBSITE VISITOR STATISTICS



Sessions
36,618

users
30,575

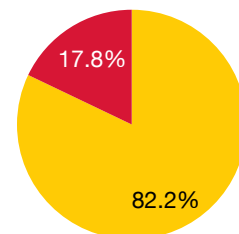
Pageviews
115,263

Pages/Session
3.15

Avg. Session Duration
00:01:58

Bounce Rate
35.75%

% New Sessions
82.13%



■ New Visitor ■ Returning Visitor

ADVERTISING

DHL undertook several small advertising campaigns in conjunction with local councils and organisations hosting collection events.

These advertisements appeared in local papers and on notice boards in regional communities such as Broken Hill, Weipa, Balonne Shire and Tom Price.



**Don't dump it,
drop it for FREE.**

FREE SERVICE

Recycle TVs and Computers for FREE

Now you can take your unwanted televisions and computers to a FREE Drop Zone recycling service near you. So help reduce landfill and make the drop.

For full details of products accepted, visit dropzone.org.au

SEVEN DAYS ONLY

**Make the drop
for FREE at
this location:**

Broken Hill Waste Management Facility
Wills Street, Broken Hill
Monday 26th August - Sunday 1st September,
7am - 6pm

BROKEN HILL CITY COUNCIL

DROP ZONE

For more information visit dropzone.org.au

RECYCLING



RECYCLING

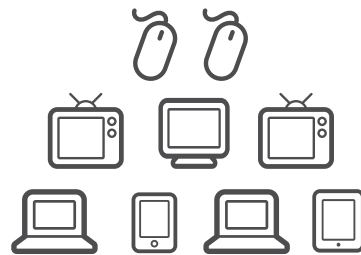
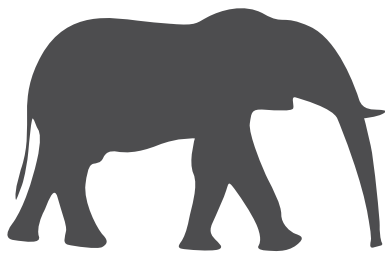
DHL Recyclers processed a total of 14,874 tonnes of televisions, computers and computer related product on behalf of DHL during 2013-14. No product was stockpiled or stored outside of a recycling facility during the 2013-14 year.

To ensure compliance with all relevant Australian Standards, International Standards and industry Codes of Practice, DHL employed an auditor certified to Integrated Management Systems encompassing ISO 9001, ISO 14001 & OHSAS 18001. DHL's Recycling Manager conducted 32 audits during the 2013-14 reporting period and developed improvement plans in conjunction with Recyclers to enable and encourage a continuous improvement environment.

Each of DHL's Recyclers has a measurable landfill diversion rate. From 1 July 2014, the Regulations will require Co-Regulatory Arrangements to report on material recovery rates. During the 2013-14 year DHL was involved in an industry consultation regarding the material recovery measurement and reporting methodology.

Whilst the industry awaited guidance on a consistent methodology for recording and reporting landfill diversion, all of DHL's Recyclers, on average and by their own measure, are achieving an approximate 96% recovery rate.

DHL have worked with Recyclers to ensure that best practice methods for handling e-waste are implemented across the country delivering a positive social and environmental outcome for the community.



5,476
AFRICAN ELEPHANTS

14.8 MILLION KGS
OF E-WASTE

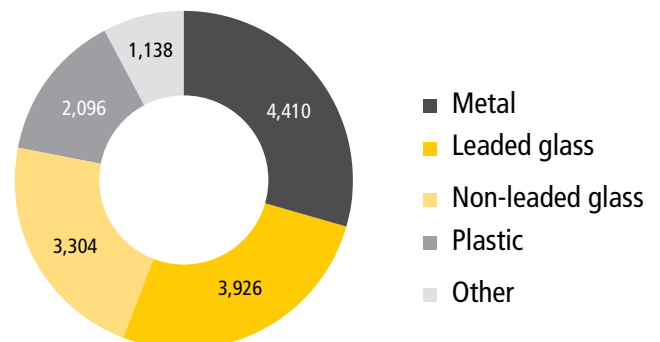
DHL's product stewardship program facilitated the collection and recycling of more than 14.8 Million kgs of e-waste, diverting the equivalent weight of 5476 african elephants from landfill.

MATERIALS OVERVIEW

Breakdown for processed e-Waste (tonnes)

Useable Material (local)	11,685
Exported Material	2,658
Local Disposal	531
Total	14,874

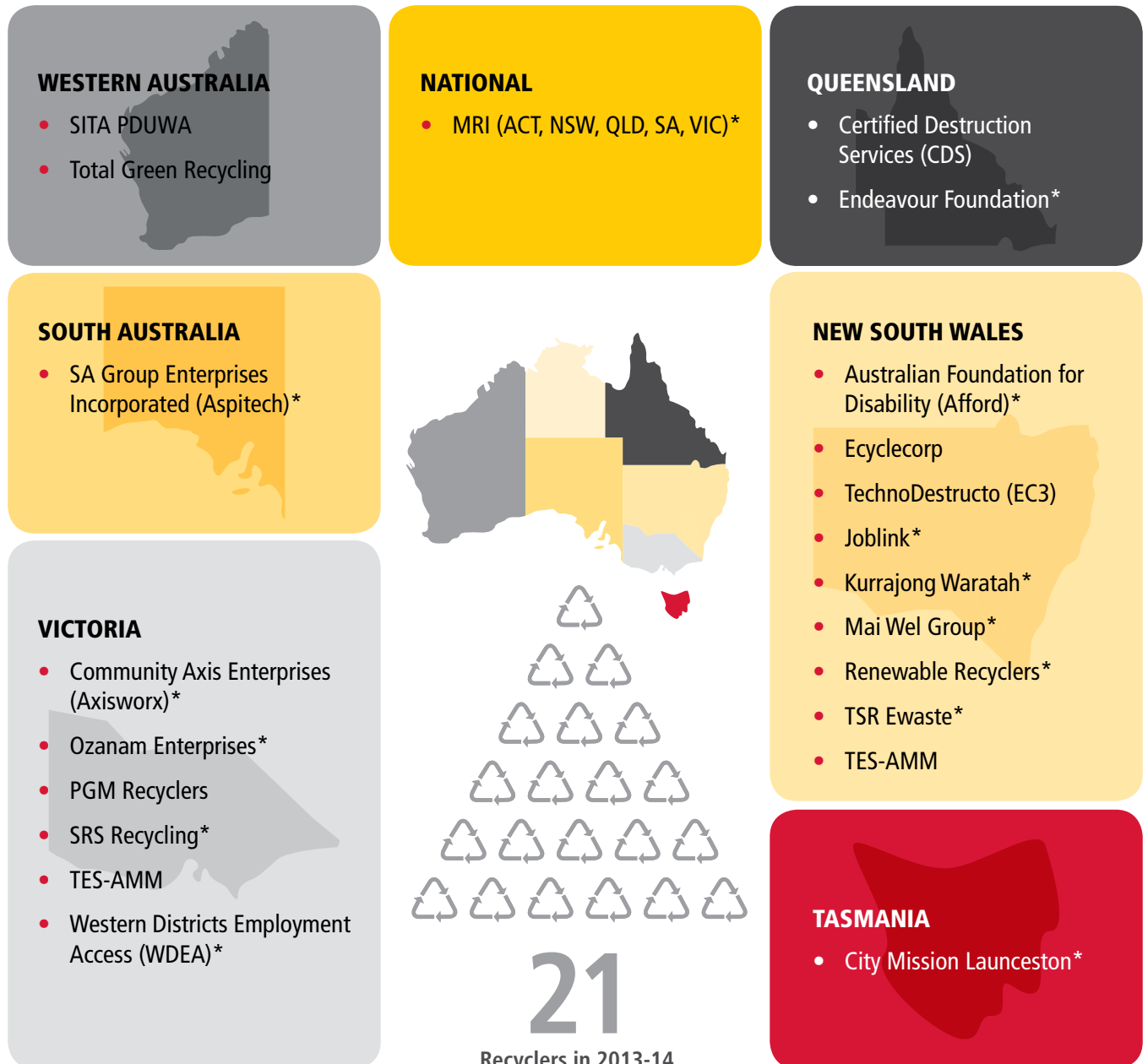
Total materials recovered (tonnes)



DHL RECYCLERS

DHL's co-regulatory arrangement engaged 21 recyclers in 2013-14. Fourteen of these recyclers worked in conjunction with social enterprise firms, providing job opportunities for people with disabilities and long term unemployment.

All recyclers utilising the disability workforce comply with the relevant state and territory legislation, as well as the federal laws.



* Indicates support of Social Enterprise

EXPORTED WHOLE UNITS

Under DHL's Co-Regulatory Arrangement there were no whole units of televisions, computers or computer product exported overseas for recycling or re-use.

DHL's selected recyclers all have varying downstream processes which may see components exported overseas for further processing. These recyclers and their downstream processes have been audited in accordance with the NTCRS.

ENVIRONMENTAL & OCCUPATIONAL HEALTH & SAFETY COMPLIANCE

ENVIRONMENTAL AND OCCUPATIONAL HEALTH & SAFETY LAWS

Supporting DHL's commitment to Employee Safety and our corporate goal to be the most Environmentally Friendly Logistics Company in the world, the operation of Recyclers providing a recycling service to DHL is one that achieves our full focus and attention.

To support our broader goals, DHL works closely with Recyclers to review and identify areas of opportunity in the Employee Health and Safety and Environmental Management areas.

Through the review and reporting process a number of issues were identified during the 2013/14 financial year and all individual issues were reviewed by DHL's Recycling Manager with the respective Recyclers involved. Occupational Health and Safety Incidents reported were 6 and Environmental Incidents were 3 for the period.

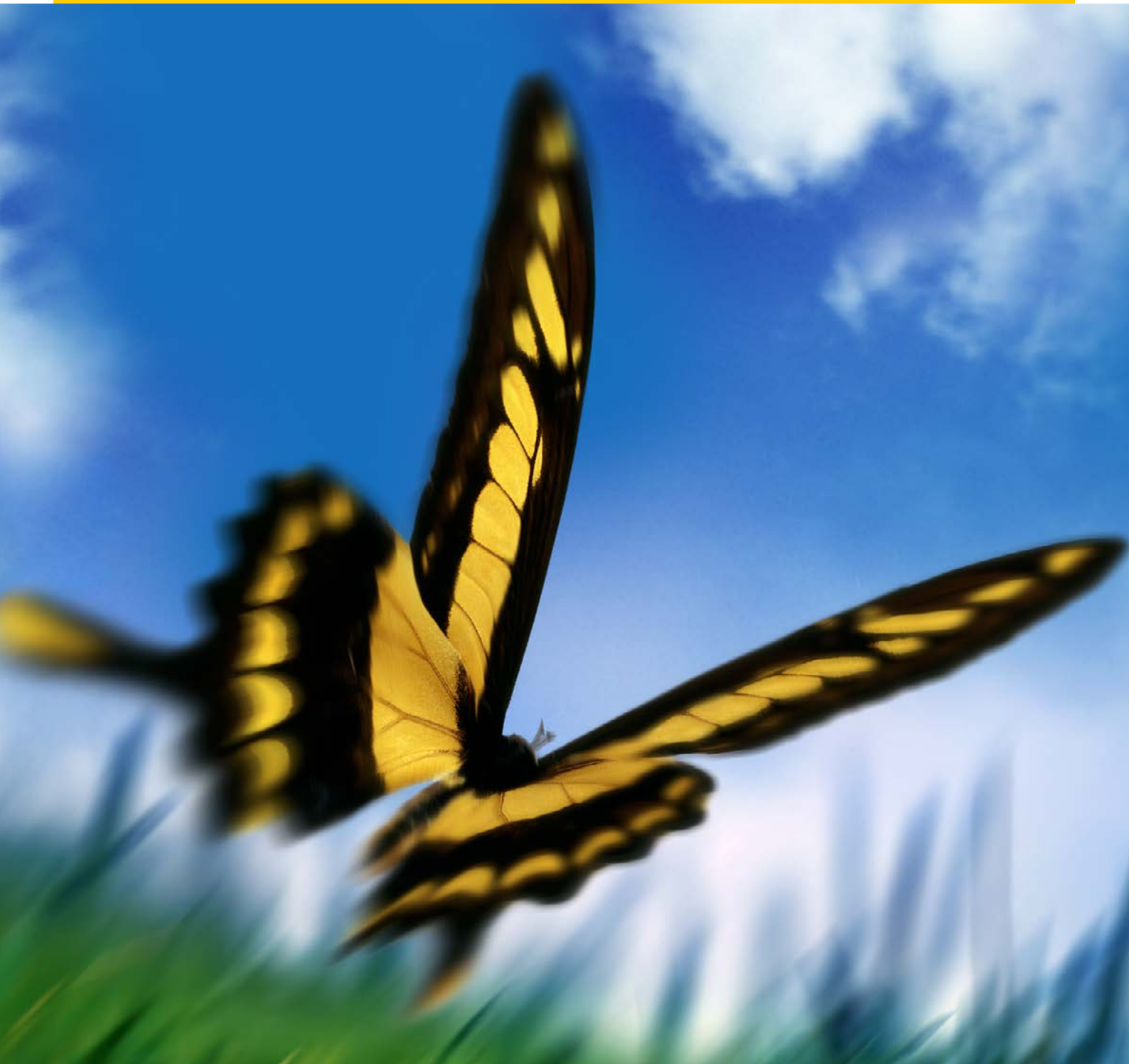
Fortunately a relatively small number of issues were identified and DHL is happy to report that no major injuries were reported although the ultimate aim is that zero Employee Health and Safety and Environmental incidents will occur on an annual basis.

It is important to note that not all issues that were reported related directly to the operation of the Recyclers but may have involved third parties entering the different Recycling sites.

Under the reporting requirements Recyclers and DHL still need to record and review any incidents and to take appropriate actions to avoid future occurrences of similar incidents. So while some of the reported issues may be outside of the Recycler's immediate control they still had to be reported.

The incidents reported may also not have occurred while processing only DHL supplied e-Waste. The reporting requirements mean that incidents have to be reported for the Recycler and these may have occurred while providing an e-Waste processing service for other Co Regulatory Arrangements or commercial customers.

APPENDIX 1-4



APPENDIX 1:

DHL LIABLE PARTY MEMBERS

MEMBER NAME	MEMBER ACN	DATE JOINED	DATE CEASED
A ROYALE & CO (AUST) PTY LTD	002 428 382	01/07/13	30/06/14
ACCO AUSTRALIA PTY LIMITED	000 265 047	01/04/12	
ADVANTECH AUSTRALIA PTY LIMITED	002 593 277	01/04/12	
ANABELLE BITS PTY LTD	068 649 972	01/04/12	30/06/14
AUDION INNOVISION PTY. LTD.	119 042 527	01/07/12	
AUSTRALIA I.T. PTY. LTD.	088 274 195	01/07/12	
AVNET (AUSTRALIA) PTY. LTD.	090 111 890	01/04/12	
AVNET PACIFIC PTY LIMITED	003 085 050	01/04/12	30/06/14
AVNET TECHNOLOGY SOLUTIONS (AUSTRALIA) LIMITED	107 656 833	01/04/12	
BCI INTERNATIONAL DEVELOPMENT PTY. LTD.	063 589 935	01/04/12	30/06/14
BELKIN LIMITED	095 402 663	01/04/12	
BRIGHTPOINT AUSTRALIA PTY LTD	075 244 870	01/07/13	30/06/14
BUSH AUSTRALIA PTY. LIMITED	109 953 335	01/04/12	
CELLNET GROUP LIMITED	010 721 749	01/07/13	
DICK SMITH (WHOLESALE) PTY LTD	000 445 956	01/07/12	
DIGIPOS STORE SOLUTIONS	086 333 691	01/07/13	02/12/13
ELECTUS DISTRIBUTION PTY. LIMITED	000 087 347	01/04/12	
ELEMENT14 PTY LTD	003 211 345	01/07/12	
FUJITSU AUSTRALIA LTD	001 011 427	01/04/12	
IMATION ANZ PTY LTD	074 027 919	01/04/12	
INGRAM MICRO PTY LTD	112 487 966	01/04/12	
INTERMEC TECHNOLOGIES AUSTRALIA PTY LTD	003 365 599	01/07/12	
KMART AUSTRALIA LIMITED	004 700 485	01/07/12	
KOGAN AUSTRALIA PTY LTD	152 570 351	01/07/12	
LG ELECTRONICS AUSTRALIA PTY LIMITED	064 531 264	01/04/12	
MOTOROLA SOLUTIONS AUSTRALIA PTY. LIMITED	004 742 312	01/04/12	30/06/14
PENDO INDUSTRIES PTY LTD	137 825 015	01/04/12	
POS – P.O.S. PTY. LTD.	072 799 592	01/04/12	
SAMSUNG ELECTRONICS AUSTRALIA PTY LTD	002 915 648	01/04/12	
SONY AUSTRALIA LIMITED	001 215 354	01/04/12	
TARGET AUSTRALIA PTY. LTD.	004 250 944	01/07/12	
TEAC AUSTRALIA PTY LTD	110 475 799	01/07/12	
TECO AUSTRALIA PTY LTD	002 595 388	01/04/12	
TEMPO (AUST) PTY LTD	106 100 252	01/07/12	
THE TRUSTEE FOR SYSTERMAX TRUST	639 872 096	01/04/12	30/06/14
VERBATIM AUSTRALIA PTY. LTD.	005 706 374	01/04/12	
WOOLWORTHS LTD	000 014 675	01/07/12	

APPENDIX 2:

COLLECTION SERVICES

STATE	COLLECTION TYPE	SERVICE NAME
ACT	Retailer	Domayne Fyshwick
	Retailer	Harvey Norman Fyshwick
	Collection Station	Mitchell Resource Management Centre
	Collection Station	Mugga Lane Resource Management Centre
	Retailer	Officeworks Belconnen
	Retailer	Officeworks Tuggeranong
NSW	Collection Station	Awaba Waste Management Facility
	Collection Station	Ballina Waste Transfer Station
	Collection Station	Bendalong Recycling and Waste Transfer Depot
	Collection Station	Berry Recycling and Waste Transfer Depot
	Collection Station	Bland Shire Council Landfill
	Event	Bogan Shire Council Waste Management Facility
	Collection Station	Bombala Waste Deopt
	Collection Station	Boorowa Garbage Depot
	Collection Station	Breeza Rural Waste Depot
	Event	Brewarrina Shire Council Waste Management Facility
	Event	Broken Hill – event
	Collection Station	Bungendore Tip
	Collection Station	Callala Recycling and Waste Transfer Depot
	Collection Station	Carroll Rural Waste Depot
	Collection Station	Cessnock Waste and Reuse Centre
	Collection Station	Coolamon Shire Council Landfill
	Event	Cooma Monaro Shire Council
	Collection Station	Cootamundra Waste Disposal Centre
	Collection Station	Corowa Shire Council Landfill Facility
	Collection Station	Curlewis Rural Waste Depot
	Retailer	Domanye North Ryde
	Retailer	Domayne Alexandria
	Retailer	Domayne Belrose
	Retailer	Domayne Kotara
	Retailer	Domayne Warrawong
	Retailer	Domayne West Gosford
	Event	Doyalson RSL (Lower Carpark)
	Collection Station	Dungog Waste Disposal Depot
	Event	Glen Innes Waste Management Facility
	Collection Station	Glenfield Waste Services
	Collection Station	Goulburn Transfer Station

APPENDIX 2:

COLLECTION SERVICES

STATE	COLLECTION TYPE	SERVICE NAME
NSW	Collection Station	Greater Hume Shire Council Landfill
	Collection Station	Gregadoo Waste Management Centre
	Collection Station	Gundagai Waste And Recovery Centre
	Collection Station	Gunnedah Waste Management Facility
	Collection Station	Harden Murrumburrah Transfer Station
	Retailer	Harvey Norman Albury
	Retailer	Harvey Norman Alexandria
	Retailer	Harvey Norman Armidale
	Retailer	Harvey Norman Auburn
	Retailer	Harvey Norman Balgowlah
	Retailer	Harvey Norman Ballina
	Retailer	Harvey Norman Bennett's Green
	Retailer	Harvey Norman Bondi Junction
	Retailer	Harvey Norman Broadway
	Retailer	Harvey Norman Broken Hill
	Retailer	Harvey Norman Campbelltown
	Retailer	Harvey Norman Castle Hill
	Retailer	Harvey Norman Cobar
	Retailer	Harvey Norman Coffs Harbour
	Retailer	Harvey Norman Deniliquin
	Retailer	Harvey Norman Dubbo
	Retailer	Harvey Norman Erina
	Retailer	Harvey Norman Forster
	Retailer	Harvey Norman Gordon
	Retailer	Harvey Norman Goulburn
	Retailer	Harvey Norman Grafton
	Retailer	Harvey Norman Griffith
	Retailer	Harvey Norman Inverell
	Retailer	Harvey Norman Lake Haven
	Retailer	Harvey Norman Lismore
	Retailer	Harvey Norman Lithgow
	Retailer	Harvey Norman Liverpool
	Retailer	Harvey Norman Maitland
	Retailer	Harvey Norman Moore Park
	Retailer	Harvey Norman Moss Vale
	Retailer	Harvey Norman Mt Druitt
	Retailer	Harvey Norman Mudgee

APPENDIX 2:

COLLECTION SERVICES

STATE	COLLECTION TYPE	SERVICE NAME
NSW	Retailer	Harvey Norman Nowra
	Retailer	Harvey Norman Orange
	Retailer	Harvey Norman Parkes
	Retailer	Harvey Norman Penrith
	Retailer	Harvey Norman Port Macquarie
	Retailer	Harvey Norman Salamander
	Retailer	Harvey Norman Tamworth
	Retailer	Harvey Norman Taree
	Retailer	Harvey Norman Taren Point
	Retailer	Harvey Norman Temora
	Retailer	Harvey Norman Tura Beach
	Retailer	Harvey Norman Tweed Heads
	Retailer	Harvey Norman Warrawong
	Retailer	Harvey Norman West Wyalong
	Retailer	Harvey Norman Wiley Park
	Collection Station	Huskisson Recycling and Waste Depot
	Event	Jessey park
	Collection Station	Jindabyne Landfill
	Collection Station	Joblink (Tamworth)
	Retailer	Joyce Mayne Albury
	Retailer	Joyce Mayne Bennett's Green
	Retailer	Joyce Mayne Maitland
	Retailer	Joyce Mayne Nowra
	Retailer	Joyce Mayne Warrawong
	Collection Station	Junee Shire Council Transfer Station
	Collection Station	Kangaroo Valley Recycling and Waste Transfer Depot
	Collection Station	Kimbriki
	Collection Station	Kioloa Recycling and Waste Transfer Depot
	Collection Station	Kurrajong Recyclers Collection Point NSW
	Collection Station	Lake Conjola Recycling and Waste Transfer Depot
	Collection Station	Lockhart Shire Council Waste Depot
	Collection Station	Macs Reef Road Tip
	Event	Maitland City Council Drop off Event
	Event	Marrickville Council Works Depot
	Collection Station	Merimbula Waste & Recycling Depot
	Event	Mosman Council Carpark
	Collection Station	Mt Vincent Waste Disposal Site

APPENDIX 2:

COLLECTION SERVICES

STATE	COLLECTION TYPE	SERVICE NAME
NSW	Collection Station	Mullaley Transfer Station
	Collection Station	Muswellbrook Waste Management Facility
	Retailer	Officeworks Albury
	Retailer	Officeworks Alexandria
	Retailer	Officeworks Auburn
	Retailer	Officeworks Blacktown
	Retailer	Officeworks Bondi Junction
	Retailer	Officeworks Campbelltown
	Retailer	Officeworks Carlton
	Retailer	Officeworks Castle Hill
	Retailer	Officeworks Coffs Harbour
	Retailer	Officeworks Dee Why
	Retailer	Officeworks Dubbo
	Retailer	Officeworks Fairy Meadow
	Retailer	Officeworks Five Dock
	Retailer	Officeworks Glebe
	Retailer	Officeworks Greenacre
	Retailer	Officeworks Hornsby
	Retailer	Officeworks Hoxton Park
	Retailer	Officeworks Kotara
	Retailer	Officeworks Lewisham
	Retailer	Officeworks Lismore
	Retailer	Officeworks Liverpool
	Retailer	Officeworks Mona Vale
	Retailer	Officeworks Newcastle West
	Retailer	Officeworks North Ryde
	Retailer	Officeworks North Sydney
	Retailer	Officeworks Northmead
	Retailer	Officeworks Nowra
	Retailer	Officeworks Old Guildford
	Retailer	Officeworks Orange
	Retailer	Officeworks Penrith
	Retailer	Officeworks Punchbowl
	Retailer	Officeworks Rutherford
	Retailer	Officeworks Taree
	Retailer	Officeworks Taren Point
	Retailer	Officeworks Warners Bay

APPENDIX 2:

COLLECTION SERVICES

STATE	COLLECTION TYPE	SERVICE NAME
NSW	Retailer	Officeworks West Gosford
	Retailer	Officeworks Wetherill Park
	Event	Port Stephens Council Drop Off Day
	Event	Queanbeyan Showground
	Collection Station	Salamander Bay Waste Transfer Station
	Collection Station	Singleton Council Waste Depot
	Collection Station	SITA Auburn
	Collection Station	SITA Belrose
	Collection Station	SITA Chullora
	Collection Station	SITA Eastern Creek
	Collection Station	SITA Lucas Heights
	Collection Station	SITA North Ryde
	Collection Station	SITA Seven Hills
	Collection Station	SITA Spring Farm
	Collection Station	SITA Wetherill Park
	Collection Station	Summerhill Waste Management Centre
	Collection Station	Surf Beach Waste Management Facility
	Collection Station	Sussex Inlet Recycling and Waste Transfer Depot
	Collection Station	Tambar Springs Transfer Station
	Collection Station	Taren Point Transfer Station
	Collection Station	Temora Shire Council Landfill
	Collection Station	TSR E-Waste Collection Point NSW
	Collection Station	Tumbarumba Shire Council Waste Transfer Station
	Collection Station	Tumut Waste and Recycling Centre
	Collection Station	Ulladulla Recycling and Waste Depot
	Collection Station	Urana Shire Council Landfill
	Collection Station	Victoria St Waste Management Facility
	Collection Station	West Nowra Recycling and Waste Depot
	Collection Station	Whytes Gully Waste Transfer Station
	Collection Station	Yass Transfer Station
NT	Collection Station	Alice Springs Commonage Rd Landfill
	Retailer	Betta Home Living Katherine
	Retailer	Betta Home Living Tennant Creek
	Retailer	Harvey Norman Alice Springs
	Retailer	Harvey Norman Darwin
	Event	Katherine Waste Management Site
	Event	Maningrida Lot 468 (Outside MPA Store)

APPENDIX 2:

COLLECTION SERVICES

STATE	COLLECTION TYPE	SERVICE NAME
NT	Event	Nhulunbuy Corporation
	Retailer	Officeworks Stuart Park
	Event	Palmerston Council Depot
	Event	Tennant Creek Peko Park
QLD	Collection Station	Avondale Depot
	Collection Station	Ayr Transfer Station
	Event	Beerwah Resource Recovery Centre
	Retailer	Betta Home Living Gladstone
	Retailer	Betta Home Living Longreach
	Retailer	Betta Home Living Roma
	Retailer	Betta Home Living Weipa
	Retailer	Bi Rite Blackwater
	Retailer	Bi Rite Goondiwindi
	Retailer	Bi Rite Moranbah
	Collection Station	Birkdale Landfill
	Collection Station	Boonah Transfer Station
	Collection Station	Browns Plains Landfill
	Event	Buderim Resource Recovery Centre
	Collection Station	Bundaberg Waste Management Facility
	Collection Station	Bunya Waste Management Facility
	Event	Caloundra Landfill and Resource Recovery Centre
	Collection Station	Canungra Transfer Station
	Collection Station	CDS Drop Zone Eagle Farm
	Event	Central Ave Shopping Ctr Carpark
	Collection Station	Central Landfill
	Collection Station	Chandler
	Event	Charleville
	Collection Station	Childers Depot
	Event	Cleanaway Site Proserpine
	Event	Col Jones Homemakers Thursday Island
	Event	Cooroy Transfer Station
	Collection Station	Dakabin Waste Management Facility
	Retailer	Domayne Bundall
	Collection Station	Endeavour Redcliffe Collection Point QLD
	Collection Station	Endeavour Southport Collection Point QLD
	Collection Station	Endeavour Townsville Collection Point QLD
	Collection Station	Esk Refuse & Recycling Centre

APPENDIX 2:

COLLECTION SERVICES

STATE	COLLECTION TYPE	SERVICE NAME
QLD	Event	Eumundi Road Landfill
	Collection Station	Ferny Grove
	Event	Free Masons Market Town Square
	Event	Goondiwindi Landfill Facility
	Retailer	Harvey Norman Albany Creek
	Retailer	Harvey Norman Aspley
	Retailer	Harvey Norman Atherton
	Retailer	Harvey Norman Brisbane
	Retailer	Harvey Norman Browns Plains
	Retailer	Harvey Norman Bundaberg
	Retailer	Harvey Norman Bundall
	Retailer	Harvey Norman Burleigh Waters West
	Retailer	Harvey Norman Carindale
	Retailer	Harvey Norman Cleveland
	Retailer	Harvey Norman Dalby
	Retailer	Harvey Norman Everton
	Retailer	Harvey Norman Garden City
	Retailer	Harvey Norman Gympie
	Retailer	Harvey Norman Hervey Bay
	Retailer	Harvey Norman Ipswich
	Retailer	Harvey Norman Kingaroy
	Retailer	Harvey Norman Loganholme
	Retailer	Harvey Norman Mackay
	Retailer	Harvey Norman Maroochydore
	Retailer	Harvey Norman Morayfield
	Retailer	Harvey Norman Mount Isa
	Retailer	Harvey Norman Noosa
	Retailer	Harvey Norman Oxley
	Retailer	Harvey Norman Rockhampton
	Retailer	Harvey Norman Rothwell
	Retailer	Harvey Norman Toowoomba
	Retailer	Harvey Norman Townsville
	Retailer	Harvey Norman Warwick
	Collection Station	Hervey Range Waste Facility
	Event	Hot FM 93.5 Gladstone
	Collection Station	Jensen Waste Facility
	Retailer	Joyce Mayne Bundaberg

APPENDIX 2:

COLLECTION SERVICES

STATE	COLLECTION TYPE	SERVICE NAME
QLD	Retailer	Joyce Mayne Chancellor
	Retailer	Joyce Mayne Toowoomba
	Retailer	Joyce Mayne Townsville
	Event	Kelsey Creek Landfill
	Event	Kenilworth Trsf St
	Collection Station	Kilcoy Refuse & Recycling Centre
	Collection Station	Kolan (Birthamba) Depot
	Collection Station	Lifeline Ipswich Warehouse
	Event	Mapleton Transfer Station
	Collection Station	Meadowvale Depot
	Collection Station	Miami Waste & Recycling Centre
	Collection Station	Molendinar Refuse & Recycle
	Event	Mount Isa Landfill
	Collection Station	Mt. Tamborine Transfer Station
	Collection Station	Mudgeeraba Waste & Recycling
	Event	Nambour Resource Recovery Centre
	Collection Station	Nudgee Waste Transfer Station
	Retailer	Officeworks Aspley
	Retailer	Officeworks Browns Plains
	Retailer	Officeworks Cairns
	Retailer	Officeworks Capalaba
	Retailer	Officeworks Hermit Park
	Retailer	Officeworks Hervey Bay
	Retailer	Officeworks Ipswich
	Retailer	Officeworks Loganholme
	Retailer	Officeworks Mackay
	Retailer	Officeworks Maroochydore
	Retailer	Officeworks Milton
	Retailer	Officeworks Morayfield
	Retailer	Officeworks Oxley
	Retailer	Officeworks Rockhampton
	Retailer	Officeworks Rothwell
	Retailer	Officeworks Southport
	Retailer	Officeworks Strathpine
	Retailer	Officeworks Toowoomba
	Retailer	Officeworks Underwood
	Retailer	Officeworks West Burleigh

APPENDIX 2:

COLLECTION SERVICES

STATE	COLLECTION TYPE	SERVICE NAME
QLD	Retailer	Officeworks Windsor
	Retailer	Officeworks Woolloongabba
	Event	Paget Waste Management Centre
	Collection Station	Peaks Crossing Waste Site
	Event	Pomona Transfer Station
	Collection Station	Qunaba Depot
	Collection Station	Redland Bay Waste Transfer
	Event	Roma Landfill
	Collection Station	Stanthorpe Landfill
	Collection Station	Stapylton Landfill
	Collection Station	Stuart Waste Facility
	Collection Station	Swanbank Landfill
	Collection Station	Tellebudgera Waste & Recycling
	Event	Thursday Island Transfer Station
	Collection Station	Tirroan Depot
	Collection Station	Warwick Waste Management
	Event	Weipa Airport Road, Horn Island
	Collection Station	Willawong Waste Transfer Station
	Event	Witta Resource Recovery Centre
	Collection Station	Woodgate Depot
	Event	Yandina Transfer Station
SA	Collection Station	Balaklava Transfer Station
	Collection Station	Beverley Waste Transfer Station
	Collection Station	Brinkley Recycling & Waste Transfer Station
	Event	BSH Waste Solutions – Roxby Downs
	Collection Station	Cowell Waste Depot
	Collection Station	Edinburgh North
	Collection Station	Everard Waste Depot
	Collection Station	Hamley Bridge Transfer Station
	Retailer	Harvey Norman Gepps Cross
	Retailer	Harvey Norman Marion
	Retailer	Harvey Norman Mile End
	Retailer	Harvey Norman Mt Barker
	Retailer	Harvey Norman Mt Gambier
	Retailer	Harvey Norman Munno Para
	Retailer	Harvey Norman Noarlunga
	Retailer	Harvey Norman Whyalla

APPENDIX 2:

COLLECTION SERVICES

STATE	COLLECTION TYPE	SERVICE NAME
SA	Retailer	Harvey Norman Woodville
	Collection Station	Heathfield Resource Recovery Centre
	Collection Station	Kingston Transfer Station
	Collection Station	Lonsdale Recycling Depot
	Collection Station	Monash Landfill
	Collection Station	Naracoorte Waste Transfer Station
	Retailer	Officeworks Elizabeth
	Retailer	Officeworks Noarlunga
	Retailer	Officeworks Prospect
	Retailer	Officeworks Trinity Gardens
	Collection Station	Owen Transfer Station
	Collection Station	Pooraka Waste Transfer Station
	Collection Station	Port Augusta Transfer Station
	Collection Station	Port Pirie Waste Transfer Station
	Collection Station	Port Wakefield Transfer Station
	Retailer	Radio Rentals Berri
	Retailer	Retravision Ceduna
	Collection Station	Robe Waste Transfer Station
	Retailer	Roxby Traders
	Event	Streaky Bay Landfill
	Collection Station	Wingfield Resource Recovery Park
TAS	Collection Station	Brighton Waste Transfer Station
	Collection Station	George Town Waste Transfer Station
	Retailer	Harvey Norman Burnie
	Retailer	Harvey Norman Cambridge
	Retailer	Harvey Norman Devonport
	Retailer	Harvey Norman Hobart
	Retailer	Harvey Norman Launceston
	Retailer	Harvey Norman Moonah
	Collection Station	Jackson Street Waste Management Centre
	Collection Station	Kingborough Waste Services
	Collection Station	Launceston Waste Centre
	Collection Station	McRobies Gully Waste Management Centre
	Retailer	Officeworks Hobart
	Retailer	Officeworks Launceston
	Collection Station	Southbridge Waste Transfer Station
	Collection Station	Spreyton Waste Transfer Station

APPENDIX 2:

COLLECTION SERVICES

STATE	COLLECTION TYPE	SERVICE NAME
VIC	Collection Station	Alexandra Waste Transfer Station
	Collection Station	Ardmona Resource Recovery Centre
	Collection Station	Balmoral RRC
	Collection Station	Bayside Waste & Recycling Centre
	Collection Station	Beechworth Transfer Station
	Collection Station	Bellfield Waste Recovery Centre
	Collection Station	Benalla Shire Council
	Collection Station	Branxholme RRC
	Collection Station	Broadford Resource Recovery Centre
	Collection Station	Campbellfield Resource Recovery Ctre
	Collection Station	Caramut RRC
	Collection Station	Casterton RRC
	Collection Station	Castlemaine Landfill
	Collection Station	Cavendish RRC
	Collection Station	Clifton Hill
	Collection Station	Cobram Waste Transfer Station
	Collection Station	Coldstream Recovery & Waste Transfer Station
	Collection Station	Coleraine RRC
	Collection Station	Corangamite Regional Landfill
	Collection Station	Derrinallum RRC
	Collection Station	Dimboola Waste Transfer Station
	Retailer	Domayne Melbourne Qv
	Collection Station	Dunkeld RRC
	Collection Station	Echuca Environment Centre
	Collection Station	Edenhope Waste Transfer Station
	Collection Station	Euroa Transfer Station
	Collection Station	Glenthompson RRC
	Collection Station	Grantville Landfill
	Collection Station	Hamilton Landfill
	Retailer	Harvey Norman Ararat
	Retailer	Harvey Norman Bairnsdale
	Retailer	Harvey Norman Ballarat
	Retailer	Harvey Norman Bayswater
	Retailer	Harvey Norman Bendigo
	Retailer	Harvey Norman Broadmeadows
	Retailer	Harvey Norman Brunswick
	Retailer	Harvey Norman Chadstone

APPENDIX 2:

COLLECTION SERVICES

STATE	COLLECTION TYPE	SERVICE NAME
VIC	Retailer	Harvey Norman Chirnside Park
	Retailer	Harvey Norman Coburg
	Retailer	Harvey Norman Cranbourne
	Retailer	Harvey Norman Dandenong
	Retailer	Harvey Norman Fountain Gate
	Retailer	Harvey Norman Frankston
	Retailer	Harvey Norman Geelong
	Retailer	Harvey Norman Hamilton
	Retailer	Harvey Norman Hoppers Crossing
	Retailer	Harvey Norman Horsham
	Retailer	Harvey Norman Knox City
	Retailer	Harvey Norman Maribyrnong
	Retailer	Harvey Norman Mildura
	Retailer	Harvey Norman Moe
	Retailer	Harvey Norman Moorabbin
	Retailer	Harvey Norman Mornington
	Retailer	Harvey Norman Morwell
	Retailer	Harvey Norman Nunawading
	Retailer	Harvey Norman Preston
	Retailer	Harvey Norman Richmond
	Retailer	Harvey Norman Ringwood
	Retailer	Harvey Norman Sale
	Retailer	Harvey Norman Shepparton
	Retailer	Harvey Norman Springvale
	Retailer	Harvey Norman Sunshine
	Retailer	Harvey Norman Swan Hill
	Retailer	Harvey Norman Taylors Lake
	Retailer	Harvey Norman Thomastown
	Retailer	Harvey Norman Traralgon
	Retailer	Harvey Norman Wangaratta
	Retailer	Harvey Norman Warragul
	Retailer	Harvey Norman Warrnambool
	Retailer	Harvey Norman Waurin Ponds
	Retailer	Harvey Norman Wonthaggi
	Collection Station	Hawkesdale RRC
	Collection Station	Heywood RRC
	Collection Station	Horsham Transfer Station

APPENDIX 2:

COLLECTION SERVICES

STATE	COLLECTION TYPE	SERVICE NAME
VIC	Collection Station	Inverloch Transfer Station
	Collection Station	Killarney RRC
	Collection Station	Kilmany Landfill
	Event	Loch Sport Transfer Station
	Collection Station	Mansfield Resource Recovery Centre
	Collection Station	Melton Transfer Station
	Collection Station	Mornington Resource Recovery Centre
	Collection Station	Mortlake RRC
	Collection Station	Mount Scobie Waste Transfer Station
	Collection Station	Mt Beauty Transfer Station
	Collection Station	Myrtleford Transfer Station
	Collection Station	Nagambie Transfer Station
	Collection Station	Naroghid Landfill
	Collection Station	Nillumbik Recovery & Recycling Centre
	Collection Station	Numurkah Waste Transfer Station
	Retailer	Officeworks Airport West
	Retailer	Officeworks Ascot Vale
	Retailer	Officeworks Ballarat
	Retailer	Officeworks Bayswater
	Retailer	Officeworks Bendigo
	Retailer	Officeworks Box Hill South
	Retailer	Officeworks Bundoora
	Retailer	Officeworks Campbellfield
	Retailer	Officeworks Carnegie
	Retailer	Officeworks Caroline Springs
	Retailer	Officeworks Chadstone
	Retailer	Officeworks Coburg
	Retailer	Officeworks Cranbourne
	Retailer	Officeworks Dandenong
	Retailer	Officeworks Doncaster
	Retailer	Officeworks Epping
	Retailer	Officeworks Ferntree Gully
	Retailer	Officeworks Fitzroy
	Retailer	Officeworks Frankston
	Retailer	Officeworks Geelong
	Retailer	Officeworks Glen Waverley
	Retailer	Officeworks Hawthorn East

APPENDIX 2:

COLLECTION SERVICES

STATE	COLLECTION TYPE	SERVICE NAME
VIC	Retailer	Officeworks Highett
	Retailer	Officeworks Kew East
	Retailer	Officeworks Keysborough
	Retailer	Officeworks Maribyrnong
	Retailer	Officeworks Mildura
	Retailer	Officeworks Mornington
	Retailer	Officeworks Narre Warren
	Retailer	Officeworks Nunawading
	Retailer	Officeworks Pakenham
	Retailer	Officeworks Preston
	Retailer	Officeworks Richmond
	Retailer	Officeworks Ringwood
	Retailer	Officeworks Russell Street Melbourne
	Retailer	Officeworks Shepparton
	Retailer	Officeworks South Melbourne
	Retailer	Officeworks South Yarra
	Retailer	Officeworks Taylors Lakes
	Retailer	Officeworks Traralgon
	Retailer	Officeworks Vermont South
	Retailer	Officeworks Werribee
	Retailer	Officeworks Yarraville
	Collection Station	Penshurst RRC
	Collection Station	Peterborough RRC
	Collection Station	Porepunkah Transfer Station
	Collection Station	Port Campbell RRC
	Collection Station	Port Fairy RRC
	Collection Station	Port Phillip Resource Recovery Centre (Transfer Station)
	Collection Station	Portland Landfill
	Collection Station	Rutherglen Transfer Station
	Collection Station	Rye Transfer Station
	Collection Station	Seymour Resource Recovery Centre
	Collection Station	Shepparton Transfer Station
	Collection Station	Simpson RRC
	Collection Station	SITA Ballarat
	Collection Station	SITA Epsom
	Collection Station	SITA Geelong
	Collection Station	SITA Hampton Park

APPENDIX 2:

COLLECTION SERVICES

STATE	COLLECTION TYPE	SERVICE NAME
VIC	Collection Station	Skipton RRC
	Collection Station	Sunbury Transfer Station
	Collection Station	Timboon RRC
	Collection Station	Tyabb Waste Transfer Station
	Collection Station	Wallan Resource Recovery Centre
	Collection Station	Wangaratta Transfer Station
	Collection Station	WDEA
	Collection Station	Wonthaggi Transfer Station
	Collection Station	Yarrawonga Waste Transfer Station
WA	Event	7 Mile Waste Disposal Karratha
	Retailer	Betta Home Living Broome
	Retailer	Betta Home Living Carnarvon
	Retailer	Betta Home Living Derby
	Retailer	Betta Home Living Kununurra
	Retailer	Betta Home Living Narrogin
	Retailer	Betta Home Living Newman
	Retailer	Betta Home Living Tom Price
	Event	Broome Waste Management Facility
	Event	Carnarvon Shire Depot
	Event	City of Melville Operations Centre
	Collection Station	Coppin Rd Transfer Station Mundaring
	Event	Derby Waste Management Facility
	Event	Dongara Transfer Station
	Event	Esperance Boulevard Shopping Centre
	Retailer	Harvey Norman Albany
	Retailer	Harvey Norman Armadale
	Retailer	Harvey Norman Belmont
	Retailer	Harvey Norman Bunbury
	Retailer	Harvey Norman Cannington
	Retailer	Harvey Norman City West
	Retailer	Harvey Norman Joondalup
	Retailer	Harvey Norman Kalgoorlie
	Retailer	Harvey Norman Karratha
	Retailer	Harvey Norman Malaga
	Retailer	Harvey Norman Mandurah
	Retailer	Harvey Norman Midland
	Retailer	Harvey Norman Midland Warehouse

APPENDIX 2:

COLLECTION SERVICES

STATE	COLLECTION TYPE	SERVICE NAME
WA	Retailer	Harvey Norman O'Connor
	Retailer	Harvey Norman Osborne Park
	Retailer	Harvey Norman Peppermint Grove
	Retailer	Harvey Norman Port Hedland
	Retailer	Harvey Norman Port Kennedy
	Collection Station	Henderson Waste Recovery Park
	Collection Station	JFR McGeough Res.Recovery henton Park
	Event	Kalgoorlie Transpacific
	Event	Kununurra Waste Management Facility
	Collection Station	Mathieson Road Transfer Station Chedlow
	Event	Narrogin Rubbish Tip
	Event	Newman Landfill
	Retailer	Officeworks Albany
	Retailer	Officeworks Bunbury
	Retailer	Officeworks East Perth
	Retailer	Officeworks East Victoria Park
	Retailer	Officeworks Fremantle
	Retailer	Officeworks Mandurah
	Retailer	Officeworks Midland
	Retailer	Officeworks O'Connor
	Retailer	Officeworks Osborne Park
	Event	O'Neill Road Mount Barker Transfer Station
	Collection Station	Remondis Osborne Park Depot
	Collection Station	Richardson Road Landfill Harvey
	Event	South Hedland Landfill

APPENDIX 3:

SERVICE PROVIDERS CONTRACTED

C BIGG-WITHER & G SREJIC	Collection
2nd Hand Saturday	Collection
ADELAIDE HILLS COUNCIL	Collection
ADELAIDE HILLS REGION WASTE MANAGEMENT AUTHORITY	Collection
ALPINE SHIRE	Collection
BALLINA SHIRE COUNCIL	Collection
BANYULE CITY COUNCIL	Collection
BASS COAST SHIRE COUNCIL	Collection
BEGA VALLEY SHIRE COUNCIL	Collection
BENALLA RURAL CITY COUNCIL	Collection
BERRI BARMERA COUNCIL	Collection
BOOROWA COUNCIL	Collection
BRIGHTON COUNCIL	Collection
Brisbane City Council	Collection
Bundaberg Regional Council	Collection
BURDEKIN SHIRE COUNCIL	Collection
CAMPASPE SHIRE COUNCIL	Collection
CERTIFIED DESTRUCTION SERVICES PTY LTD	Collection
CHARLES STURT PTY LTD	Collection
CITY OF COCKBURN	Collection
CITY OF MOUNT GAMBIER	Collection
CITY OF PLAYFORD	Collection
CITY OF PORT PHILLIP	Collection
CITY OF SALISBURY	Collection
DEVONPORT CITY COUNCIL	Collection
DISTRICT COUNCIL OF FRANKLIN HARBOUR	Collection
EASTERN METROPOLITAN REGIONAL COUNCIL	Collection
ECYCLECORP PTY LTD	Collection
ENDEAVOUR FOUNDATION	Collection
EUROBODALLA SHIRE COUNCIL	Collection
GLENFIELD WASTE SERVICES	Collection
GLENORCHY CITY COUNCIL	Collection
Gold Coast City Council	Collection
GRAB A LOAD	Collection
GREATER SHEPPARTON CITY COUNCIL	Collection
GRETA GROUP PTY. LTD.	Collection
HARDEN SHIRE COUNCIL	Collection
HARVEY NORMAN HOLDINGS LTD	Collection
HINDMARSH SHIRE COUNCIL	Collection

APPENDIX 3:

SERVICE PROVIDERS CONTRACTED

HOBART CITY COUNCIL	Collection
HORSHAM RURAL CITY COUNCIL	Collection
HUME CITY COUNCIL	Collection
HUNTER RESOURCE RECOVERY	Collection
HUON VALLEY COUNCIL	Collection
INDIGO SHIRE COUNCIL	Collection
JOBLINK PLUS LIMITED	Collection
Kimbriki Environmental Enterprises Pty Ltd	Collection
KINGBOROUGH COUNCIL	Collection
KINGSTON CITY COUNCIL	Collection
KURRAJONG WARATAH	Collection
LAUNCESTON CITY COUNCIL	Collection
LAUNCESTON CITY MISSION INC	Collection
LEICHHARDT MUNICIPAL COUNCIL	Collection
Logan City Council	Collection
Mai-Wel Limited	Collection
Mansfield Shire Council	Collection
MARRICKVILLE COUNCIL	Collection
MITCHELL SHIRE COUNCIL	Collection
MOIRA SHIRE COUNCIL	Collection
Moreton Bay Regional Council	Collection
MORNGINTON PENINSULA SHIRE COUNCIL	Collection
MOUNT ALEXANDER SHIRE COUNCIL	Collection
MRI (Aust) Pty Ltd	Collection
MURRINDINDI SHIRE COUNCIL	Collection
NARACOORTE LUCINDALE COUNCIL	Collection
NAWMA (NORTHERN ADELAIDE WASTE MANAGEMENT AUTHORITY)	Collection
NILLUMBIK SHIRE COUNCIL	Collection
OFFICEWORKS SUPERSTORES PTY LTD	Collection
PALERANG COUNCIL	Collection
PAUL TRESIDDER NOMINEES PTY ATF TRESIDDER FAMILY TRUST	Collection
PGM REFINERS PTY. LIMITED	Collection
PORT PIRIE COUNCIL	Collection
QLS GROUP	Collection
Redland Bay Regional Council	Collection
REMONDIS AUSTRALIA PTY LTD	Collection
REROC (RIVERINA EASTERN REGIONAL ORGANISATION OF COUNCILS)	Collection
ROSSI RECYCLING PTY LTD	Collection
S.A.GROUP ENTERPRISES INCORPERATED	Collection

APPENDIX 3:

SERVICE PROVIDERS CONTRACTED

Scenic Rim Regional Council	Collection
SHIRE OF HARVEY	Collection
SHIRE OF MUNDARING	Collection
SHIRE OF SERPENTINE JARRAHDALE	Collection
SHIRE OF STRATHBOGIE	Collection
SHOALHAVEN CITY COUNCIL	Collection
SITA PTY LTD	Collection
SOCIETY OF ST VINCENT DE PAUL OZANAM INDUSTRIES	Collection
SOMERSET REGIONAL COUNCIL	Collection
SRS Recycling Pty Ltd	Collection
Sunshine Coast City Council	Collection
Sunshine Coast Regional Council	Collection
THE J R UNIT TRUST TRADING AS COPPER ROCK INVESTMENTS PTY LTD	Collection
The Trustee for THE LACHLAN A KENNETT FAMILY TRUST	Collection
TOWNSVILLE CITY COUNCIL	Collection
TRANSPACIFIC INDUSTRIES	Collection
TSR E-WASTE PTY LTD	Collection
URBAN SERVICE SOLUTIONS PTY. LTD.	Collection
W M WASTE MANAGEMENT SERVICES	Collection
WAKEFIELD REGIONAL COUNCIL	Collection
WANGARATTA RURAL CITY COUNCIL	Collection
WELLINGTON SHIRE COUNCIL	Collection
WESTERN DISTRICT EMPLOYMENT ACCESS INCORPORATED	Collection
WESTERN METROPOLITAN REGIONAL COUNCIL	Collection
WIMMERA SHIRE COUNCIL	Collection
WOLLONGONG CITY COUNCIL	Collection
YARRA CITY COUNCIL	Collection
YARRA RANGES SHIRE COUNCIL	Collection
YASS VALLEY COUNCIL	Collection
YOUNG SHIRE COUNCIL	Collection
AUSTRALIAN FOUNDATION FOR DISABILITY	Recycling
CERTIFIED DESTRUCTION SERVICES PTY LTD	Recycling
Community AXIS Enterprises Incorporated	Recycling
ec3 Recycling	Recycling
ECYCLECORP PTY LTD	Recycling
ENDEAVOUR FOUNDATION	Recycling
JOBLINK PLUS LIMITED	Recycling
KURRAJONG WARATAH	Recycling
LAUNCESTON CITY MISSION INC	Recycling

APPENDIX 3:

SERVICE PROVIDERS CONTRACTED

MAI-WEL LIMITED	Recycling
MRI (AUST) PTY LTD	Recycling
PGM REFINERS PTY. LIMITED	Recycling
RICHMOND PRA	Recycling
SA Group Enterprises Incorporated	Recycling
SITA AUSTRALIA PTY LTD	Recycling
SRS Recycling Pty Ltd	Recycling
TES-AMM Australia Pty Ltd	Recycling
TOTAL GREEN RECYCLING PTY LTD	Recycling
TSR E-WASTE PTY LTD	Recycling
VINCENTCARE VICTORIA	Recycling
WESTERN DISTRICT EMPLOYMENT ACCESS INCORPORATED	Recycling
BRIAN BURT FAMILY TRUST	Transport
CERTIFIED DESTRUCTION SERVICES PTY LTD	Transport
DHL SUPPLY CHAIN (AUSTRALIA) PTY LIMITED	Transport
GRAB-A-LOAD PTY. LTD.	Transport
HUNTER RESOURCE RECOVERY	Transport
KURRAJONG WARATAH	Transport
LAUNCESTON CITY MISSION INC	Transport
Mai-Wel Limited	Transport
MRI (AUST) PTY LTD	Transport
NATIONAL EWASTE ALLIANCE PTY LTD	Transport
REMONDIS AUSTRALIA PTY LTD	Transport
THE J R UNIT TRUST TRADING AS COPPER ROCK INVESTMENTS PTY LTD	Transport
TIC (REVERSE LOGISTICS) PTY LTD	Transport
URBAN SERVICE SOLUTIONS PTY. LTD.	Transport
VEOLIA ENVIRONMENTAL SERVICES (AUSTRALIA) PTY LTD	Transport
WHELAN KARTAWAY PTY. LTD.	Transport
BRONZEWING	Transport
CITY MISSION	Transport
E-RECYCLING P/L	Transport
McCABE TRANSPORT	Transport
SITA AUST P/L	Transport
TOTAL GREEN RECYCLING PTY LTD	Transport
TSR EWASTE P/L	Transport

APPENDIX 4:

SUMMARY OF PRODUCT WEIGHT COLLECTED BY STATE AND REGION

STATE	REGION	TOTAL
ACT	Metro	847.88
	Inner regional	-
	Outer regional	-
	Remote	-
NSW	Metro	3,345.31
	Inner regional	1,809.05
	Outer regional	55.39
	Remote	0.47
NT	Metro	
	Inner regional	
	Outer regional	0.64
	Remote	6.74
QLD	Metro	2,229.96
	Inner regional	366.86
	Outer regional	232.43
	Remote	10.16
SA	Metro	1,579.46
	Inner regional	111.10
	Outer regional	88.85
	Remote	25.42
TAS	Metro	
	Inner regional	786.36
	Outer regional	11.01
	Remote	
VIC	Metro	1,911.81
	Inner regional	980.59
	Outer regional	141.80
	Remote	
WA	Metro	296.40
	Inner regional	29.38
	Outer regional	11.48
	Remote	17.54
TOTAL COLLECTIONS BY LOCATION		14,896 Tonnes
LIABLE PARTY COLLECTIONS		51 Tonnes
RECYCLER CREDIT		73 Tonnes
AUSTRALIAN TOTAL		14,874 Tonnes



**DROP
ZONE**

***ENVIRO*SOLUTIONS**

DHL Supply Chain (Australia) Pty Limited
ABN 85 071 798 617
Rhodes Corporate Park, Level 3, Building A
1 Homebush Bay Drive, Rhodes NSW 2138 Australia
PO BOX 3175 Rhodes NSW 2138 Australia

Phone +61 (0) 2 8759 7000
Fax +61 (0) 2 8759 7190
www.dhl.com

