



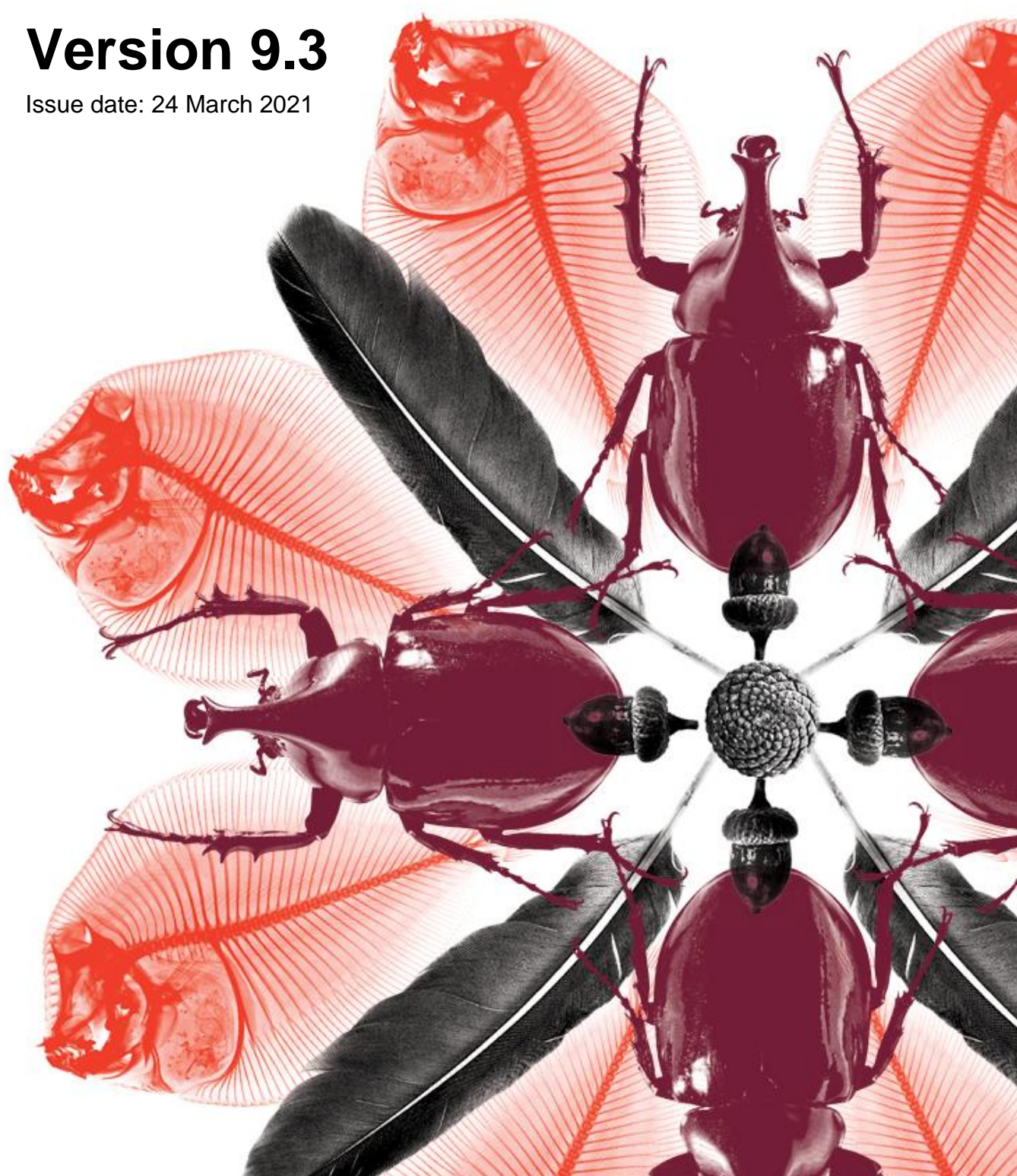
Australian Government
Department of Agriculture,
Water and the Environment

EXDOC Exporter Interface System Specification

Errata Set 50

Version 9.3

Issue date: 24 March 2021



Introduction

This document lists amendments that have been identified for Version 9.2 of the Exporter Interface System Specification issued March 2021. It follows Errata Set 48. Please update your copy of the specification as appropriate.

Within the following document where there are changes to segment or data rules the entire segment has been reproduced with the changes to the rules underlined. Where text has been deleted the text is displayed in the sections below with lines through the text. Where text has been added the text is underlined in the sections below.

5.2.3.35 Reason 13 (Lodge): GR0 GIS (Role – Declaration of Compliance Indicator)

Segment Rule: Conditional. Required if Commodity Type is set to 'D' (Dairy), 'E' (Eggs), 'F' (Fish), 'G' (Grains), 'H' (Horticulture) or 'M' (Meat).

Segment Rule: The Exporter Software must display the following text for 'D' (Dairy), 'E' (Eggs) or 'F' (Fish) commodities when collecting the data for this segment:

Is the exporter in possession of either:

- (a) A declaration that complies with Part 4 of Chapter 7 of the relevant Rules:
or
- (b) A written notice provided by an assessor made under subsection 9-20(2) of Chapter 9 of the relevant Rules (Y/N)

Segment Rule: The Exporter Software must display the following text for 'G' (Grains) or 'H' (Horticulture) commodities when collecting the data for this segment:

Do you declare that:

- i. the importing country requirements applicable to the goods have been verified with importing country's National Plant Protection Organisation, and any changes have been provided to the department;
- ii. the goods have been prepared in accordance with relevant conditions or restrictions prescribed under the Export Control Act 2020 and, where required, are ready for assessment;
- iii. the information supplied on this form is true and correct.

Note: A person may commit an offence or be liable to a civil penalty under the Export Control Act 2020 or Criminal Code Act 1995 if the person makes a false or misleading statement in an application or provides false or misleading information or documents.

Segment Rule: The Exporter Software must display the following text for 'M' (Meat) commodity when collecting the data for this segment:

Do you declare that:

- i. ~~the importing country requirements applicable to the goods have been met or will be met before the goods are imported into the importing country;~~
- ii. ~~the goods have been prepared in compliance with the Export Control Act 2020 and have in your possession a declaration that complies with Part 4 of Chapter 7 of the relevant Rules;~~
- iii. ~~the information supplied on this form is true and correct.~~

Do you declare that you have evidence supporting:

- i. the importing country requirements applicable to the goods have been met or will be met before the goods are imported into the importing country
- ii. the goods have been prepared in compliance with the Export Control Act 2020
- iii. I have supervised, or have been given a declaration by the person who supervised, the loading of the goods to which this application relates stating that the prescribed export conditions, and any other conditions that apply in relation to the goods under the Act, have been complied with; and the importing country requirements relating to the goods are met
- iv. the information supplied on this form is true and correct.

Note: A person may commit an offence or be liable to a civil penalty under the Export Control Act 2020 or Criminal Code Act 1995 if the person makes a false or misleading statement in an application or provides false or misleading information or documents.