



October
2013

Bulk woodchips

Plant export inspection techniques guide

FOP3001 Bulk woodchips



How to use this guide

This guide has been written for authorised officers as a reference guide to inspection techniques for plant export commodities. This will help to ensure that all authorised officers maintain nationally consistent inspection techniques for bulk woodchips.

The guide should be read in conjunction with the equipment guide for non-horticulture products and current instructional and reference material.

General notes on inspecting bulk woodchips

Bulk woodchips presented for export inspection can only be sampled during the loading of containers or vessels.

Subsamples can be combined, provided that no more than one litre is screened at any one time.

Inspect all samples using suitable equipment.

Perform the inspection in an area that has adequate light and is not compromised by the environment.

Before you start

Ensure that you:

- check the importing country requirements to determine the requirements for your inspection
- have the correct inspection equipment
- have the correct Export Compliance Record
- wear appropriate personal protective equipment
- have the current relevant instructional and reference material.

Inspection process

Bulk woodchips in piles from which they are loaded.



To inspect subsamples, pour the subsample into a sieve.



Shake the sieve sufficiently to enable the woodchips to move across the mesh for effective sieving.



Shaking allows small particles to fall through the sieve to the pan.



Examine the surface of the woodchips to identify any pests or contaminants that have not passed through the sieve.



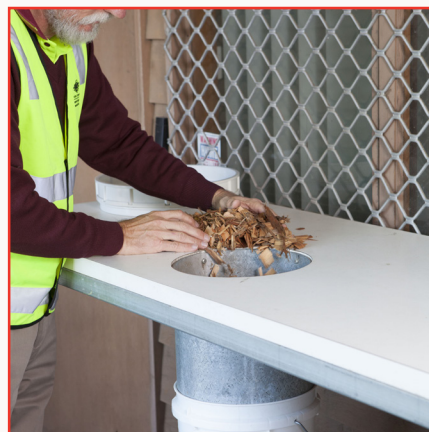
Examine all pan contents for pests and contaminants.



Use a torch and hand lens, if necessary, to examine small pests closely.



Return the inspected samples to the product source, if requested by the client.



What to do if you find a pest or disease

Follow the rejection procedures outlined in the relevant instructional and reference material.

More information

Export Control Act 1982

Export Control (Orders)
Regulations 1982

Export Control (Plants and Plant
Products) Order 2011

Plant export operations manual
(PEOM):
[www.daff.gov.au/biosecurity/
export/plants-plant-products/
plantexportsmanual](http://www.daff.gov.au/biosecurity/export/plants-plant-products/plantexportsmanual)

Manual of Importing Country
Requirements (MICO—Plants):
www.daff.gov.au/micor/plants



Common contaminants, pests and diseases

Contaminants

- sand and soil
- objectionable material (metal, plastic).

Pests and diseases

- borers
 - powderpost beetles (borer insects in the Lyctinae subfamily)
 - anobiid borers
 - longicorn beetles (Cerambycidae family)
 - bark beetles (Scolytinae subfamily)
 - false powderpost beetle/auger beetle (Bostrichidae family)
- termites
- miscellaneous pests
 - giant wood moth
 - sirex wood wasp
- fungal diseases (e.g. symptoms of rot/discolouration).

Refer to the *Plant export operations manual* for detailed information on pests, diseases and contaminants of export forest products.



Phone 1800 851 305



www.daff.gov.au/plantexportsmanual