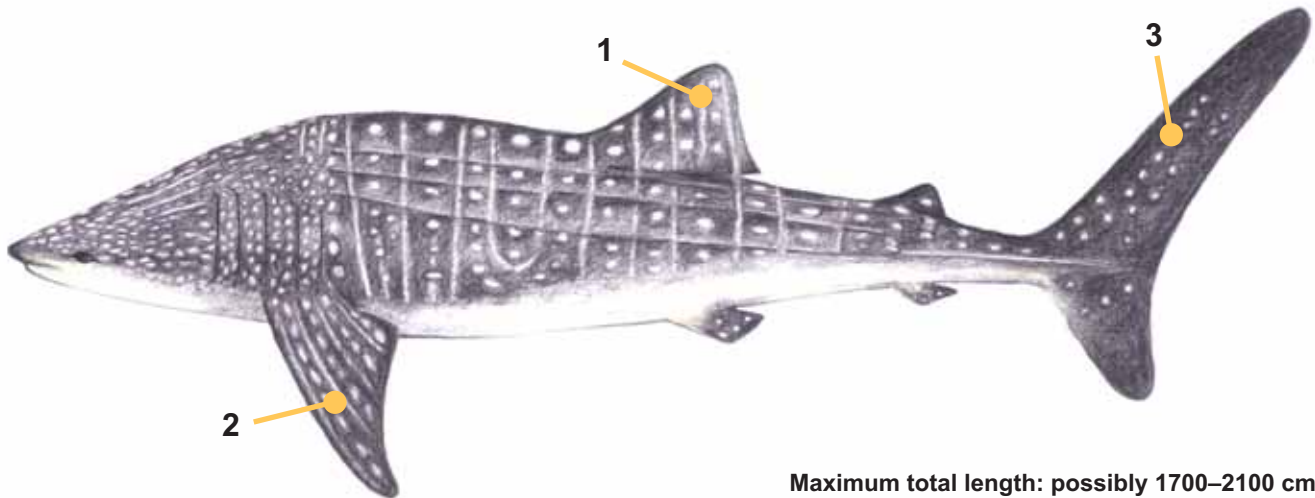


# Whale Shark

*Rhincodon typus*



Maximum total length: possibly 1700–2100 cm

## Fins

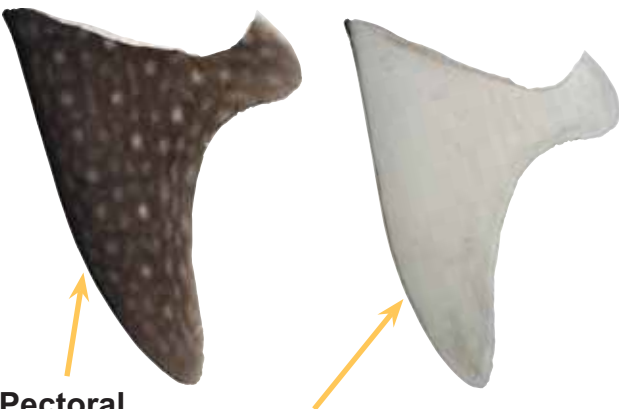
### 1. First dorsal

Broadly triangular, usually broadly rounded at tip in juveniles (adult fins more upright and angular, see above illustration), whitish spots evident



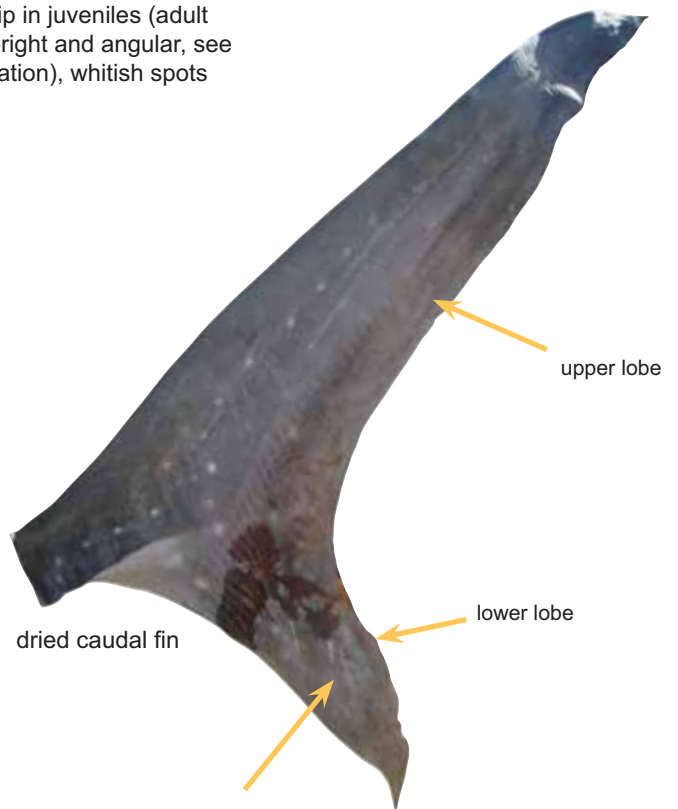
### 2. Pectoral

Falcate; upper surface (left) with creamy white spots, lower surface (right) white (from juvenile)



### 3. Caudal

Upper lobe much larger (less so in adults) than lower lobe, whitish spots evident



## Teeth & Vertebrae

---



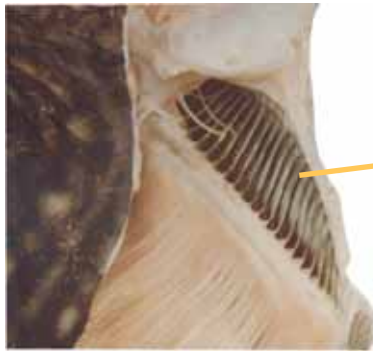
Teeth minute and similar in both jaws. More than 300 rows in each jaw. Teeth with a strong cusp, edge not serrated.



Dried vertebral disc  
(front view)

## Gills

---



Gill arch (fresh)



Gill bars forming a ladder effect (close-up)

## Flesh

---



Flesh is primary traded product, whitish with spongy texture (resembling tofu). Genetic tests are required for positive identification.

**Genetic Barcode:** Genetic information for Whale Shark is available at Genbank (<http://www.ncbi.nlm.nih.gov/Genbank/>) or FishBol (<http://www.barcodeoflife.org>).



Australian Government  
Department of the Environment  
and Water Resources

Copies of this ID sheet are available from: <http://www.environment.gov.au/biodiversity/trade-use/cites>