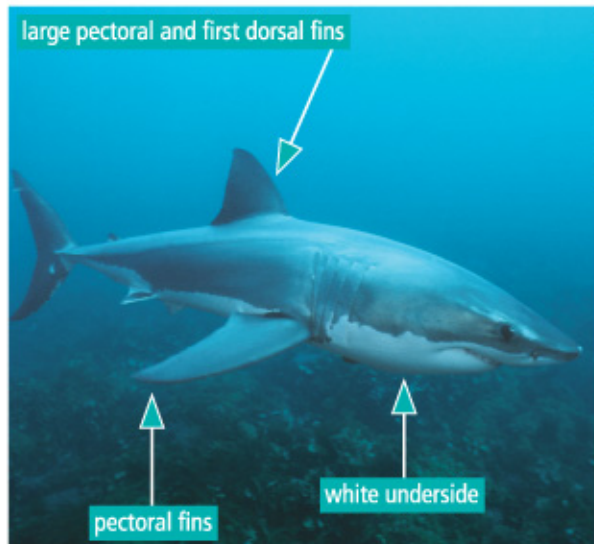


Great White Shark

Scientific Name: Carcharodon carcharias



Distribution: All States, but predominantly southern

EPBC Act Status: Vulnerable and Migratory

Length: Average 3-5m but may reach 7m

Colour: Grey or bronze-coloured on top and white below.

Key Features: Torpedo-shaped with a pointed snout; large pectoral and first dorsal fins; crescent-shaped tail; large black eyes; several rows of serrated teeth.

Preferred Habitat: Coastal and offshore areas of the continental and insular shelves and offshore continental islands, may frequent sites where seals and sea lions breed.

They can enter very shallow water in search of prey, but can also be found at depths to 1200 metres.



Distribution