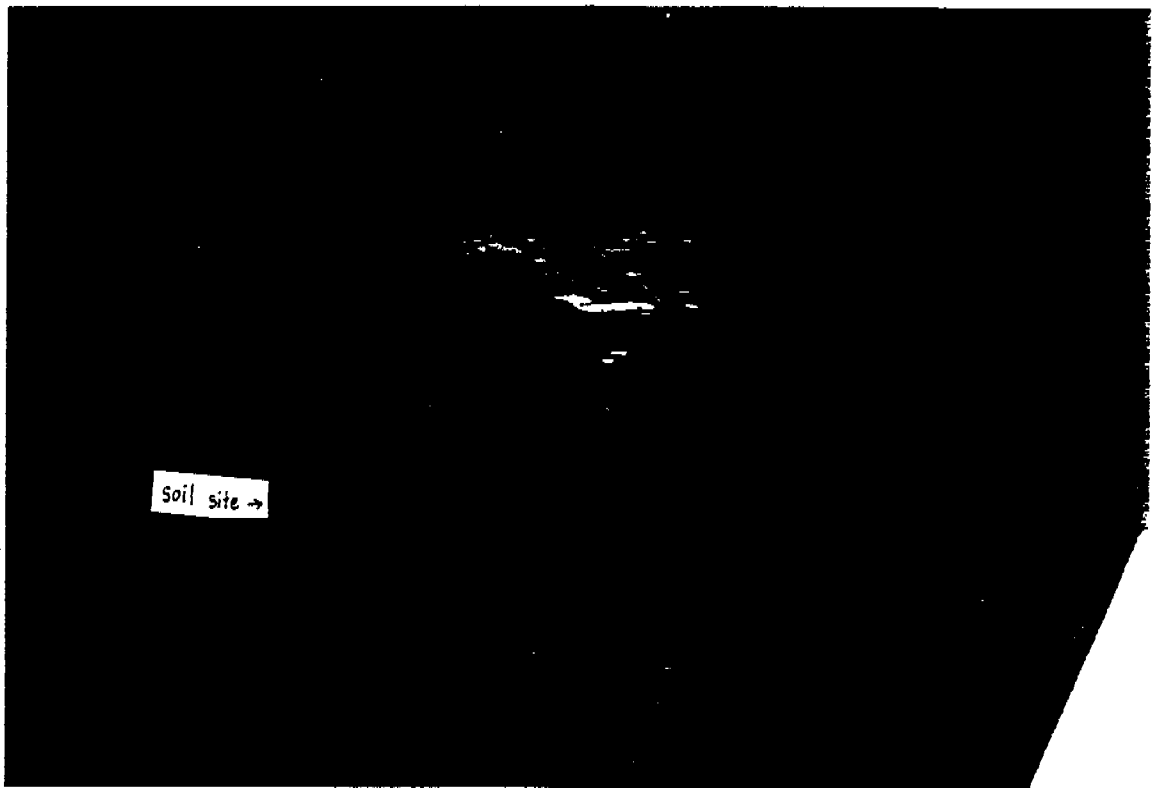


APPENDIX A

Photographs of the Soil Site during the 95/96 wet season



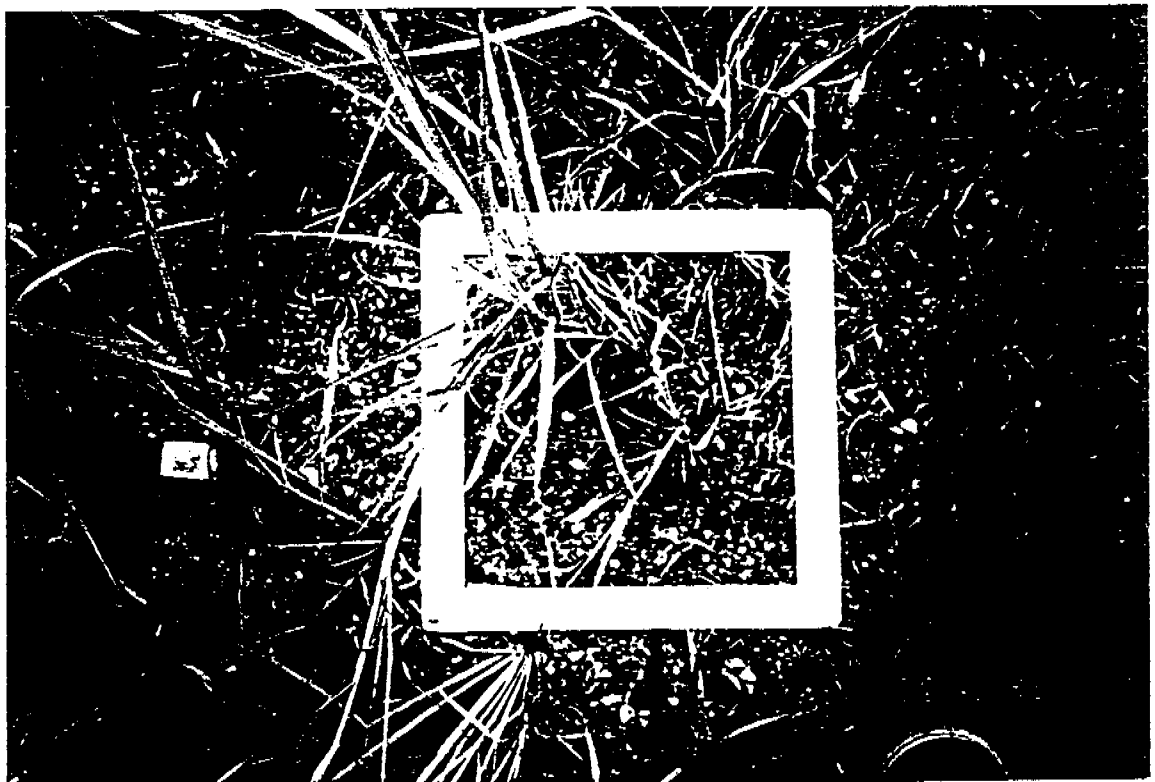
Ranger Uranium Mine



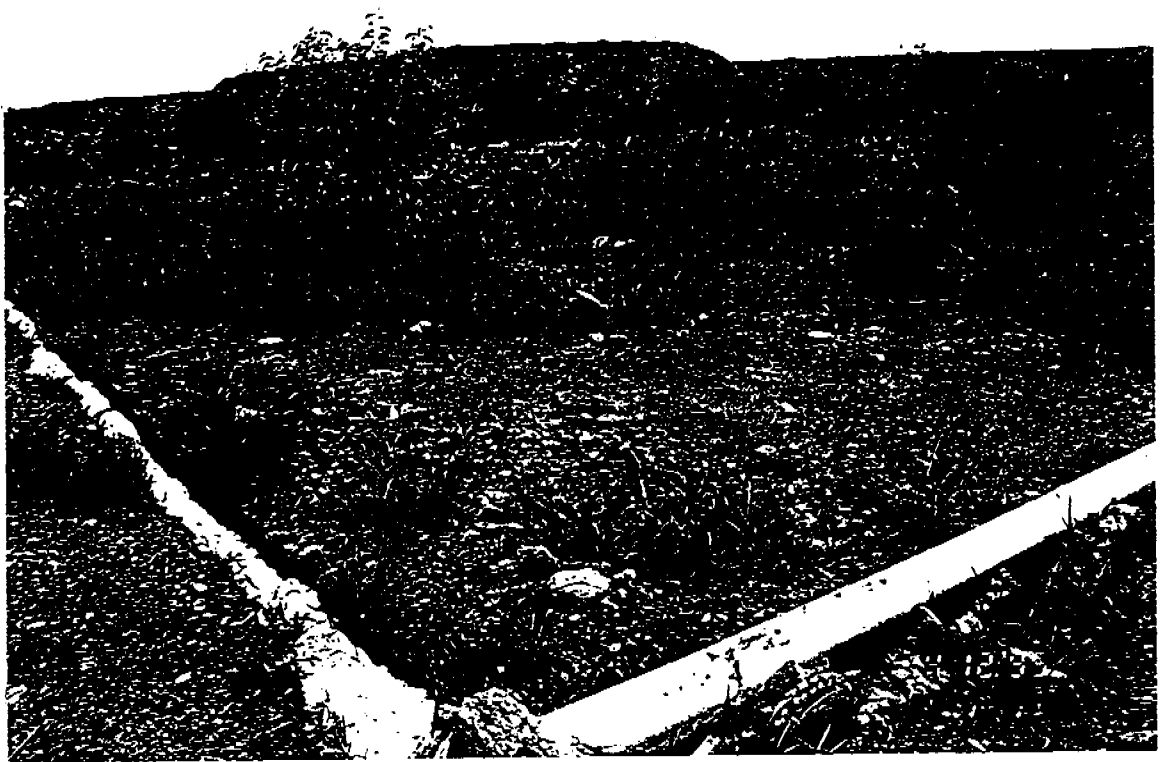
The Pit



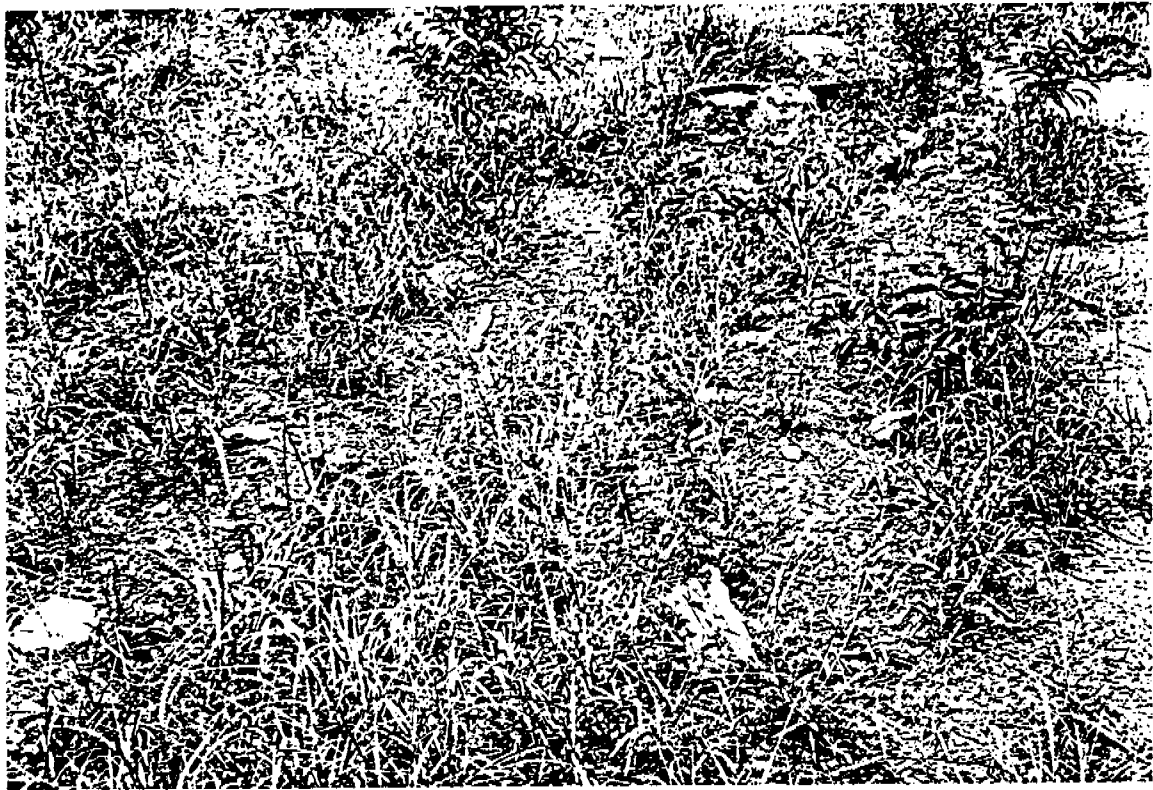
Location of Tipping Bucket Raingauge



Biomass Sampling



High Ground at front right hand corner of soil site at beginning and end of
95/96 Wet Season



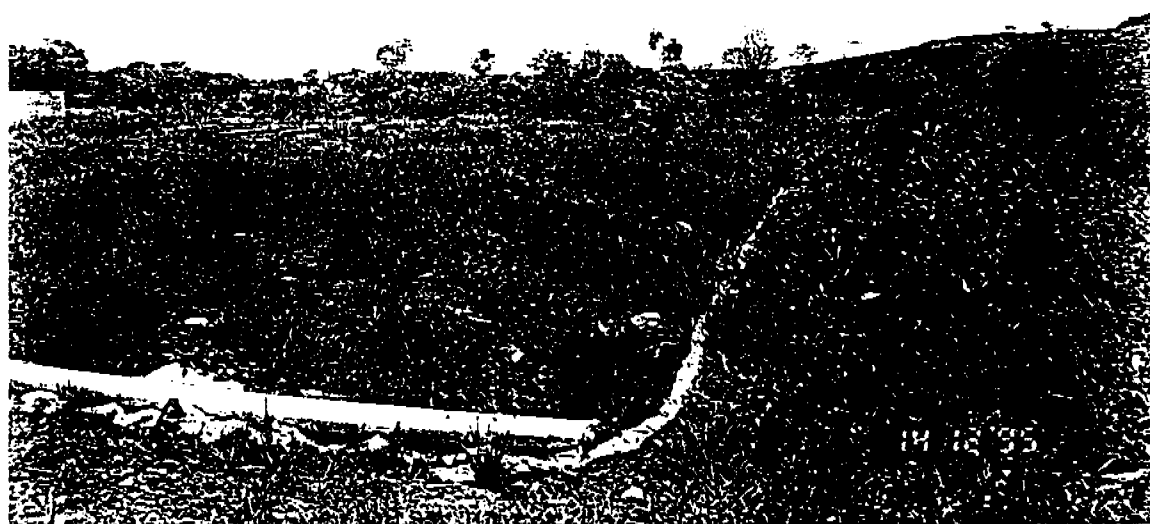
Grass growing in rips at front right hand corner of soil site at beginning and end of 95/96 Wet Season



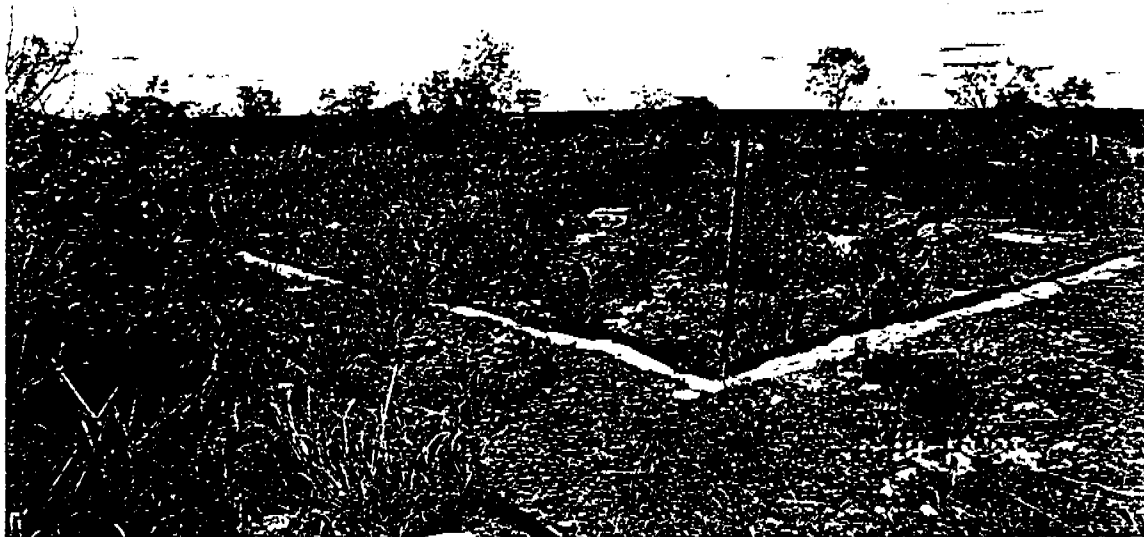
Views of the Soil Site on 1/12/95



Views of the Soil Site on 1/12/95



Views of the Soil Site on 14/12/95



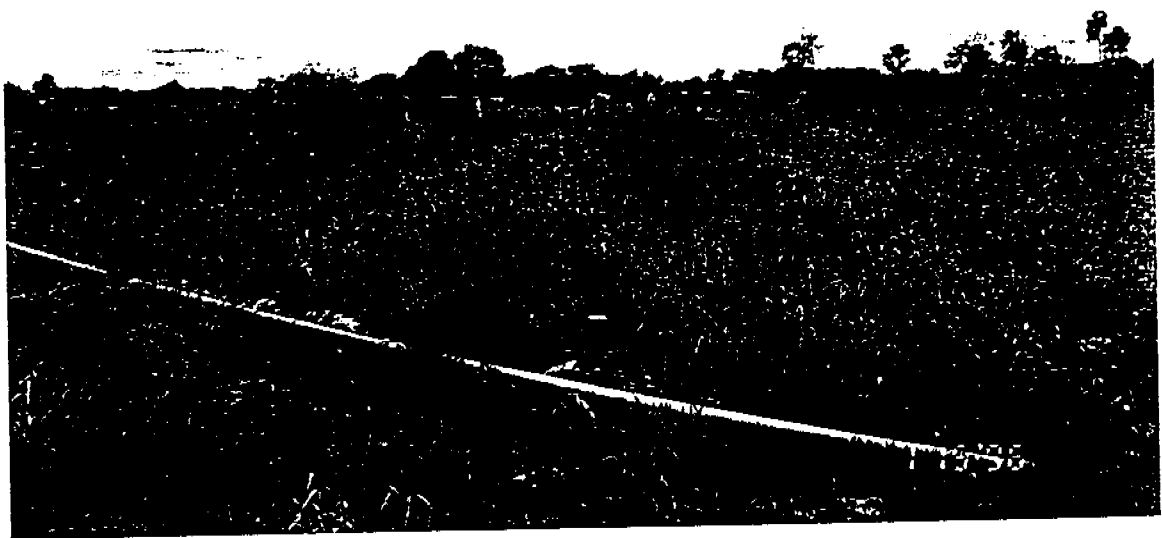
Views of the Soil Site on 14/12/95



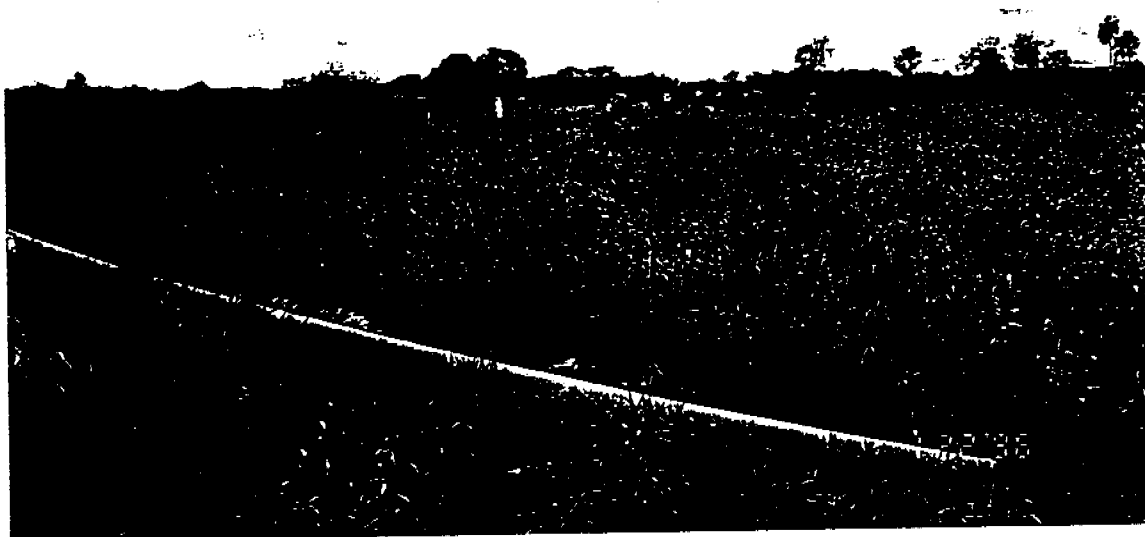
Views of the Soil Site on 8/1/96



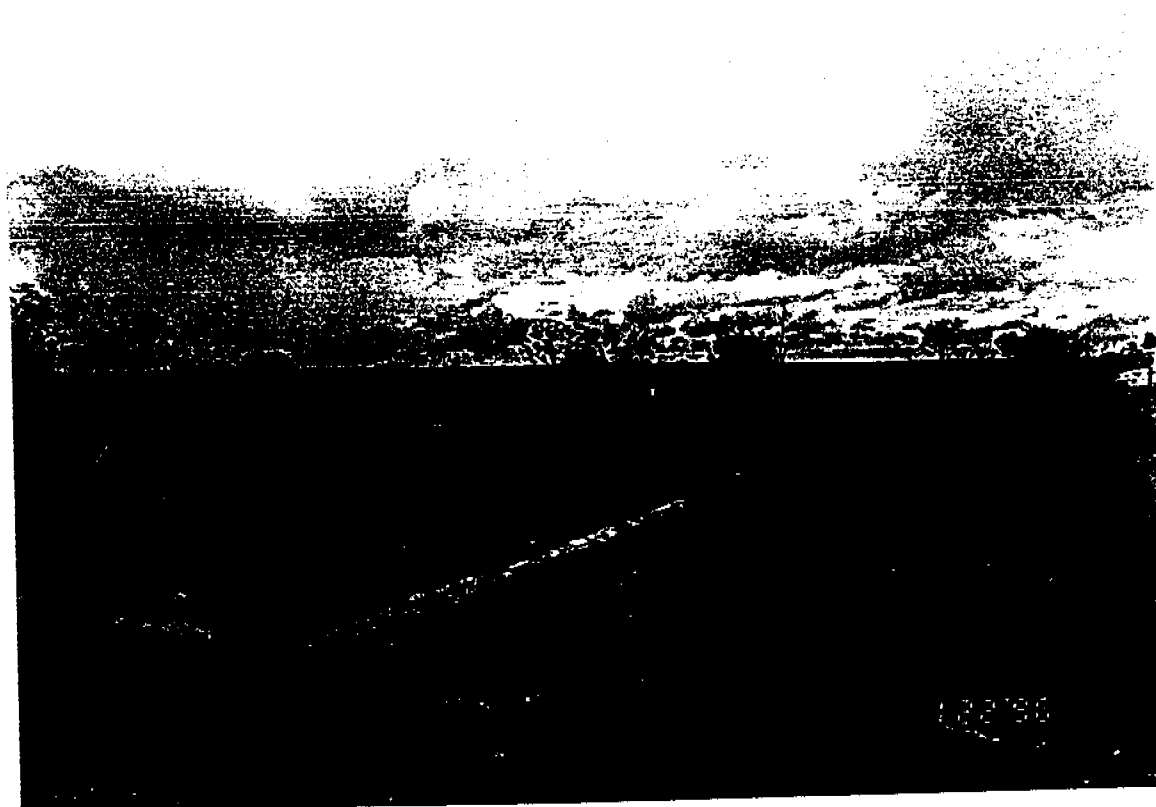
Views of the Soil Site on 8/1/96



Views of the Soil Site on 15/1/96



Views of the Soil Site on 22/1/96



Views of the Soil Site on 22/1/96



Views of the Soil Site on 29/1/96



Views of the Soil Site on 5/2/96



Views of the Soil Site on 12/2/96



Percentage Cover Quadrat 1



Percentage Cover Quadrat 2
2/1/96



Percentage Cover Quadrat 3



Percentage Cover Quadrat 4

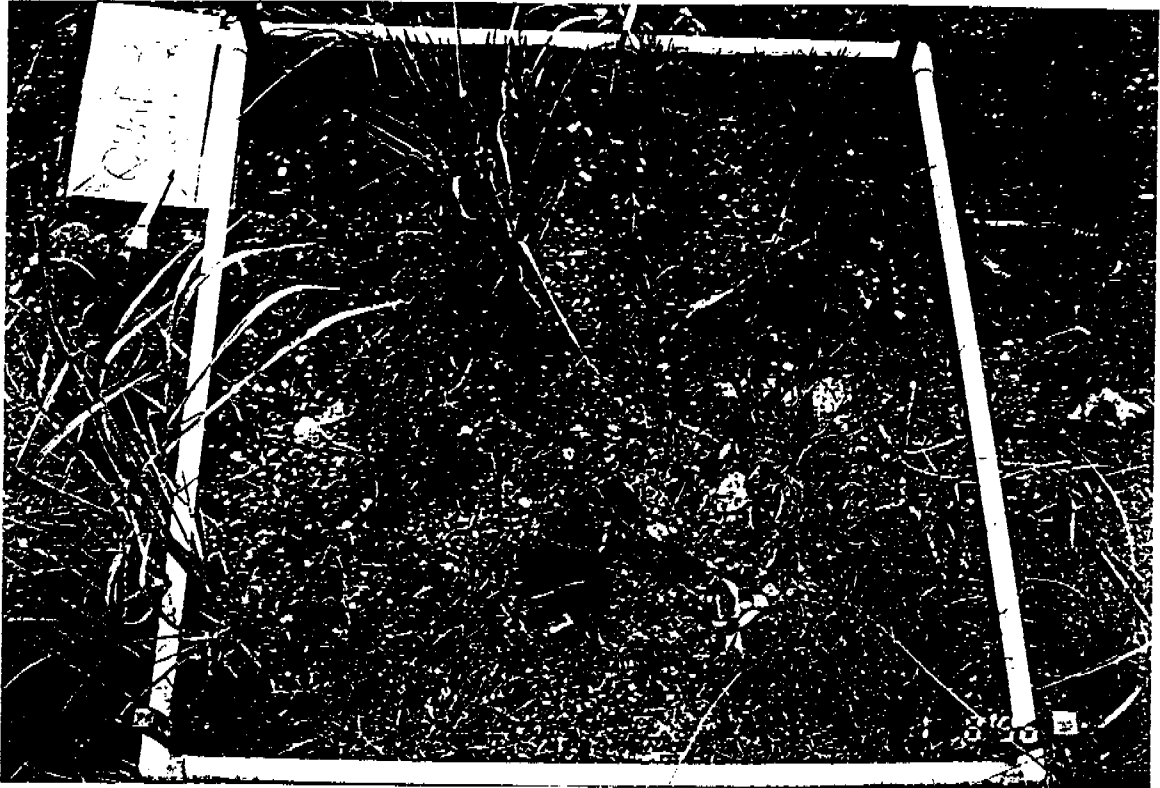
2/1/96



Percentage Cover Quadrat 1
8/1/96



Percentage Cover Quadrat 2
8/1/96



Percentage Cover Quadrat 3
8/1/96



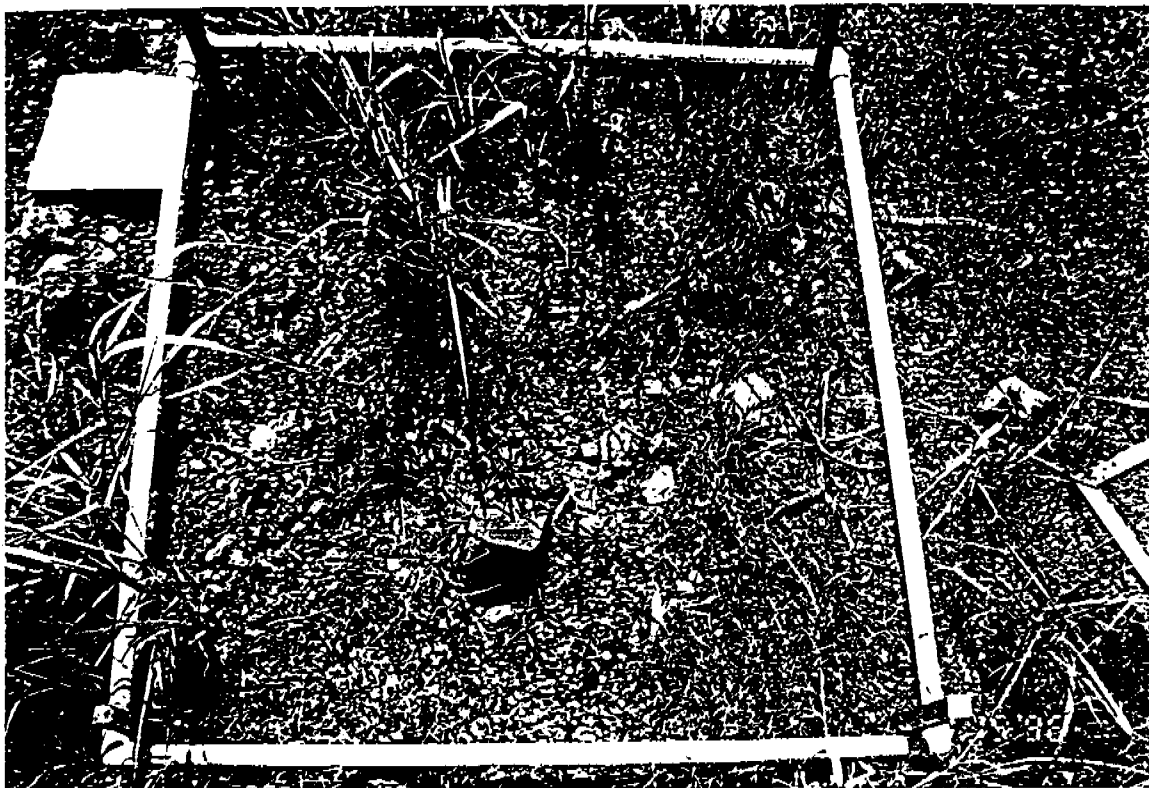
Percentage Cover Quadrat 4
8/1/96



Percentage Cover Quadrat 1
15/1/96



Percentage Cover Quadrat 2
15/1/96



Percentage Cover Quadrat 3
15/1/96



Percentage Cover Quadrat 4
15/1/96



Percentage Cover Quadrat 1
22/1/96



Percentage Cover Quadrat 2
22/1/96



Percentage Cover Quadrat 3
22/1/96



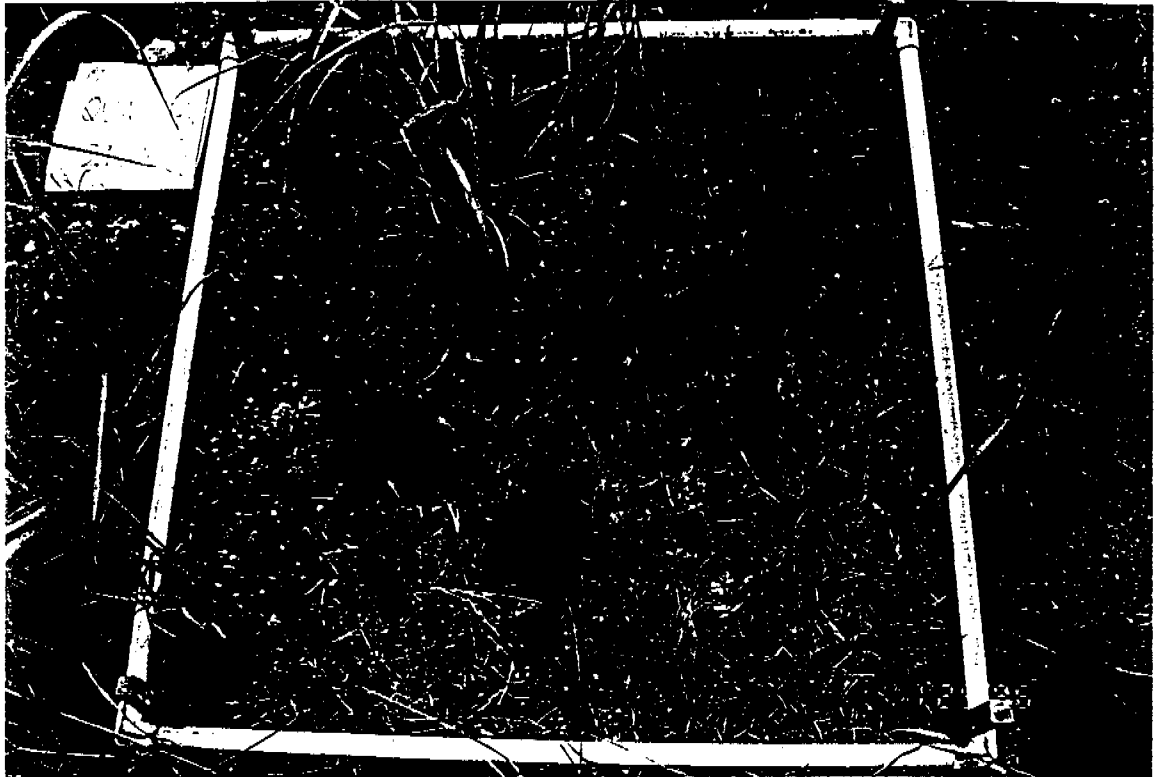
Percentage Cover Quadrat 4
22/1/96



Percentage Cover Quadrat 1
29/1/96



Percentage Cover Quadrat 2
29/1/96



Percentage Cover Quadrat 3
29/1/96



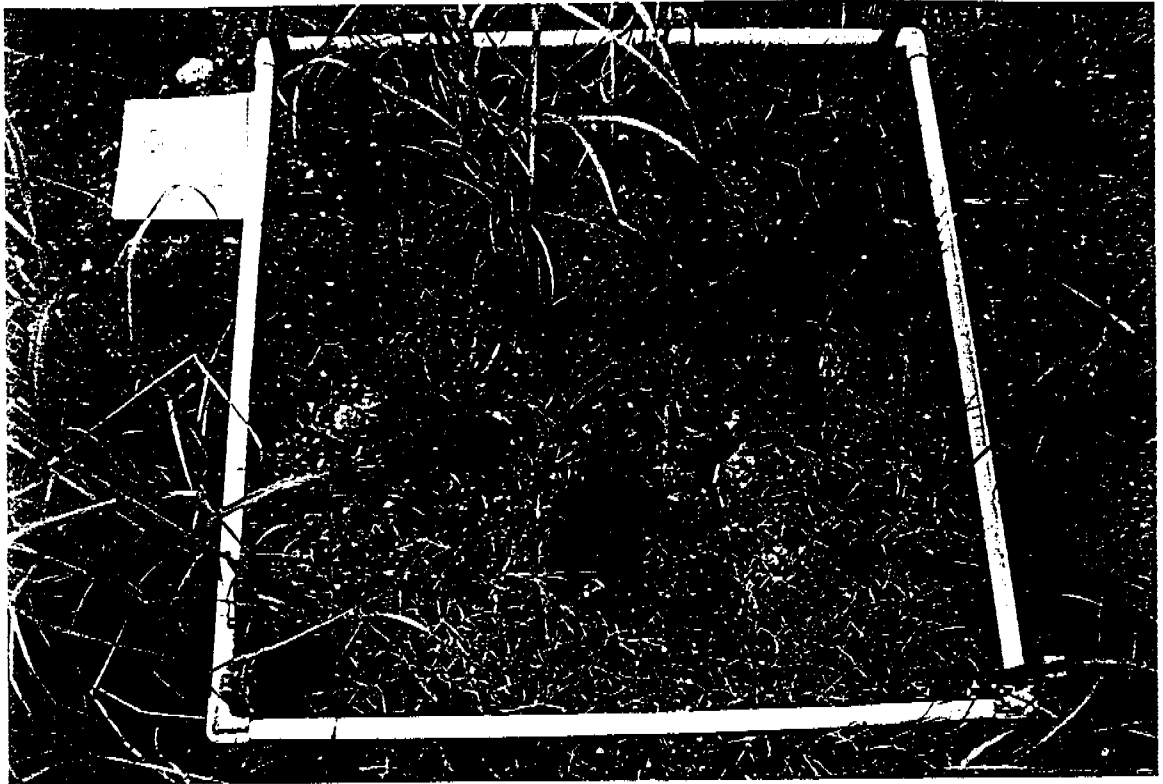
Percentage Cover Quadrat 4
29/1/96



Percentage Cover Quadrat 1
5/2/96



Percentage Cover Quadrat 2
5/2/96



Percentage Cover Quadrat 3
5/2/96



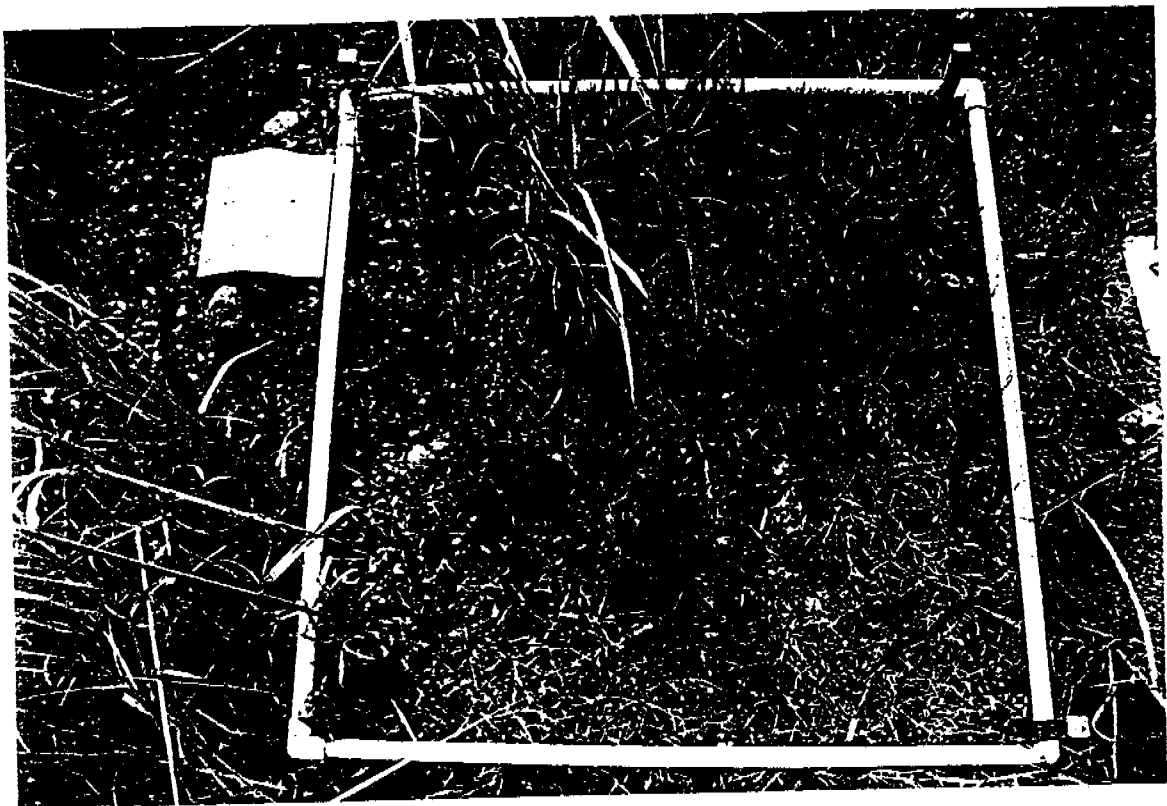
Percentage Cover Quadrat 4
5/2/96



Percentage Cover Quadrat 1
12/2/96



Percentage Cover Quadrat 2
12/2/96



Percentage Cover Quadrat 3
12/2/96



Percentage Cover Quadrat 4
12/2/96