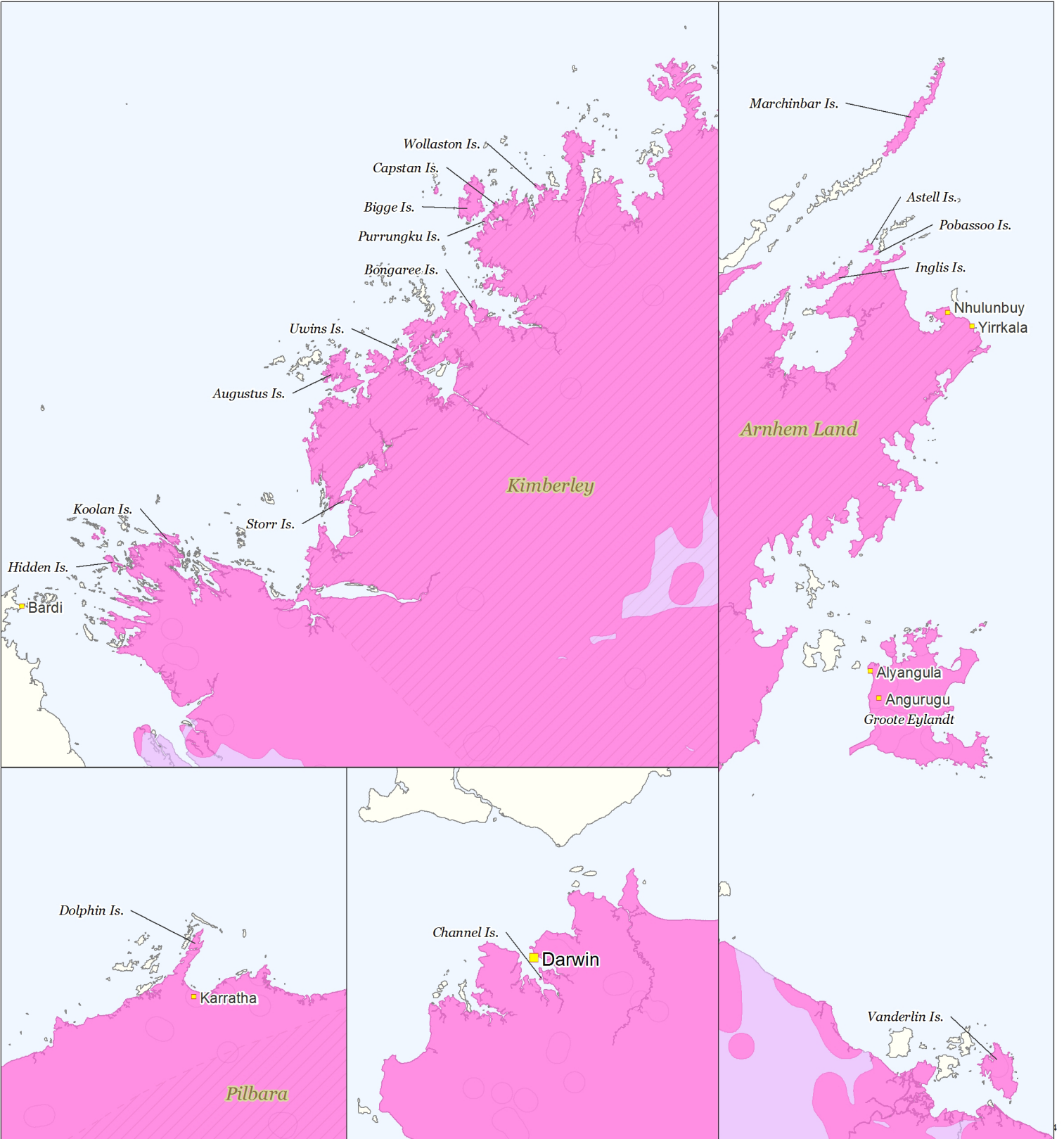
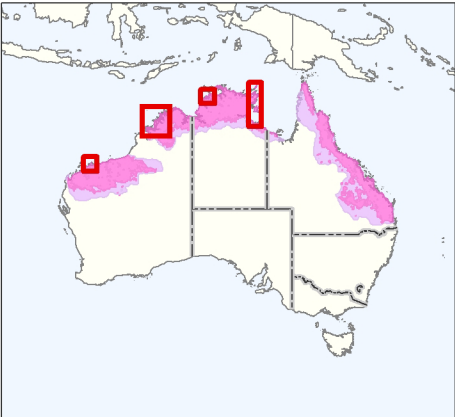



Map 5: Spatial distribution of the northern quoll (*Dasyurus hallucatus*) on islands in Western Australia and the Northern Territory



INDICATIVE MAP ONLY: For the latest departmental information, please refer to the Protected Matters Search Tool and the Species Profiles & Threats Database at <http://www.environment.gov.au/biodiversity/threatened/index.html>



0 30 60 90 120 150 km


Australian Government
Department of the Environment






Produced by: Environmental Resources Information Network (2014)

Contextual data source: Geoscience Australia (2006), Geodata Topo 250K Topographic Data

Indicative Map Only: This map has been compiled from datasets with a range of geographic scales and quality. Species distributions are indicative only and not to be used for local assessment. Local knowledge and information should be sought to confirm the presence of the species, or its habitat, at the location of interest.

Caveat: The information presented in this map has been provided by a range of groups and agencies. While every effort has been made to ensure accuracy and completeness, no guarantee is given, nor responsibility taken by the Commonwealth for errors or omissions, and the Commonwealth does not accept responsibility in respect of any information or advice given in relation to, or as a consequence of, anything containing herein.

Legend

-  Known/Likely to Occur
-  May Occur
-  Large Area Features
-  Cities & Towns
-  State Border