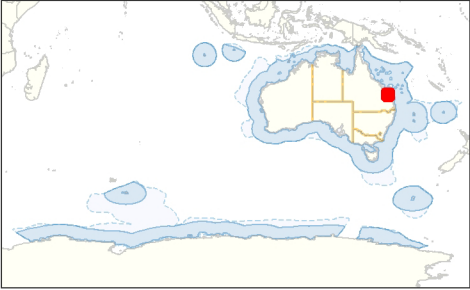
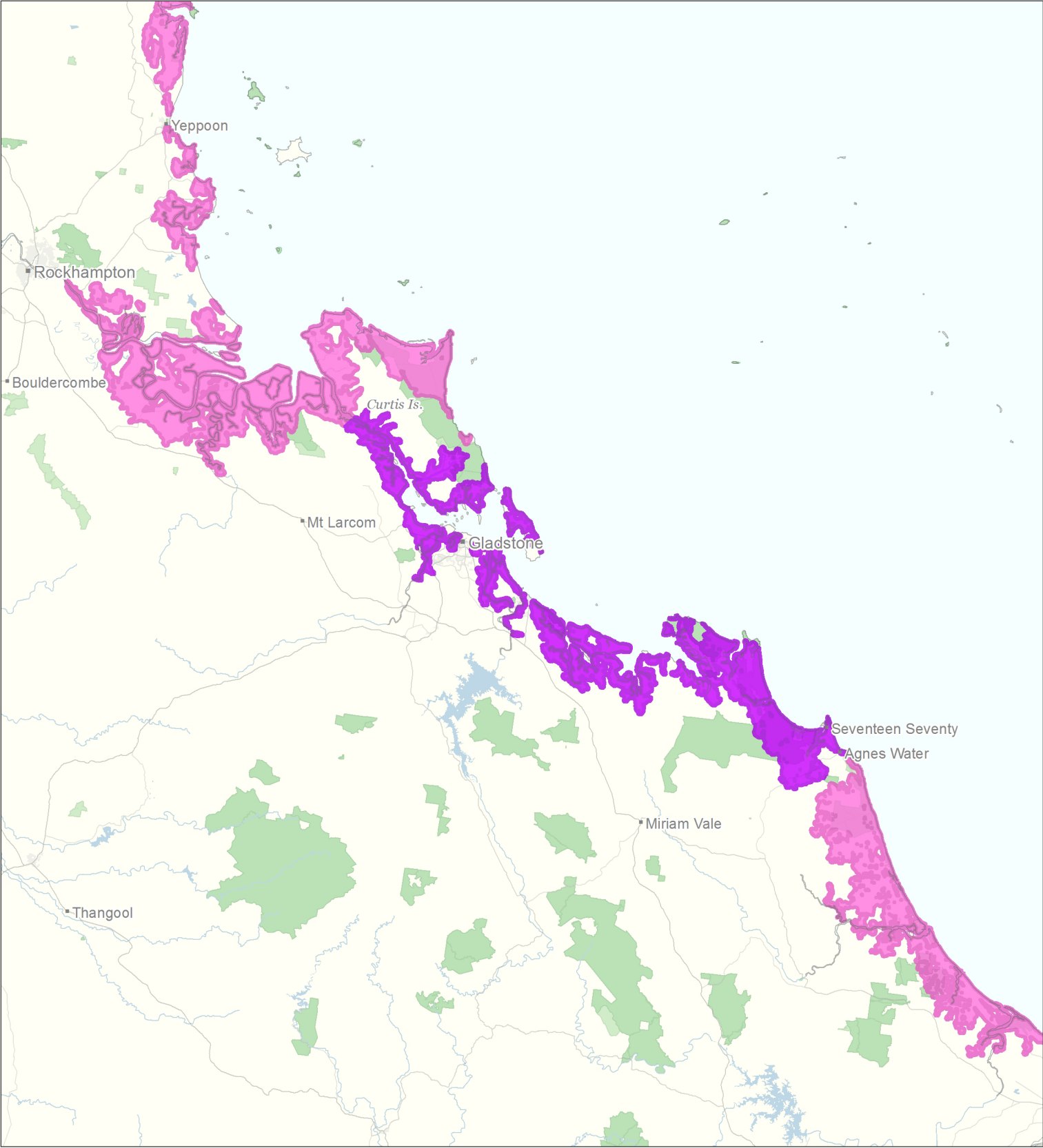
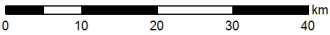


Indicative distribution of Water Mouse (*Xeromys myoides*) - Gladstone, QLD



Australian Government
Department of the Environment

© Copyright | Commonwealth of Australia, 2015.



Caveat: The information presented in this map has been provided by a range of groups and agencies. While every effort has been made to ensure accuracy and completeness, no guarantee is given, nor responsibility taken by the Commonwealth for errors or omissions, and the Commonwealth does not accept responsibility in respect of any information or advice given in relation to, or as a consequence of, anything containing herein.

Contextual data sources:
Dept. of the Environment (2015), *Species of National Environmental Significance Database*
Dept. of the Environment (2012), *Collaborative Aust. Protected Areas Database*
Geoscience Australia (2006), *GEODATA TOPO 250K Series 3*
Geoscience Australia (2006), *Aust. Maritime Boundaries*

Legend

- Known to Occur
- Likely to Occur
- May Occur
- Cities & Towns
- Roads
- State Border
- Protected Areas**
 - Nature Reserve and Wilderness Area (IUCN Ia and Ib)
 - National Park and Habitat Protection (IUCN II, III and IV)
 - Protected Landscape and Sustainable Use (IUCN V and VI)
 - Conservation Area