

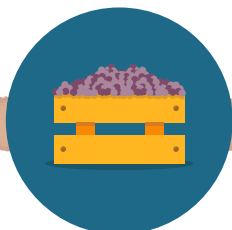
From grape to glass

Where NTMs are applied in the export of Shiraz to China



Vineyard

Vines are treated for pests and diseases as on farm best practice. **Testing for chemical Maximum Residue Limits** may occur.



Harvest

Biosecurity protocols include Phylloxera treatment for machinery to ensure it is pest free. This is a domestic requirement.



Transport

Grapes are not transported into areas where there is a fruit fly or Phylloxera risk. This is a domestic requirement.



Weighbridge (Transfer of grape ownership)

Grapes are sorted according to MRLs e.g. China does not allow Phosphorous acid.



Processing

All additives comply with China's importing country requirements, and audit processes are in place to guarantee that variety and vintage are correct.



Bottling

The label complies with China's requirements such as being auditable by the Australian Grape and Wine Authority (AGWA) to be true to label.



Transport

Shiraz is transported to China with an export certificate provided by AGWA.



Inspection in country

Shiraz is tested for MRLs, additives and label compliances.



Retailer

Private standards exist in China such as quality and vintage assurance, which go above government importing requirements.



Consumer

A delicious Australian Shiraz is available in China.