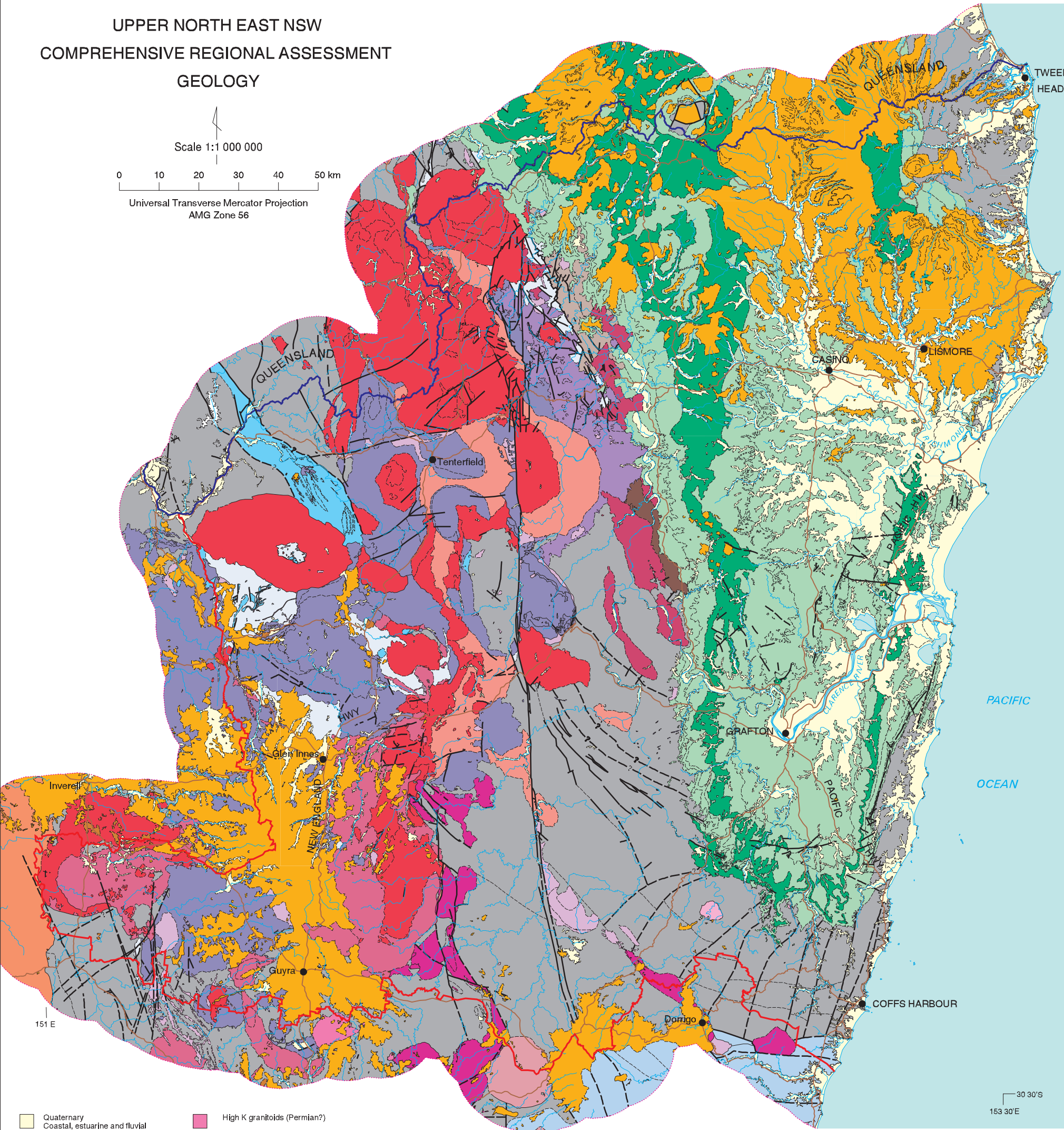
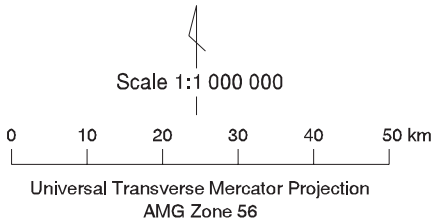


UPPER NORTH EAST NSW

COMPREHENSIVE REGIONAL ASSESSMENT

GEOLOGY



- Quaternary
Coastal, estuarine and fluvial
sediments

Tertiary volcanics
Mainly basaltic volcanics

Tertiary sediments. Remnants
of Tertiary land surface, commonly
preserved beneath basalts

Clarence-Moreton Basin
(Late Triassic - Cretaceous)
Large Intracontinental
sedimentary basin

Coal Measures: Nymboida, Walloon

Late Permian volcanics

Wandsworth Volcanic Group

Drake Volcanics

New England batholith

Coastal belt (Early Triassic)
Undifferentiated granitoids

Gundee belt (Early Triassic)
Undifferentiated granitoids

Leucogranitoids
(Late Permian - Early Triassic)
Highly fractionated granitoids

Moonbi Plutonic Suite
(Late Permian - Early Triassic)
High K granitoids

Clarence River Plutonic Suite
(Late Permian - Early Triassic)
Primitive high-Ca granitoids

Uralla Plutonic Suite
(Late Permian)
Mixed I-S - type granitoids

High K granitoids (Permian?)

Bundarra Plutonic Suite
(Early Permian)
S-type largely undeformed
leucocratic granitoids

Hillgrove Plutonic Suite
(Late Carboniferous)
S-type, foliated granitoids

Unclassified plutonic rocks
(Permian to Triassic)

Permian basins
(Early - middle Permian)
Conglomeratic wedges in
older accretionary prism rocks

Permian sediments. Relatively
undeformed sediments pre-dating
Late Permian volcanism and
plutonism

Nambucca Block
(Early Permian)
Structural block showing a distinct
metamorphic and structural history.
Mainly phyllite, some metabasalt

Accretionary complex
(Late Carboniferous and older).
Complexly deformed, dismembered
oceanic rocks comprising mudstone,
siltstone, chert and metabasalt
also limestone and sedimentary wedges
of continental derivation

Emu Creek Block
(Late Carboniferous)
Relatively undeformed sedimentary
sequence with substantial volcanic
component

Serpentine
(Latest activation, ?Permian)
Gordonbrook Serpentine belt

Geological boundary, position accurate

Geological boundary, position approximate

Geological boundary, position inferred

Fault, position accurate

Fault, position approximate

Fault, position inferred

Fault, position concealed

Fault, position inferred concealed

Boundary of Upper North East Region

State border

River

Major road
- MAP LOCALITY

NEW SOUTH WALES

SYDNEY
- AGSO

AUSTRALIAN
GEOLOGICAL SURVEY
ORGANISATION

MINERAL
RESOURCES
NEW SOUTH WALES
- Compiled from 1:250 000 scale digital geological data
provided by the Geological Survey of NSW, Armidale office
Basemap data from AUSLIG Geodata

June 1998

mrune5ge.aml 08-NOV-2000