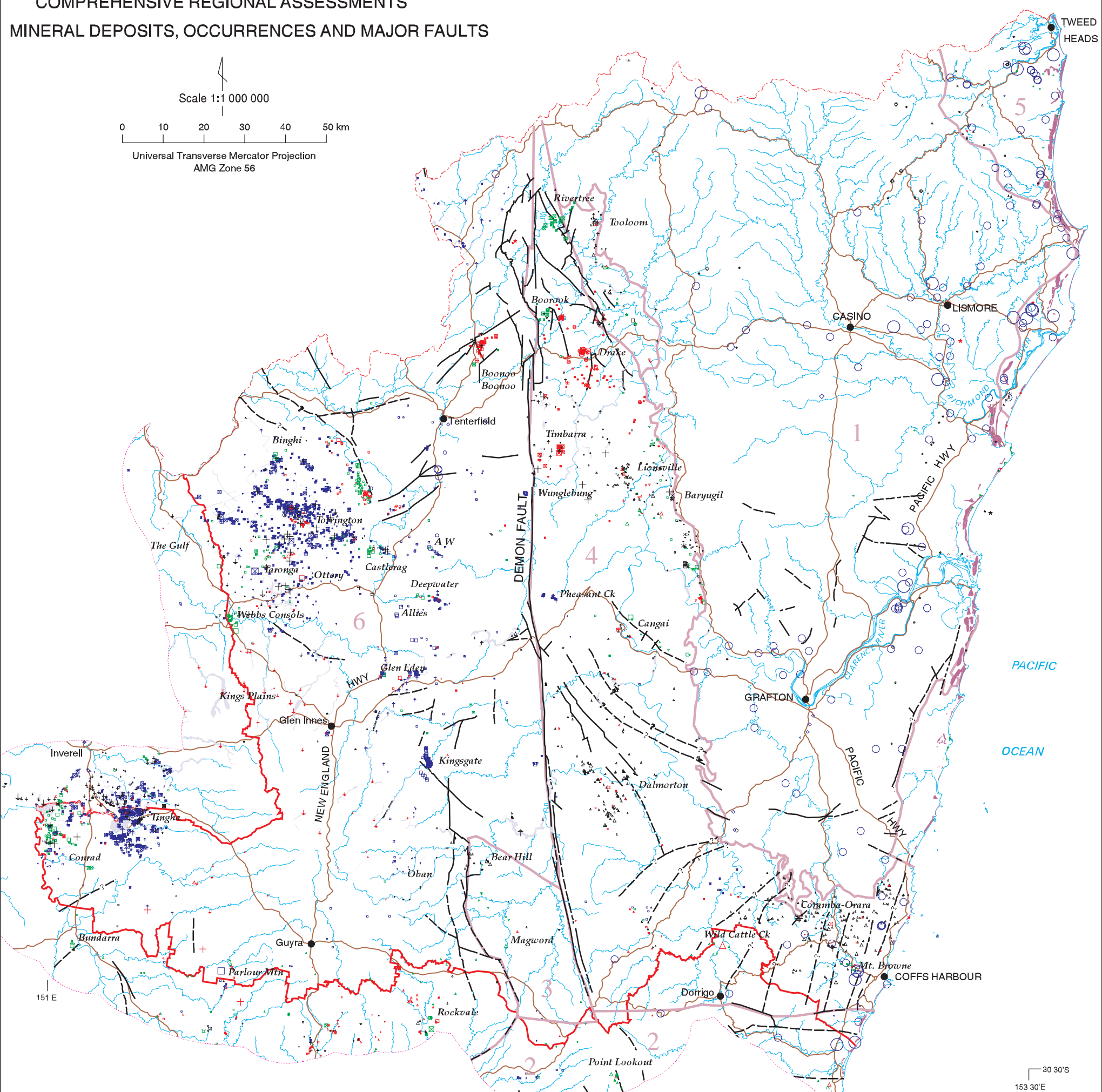
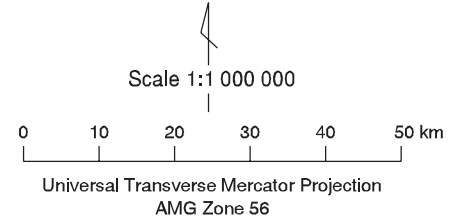
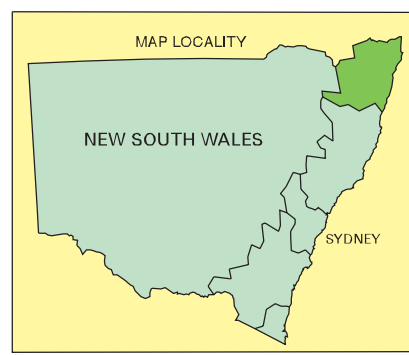


UPPER NORTH EAST REGION COMPREHENSIVE REGIONAL ASSESSMENTS MINERAL DEPOSITS, OCCURRENCES AND MAJOR FAULTS



- Stratigraphically controlled deposits in pre - Late Permian sediments and volcanics
 - Cu, Pb, Zn, pyrite in basalt, chert, metasediment or schist
 - Mn lenses and horizons (also residual Mn)
 - Au in cherts
 - Silica chert
 - Limestone
- Serpentinite-related deposits
 - Cr in serpentinite
 - Cu in serpentinite
 - Asbestos deposits in ultramafic rocks
- Deposits related to Permian volcanic and sedimentary rocks
 - Base metal, Au, Ag epithermal deposits in felsic volcanic rocks
 - Graphite
- Granite-related mineralisation
 - Mo-enriched granitic deposits
 - Sn-enriched granitic deposits
 - W-enriched granitic deposits
 - As-enriched granitic deposits
 - Pb, Zn, Cu-enriched granitic deposits
 - Fe (magnetite) skarn deposits
 - Ag-enriched granitic deposits
 - Au disseminated in granite
 - Au vein in granitic rocks
 - Silicite-topaz deposits
 - Silica pipes and veins in granite
 - Quartz crystal occurrences
- Metahydrothermal veins - granitic association not established
 - Au quartz veins
 - Au, Sb, W veins
 - Sb veins
 - Au, Ag veins
 - Pb, Zn, Cu veins
 - Hg veins
 - Clarence - Moreton Basin resources
 - Coal mine localities
 - Brick clays
 - Tertiary volcanic rock related
 - Perlite
 - Diatomite
 - Tertiary and Quaternary sediment - related
 - Au - 'rich' placer
 - Au - 'rich' deep lead
 - Au - 'rich' palaeoplacer
 - Sn - 'rich' placer
 - Sapphire - 'rich' placer
 - Heavy mineral sands deposit (Ti, Zr)
 - Heavy mineral sands deposit with gold or platinum
 - Industrial sand
 - Kaolin
 - Peat
 - Decorative aggregate
 - Other industrial mineral deposits
- OTHER
 - Large construction material deposits
 - Heavy Mineral Sands
 - Placer deposits
- STRUCTURAL BLOCKS
 - 1 Clarence Moreton Basin
 - 2 Nambucca Block
 - 3 Dyamantina Block
 - 4 Coffs Harbour Block
 - 5 Beenleigh Block
 - 6 Woolomin-Texas or Central Block
 - 7 Emu Creek Block
- Oban Mineral field or mine name

- State border
- Upper North-East CRA
- Structural unit boundary
- Fault, position accurate
- Fault, position approximate
- Fault, inferred



Compiled from 1:250 000 scale digital geological data provided by the Geological Survey of NSW, Armidale office
Basemap data from AUSLIG Geodata

June 1998