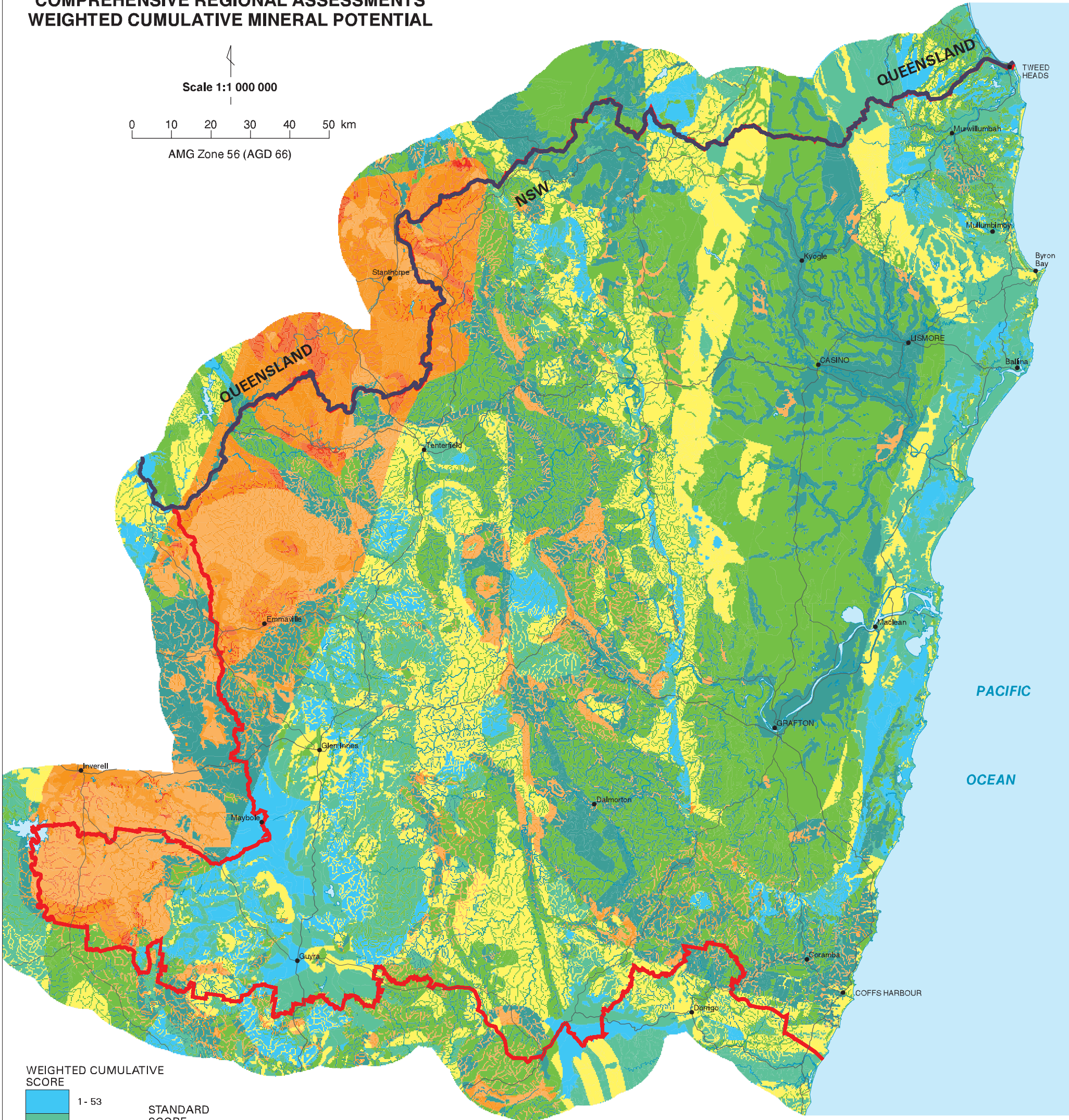
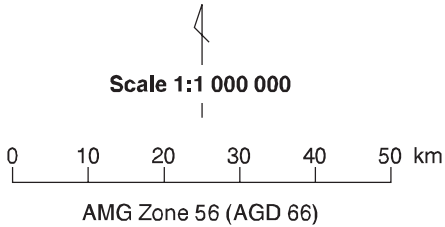
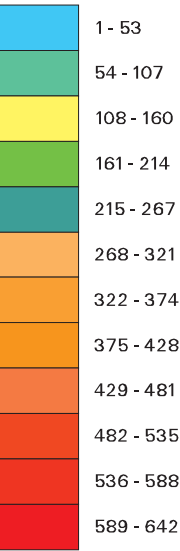


UPPER NORTH EAST
COMPREHENSIVE REGIONAL ASSESSMENTS
WEIGHTED CUMULATIVE MINERAL POTENTIAL

MAP 6



WEIGHTED CUMULATIVE
SCORE



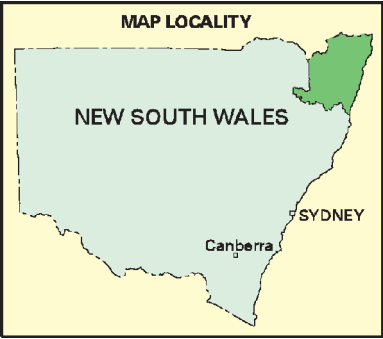
STANDARD
SCORE

1	Low
2	Low to Moderate
6	Moderate
12	Moderate to High
18	High



Unknown

- Towns
- Boundary of Upper North East RFA region
- State border
- Rivers
- Roads
- Water bodies



Weighted Cumulative Mineral Potential map is a collation of mineral potential tracts of 29 deposit types (Figures 3 to 31). It represents the sum of the weighted levels of mineral potential assessed (in August 1998) for deposit types for any particular area in the Upper North East NSW CRA Region. Every deposit type is assigned a score on a scale of 1 to 10 by a panel which reflects the relative importance of deposit types. For the weightings of individual deposit types see the Minerals Technical Report.

Compiled from 1:250 000 scale digital data provided by the Geological Survey of New South Wales, Armidale office. Basemap data from AUSLIG Geodata. Assessments will require periodical revision as new data and knowledge become available.