

NATIONAL ESTATE : HISTORIC VALUES

**QUEENSLAND CRA/RFA STEERING
COMMITTEE**

NATIONAL ESTATE : HISTORIC VALUES

Forest Assessment Unit

**QUEENSLAND DEPARTMENT OF
ENVIRONMENT**

QUEENSLAND CRA/RFA STEERING COMMITTEE

For more information contact:**Regional Forest Assessments, Department of Natural Resources**

Block C, 80 Meiers Road
INDOOROPILLY QLD 4068

phone: 07 3896 9836

fax: 07 3896 9858

Forests Taskforce, Department of Prime Minister and Cabinet

3-5 National Circuit
BARTON ACT 2600

phone: 02 6271 5181

fax: 02 6271 5511

© Queensland Government 1998© Commonwealth of Australia 1998

Forests Taskforce Department of Prime Minister and Cabinet

This work is copyright. Apart from fair dealing for the purpose of private study, research, criticism or review as permitted under the Copyright Act 1968, no part of this document may be reproduced by any means without the joint permission from the Joint Commonwealth and Queensland RFA Steering Committee.

This project has been jointly funded by the Queensland and Commonwealth Governments. The work undertaken within this project has been managed by the joint Queensland / Commonwealth CRA RFA Steering Committee and overseen by the Environment and Heritage Technical Committee.

Disclaimer

The views and opinions expressed in this report are those of the author and do not necessarily reflect the views of the Queensland and Commonwealth governments. The Queensland and Commonwealth governments do not accept responsibility for any advice or information in relation to this material.

ACKNOWLEDGEMENTS

In undertaking the work outlined in this report, the Forest Assessment Unit Historic project team is indebted to the following for their time, knowledge, interest and assistance during the project:

Department of Environment officers
Department of Natural Resources officers
Department of Primary Industries (Forestry) officers
Local Historians
Local Museums
Local communities
Cultural Heritage Focus Group

A list of all those individuals who assisted with research, oral history and/or field work is included in Appendix 1. Members of the Cultural Heritage Focus Group are listed in Appendix 6.

The Forest Assessment Unit Historic team of Fiona Botham, Cheryl Woodman, Sarah Lewis and John Schiavo would especially like to thank Margaret Kowald, Annabelle Stewart-Zerba and Judy Powell of the Forest Assessment Unit, for their guidance, advice and support during this project.

The Forest Assessment Unit Historic team would also like to acknowledge the support provided by the Commonwealth through the Forests Taskforce, Environment Australia. In particular, the team thanks Sandy Blair and Marilyn Truscott for their guidance during this project.

CONTENTS

Acknowledgements	v
CONTENTS	vii
EXECUTIVE SUMMARY	1
1. CHAPTER ONE INTRODUCTION	3
1.1 introduction.....	3
1.1.1 Background to Project.....	3
1.1.2 Scope of Project	4
1.1.3 Related Projects.....	6
1.1.4 Study team	6
1.2 methodology	7
1.2.1 Project Methodology.....	7
2. CHAPTER TWO -CONDUCT OF STUDY	9
2.1 previous research	9
2.2 cra research	10
CRA projects.....	10
2.3 Identification and Field Recording of Places.....	12
2.4 Assessment of cultural heritage significance	14
2.5 Limitations.....	14
3. CHAPTER THREE - RESULTS	17
3.1 field recordING	17
3.2 Assessment of historic cultural heritage places	21
4. CHAPTER FOUR - CONCLUSIONS.....	24
4.1 conclusions.....	24
4.2 recommendations for further work.....	24
APPENDICES.....	26
APPENDIX 1.....	26
APPENDIX 2.....	30
Project Terms of Reference.....	30
APPENDIX 4.....	37
APPENDIX 6.....	49
APPENDIX 9.....	55
APPENDIX 10.....	107
APPENDIX 11	123
REFERENCES.....	133

ABBREVIATIONS.....	135
---------------------------	------------

LIST OF TABLES

table 3.1 Places recorded in the Inventory - location	17
table 3.2 places recorded in the inventory - group.....	19
table 3.3 results of historic values assessment workshops	22

LIST OF FIGURES

table 3.1 Places recorded in the Inventory - location	17
table 3.2 places recorded in the inventory - group.....	19
table 3.3 results of historic values assessment workshops	22

table 3.1 Places recorded in the Inventory - location	17
table 3.2 places recorded in the inventory - group.....	19
table 3.3 results of historic values assessment workshops	22

table 3.1 Places recorded in the Inventory - location	17
table 3.2 places recorded in the inventory - group.....	19
table 3.3 results of historic values assessment workshops	22

LIST OF APPENDICES

table 3.1 Places recorded in the Inventory - location	17
table 3.2 places recorded in the inventory - group.....	19
table 3.3 results of historic values assessment workshops	22

APPENDIX 2: PROJECT TERMS OF REFERENCE	31
---	-----------

table 3.1 Places recorded in the Inventory - location	17
table 3.2 places recorded in the inventory - group.....	19
table 3.3 results of historic values assessment workshops	22

table 3.1 Places recorded in the Inventory - location.....	17
table 3.2 places recorded in the inventory - group.....	19
table 3.3 results of historic values assessment workshops	22

table 3.1 Places recorded in the Inventory - location.....	17
table 3.2 places recorded in the inventory - group.....	19
table 3.3 results of historic values assessment workshops	22

table 3.1 Places recorded in the Inventory - location.....	17
table 3.2 places recorded in the inventory - group.....	19
table 3.3 results of historic values assessment workshops	22

table 3.1 Places recorded in the Inventory - location.....	17
table 3.2 places recorded in the inventory - group.....	19
table 3.3 results of historic values assessment workshops	22

table 3.1 Places recorded in the Inventory - location.....	17
table 3.2 places recorded in the inventory - group.....	19
table 3.3 results of historic values assessment workshops	22

table 3.1 Places recorded in the Inventory - location.....	17
table 3.2 places recorded in the inventory - group.....	19
table 3.3 results of historic values assessment workshops	22

EXECUTIVE SUMMARY

This report has been prepared for the joint Commonwealth/State Steering Committee which oversees the Comprehensive Regional Assessment (CRA) study phase of forests in the South East Queensland biogeographic region.

The Comprehensive Regional Assessment provides the scientific basis on which the State and Commonwealth governments will sign a Regional Forest Agreement (RFA) for the forests of the South East Queensland biogeographic region. This agreement will determine the future of the region's forests and will define those areas needed to form a comprehensive, adequate and representative (CAR) reserve system and those available for ecologically sustainable commercial use.

The National Estate Historic Values project (the "Historic project") was undertaken as part of a comprehensive regional assessment of the South East Queensland (SEQ) biogeographic region. The primary objectives of the Historic project were to record, assess, and threshold historic cultural heritage places in forested areas within the SEQ biogeographic region for potential listing in the Register of the National Estate (RNE). Places of cultural significance to Indigenous people were addressed as a separate project. The Historic project predominantly focused on public land in the SEQ biogeographic region, particularly State Forests and National Parks. Limited work was undertaken with regard to private forested lands.

This report outlines the methods by which the Historic project has been undertaken, and the results of this project. A Historic Places Inventory (the "inventory") of 830 places was recorded as a result of primary, secondary and oral research, and field survey.

There are six groups of places which together comprise approximately 75 per cent of the inventory. Forestry-related buildings and structures, including sawmills and tramways, make up a large number (41 per cent) of the places recorded in the inventory. An indication of the multiple use of forested areas is the high number of places representing recreation (11 per cent), farming and grazing (7 per cent), and mining and mineral processing (5 per cent) activities. A number of places were also recorded which comprise landscapes and trees (8 per cent), indicative of the overlap between natural and cultural heritage. The remaining 23 groups of places each comprise less than 5 per cent of the inventory.

Geographically, a number of areas within the SEQ biogeographic region stand out as areas which are important to the cultural heritage of forested areas within the region, including Lamington, Springbrook and Tamborine National Parks; the D'Aguilar Range; Crows Nest/Ravensbourne; the Bunya Mountains; the Yarraman district; the Beerwah/Beerburum district; the Mary Valley; the Great Sandy region including Cooloola and Fraser Island; Maryborough/Howard/Cordalba; and the Many Peaks/Calliope area.

Through a series of cultural heritage assessment workshops, held subsequent to the field survey phase, places and values on the inventory were assessed for significance against National Estate heritage criteria. Thresholding indicators were applied to determine whether places were of sufficient significance for consideration for inclusion in the Register of the National Estate for Historic values. Eighty nine (89) places were considered to be above threshold for potential National Estate Listing. A separate report contains the detailed

documentation for those places for potential National Estate listing. In certain instances, places recorded in the inventory which share a common history or context have been grouped as a complex or a cultural landscape. One hundred and eighty eight (188) places were significant as part of a National Estate complex. Eighty six (86) places were considered to be significant, but fell below the threshold for National Estate, whilst 15 places were considered not significant. Four hundred and fifty two (452) places were not able to be assessed, primarily due to lack of information to enable an assessment to be made.

The Historic project is one of a series of concurrent projects which investigated the cultural heritage values of forests as part of the CRA process. These related projects are the subjects of separate reports, and include a thematic history, a study of travel routes, forest towns and settlements, a study of sawmills and tramways, reports on social values and aesthetic values, and the development of a set of management guidelines.

The limitations of the Historic project and its results are set out in Section 2.5 of the report. Section 4.2 of the report presents a series of recommendations for further work which are aimed towards overcoming these limitations.

1. CHAPTER ONE

INTRODUCTION

1.1 INTRODUCTION

1.1.1 Background to Project

Under the National Forest Policy Statement (NFPS) Commonwealth, State and Territory governments agreed to a framework and process for carrying out comprehensive regional assessments (CRAs) of the economic, social, environmental and heritage values of forests (DNR 1998). Once completed, CRAs provide governments with the information required to make long term decisions about forest use and management, through negotiation of a Regional Forest Agreement (RFA).

The National Estate Historic Values project (the “Historic project”) was undertaken as part of a comprehensive regional assessment of the South East Queensland (SEQ) biogeographic region. The primary objectives of the Historic project were to record, assess, and threshold for potential listing in the Register of the National Estate (RNE), historic cultural heritage places in forested areas within the SEQ biogeographic region. Places of cultural significance to Indigenous people were addressed as a separate project.

Cultural heritage forest studies in the SEQ biogeographic region commenced in April 1995 as part of the *Greater Planning Certainty for Queensland’s Wood Products based on Crown Native Forests* project (GPC). Work undertaken during the GPC project included a draft historical overview of the SEQ biogeographic region with particular reference to forested areas, broadscale survey work, and a data audit to identify gaps in existing data regarding cultural heritage places in forests in the region. Over 130 places in State Forests were recorded as a result of the GPC project and these results were incorporated into this Historic project.

The Historic project and preparation of this report were undertaken by officers of the Forest Assessment Unit (FAU), Conservation Strategy Branch in the Queensland Department of Environment (DoE) (see 1.1.4).

1.1.2 Scope of Project

Prior to this project, the cultural heritage of SEQ forested areas was largely undocumented. The Historic project has therefore focused on broadscale survey work across the region to record and document places in forested areas in the SEQ biogeographic region, and the compilation of a Historic Places Inventory (the “inventory”).

A cultural heritage *place* can be a site, area, landscape, building/structure, group of buildings/structures or other works together with associated contents and surroundings that is significant for its historic, social, aesthetic or scientific value. The value of a cultural heritage place is usually determined by assessment against a set of significance criteria. In the forest environment these values can be expressed, for example, through the tangible fabric of an archaeological or historic site, intangibly through spiritual associations with particular places, or a landscape with a combination of tangible and intangible elements. The focus of this project was upon places of historic value.

The range of places to be recorded during this project was broad, and included any place or site where people have carried out some activity in a forested area, whether that activity was directly, or indirectly, related to forests. An “indicative list”, developed during the GPC project, of places which might exist in forested areas included: bridges, buildings, bullock wagons, cemeteries, charcoal pits, defence/war relics, ethnic settlement camps, explorers’ routes/marked trees, fences, fire towers, forestry barracks/camps, machinery, mines, railways, sawmills, tramways, and workers’ camps. Classification of this list was aided by the incorporation of the groups, categories and themes developed by the Australian Heritage Commission (AHC) into the recording process.

Study Area

As Figure 1.1 indicates, the SEQ biogeographic region covers approximately 6.2 million hectares and extends from the New South Wales - Queensland border, north to Gladstone, and west to Toowoomba and the Great Dividing Range (DNR 1998). The total forested and wooded area within the SEQ biogeographic region is approximately 2.6 million hectares (FAU, DoE). Young (in Sattler and Williams, 1998 in preparation) describes the major physiographical features of the SEQ biogeographic region as including a coastal plain of varying width, hills and ranges, the major drainage basins of the Brisbane and Mary Rivers, Barambah Creek, the lower Burnett River and coastal mainland and island sandmasses.

The Region has a diverse range of land uses including urban, rural and agricultural areas. Major urban centres in the SEQ biogeographic region include Brisbane, Ipswich, Toowoomba, Gold Coast, Sunshine Coast, Logan, Nambour, Gympie, Kingaroy, Maryborough - Hervey Bay, Gladstone and Bundaberg (Young 1998). The Study Area includes 244 State Forests and Timber Reserves (FAU, DoE) and 147 National Parks and Conservation Parks (FAU, DoE).

The Historic project predominantly focused on public land in the SEQ biogeographic region, particularly State Forests and National Parks.

1.1.3 Related Projects

The Historic project is one of a series of concurrent projects which investigated the cultural heritage values of forests as part of the CRA process. These related projects are outlined below, and are the subjects of separate reports.

Thematic History

A thematic history of the SEQ biogeographic region, with particular reference to forested areas, has been written (Powell 1998a). Based largely on secondary material, this thematic history employs the Principal Australian Historic Themes as outlined by the AHC.

Travel Routes, Forest Towns and Settlements

This project identifies forest towns and settlements associated with forestry and timber industries in the SEQ biogeographic region, and discusses travel routes associated with these industries in the SEQ biogeographic region (Powell 1998b).

Sawmills and Tramways

This project provides a historical overview of sawmilling, an inventory of sawmills and tramways and field documentation of selected sawmills and tramways in the SEQ biogeographic region (Kerr 1998).

Social values

Thirteen workshops were held throughout the SEQ biogeographic region to identify places valued by local communities (FAU 1998c). Using the methods employed in other states, and based on quantitative information obtained during the workshops, assessments were undertaken to determine those places which were above threshold for National Estate social significance.

Aesthetic values

A series of projects focussing on art, photography and film, literature and music, tourism publications, and incorporating data from the 13 community workshops identified places of aesthetic value (Lennon and Townsley 1998).

Management Guidelines

A comprehensive overview of the legislative framework for the conservation of cultural heritage places and values (Indigenous and non-Indigenous) in forested areas of the SEQ biogeographic region has been undertaken (Lennon and Associates 1998, in preparation). A set of conservation principles and guidelines will be developed for the protection and management of non-Indigenous cultural heritage places and values in forests in the region.

1.1.4 Study team

The Historic project was managed by Dr Margaret Kowald, Forest Assessment Unit, Conservation Strategy Branch, DoE, and Dr Sandy Blair (to August 1997) and

Marilyn Truscott (from September 1997), Environment Australia. The study team for the Historic project comprised the following officers of the Forest Assessment Unit, DoE:

Fiona Botham (Senior Conservation Officer)
John Schiavo (Technical Officer)

Cheryl Woodman (Conservation Officer)
Sarah Lewis (Technical Officer)

1.2 METHODOLOGY

1.2.1 Project Methodology

The methodology for the Historic project was based on the project Terms of Reference (Appendix 2) and is as follows:

Research (see also 2.1 and 2.2)

- Written records:
 - local and regional published and unpublished history sources in University, government and local libraries
 - archival files and maps at Department of Natural Resources (DNR), Department of Environment (DoE), Department of Primary Industries (DPI) (Forestry) and Queensland State Archives
 - Private and company archives
- Photographs:
 - photographic collections at John Oxley Library, DPI (Forestry) Library, DoE Photographic Library
 - private photographic collections
- Maps:
 - DPI (Forestry), DNR and DoE
- Heritage Registers:
 - Register of the National Estate (RNE)
 - Queensland Heritage Register (QHR)
- Oral interviews:
 - current and retired foresters
 - National Parks rangers
 - local residents
- Community heritage workshops:
 - historical data about places from the 13 community workshops

Field survey (see also 2.3)

- Field surveys to identify and assess historic cultural heritage places with focus on public land ie. State Forests and National Parks. Data collection including the use of Global Positioning System (GPS) recorders and cameras.

Assessment (see also 2.4)

- Assessment of places and values against National Estate and State heritage criteria and production of documentation to allow for interim listing on the RNE.

Appendix 3 lists the criteria for inclusion in the RNE and the QHR. Appendix 4 sets out the threshold indicators developed by the AHC to determine whether a place is of sufficient significance for inclusion in the RNE.

Data collation and presentation

- Data entered into Microsoft Access Database
- Geographic Information System (GIS) to produce a cultural heritage GIS layer showing areas of historic significance.

These aspects are detailed in the next chapter.

2. CHAPTER TWO - CONDUCT OF STUDY

2.1 PREVIOUS RESEARCH

Data Audit

The GPC work provided a starting point for the Historic project, in particular, a Cultural Heritage Data Audit which was completed in 1995 (Jenkins 1995). The aim of the Data Audit was twofold: to identify the main sources of information on cultural places in forested areas in the region; and to provide a preliminary assessment of the number, type and location of cultural places in the study area and their relationship to forests. An analysis of those cultural places, themes and related data not represented, or under represented, in the resources, was also undertaken. The Data Audit process identified locational information for 164 places (Indigenous and non-Indigenous) in the SEQ biogeographic region.

Reports and Studies

A range of cultural heritage studies and reports relating to SEQ have been completed in recent years. Stages 1 and 2 of a Mining Heritage Places Study, undertaken by Dr Ruth Kerr (1992) and Dr Michael Pearson (1994) respectively, provide detailed information on mining places in the SEQ biogeographic region. Stage 1 of the SEQ 2001 Cultural Heritage Places Study (Uniquist 1996) provides the first large-scale investigation of the development of the SEQ 2001 region (this covers a smaller area than does the SEQ biogeographic region). Studies which focus on a particular place or topic such as the Mill Point Conservation Plan prepared by Anne Hibbard and Dr Eleanor Crosby (1991), the cultural heritage assessment of Postan's Logging Camp on Fraser Island (1993) by Karen Townrow *et al*, and university studies of, for example, Daisy Hill (Anderson *et al* 1995a), Bunyaville (Anderson *et al* 1995b) and Mt Mee (Luxford 1995) State Forests, also provide much useful information.

Heritage Registers

The RNE and the QHR were searched for places presently entered in these registers, which are situated in a State Forest/Timber Reserve, a National Park/Conservation Park or other forested area. These register searches followed the boundaries of the SEQ biogeographic region as closely as possible. The QHR however, is arranged according to Local Government areas, and those Local Governments along the western and northern boundary of the SEQ biogeographic region generally extend across into the adjacent biogeographic region. No attempt was made to split the Local Government areas which extend across the

SEQ biogeographic region boundary as, for this project, it was considered that the relatively small number of places within those Local Government areas is of minor importance.

Within the SEQ biogeographic region there are 114 natural and 418 historic places, either entered into, or on the interim list of, the RNE. Over half of these natural places comprise National Parks or Environmental Parks. The majority of historic places are situated within the major urban centres of Brisbane, Ipswich, Toowoomba, Gympie, Maryborough, Bundaberg and Gladstone.

As of November 1997 there were 679 places either permanently or provisionally entered in the QHR within the SEQ biogeographic region. Similar to the RNE, the main concentrations of these places are within the major urban centres. Less than 10 per cent of these places appear to be located in a forested area.

Registers maintained by Local Governments and the National Trust of Queensland were not consulted during this project.

2.2 CRA RESEARCH

CRA projects

The progressive results of studies and projects commissioned under the CRA process, in particular the projects to record and assess thematic history, travel routes, forest towns and settlements, sawmills and tramways, social values, and aesthetic values, provided much useful contextual and place information to the Historic project. The thematic history has been undertaken simultaneously with the Historic project and there has been considerable interaction between the two projects; the former providing much contextual information for the latter.

Published and Unpublished sources

Published and unpublished information sources had, for the most part, already been reviewed during the data audit. Published material proved more useful for historical context rather than as a source of detailed place information. Exceptions existed where a specific area or place was the subject of a published or unpublished work, for example, Rollo Petrie's *Early Days on Fraser Island* (1995).

Government sources

Information from Government sources such as Annual Reports and Departmental files proved very useful both in terms of providing historical context and site specific information. The timelines for the field component of the project did not permit extensive examination of Forestry Department files, many of which are located in Forestry District offices. However, management plans for State Forests prepared by DPI (Forestry), and public contact plans prepared by Queensland National Parks and Wildlife Service (QNPWS), were valuable sources of information.

Private and company archives

Archives and files maintained by private individuals and companies were useful sources of historical and site specific information. For example, the archives of Binna Burra Mountain Lodge and O'Reilly's Mountain Guesthouse provided information additional to Government sources.

Maps

Because of the lack of documented locational information on cultural heritage places in forested areas, maps have been critical to the Historic project. Of particular value were the 1:50 000 scale maps prepared by the Forestry Department, although coverage of the SEQ biogeographic region is not complete. Unfortunately these maps are no longer being produced. Other useful maps include topographic maps (used as the basis for manual recording of places), maps of individual State Forests, military maps, National Parks plans, historic maps and tourist maps.

Photographs

An extensive photographic collection held in the DPI (Forestry) Library provides a valuable visual historical record of Forestry places. This allowed visual comparisons to be made of these places over time and provided useful historical information about the places. The John Oxley Library photographic collection was also accessed. In addition to these public collections, private photographic collections provided an extremely useful record of places in forested areas. The owners of these photographs allowed them to be copied for this project. Appendix 5 includes a copy of the form used by the study team when borrowing printed material and photographs from private collections.

Oral sources

Much useful information has been obtained from oral sources, and the recording of oral histories has been part of the research process. Discussions, both in the office and in the field, with past and present DPI (Forestry), DNR and QNPWS officers provided a vital, and often the only, source of information concerning individual places in forested areas. Oral interviews with private individuals, such as families who have lived in an area for a number of generations, also provided valuable information about cultural heritage places. Appendix 1 includes a list of the people (as outlined above) contacted during the project as sources of historical or other information. Appendix 5 includes a copy of the form used by the study team when recording oral history information.

Community heritage workshops

Thirteen community workshops were held throughout the SEQ biogeographic region during the study period. These provided much useful information about places valued by communities, particularly the historic, social and aesthetic values of those places. Information derived from the workshops was incorporated into a database developed to record information about cultural heritage places.

2.3 IDENTIFICATION AND FIELD RECORDING OF PLACES

On the basis of research information, follow up field work was undertaken in the SEQ biogeographic region to locate and record places. Due to the limited amount of information regarding cultural heritage places in forested areas, a sampling strategy was not applied. Rather, the research and field work phases sought to maximise the number of places recorded in the region within the time available. It is difficult to know how many places are still unrecorded, however it is considered that a significant number of places were recorded. This information may be used as a baseline for further study and assessment.

Forestry Districts

The DPI Forest Service ceased to exist on 30 June 1995. The functions of the former Forest Service were subsequently divided between DPI (Forestry) and DNR. For the purposes of the Historic project, the area was studied on the basis of Forestry Districts as administered by DPI (Forestry) (see Figure 2.1). The main reason for choosing this approach is that although the boundaries for these districts have altered over time, the districts have provided the basis for administration of State Forests and consequently form the basis for Forestry Department archival records. There are seven Forestry Districts either wholly or partly contained within the SEQ biogeographic region: Beerburrum, Dalby, Imbil, Maryborough, Monto, Yarraman and Rockhampton. The former Forestry Districts of Brisbane and Gympie have been absorbed into the Beerburrum and Maryborough Forestry Districts respectively.

Field work to identify and record historic cultural heritage places in the SEQ biogeographic region occurred between March and November 1997. The study team worked as two field teams during this time: one team worked in the Beerburrum, Dalby and Yarraman Forestry Districts (Cheryl Woodman and Sarah Lewis), while the other worked in the Imbil, Maryborough and Monto Forestry Districts (Fiona Botham and John Schiavo).

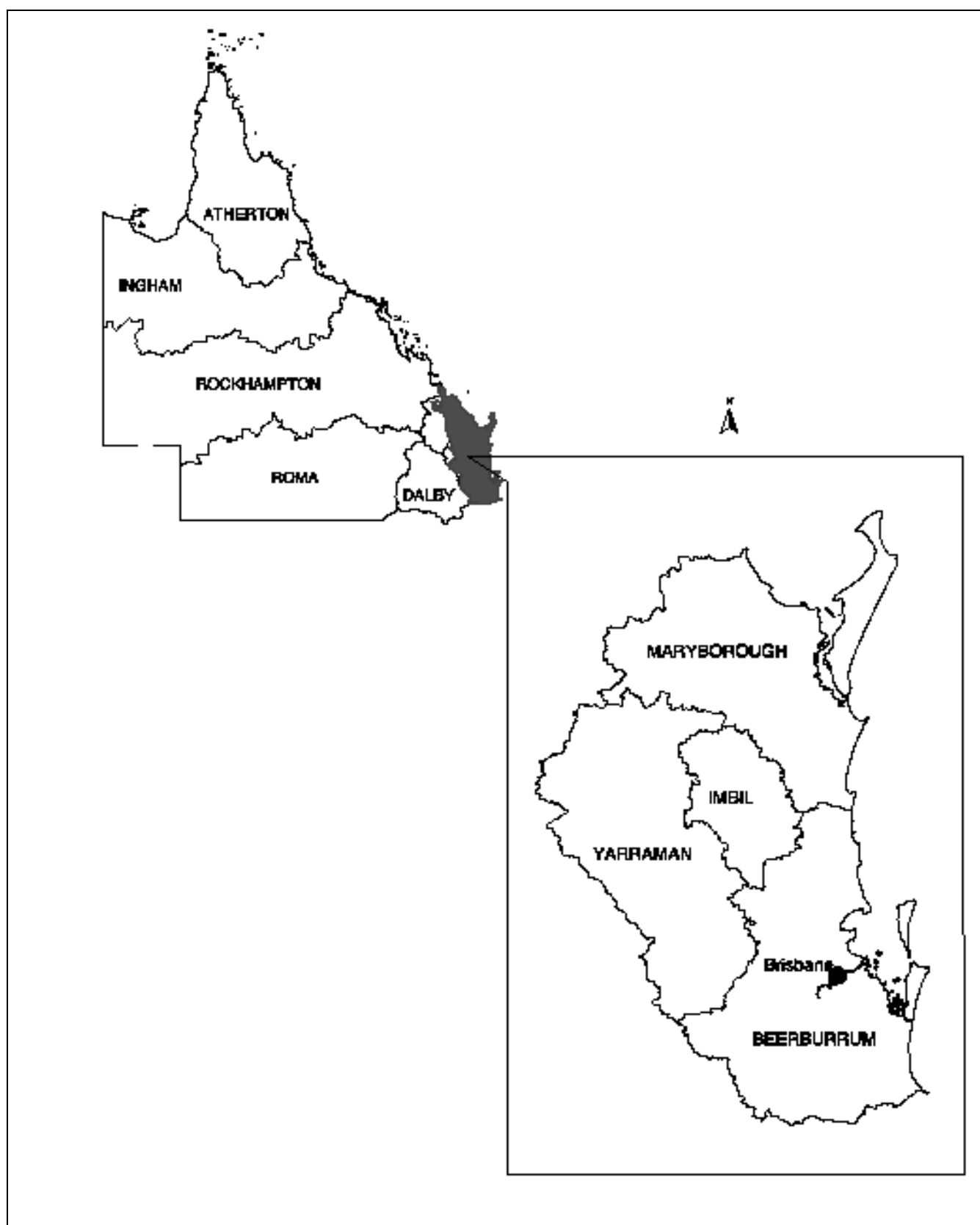
Due to time constraints, no work was undertaken in the Rockhampton Forestry District during the field work phase of the Historic project.

Place recording

A 'Place Report' form was developed for recording places in the field. This form was progressively refined during the project. Place recording during field work involved the completion of a place report detailing the location, type, and condition of the place, as well as a sketch plan. A Place Report form is included in Appendix 5. The information recorded was then entered into a database to compile the inventory. Additional place information has been progressively added to the database.

Places were photographed with colour slide and print film. Latitude and longitude readings were taken where possible with a Magellan GPS Field PRO V recorder with a field accuracy of 100 metres. These readings have been manually marked on topographic maps at a scale of 1:50 000 (or 1:100 000 where 1:50 000 maps were unavailable). Due to heavy canopy cover, GPS readings were not always possible, particularly in the more densely forested areas of the region, such as the rainforest areas of Lamington National Park. In these instances co-ordinates were taken from maps.

FIGURE 2.1 - FORESTRY DISTRICTS



SOURCE: DPI (Forestry) 95-96 YEARBOOK

2.4 ASSESSMENT OF CULTURAL HERITAGE SIGNIFICANCE

Cultural heritage assessment workshops were held following the fieldwork phase of the project. The Assessment Panel comprised members of the Cultural Heritage Focus Group for this study (which includes representatives of DoE, DPI (Forestry), DNR, Environment Australia, academics and technical experts, see Appendix 6), as well as additional technical expertise (according to the category of place under consideration) and representatives of stakeholder groups in the RFA process. Appendix 7 sets out the assessment program and lists those individuals who participated in the workshops.

Places were categorised for assessment generally according to their group (see also Section 3.1 and Table 3.2). Appendix 8 sets out the assessment categories and the types of places included in each category. In certain instances, larger groups were separated into a number of categories. For example, the group of Forestry and Timber Industry places were considered in categories of Forestry/QNPWS buildings, Sawmills, Timber handling equipment and processes and Tramways. Some places were considered more than once, for example, where a place had multiple uses, or where the use of the place had changed but the fabric of the place remained substantially unchanged. An example is former Forestry offices and barracks which are now used as outdoor/environmental education centres.

All places included in the inventory were assessed for cultural heritage significance against the criteria for the RNE and the QHR (Appendix 3). Whilst the wording of criterion (e) differs between the RNE and the QHR, the remaining criteria are generally complementary. The focus for assessment was on historic significance, as social and aesthetic significance were the subject of separate projects.

For places assessed as significant, a set of ‘threshold indicators’ developed by the AHC (Appendix 4) were applied to determine whether the place was of sufficient significance for consideration for inclusion in the Register of the National Estate.

2.5 LIMITATIONS

This section reviews the limitations on the Historic project at the broad level. The recommendations in Section 4.2 of this report are directed towards addressing and overcoming, where practicable, these limitations.

Time Constraints

The main factor affecting the results of the Historic project was time. Although the project worked to similar timelines used for RFA projects in other states, the size of the study area placed greater pressure on the available time. The SEQ biogeographic region is approximately five times the size of each of the Victorian RFA areas; the East Gippsland Forest Management Area of 1.2 million hectares (AHC 1994a:6), and the Central Highlands project area also of approximately 1.2 million hectares (AHC 1994b:2). Time constraints impacted on all aspects of the Historic project: identification, field survey and assessment of places.

The amount of research, particularly primary and archival research, able to be undertaken prior to fieldwork was constrained. Emphasis was therefore placed upon the field recording of places to establish the type and extent of places in the region, and subsequent research undertaken where a place was considered to be of particular importance.

Oral sources have provided an important source of information about places. However, as with all oral histories, there is an unavoidable 'subjective' element in the telling of stories. For example, oral history information, although accurate, may reflect the specific interests or experiences of the particular informant rather than provide comprehensive detail. This may be overcome, in part, by contacting as many people with knowledge of a particular area, place or time period as possible, and by follow-up archival research.

Given the time constraints, some areas were visited for field recording, whilst other areas were visited but in cursory detail only. Hence the inventory should not be considered as the definitive list of the historic cultural heritage places in forested areas in the SEQ biogeographic region.

Previous Research

Another important limitation, in part related to time, is the relatively small amount of existing information available during the project, particularly regional and thematic studies which provide the context for many of the places recorded during field work. This has been particularly significant when assessing and thresholding places for potential entry on the Register of the National Estate. To a certain extent this has been overcome by a series of CRA projects undertaken concurrently with the Historic project, especially the thematic history and the travel routes, forest towns and settlements projects.

Scope

The project to identify and record historic cultural heritage places has predominantly focused on public land in the SEQ biogeographic region, particularly State Forests and National Parks. Limited work has been undertaken with regard to private forested lands.

Further limitations, associated with particular research sources, have been outlined in Sections 2.1 and 2.2 of this report.

3. CHAPTER THREE - RESULTS

3.1 FIELD RECORDING

Inventory

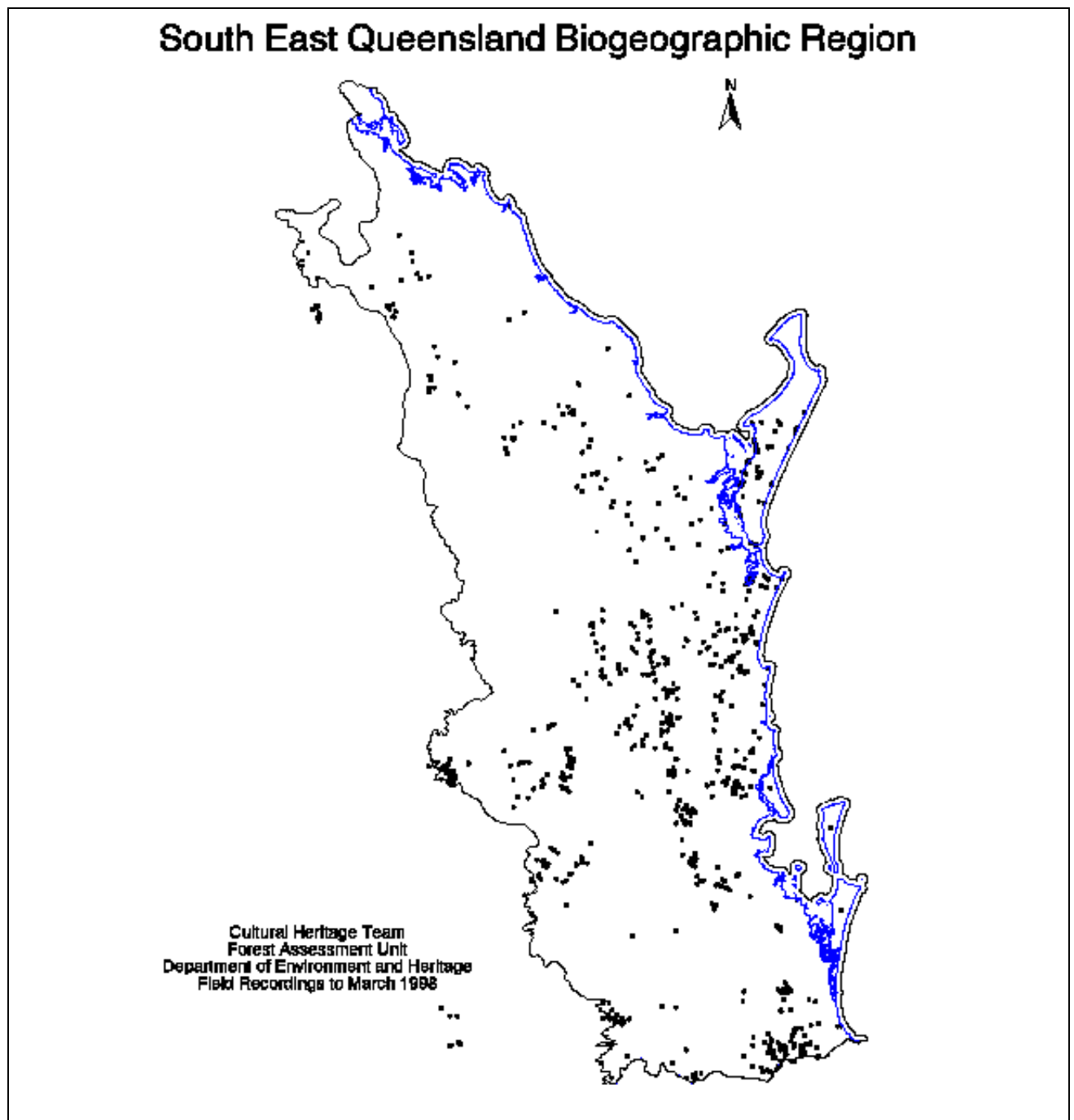
As at March 1998, 830 places were recorded in the inventory. It is important to note that this figure includes those places recorded by the study team during the Historic project as well as places recorded for their social value. Table 3.1 indicates the number of State Forests/Timber Reserves, National Parks/Conservation Parks, Recreation Reserves and other tenures on which places were recorded during field work, and the number of places recorded on each. Figure 3.1 indicates the overall spread of places in the inventory across the SEQ biogeographic region.

TABLE 3.1 PLACES RECORDED IN THE INVENTORY - LOCATION

	No. of places recorded	No. of areas visited where one or more places were recorded
State Forest/Timber Reserve	431	87
National Park / Conservation Park	191	22
Recreation Reserve (Great Sandy Recreation Reserve)	43	1
Other tenures (eg. private property) or place comprises a complex extending across multiple tenures	165	Not applicable
TOTAL	830	Not applicable

Consistent with the focus of the Historic project on public land in the SEQ biogeographic region, in particular State Forests and National Parks, three quarters of the places in the inventory are located on State Forest or Timber Reserve (52 per cent) and National Park or Conservation Park (23 per cent).

FIGURE 3.1 - PLACES RECORDED DURING PROJECT



SOURCE: DoE CRA Database - Cultural Heritage

Although the figures given for the number of areas visited appear low in comparison with the number of State Forests/Timber Reserves and National Parks/Conservation Parks in the SEQ biogeographic region (Section 1.1.2), they do not take into account other State Forests/Timber Reserves and National Parks/Conservation Parks which were investigated but no historic places were recorded, or places which were not visited during the course of the Historic project. Section 4.2 includes recommendations regarding areas for further work.

Section 1.1.2 referred to the incorporation of the groups, categories and themes developed by the AHC into the recording process. Whilst multiple categories and themes could be selected, one group only could be assigned for a particular place. Table 3.2 indicates the number of places in the inventory according to each group and provides examples of places in each group recorded during field work.

TABLE 3.2 PLACES RECORDED IN THE INVENTORY - GROUP

Group	No. of places	Examples of places recorded in SEQ biogeographic region (Places which are above National Estate threshold, or part of a complex which is above threshold, are identified by an asterisk “*”).)
Air Transport	8	Tobys Gap Airstrip Fraser Island*
Cemeteries & Burial Sites	16	Mill Point Cemetery*, Campbellville Cemetery*, Gertrude’s Grave Bunya Mountains*, Stinson Wreck and Gravesite*
Community Facilities	13	Numinbah Valley School of Arts, Lamington Exchange and Lamington Station
Education	16	Ringtail School Site, Coolloothin Creek School Site, Mt Binga Environmental Education Centre
Exploration, Survey and Places of Historical Events	13	Roberts Survey Tree “Coolya”*, KCB Tree*, Rock Cairn top of western peak of Mt D’Aguilar
Farming and Grazing	58	Beerburum Soldier Settlement Complex*, Austinville (banana) Settlement, Honey Extraction Site Kenilworth, Grazing Huts Bania State Forest, Bert Rankin’s Dairy Farm
Forestry and Timber Industry	337	Kenilworth Forest Station*, East Nanango Forest Station and Nursery, Old Beerburum Nursery Site, Foreign Legion Camp Site*, Yellow Waterhole Forestry Camp Site, Central Station Fraser Island*, Daisy Hill Charcoal Pit*, Salvage Log Dump*, Fraser Island Log Dumps*, Mt Archer Bullock Wagons and Timber Chutes*, Loading Ramp Mt Glorious, Kandanga Bobtail, Mt Cougal Sawmill Complex*, Elgin Vale Sawmill*

Government and Administration	15	Binna Burra QNPWS Office and Information Centre*, Numinbah Valley Border Gate
Health Services	1	Beerburum Hospital*
Hotels/ Motels / Inns	11	Binna Burra Mountain Lodge*, O'Reilly Cultural Complex*, Chandos Guest House
Landscape	52	Antarctic Beech Forest - Green Mountains*, Engraved Kauri Pine Mothar Mountain*, Point Glorious Lookout, Diana's Bath - D'Aguilar Range*
Law and Enforcement	3	Palen Creek Prison Farm
Manufacturing and Processing	2	Lincoln (Bootawa) Sugar Mill Site
Maritime Industry	1	Hook Point Lightkeeper's Residence Site Fraser Island
Military	10	Fraser Island Commando School Site*, Nerang Rifle Range*, Cainbale Firestone Rings, Bunyaville Military Bunker*
Mining and Mineral Processing	44	Glassford Mining Area*, Mt Clara Smelter*, Mt Cordeaux Gold Mine, Wright's Quarry Complex*, Jimna Gold Diggings*, Palen Creek Coal Site
Monuments & Memorials	20	Arthur Groom Memorial*, Robert Martin Collins Memorial Seat*, Tennison Woods Memorial, Pomona District School Memorial Forestry Plot*
Parks, Gardens and Trees	14	Site of Bell's Tree Reserve*, Win Bristow Garden Walk*, Avenue of Bunya Pines
Postal and Telecommunications	1	Telephone Line Pole - O'Reilly's
Public Utilities - Power, water, electricity, waste	6	Burton's Well*, Old Coach Road Well and Trough
Rail Transport	13	Boolboonda Tunnel* Larson's Road Railway Overbridge, Reeans Road Railway Formation and Plantings
Recreation & Entertainment	88	Lamington National Park*, Charlie Moreland State Forest Park*, Imbil Forest Drive, Goomburra SF Camping Area, Glasshouse Mountains Forest Drive
Religion	1	St Joseph's Church Green Mountains
Residential Buildings	10	Grenville Walker's Hut

Road Transport	32	Former Maryborough - Gayndah Road*, Spicers Gap Road Complex*
Scientific Facilities	2	Beerburum Scientific Area 1*, Crohamhurst Complex*
Shipwrecks	1	Cherry Venture
Water Transport	2	Jetty Ruins Poverty Point Terminus*
Other	40	
TOTAL	830	

There are six groups of places which together comprise just under three quarters of the places in the inventory. Forestry-related buildings and structures, including sawmills and tramways, make up the largest number (41 per cent) of the places recorded in the inventory. An indication of the multiple use of forested areas is the high number of places representing recreation (11 per cent), farming and grazing (7 per cent), and mining and mineral processing (5 per cent) activities. A number of places were also recorded which comprise landscapes and parks/gardens/trees (8 per cent), indicative of the overlap between natural and cultural heritage. The remaining 23 groups of places each comprise less than 5 per cent of the inventory.

Trigonometric stations were not exhaustively recorded during the field survey phase as they are already marked on maps. Scientific/experimental plots, arboreta and apiary sites were generally under-recorded as they are already documented by Forestry.

The lack of information at the commencement of this project, regarding historic places in forested areas in the SEQ biogeographic region, has already been outlined. Notwithstanding the limitations discussed in section 2.5, it is considered that the inventory of 830 places provides a useful basis for preliminary assessment of the cultural heritage significance of these places, and for recommendations regarding further work in the SEQ biogeographic region.

Visual and oral records

A comprehensive photographic collection of over 10 000 colour slides and an equivalent number of colour/black and white prints of places has been established during the project. This collection provides a valuable visual record of historic places in forested areas in the SEQ biogeographic region to 1997/1998. A set of 108 oral tapes (as at February 1998) has also been collected. The place reports, photographs and tapes are held by the Forest Assessment Unit: Cultural Heritage Team, Conservation Strategy Branch, DoE.

3.2 ASSESSMENT OF HISTORIC CULTURAL HERITAGE PLACES

Table 3.3 presents the results of the workshops during which places on the inventory compiled during the Historic project were assessed and thresholded for potential listing on the Register of the National Estate. As noted in Section 3.1, some of these places thresholded for

social rather than historic value. They are included in the inventory as they are places recorded during the Historic project. Further, although they threshold for social value, they are nevertheless considered to have historic significance.

As a result of the assessment process, some places were combined to form, for example, a complex or a cultural landscape.

TABLE 3.3 RESULTS OF HISTORIC VALUES ASSESSMENT WORKSHOPS

	No. of places
Significant, above National Estate threshold	89
Significant, part of National Estate place, eg. a complex or a cultural landscape	188
Significant	86
Not significant	15
Unassessed	452
TOTAL	830

On the basis of Table 3.3, slightly over one third of the places in the inventory are proposed for inclusion in the Register of the National Estate, either as an individual place (11 per cent of all places), or as part of a complex or a cultural landscape (23 per cent of all places). Table 3.2 also indicates that just over half of the places in the inventory remain unassessed (54 per cent). Although all places in the inventory were considered during the workshops, there was insufficient information available to make a cultural heritage assessment of these places. Further research would assist with the assessment of many of these places. A series of topics for further study are identified in Section 4.2.

Appendix 9 lists the places in the inventory according to the determination of significance. Detailed documentation for those places which are above threshold for National Estate historic significance, including those places which are part of a complex or a cultural landscape which is above threshold, is provided in a separate volume (Forest Assessment Unit 1998b).

Potential National Estate Historic places

Following the assessment workshops, a sub-group of the Assessment Panel reviewed the set of potential National Estate places against Regional Forest Themes and the thematic history project (Powell 1998a) as a way of cross-checking how well these places represent the history of forested areas in the SEQ biogeographic region (Appendix 10). Consideration was also given to the broad geographic groupings of this set of places, to identify areas of cultural heritage importance within the SEQ biogeographic region (Appendix 11).

Assessment of the potential National Estate places against the Regional Forest Themes indicates a reasonable coverage of places against those themes (particularly relevant to forested areas) highlighted in the thematic history of the SEQ biogeographic region. Themes which are particularly well represented by the potential National Estate places include:

- Mining
- Processing timber
- Transporting timber
- Managing the forests
- Establishing schools
- Recreating in the outdoors
- Experiencing the natural environment
- Commemorating significant events and people.

These themes generally reflect the most commonly recorded groups of places (Section 3.1). Some of the gaps in themes, referring again to those identified in the thematic history (Powell 1998a), may be attributed to the focus of the field work on forested areas, in particular, State Forests/Timber Reserves and National Parks/Conservation Parks. For example, it was therefore less likely that shipping ports would be recorded during field work.

In terms of the geographic distribution of potential National Estate places, there appears to be a reasonable spread of places across the region. Certain areas stand out as having higher concentrations of places: Lamington, Springbrook and Tamborine National Parks; the D'Aguilar Range; Crows Nest/Ravensbourne; the Bunya Mountains; the Yarraman district; the Beerwah/Beerburum district; the Mary Valley; the Great Sandy region including Cooloola and Fraser Island; Maryborough/Howard/Cordalba; and the Many Peaks/Calliope area. A number of these areas, or towns within these areas, are the subjects of case studies in the travel routes, forest towns and settlements project (Powell 1998b).

4. CHAPTER FOUR - CONCLUSIONS

4.1 CONCLUSIONS

The Historic project is one of a series of concurrent projects which investigated the cultural heritage values of forested land in the SEQ biogeographic region, focusing on public land such as State Forests/Timber Reserves and National Parks/Conservation Parks. With an emphasis on field survey and recording, the Historic project resulted in the compilation of an inventory of 830 historic places in forested areas in the region. A series of assessment and thresholding workshops identified 91 places proposed for inclusion in the Register of the National Estate for historic (and social) values.

The places proposed for inclusion in the RNE represent a range of activities undertaken in forested areas in the region. Some of the activities are directly related to forestry activities and forestry administration, whilst others, such as mining, are not restricted to forested areas. Geographically, important areas emerge where there has been concentration of activity in the past, and where material evidence survives of that activity.

4.2 RECOMMENDATIONS FOR FURTHER WORK

The main tasks of the Historic project were the compilation of an inventory of historic cultural heritage places in forested areas in the SEQ biogeographic region, and the assessment of places for potential listing on the Register of the National Estate. The following recommendations, although general in nature, are aimed at overcoming the limitations associated with the Historic project. These recommendations are not mutually exclusive, and it is envisaged that further study, for example, of the development of Forestry accommodation types, would rely heavily upon archival research and oral sources.

Archival work

The files now held by DPI (Forestry) and DNR are a valuable source of information regarding State Forests and Timber Reserves, and Forestry practices/structures. Further archival research is required to better understand the development of State Forests and Forestry practices/structures and to assist identification and understanding of historic cultural heritage places in forested areas. Similarly, further research is required of DoE files regarding the development of National Parks in the SEQ biogeographic region.

Oral history

Further recording of oral histories, including past and present Forestry officers, QNPWS Rangers and local residents, will provide additional contextual information and assist with recording of, and understanding, archaeological places. There is an element of urgency about this work as many of the people who are most able to provide information about the historic places are quite elderly.

Regional and Thematic studies

During the course of the Historic project, a number of areas were identified as requiring further study to provide contextual information for a better understanding of places in forested areas, and to assist in assessing such places.

Areas for further regional study include:

- Mary Valley
- Bunya Mountains
- Scenic Rim
- Boyne Valley
- Main Range
- Brisbane Forest Park

Topics for further study include:

- places in forests associated with WW2
- the role of Displaced Persons and immigrants in Forestry post WW2
- typologies of Forestry buildings, for example, accommodation and barracks, Forestry camps
- Scientific Areas in Forests
- Beauty Spots and Feature Protection Areas
- Arboreta
- oral histories to record aspects of timber and forestry history, for example, living conditions, changes to work practices, relations between timber contractors and Forestry, and women in the forest history

Field survey

Field survey work should be undertaken on those areas which have not yet been surveyed as part of the Historic project. These areas include, for example, Kroombit Tops, the Blackdown Tableland, Curtis, Moreton, Bribie and Stradbroke Islands, and private forested areas.

Further field survey work should also be carried out in areas for which limited survey work was undertaken during the Historic project, including the Many Peaks and Miriam Vale areas in the northern section of the SEQ biogeographic region, and Nerang, Main Range, and Brisbane Forest Park in the southern section.

For those people involved in the management of these areas, it is essential that there be access to the records of this project and and for the incorporation of these records into management regimes. It is also important that ongoing opportunities exist to record historic places in forested areas.

APPENDICES

APPENDIX 1

Individuals and organisations which assisted with research, oral history and/or field work during the Historic project

QNPWS

Rodney Anderson	Binna Burra Section - Lamington NP
David Beatty	Bunya Mountains NP
Will Buch	Tamborine NP
Peter Chapman	Gold Coast Parks Management Unit
Percival Denning (Snr)	Binna Burra Section - Lamington NP
Steven Finlayson	Main Range NP
William Flenady	Binna Burra Section - Lamington NP
Michael Hall	Springbrook NP
John Hodgson	Bundaberg
Steve Johns (dec'd)	Elanda Point
Bevan Lucas	Fraser Island
Shane Marsterson	Fraser Island
Mack Middis	Woodgate
Sue Olsson	Maryborough
Andrew Quirk	Green Mountains Section - Lamington NP
John Ravenscroft	Mt Glorious NP
Errol Ryan	Crows Nest/Ravensbourne NP
Doug Schulz	Maryborough
Lawrie Shelley	Main Range NP
Russell Standen	Woodgate
Neil Teague	Cania Gorge NP
Bob Thomson	Bundaberg
Rodney Toney	Binna Burra Section - Lamington NP
Greg Walker	Rainbow Beach
Richard Whitney	Bunya Mountains NP

Brisbane Forest Park

David Kington

DoE Photographic Library

Paul Candlin

Adam Creed

DNR

Peter Burton	Gympie
Peter Fraser	Bundaberg
Eric Glassop	Kenilworth
Paul Harris	Mt Mee SF
Alan Heisner	Mt Mee SF
Andrew Houley	Mt Mee SF
Trevor Kamp	Beerburum Nursery
Bill Kitson	Museum of Mapping and Surveying, Woolloongabba

Peter Leeson	Gympie
Leo McNalty	Yarraman
Mark Peacock	Brisbane
Warren Raddatz	Brisbane
Les Yann	Blackbutt

DPI (Forestry)	Office / Location
Roger Burgess	Gallangowan
Ivan Casperson	Maryborough
Geoff Charnock	Tuan
Brian Cook	Pechey
Ron Dreger	Tuan
Keith Fraser	Gallangowan
John Freeman	Maryborough
Neil Gourley	Brisbane
Dick Jackson	Yarraman
Neil Jones	Dalby
Col Juillerat	Yarraman
Ian Last	Yarraman
Brian McCormack	Imbil
Peter Munt	Maryborough
Rob Murphy	Kalpowar
Jim Nichol	Brisbane
Cliff Pearce	Amamoor
Geoff Pearce	Beerburum
Trevor Perry	Jimna
Gordon Pratt	Tuan
Dennis Rolfe	Monto
Doug Shepherd	Imbil
Stewart Stuckey	Pechey
John Verden	Bundaberg
Bob Walker	Tuan
Keith Watson	Monto
Brian Wilson	Toolara
Brian Yann	Imbil

DPI (Forestry) Library

Marcia Tommerup

DPI (Forestry) - Maps

Owen Betts

Local Museums/Historical Societies

Cooroora Historical Society, Pomona
 Numinbah Valley School of Arts
 Rathdowney Information Centre
 Tamborine Mountain Heritage Centre
 Woocoo Historical Society, Brooweena

Individuals

Kevin Ahearn
Angus Alexander
Linus Bagley
Winifred Bristow
Elaine Brown
Geoff Brown
Ross Brown
Merv Bunney
Robyn Burrows
Jim Campbell
Keith Chalk
Clare Chambers
Stan Chambers
William Cook
Joe Cunningham
Joy Dare
Barry Davies
Alison Drake
John Driver
Victor Fedorniak
Fay Fedorniak
J Fritz
Lester Geritz
Tane Gravatt
Marjorie Groom
Tony Groom
David Groves
Frank Hammond
Ken Hartley
Catherine Hennessy
Janice Hopf
John Hopf
Ray Humphrys
Bart Kellett
Darcy Kelly
Rhelma Kenny
Valerie King
Shirley Lahey
Dave Lewis
Sandy Luck
Carl Ludwig
Sydney Luxford
Paul Lyons
Colin Marggraf
Brian McGann
Les McGregor
Elaine Millan
Victoria Morgan
Lindsay Muller

Area of Interest

Main Range, Boonah, Ipswich
Beerburrum
Lamington NP
Binna Burra - Lamington NP
Cooloola
Cooloola
Pechey
Pomona/Tewantin
Nerang/Mudgeeraba
Fraser Island
Main Range
Mt Mee
Mt Mee
Beerburrum
Fraser Island
Numinbah
Lamington NP
Lamington NP
Mt Mee
Kenilworth
Kenilworth
Beerburrum
Yarraman
Lamington
Lamington NP
Lamington NP
Ravensbourne
Beerburrum
Lamington NP
Mt Mee
Many Peaks
Many Peaks/Builyan/Kroombit Tops
Bunya Mountains
Pomona/Tewantin
Brisbane Forest Park
Lamington NP
Mt Mee
Lamington
Jimna
Fraser Island
Palen Creek
Mt Mee
Tamborine
Lamington NP
Fraser Island
Nerang/Mudgeeraba
Blackbutt/Benarkin
Lamington NP
Lamington NP/Clifton

Rodney Nicklin	Brisbane Forest Park
Michael O'Reilly	Lamington NP
Peter O'Reilly (Jnr)	Lamington NP
Peter O'Reilly (Snr)	Lamington NP
Tim O'Reilly	Lamington NP
John Ritchie	Beechmont
Neville Robinson (dec'd)	Mt Mee
Tom Ryan	Maryborough
Frances Schulze	Boyne Valley/Norton
David Schulze	Boyne Valley/Norton
Laurie Shute	Binna Burra - Lamington NP
Diane Smith	Pechey
Gwen Smith	Ravensbourne
Neville Smith	Ravensbourne
Harry Spring	Cooloola/Tewantin/Cooroy/Gympie
Kym Stirling	Bunya Mountains
Michael Stirling	Bunya Mountains
Vic Summers	Gympie Woodworking Museum
Phil Thompson	Nerang/Mudgeeraba
Harry Thomsett	Kalpowar/Bulburin
Mervyn Venz	Beerburum
George Venz	Gympie/Cooloola
Peter Wagner	Helidon
Francis Wendt	Beerburum
Gertrude Williams	Mt Mee
Les Williams	Mt Mee
Bryan Winkel	Mt Mee
Jim Yuan	Numinbah
Archie Zorpf	Ravensbourne

APPENDIX 2

Project Terms of Reference



QUEENSLAND DEPARTMENT OF ENVIRONMENT & ENVIRONMENT AUSTRALIA

TERMS OF REFERENCE

NATIONAL ESTATE: HISTORIC VALUES PROJECT

1. PURPOSE OF PROJECT

The purpose of this project is to record, assess, and threshold for potential listing in the Register of the National Estate (RNE), historic cultural heritage places in forested areas within the SEQ biogeographic region.

Places of cultural significance to Indigenous people will be addressed as a separate project.

1.1 Context of Project

The National Estate Historic Values project forms part of the cultural heritage component of the Comprehensive Regional Assessment (CRA) work being undertaken prior to the formulation of a Regional Forest Agreement (RFA) to be signed by the State and Commonwealth Governments in 1998. The RFA will aim to:

- protect environmental values (fauna, flora and cultural heritage) in a world class reserve system;
- give forest industries the certainty they need to create jobs and opportunities; and
- ensure that the whole forest estate is managed sustainably for future generations.

This project will be complementary to other investigations of the historic values of forested areas, including a Thematic overview, a study of Travel Routes, Forest Towns and Settlements, and a study of Sawmills and Tramways. Other cultural heritage projects are being undertaken through the CRA to identify cultural heritage places against social and aesthetic significance criteria.

2. STUDY AREA

The study area for this project is the forested area of the South East Queensland (SEQ) biogeographic region, including both public and private land with emphasis on public land.

3. PROJECT PERSONNEL

The project will be undertaken by a study team based in the Forest Assessment Unit, Conservation Strategy Branch, Department of Environment. The study team will comprise a Senior Conservation Officer, a Conservation Officer and two Technical Officers.

The study team will report to the Principal Conservation Officer (Cultural Heritage), Forest Assessment Unit, Conservation Strategy Branch.

4. TASKS

The study team will be required to:

- Identify and record, through field survey, cultural heritage places in forested areas in the SEQ biogeographic region;
- Maintain a database of information about places recorded through field survey;
- Map cultural heritage places on 1:50,000 maps (or 1:100,000 where required);
- Maintain a photographic collection of places recorded through field survey;
- Assist with a series of community cultural heritage workshops to identify places of social, aesthetic and historic value to the community;
- Assist in the identification of places or areas for potential inclusion in the RNE for historic values and prepare statements of cultural heritage significance for such places; and,
- Prepare a written report on the project for submission to the joint Commonwealth/State Steering Committee which oversees the CRA of forests in the SEQ biogeographic region.

4.1 Methodology

Research

- Written records:
 - local and regional published and unpublished history sources in University, government and local libraries
 - archival files and maps at Department of Natural Resources (DNR), Department of Environment (DoE), Department of Primary Industries (DPI) (Forestry) and Queensland State Archives
- Photographs:
 - photographic collections at John Oxley Library, DPI (Forestry) Library, DoE Photographic Library
 - private photographic collections
- Maps:
 - DPI (Forestry), DNR and DoE
- Heritage Registers:
 - Register of the National Estate (RNE)
 - Queensland Heritage Register (QHR)
- Oral interviews:
 - current and retired foresters
 - National Parks rangers
 - local residents
- Community heritage workshops:
 - historical data about places from the 13 community workshops

Field survey

- Field survey work to identify and assess historic cultural heritage places with focus on public land ie. State Forests and National Parks. Data recorded with the use of place reports, Global Positioning System (GPS) recorders and cameras.

Assessment

- Assessment of places and values against National Estate and State heritage criteria and production of documentation suitable for interim listing in the RNE.

Data collation and presentation

- Data entered into Access Database
- Data generated for Geographic Information System (GIS) mapping used to produce a cultural heritage GIS layer showing areas of historic significance.

5. REPORTING

The written final report is to be prepared following the format required by the joint Commonwealth/State steering committee.

The written final report is to be presented in two parts: Part 1 setting out the objectives of the project, the methodology employed in the project and the results of the project; and Part 2 comprising the detailed place documentation suitable for interim listing in the RNE.

Materials from this project, including project report, database, maps, photographs and oral tapes, will be delivered in both electronic and hard copy forms as appropriate.

6. WORK SCHEDULE

- The identification and field survey work is to be undertaken between April and November 1997.
- Places are to be assessed and thresholded for National Estate historic value by 19 December 1997;
- Part 1 of the final written report on project is to be completed by 27 February 1997;
- Part 2 of the final written report, including place documentation for potential National Estate listing, is to be completed by 25 March 1997.

Project Officer

Dr Margaret Kowald
Forest Assessment Unit (Cultural Heritage)
Department of Environment
9th floor, 160 Ann Street, Brisbane Qld
PO Box 155 Brisbane Albert Street Qld 4002
Ph: (07) 3227 8988
Fax: (07) 3227 7803

APPENDIX 3

Significance criteria

Register of the National Estate

Queensland Heritage Register

1. Register of the National Estate criteria:

Those criterion which have proved particularly relevant in similar studies in other states are shown in italics.

Criterion A: Its importance in the course, or pattern, of Australia's natural or cultural history.

- A1: Importance in the evolution of Australian flora, fauna, landscapes or climate.
- A2: Importance in maintaining existing processes or natural systems at the regional or national scale.
- A3: *Importance in exhibiting unusual richness or diversity of flora, fauna, landscapes or cultural features.*
- A4: *Importance for association with events, developments or cultural phases which have had a significant role in the human occupation and evolution of the nation, State, region or community.*

Criterion B: Its possession of uncommon, rare or endangered aspects of Australia's natural or cultural history.

- B1: Importance for rare, endangered or uncommon flora, fauna, communities, ecosystems, natural landscapes or phenomena, or wilderness.
- B2: *Importance in demonstrating a distinctive way of life, custom, process, land-use, function or design no longer practised, in danger of being lost, or of exceptional interest.*

Criterion C: Its potential to yield information that will contribute to an understanding of Australia's natural or cultural history.

- C1: Importance for information contributing to a wider understanding of Australian natural history, by virtue of its use as a research site, teaching site, type locality, reference or benchmark site.
- C2: *Importance for information contributing to a wider understanding of the history of human occupation of Australia.*

Criterion D: Its importance in demonstrating the principal characteristics of

(i) A class of Australia's natural or cultural places; or

(ii) A class of Australia's natural or cultural environments.

- D1: Importance in demonstrating the principal characteristics of the range of landscapes, environments or ecosystems, the attributes of which identify them as being characteristics of their class.
- D2: *Importance in demonstrating the principal characteristics of the range of human activities in the Australian environment (including way of life, custom, process, land-use, function, design or technique).*

Criterion E: Its importance in exhibiting particular aesthetic characteristics valued by a community or cultural group.

- E1: *Importance for a community for aesthetic characteristics held in high esteem or otherwise valued by the community.*

Criterion F: Its importance in demonstrating a high degree of creative or technical achievement at a particular period.

- F1: *Importance for its technical, creative, design or artistic excellence, innovation or achievement*

Criterion G: Its strong or special associations with a particular community or cultural group for social, cultural or spiritual reason.

- G1: *Importance as a place highly values by a community for reasons of religious, spiritual, symbolic, cultural, educational or social associations.*

Criterion H: Its special association with the life or works of a person, or group of persons, of importance in Australia's natural or cultural history.

- H1: *Importance for close associations with individuals whose activities have been significant within the history of the nation, State or region.*

2. Queensland Heritage Act (1992) criteria:

- (a): The place is important in demonstrating the evolution or pattern of Queensland's history.
- (b): The place demonstrates rare, uncommon or endangered aspects of Queensland's cultural heritage.
- (c): The place has potential to yield information that will contribute to the understanding of Queensland's history.
- (d): The place is important in demonstrating the principal characteristic of a particular class of cultural places.
- (e): The place is important because of its aesthetic significance (includes its visual merit or interest).
- (f): The place is important in demonstrating a high degree of creative or technical achievement at a particular period.
- (g): The place has a strong or special association with a particular community or cultural group for social, cultural or spiritual reasons.
- (h): The place has a special association with the life or work of a particular person, group or organisation of importance in Queensland's history.

APPENDIX 4

Threshold Indicators

Criterion A: Its importance in the course, or pattern, of Australia's natural or cultural history

A.4 Importance for association with events, developments or cultural phases which have had a significant role in the human occupation and evolution of the nation, State, region or community.

COURSE AND PATTERN OF HISTORY

Sub-Crit.	Significance Indicators	Threshold Indicators
A.4	<p>A high integrity of features exhibiting significant aspects of the history of human occupation</p> <p>An association with important local, regional, state or national events or process</p> <p>The place was important in the consolidation and expansion of the region</p> <p>An association with a landmark event in the nation, state region or community</p> <p>The place demonstrates uncommon human endeavour /phases of land use and living</p>	<p>The place exhibits high integrity in its features of significant aspects of history and human occupation</p> <p>The expressions of theme and storyline is regarded in the community, region or nation as important</p> <p>The demonstration of theme /storyline in terms of cultural phases and historic events is uncommon in the region</p> <p>The place clearly demonstrates or represents a landmark event or events in the history of the nation, state, region or community</p>

Criterion B: Its possession of uncommon, rare or endangered aspects of Australia's natural or cultural history

B.2 Importance in demonstrating a distinctive way of life, custom, process, land-use, function or design no longer practised, in danger of being lost, or of exceptional interest.

RARITY

Sub-Crit.	Significance Indicators	Threshold Indicators
B.2	<p>Rarity of: type, theme, storyline , technology, design, style expressions</p> <p>Rarity of elements</p> <p>Rarity of the type places land use practice, or resource exploitation which was once commonly present</p> <p>Rarity of type places in particular environments</p>	<p>The type of place is rare or threatened</p> <p>The place with its expression of type/theme/storyline has uncommon intactness or integrity in areas heavily impacted by development or other activities</p> <p>The place is regarded by experts as being a rare example of type</p>

Criterion C: Its potential to yield information that will contribute to an understanding of Australia's natural or cultural history

C.2 Importance for information contributing to a wider understanding of the history of human occupation of Australia.

REFERENCE/RESEARCH

Sub-Crit.	Significance Indicators	Threshold Indicators
C.2	Dated and benchmark sites Places important to the history of research Places used for and which have potential for social history, historic themes, design style and technology education Places where monitoring has been or is being carried out	The place is well established for research importance The place has potential for research or public education which is greater than similar places The place has additional features to enhance its value for education such as public access

Criterion D: Its importance in demonstrating the principal characteristics of:

- (i) a class of Australia's natural or cultural places; or
- (ii) a class of Australia's natural or cultural environments

D.2 Importance in demonstrating the principal characteristics of the range of human activities in the Australian environment (including way of life, custom, process, land-use, function, design or technique).

CHARACTERISTIC TYPE

Sub-Crit.	Significance Indicators	Threshold Indicators
D.2	<p>Places important as a complex, precinct or a landscape containing an array of features representative of a particular type</p> <p>Places which are intact representative examples of a type of structure, technology, design style, landscape or network</p> <p>Places important as representatives type/theme/ or technology</p>	<p>The place displays variation within type.</p> <p>The type represent the optimum development of a style or technology</p> <p>The type is one of a number of similar places but has enhanced condition and integrity</p> <p>The place is regarded by experts as being an outstanding example of type</p>

Criterion E: Its importance in exhibiting particular aesthetic characteristics valued by a community or cultural group

E.1 Importance for a community for aesthetic characteristics held in high esteem or otherwise valued by the community.

AESTHETIC

Sub-Crit.	Significance Indicators	Threshold Indicators
E.1	<p>Meanings, evocative qualities, symbolic values (eg inspirational, awe inspiring, majestic, untouched, pristine, fearful, having age/time depth, naturalness, lushness, peace, tranquillity, mystery).</p> <p>Symbolic landmark (eg represented in art, poetry, photography, literature, folk-art, local identity imagery, folklore, mythology etc)</p> <p>Outstanding landmark or feature (eg dramatic, sublime, unusual shape, strong colour etc)</p> <p>Attributes and composition qualities (combinations of colour, form, texture, detail, movement, unity, animals, sounds, spatial definition, prospect etc)</p>	<p>Cultural features or landscapes and natural features or landscapes with evocative qualities, symbolic or other associated meaning, recognised and regarded as outstanding by community groups.</p> <p>Important as a local landmark valued by a community or cultural group.</p> <p>An unusual or prominent landmark or feature which has distinct form, is prominent in the local area, or has symbolic importance.</p> <p>When compared with other like places or landscapes of similar character or characteristics the strength of the aesthetic attributes is high.</p>

Criterion F: Its importance in demonstrating a high degree of creative or technical achievement at a particular period

F.1 Importance for its technical, creative, design or artistic excellence, innovation or achievement.

TECHNICAL ACHIEVEMENT

Sub-Crit.	Significance Indicators	Threshold Indicators
F.1	Innovative design or use of materials	The design and technology is innovative and comparatively more outstanding than similar known similar types of places
	Innovative departure from established design, or technological advancement	The technological solution is outstanding due to its conceptual strength The design is outstandingly creative being an innovative departure from established norms if a field of design or the arts
	High innovation in the exploitation of resources	The place achieves a design solution function or purpose in an innovative, or exceptional manner
	Technological achievement	There is an original use of material, elements or features in a construction or assemble that well achieves a purpose The innovative design or acclaimed excellence is substantiated by experts
	Acclaimed excellence	The quality of design excellence for the period unparalleled in the region

Criterion G: its strong or special associations with a community or cultural group for social, cultural or spiritual reasons

G.1 Importance as a place highly valued by a community for reasons of religious, spiritual symbolic, cultural, educational or social associations.

SOCIAL VALUE

Sub-Crit.	Significance Indicators	Threshold Indicators
G.1	<p>Important to the community as a landmark, marker or signature (eg landmarks, signature places and icons, locational markers, places for understanding community history and environment)</p> <p>Important as a reference point in a communities identity or sense of itself</p> <ul style="list-style-type: none"> -strong symbolic qualities which define a community -spiritual or tradition connection between past and present - association with events having a profound effect on a community -symbolically represents the past in the present -represents attitude, beliefs, behaviours fundamental to community identity. (eg. mythological sites, place of continuing tradition, ceremony, places where continuity/survival of a community is celebrated, places where a community's identity has been forged such as disaster sites or special events) <p>Strong or special community attachment developed from use and/or association</p> <ul style="list-style-type: none"> - essential community function leading to special attachment - longevity of ongoing use as a place of social interaction (eg halls, churches, schools, community meeting places, places defended at times of threat, places with a tradition of and continuity of use or access. 	<ul style="list-style-type: none"> • Key marker or signature used by a community to define itself or a well known feature within a defined or local community • There is a substantiated association with a range of established organisations or with a particular social group or groups for religious, spiritual or other reasons • There is a longevity of association by a social group from past to present, or a long association but with some discontinuity • Having fundamental community meanings widely recognised throughout a community • Fundamental or important community attachments widely recognised throughout a community

Criterion H: Its special association with the life or works of a person, or group of persons, of importance in Australia's natural or cultural history

H.1 Importance for close associations with individuals whose activities have been significant within the history of the nation, State or region.

HISTORIC PERSONS

Sub-Crit. H.1	Significance Indicators	Threshold Indicators
	<p>Association with person prominent in local state or national history for political, scientific, new technology or other reason</p> <p>Importance of person or group</p>	<p>There is a strong association with an important person's productive life</p> <p>The association of a person or group with the place is long, or is an exceptional but short term event and there is documentation to substantiate the association of the person or group</p> <p>There is a clear direct link of the person's work with the place</p>

APPENDIX 5

Examples of Forms developed for use during the Historic project



QUEENSLAND GOVERNMENT

Department of Environment

Data Entry ☐ Map ☐ Photos ☐

Cultural Heritage Place Report

Send completed forms to The Forest Assessment Unit, Conservation Strategy Branch, Department of Environment, PO Box 155, Brisbane Albert Street, QLD 4002. For information phone (07) 3227 8988.

Office Use Only

DoE File Ref.:

Place ID#:

Recorder Details

Name: Telephone:.....
 Organisation: Fax:.....
 Address:

Place Details

Name of place: Date Recorded:.....
 Other Names: ☐ Aboriginal ☐ Historic ☐ Natural
 Category of place: Theme:.....

Location *GPS reading (preferred) with AMG eastings / northings from the largest scale map available.*

Local Government: Forestry District: ☐ Beerburum ☐ Rockhampton ☐ Imbil
☐ Gympie ☐ Maryborough ☐ Monto ☐ Yarraman
 Locality: (eg National Park, State Forest, property name)
 Nearest Town: Distance from:Klm Direction from:
 Street Address: Real Property Description:.....
 GPS Recorded: ☐ Yes ☐ No Accuracy to m. Latitude.....S Longitude.....E (e.g. 137° 30' 30")
 Map Name: Zone/Nmbr: Scale: 1: Grid Reference: E N

Sketch Plan of the Place and Access Map (if necessary) *Label the main components, indicate the site's boundary*

↑
N

Describe the Boundaries to the place:

Description of Place *Note the main components and the place's environmental context - please take photographs if possible*

History and Significance of Place

Potential Assessment Criteria 1. Nat. Estate:

2. Queensland:

Management Information *If there is a major impact on the place, please take a photograph of this aspect*

Current use of land/place:

- | | | | |
|------------------|---|--|--|
| Condition | <input type="checkbox"/> No apparent damage | <input type="checkbox"/> Minimal damage | <input type="checkbox"/> Unknown |
| | <input type="checkbox"/> Stability undermined - deteriorating | <input type="checkbox"/> Deteriorated (eg. ruin) | <input type="checkbox"/> Other..... |
| Impacts | <input type="checkbox"/> Development | <input type="checkbox"/> Lack of Maintenance | <input type="checkbox"/> Natural Erosion |
| | <input type="checkbox"/> Vandalism | <input type="checkbox"/> Insects (eg termites) | <input type="checkbox"/> Animals |
| | <input type="checkbox"/> Visitor Impact | <input type="checkbox"/> Vegetation | <input type="checkbox"/> Other..... |
| | <input type="checkbox"/> Unknown | | |

Condition (state of repair) & Integrity (authenticity/intactness) :

Management Requirements:

Sources of Information

Field contact person/s:

Address:

Phone: Association with place:

Photographs ☐ Yes ☐ No **Tapes** ☐ Yes ☐ No

Prints: CP..... **Slides:** CS..... **Tapes:**

Other reference materials / Potential Informants:



QUEENSLAND GOVERNMENT

Department of Environment

Ph: 07 3227 6499

Fax: 07 3227 7803

ORAL RECORDS

ACCESS AND RIGHTS AGREEMENT

I, (print name)....., of

(postal address):

.....

.....

State:..... Postcode:..... Phone No.....

assign all rights in the tape recordings and transcripts of interviews with me conducted by

(interviewer)

on (date/s), 19.....

to the Department of Environment for these purposes:

Research Use:

I agree (*strike out as required*)

- that the tapes and transcripts of this interview may be lodged with the Department of Environment for inspection by researchers;
- that copies may be supplied by the Department of Environment for private research purposes;
- that, at the discretion of the Department of Environment, tapes may be stored and used at the John Oxley Library;
- other instructions.

.....
.....

Publication:

I agree that publication, broadcast, public performance or display of the tapes and transcript be permitted (*strike out as required*)

- at the discretion of the Department of Environment;
- other instructions.

.....
.....

Signed:.....

Date: / /19

Informant received signed form ()



QUEENSLAND GOVERNMENT

Department of Environment

Ph: 07 3227 6499

Fax: 07 3227 7803

PRINTED MATERIAL AND PHOTOGRAPHS

ACCESS AND RIGHTS AGREEMENT

I, (*print name*)....., of

(*postal address*):

State:..... Postcode:..... Phone No.....

hereby give my permission for the Department of Environment (DoE) to use the following:

Printed Material: Specify type:

.....
.....

Tick where applicable:

- () To be quoted by the Department of Environment
- () To be copied by the Department of Environment for records of places
- () To be returned to the owner

Photographs: Specify photographs:

.....
.....

Tick where applicable:

- () To be copied by DoE and stored with DoE records
- () To be reproduced for research and reporting purposes by DoE
- () To be returned to the owner

Signed: DoE officer/consultant.....

Signed: Informant:

Date: / /19
Informant received signed form ()

APPENDIX 6

Cultural Heritage Focus Group

Marilyn Truscott	Environment Australia
Dr Margaret Kowald	Department of Environment
Dr Judy Powell	Department of Environment
Fiona Botham	Department of Environment
Cheryl Woodman	Department of Environment
Sarah Lewis	Department of Environment
John Schiavo	Department of Environment
Terry Harper	Queensland National Parks and Wildlife Service, Department of Environment
Jane Lennon	Consultant
Dr Thom Blake	Historian
Margaret Pullar	Historian
Dr W. Ross Johnston	University of Queensland
Eric Glassop	Department of Natural Resources
Gus Cheratzu	Department of Natural Resources
Warren Raddatz	Department of Natural Resources
Neil Gourley	Department of Primary Industries (Forestry)

APPENDIX 7

Assessment Program and Panel

The following table lists the people involved over a number of sessions to assess significance of places recorded during field work. Particular people were targetted for particular sessions because of their specific area of expertise eg. representatives of Department of Mines and Energy only attended session where mining-related places were considered.

Wed 26 Nov 1997 1.30 - 3.30pm	Thurs 27 Nov 1997 9 - 11.30am	Tues 9 Dec 1997 9am - 4pm
Fire Towers	Mines	Forestry offices, camps, nurseries, QNPWS offices Timber handling Scientific areas & Arboreta Recreation
Marilyn Truscott EA Margaret Kowald DoE Annabelle Stewart-Zerba Fiona Botham DoE Cheryl Woodman DoE Sarah Lewis DoE John Schiavo DoE Howard Pearce DoE Jackie Bettington (Consultant) Ross Hamwood DPI (Forestry) Thom Blake (Historian)	Margaret Kowald DoE Fiona Botham DoE Cheryl Woodman DoE Sarah Lewis DoE John Schiavo DoE Howard Pearce DoE Thom Blake (Historian) Jane Lennon (Consultant) Ruth Kerr DME David Morwood DME Ian Wallace QMC	Marilyn Truscott EA Margaret Kowald DoE Fiona Botham DoE Cheryl Woodman DoE Sarah Lewis DoE John Schiavo DoE Thom Blake (Historian) Jane Lennon (Consultant) Margaret Pullar (Historian) W. Ross Johnston UQ John Ravenscroft QNPWS Terry Harper QNPWS Eric Glassop DNR Kev Palisi DNR Gus Cheratzu DNR Matt Ferguson DNR Neil Gourley DPI (Forestry) Kellyann Ryan FPS

Wed 10 Dec 1997 9am - 4pm	Thurs 11 Dec 1997 9am - 2pm
Sawmills Tramways Road transport Rail transport Air transport Exploration Farming and grazing Military Landscapes & Trees	Education Memorials & monuments Cemeteries Disaster sites Social value
Marilyn Truscott EA Margaret Kowald DoE Fiona Botham DoE Cheryl Woodman DoE Sarah Lewis DoE John Schiavo DoE Howard Pearce DoE Thom Blake (Historian) Jane Lennon (Consultant) Margaret Pullar (Historian) W. Ross Johnston UQ Eric Glassop DNR Rosalind Edgar DNR Matt Ferguson DNR Neil Gourley DPI (Forestry) Kellyann Ryan FPS	Marilyn Truscott EA Margaret Kowald DoE Fiona Botham DoE Cheryl Woodman DoE Sarah Lewis DoE John Schiavo DoE Thom Blake (Historian) Jane Lennon (Consultant) Margaret Pullar (Historian) W. Ross Johnston UQ Eric Glassop DNR Terry Harper QNPWS

APPENDIX 8

Assessment categories

Category	Types of places included in category
Forestry / QNPWS buildings	Forestry offices, camps, nurseries, QNPWS offices
Recreation	Walking tracks, track signage, camping areas, lookouts, picnic areas, forest drives
Sawmills	Sawmills
Farming and Grazing	Soldier settlements, banana settlements, apiary sites, dairy farms, cattle grazing and associated structures such as huts, yards, dips
Landscapes and Trees	Individual trees or particular stands of trees, natural features
Fire Structures	Tree lookouts, fire cabins, fire towers
Timber handling equipment and processes	Shelter sheds in forests, charcoal pits, log dumps, rafting grounds, timber chutes, machinery, for example, jinkers, bobtails, wagons
Mining	Sand, gold, copper and coal mining, quarrying sandstone, evidence ranging from old workings, holes in the ground, remnants of machinery, structures, contemporary mining operations
Road transport	Roads, bridges, Cobb and Co. coach stops, watering points
Memorials and Monuments	Plaques, cairns, trees, rest areas, lookouts, structures
Tramways	Tramways
Education	Former school sites, outdoor/environmental education centres
Cemeteries	Lone graves, disaster site graves, cemeteries
Rail transport	Railway structures - tracks, bridges, tunnels
Accommodation places	Guesthouses, resorts not including recreational camping

Exploration and Survey	Survey trees
Disaster Sites	Aircraft crash sites, sawmill explosions, lightning strike site
Military	Rifle ranges, places associated with military training camps, firestone rings
Scientific Areas, Arboretums	Scientific/experimental plots, arboreta
Air transport	Airstrips
Other, ungrouped places	For example, Water reservoir, Prison farm

APPENDIX 9

Inventory (Arranged by significance status)

Appendix 9 comprises two tables. The first table consists of all places in the inventory arranged according to significance. The second table sets out the values for which places are proposed to be above National Estate threshold. This table amalgamates the result of the separate historic, social and aesthetic values projects, as a particular place/complex may have been identified to be above threshold in one or more of these projects.

Summary List of Places and their Significance Status

PlaceName	Category	DoEFileRef
Significant (above National Estate threshold)		
Amaroo Environmental Education Centre - Pechey	[Camp, forest workers - Forestry] HC.FT.922	8G/1
Antarctic Beech Forest - Green Mountains	1I/27	
Avenue of Honour - Mt Mee	[Memorial, war - Monuments and Memorials] HC.MM.902	1C/20
Bankfoot House	[Homestead building - Residential Building] HC.RB.904	1E/38
Beerburum Scientific Area 1	[Reserve, Forestry] HC.FT.927	1E/22
Beerburum Soldier Settlement Complex	[Well / tank / trough for stock - Farming/Grazing] HC.FG.910 [Cemetery - Cemeteries and Burial Sites] HC.CB.901	1E/52
Beerwah/Beerburum Complex	[Plantation, exotic species - Forestry] HC.FT.917 [Settlement, Forest Dept - Forestry] HC.FT.912 [Arboretum, experimental farm - Forestry] HC.FT.901	1E/51
Binna Burra Cultural Landscape	[House, Guest / Boarding - Hotels, Motels and Inns] HC.HM.901 [Landscape, cultural - Landscape]	1I/56
Blackall Range Aesthetic Precinct	[Landscape, cultural - Landscape] HC.LS.901 [Natural wetlands and rivers] NC.W&R [Natural Landforms] NC.L [Natural Flora species] NC.FL [Natural Fauna species] NC.FA	Aesthetic2
Boolboonda Tunnel	[Tunnel, railway - Rail Transport] HC.RL.904	6Q/1
Brandon's Sawmill Site, Bellthorpe	[Mill, sawmill - Forestry] HC.FT.920	1D/1
Bribie Island Aesthetic Precinct	[Natural coast] NC.CEC [Landscape, cultural - Landscape] HC.LS.901 [Natural wetlands and rivers] NC.W&R [Natural Landforms] NC.L [Natural Flora species] NC.FL [Natural Fauna species] NC.FA	Aesthetic3
Brisbane Forest Park Cultural Landscape	[Reservoir / Dam, water supply - Public Utilities] HC.UT.904 [Landscape, cultural - Landscape] HC.LS.901 [Natural wetlands and rivers] NC.W&R [Natural Landforms] NC.L [Natural Flora species] NC.FL [Natural Fauna species] NC.FA	1N/29
Brooyar Fire Tower No. 11	[Tower, fire lookout - Forestry] HC.FT.909	4Q/6
Buderim Mountain Aesthetic Precinct	[Landscape, cultural - Landscape] HC.LS.901 [Natural wetlands and rivers] NC.W&R [Natural Landforms] NC.L [Natural Flora species] NC.FL [Natural Fauna species] NC.FA	Aesthetic4
Bunya Mountains Aesthetic Precinct	[Landscape, cultural - Landscape] HC.LS.901 [Natural wetlands and rivers] NC.W&R [Natural Landforms] NC.L [Natural Flora species] NC.FL [Natural Fauna species] NC.FA	Aesthetic1

Bunya Mountains Cultural Landscape	[Natural Vegetation, Forest - rainforest communities] NC.VGS.01	8B/34
Bunyaville Military Bunker	1A/2	
Burleigh Heads Aesthetic Precinct	[Natural coast] NC.CEC [Landscape, cultural - Landscape] HC.LS.901 [Natural Landforms] NC.L [Natural Flora species] NC.FL [Natural Fauna species] NC.FA	Aesthetic7
Camp Mountain Rail Crash Cairn	[Memorial - Monument and Memorials] HC.MM.901	1N/11.2
Campbellville Sawmill Complex	[Settlement, sawmill - Forestry] HC.FT.915 [Cemetery / grave railings - Cemeteries and Burial Sites] HC.CB.904	1E/53
Cania Gorge Aesthetic Precinct	[Landscape, cultural - Landscape] HC.LS.901 [Natural wetlands and rivers] NC.W&R [Natural Landforms] NC.L [Natural Flora species] NC.FL [Natural Fauna species] NC.FA	Aesthetic6
Canungra Gorge Aesthetic Precinct	[Landscape, cultural - Landscape] HC.LS.901 [Natural wetlands and rivers] NC.W&R [Natural Landforms] NC.L [Natural Flora species] NC.FL [Natural Fauna species] NC.FA	Aesthetic8
Canungra Tramway Complex	[Tramway, timber - Forestry] HC.FT.930	1I/59
Cedar Creek (Tamborine) Aesthetic Precinct	[Landscape, cultural - Landscape] HC.LS.901 [Natural wetlands and rivers] NC.W&R [Natural Landforms] NC.L [Natural Flora species] NC.FL [Natural Fauna species] NC.FA	Aesthetic9
Charlie Moreland State Forest Park	[Camping ground- Hotels / Motels / Inns] HC.HM.902 [Picnic ground / Recreation Reserve - Recreation and Entertainment] HC.RE.903	4E/12
Conondale Range Aesthetic Precinct	[Landscape, cultural - Landscape] HC.LS.901 [Natural wetlands and rivers] NC.W&R [Natural Landforms] NC.L [Natural Flora species] NC.FL [Natural Fauna species] NC.FA	Aesthetic10
Cooloolo Aesthetic Precinct	[Natural coast] NC.CEC [Landscape, cultural - Landscape] HC.LS.901 [Natural wetlands and rivers] NC.W&R [Natural Landforms] NC.L [Natural Flora species] NC.FL [Natural Fauna species] NC.FA	Aesthetic11
Cooloolo Tramway Complex	[Tramway, timber - Forestry] HC.FT.930	5N/22
Cossart's Sawmill, Dugandan	[Mill, sawmill - Forestry] HC.FT.920	1W/1
Cressbrook Tramway	[Tramway, timber - Forestry] HC.FT.930	8N/1.1
Crohamhurst Complex	[Homestead complex - Farming/Grazing] HC.FG.904 [School - Education] HC.ED.901	1F/3
Crow's Nest Falls National Park Aesthetic Precinct	[Landscape, cultural - Landscape] HC.LS.901 [Natural wetlands and rivers] NC.W&R [Natural Landforms] NC.L [Natural Flora species] NC.FL [Natural Fauna species] NC.FA	Aesthetic15

Cunningham's Gap & Highway	[Landscape, cultural - Landscape] HC.LS.901[Natural wetlands and rivers] NC.W&R [Natural Landforms] NC.L [Natural Flora species] NC.FL [Natural Fauna species] NC.FA	1P/22
Currumbin Valley Aesthetic Complex	[Natural coast] NC.CEC [Landscape, cultural - Landscape] HC.LS.901[Natural wetlands and rivers] NC.W&R [Natural Landforms] NC.L [Natural Flora species] NC.FL [Natural Fauna species] NC.FA	Aesthetic16
D'Aguilar Range Aesthetic Precinct	[Landscape, cultural - Landscape] HC.LS.901[Natural wetlands and rivers] NC.W&R [Natural Landforms] NC.L [Natural Flora species] NC.FL [Natural Fauna species] NC.FA	Aesthetic17
Daisy Hill Charcoal Pit	[Pit, charcoal - Forestry] HC.FT.904	1B/5
Diana's Bath	[Natural Landforms] NC.L	1C/19
Elgin Vale Sawmill	[Mill, sawmill - Forestry] HC.FT.920	4W/1
Engraved Kauri Pine, Mothar Mountain	[Natural Vegetation, Forest - non-rainforest communities] NC.VGS.02	5Q/5
Fleming's Sawmill	[Mill, sawmill - Forestry] HC.FT.920	6M/1
Foreign Legion Camp Site	[Camp, forest workers - Forestry] HC.FT.922	4E/3
Former Mt Mee Married Quarters	[Camp, forest workers - Forestry] HC.FT.922	1C/21.1
Former Maryborough - Gayndah Road (Maryborough - Degilbo Section)	[Road - Road Transport] HC.RD.902	5A/7
Former St Mary's Forest Station / Sandy Creek Outdoor Learning Centre	[Office, Forestry Department] HC.FT.913 [Camp, forest workers - Forestry] HC.FT.922, [School - Education] HC.ED.901	5H/1
Fraser Island Cultural Landscape	[Natural coast] NC.CEC [Natural Fauna species] NC.FA [Natural Flora species] NC.FL [Natural Vegetation, non-forest] NC.VGS [Natural Vegetation, Forest - non-rainforest communities] NC.VGS.02 [Natural Vegetation, Forest - rainforest communities] NC.VGS.0	5AA/45
Glassford Mining Area	[Mining, underground mine - Mining / Mineral processing] HC.MN.924	6D/1
Glasshouse Mountains Cultural Landscape	[Landscape, cultural - Landscape] HC.LS.901[Natural wetlands and rivers] NC.W&R [Natural Landforms] NC.L [Natural Flora species] NC.FL [Natural Fauna species] NC.FA [Natural Geology] NC.G	1G/1
Goodnight Scrub	[Natural Vegetation, Forest - non-rainforest communities] NC.VGS.02	6E/9
Goomburra Timber Cutter's Hut	[Camp, forest workers - Forestry] HC.FT.922	1O/2
Grandchester Sawmill	[Mill, sawmill - Forestry] HC.FT.920	8I/2

Harry's Hut	[Hut / Shack - Residential Building] HC.RB.903 [Camping ground- Hotels / Motels / Inns] HC.HM.902	5N/9
Hill 60	[Memorial - Monument and Memorials] HC.MM.901	8L/7
Imbil Forest Station	[Arboretum, experimental farm - Forestry] HC.FT.901 [Settlement, Forest Dept - Forestry] HC.FT.912 [Plantation, indigenous species - Forestry] HC.FT.916	4E/1
Imbil Forests Aesthetic Precinct	[Landscape, cultural - Landscape] HC.LS.901[Natural wetlands and rivers] NC.W&R [Natural Landforms] NC.L [Natural Flora species] NC.FL [Natural Fauna species] NC.FA	Aesthetic20
Jimna Fire Tower	[Tower, fire lookout - Forestry] HC.FT.909	4C/8
Jimna Forests Aesthetic Precinct	[Landscape, cultural - Landscape] HC.LS.901[Natural wetlands and rivers] NC.W&R [Natural Landforms] NC.L [Natural Flora species] NC.FL [Natural Fauna species] NC.FA	Aesthetic21
Jimna Township Complex	[Settlement, sawmill - Forestry] HC.FT.915 [Mill, sawmill - Forestry] HC.FT.920	4C/20
John Bidwill's Grave and remnant garden	[Plantings, exotic - Parks, Gardens and Trees] HC.PG.906 [Cemetery - Cemeteries and Burial Sites] HC.CB.901	5AG/1
KCB Tree	[Tree, blazed - Explorer / Surveyor] HC.ES.901	1AA/1
Kenilworth Forest Station	[Office, Forestry Department] HC.FT.913 [Camp, forest workers - Forestry] HC.FT.922	4E/19
Kondalilla Falls National Park Aesthetic Precinct	[Landscape, cultural - Landscape] HC.LS.901[Natural wetlands and rivers] NC.W&R [Natural Landforms] NC.L [Natural Flora species] NC.FL [Natural Fauna species] NC.FA	Aesthetic22
Kroombit Tops Aesthetic Precinct	[Landscape, cultural - Landscape] HC.LS.901[Natural wetlands and rivers] NC.W&R [Natural Landforms] NC.L [Natural Flora species] NC.FL [Natural Fauna species] NC.FA	Aesthetic23
Lahey's and Enright's Sawmill	[Mill, sawmill - Forestry] HC.FT.920	1I/54.2
Lamington National Park Aesthetic Precinct	[Landscape, cultural - Landscape] HC.LS.901[Natural wetlands and rivers] NC.W&R [Natural Landforms] NC.L [Natural Flora species] NC.FL [Natural Fauna species] NC.FA	Aesthetic24
Lamington National Park Cultural Landscape		1I/57
Many Peaks Range Aesthetic Precinct	[Landscape, cultural - Landscape] HC.LS.901[Natural wetlands and rivers] NC.W&R [Natural Landforms] NC.L [Natural Flora species] NC.FL [Natural Fauna species] NC.FA	Aesthetic25
Maroochy Remnant Bushland Aesthetic Precinct	[Landscape, cultural - Landscape] HC.LS.901[Natural wetlands and rivers] NC.W&R [Natural Landforms] NC.L [Natural Flora species] NC.FL [Natural Fauna species]	Aesthetic46

	NC.FA	
Mary Cairncross Park, Blackall Range	[Picnic ground / Recreation Reserve - Recreation and Entertainment] HC.RE.903	1R/1
Mill Point Complex	[Mill, sawmill - Forestry] HC.FT.920, [Disaster site - eg explorer, mining] HC.ES.903	5N/2
Moogerah Peaks Aesthetic Precinct	[Landscape, cultural - Landscape] HC.LS.901[Natural wetlands and rivers] NC.W&R [Natural Landforms] NC.L [Natural Flora species] NC.FL [Natural Fauna species] NC.FA	Aesthetic26
Moreton Island Aesthetic Precinct	[Natural coast] NC.CEC [Landscape, cultural - Landscape] HC.LS.901[Natural wetlands and rivers] NC.W&R [Natural Landforms] NC.L [Natural Flora species] NC.FL [Natural Fauna species] NC.FA	Aesthetic27
Mount Barney Aesthetic Precinct	[Landscape, cultural - Landscape] HC.LS.901[Natural wetlands and rivers] NC.W&R [Natural Landforms] NC.L [Natural Flora species] NC.FL [Natural Fauna species] NC.FA	Aesthetic28
Mount Coolum Aesthetic Precinct	[Landscape, cultural - Landscape] HC.LS.901[Natural wetlands and rivers] NC.W&R [Natural Landforms] NC.L [Natural Flora species] NC.FL [Natural Fauna species] NC.FA1	Aesthetic12
Mount Cooroy Aesthetic Precinct	[Landscape, cultural - Landscape] HC.LS.901[Natural wetlands and rivers] NC.W&R [Natural Landforms] NC.L [Natural Flora species] NC.FL [Natural Fauna species] NC.FA	Aesthetic14
Mount Lindesay Aesthetic Precinct	[Landscape, cultural - Landscape] HC.LS.901[Natural wetlands and rivers] NC.W&R [Natural Landforms] NC.L [Natural Flora species] NC.FL [Natural Fauna species] NC.FA	Aesthetic29
Mount Maroon Aesthetic Precinct	[Landscape, cultural - Landscape] HC.LS.901[Natural wetlands and rivers] NC.W&R [Natural Landforms] NC.L [Natural Flora species] NC.FL [Natural Fauna species] NC.FA	Aesthetic30
Mount Perry Ranges Aesthetic Precinct	[Landscape, cultural - Landscape] HC.LS.901[Natural wetlands and rivers] NC.W&R [Natural Landforms] NC.L [Natural Flora species] NC.FL [Natural Fauna species] NC.FA	Aesthetic31
Mt Archer Complex	[Mill, sawmill - Forestry] HC.FT.920	1C/23
Mt Binga Fire Tower	[Tower, fire lookout - Forestry] HC.FT.909	8K/9
Mt Clara Copper Smelter	4R/2	
Mt Cougal Sawmill Complex	1J/14	
Mt Mee Banana Settlement Complex	1C/22	
Mt Mee Bullock Trail	1C/7	

Mt Mee Tramway Site	[Timber extraction devices and places - Forestry] HC.FT.925	1C/4
Mungar Tramway	[Mill, sawmill - Forestry] HC.FT.920	5AE/1
Munro's Complex	8F/11	
National Bi-centennial Heritage Trail	[Road - Road Transport] HC.RD.902 [Route - Explorer] HC.ES.904	12/1
Nerang State Forest Aesthetic Precinct	[Landscape, cultural - Landscape] HC.LS.901 [Natural wetlands and rivers] NC.W&R [Natural Landforms] NC.L [Natural Flora species] NC.FL [Natural Fauna species] NC.FA	Aesthetic32
Neranwood Tramway	[Tramway, timber - Forestry] HC.FT.930	1X/1
Noosa Headland Aesthetic Precinct	[Natural coast] NC.CEC [Landscape, cultural - Landscape] HC.LS.901 [Natural wetlands and rivers] NC.W&R [Natural Landforms] NC.L [Natural Flora species] NC.FL [Natural Fauna species] NC.FA	Aesthetic33
North Stradbroke Island Aesthetic Precinct	[Natural coast] NC.CEC [Landscape, cultural - Landscape] HC.LS.901 [Natural wetlands and rivers] NC.W&R [Natural Landforms] NC.L [Natural Flora species] NC.FL [Natural Fauna species] NC.FA	Aesthetic40
O'Reilly Cultural Complex	[House, Guest / Boarding - Hotels, Motels and Inns] HC.HM.901	1I/54
Original Maryborough Site	[Landscape, cultural - Landscape] HC.LS.901	5AI/1
Peregian Aesthetic Precinct	[Natural coast] NC.CEC [Landscape, cultural - Landscape] HC.LS.901 [Natural wetlands and rivers] NC.W&R [Natural Landforms] NC.L [Natural Flora species] NC.FL [Natural Fauna species] NC.FA	Aesthetic35
Pettigrew and Sims Sawmill site, Dundathau	[Mill, sawmill - Forestry] HC.FT.920	5AD/1
Point Glorious Lookout	1V/2	
Pomona District School Memorial Forestry Plot	[Memorial - Monument and Memorials] HC.MM.901	5I/1
Queen Mary Falls Sawmill	[Mill, sawmill - Forestry] HC.FT.920	1W/2
Ravensbourne National Park Aesthetic Precinct	[Landscape, cultural - Landscape] HC.LS.901 [Natural wetlands and rivers] NC.W&R [Natural Landforms] NC.L [Natural Flora species] NC.FL [Natural Fauna species] NC.FA	Aesthetic36
Rayner's Sawmill	[Mill, sawmill - Forestry] HC.FT.920	1J/10.1
Robert's Survey Tree 'Coolya'	[Tree, blazed - Explorer / Surveyor] HC.ES.901	1I/34
Salvage Log Dump	1E/12	
Scenic Rim Aesthetic Precinct	[Landscape, cultural - Landscape] HC.LS.901 [Natural	Aesthetic38

	wetlands and rivers] NC.W&R [Natural Landforms] NC.L [Natural Flora species] NC.FL [Natural Fauna species] NC.FA	
Single Tree Fire Tower	[Tree, fire lookout - Forestry] HC.FT.911	5C/6
Site of 'Bell's Tree' Reserve	[Landscape, cultural - Landscape] HC.LS.901	5L/1
Spicers Gap Road Complex	[Road - Road Transport] HC.RD.902	1P/21
Springbrook National Park Cultural Landscape	[Landscape, cultural - Landscape] HC.LS.901[Natural wetlands and rivers] NC.W&R [Natural Landforms] NC.L [Natural Flora species] NC.FL [Natural Fauna species] NC.FA	1J/15
Springbrook Plateau Aesthetic Precinct	[Landscape, cultural - Landscape] HC.LS.901[Natural wetlands and rivers] NC.W&R [Natural Landforms] NC.L [Natural Flora species] NC.FL [Natural Fauna species] NC.FA	Aesthetic39
Springbrook Road Complex	[Road - Road Transport] HC.RD.902	1J/16
Stinson Complex	1I/55	
Sunday Creek Complex	[School - Education] HC.ED.901 [Settlement, Forest Dept - Forestry] HC.FT.912 [Settlement, sawmill - Forestry] HC.FT.915 [Mining, alluvial workings - Mining / Mineral processing] HC.MN.903	4C/21
Takilberan Rock	[Landscape, cultural - Landscape] HC.LS.901	6S/1
Tamborine Mountain Aesthetic Precinct	[Landscape, cultural - Landscape] HC.LS.901[Natural wetlands and rivers] NC.W&R [Natural Landforms] NC.L [Natural Flora species] NC.FL [Natural Fauna species] NC.FA	Aesthetic42
Tamborine National Park Cultural Landscape	1Q/16	
Teddington Scrub and Weir	[Picnic ground / Recreation Reserve - Recreation and Entertainment] HC.RE.903 [Weir - Public Utilities] HC.UT.910	5AH/1
Tiaro Sawmill	[Mill, sawmill - Forestry] HC.FT.920	5AF/1
Timber Corporation Sawmill, Nanango	[Mill, sawmill - Forestry] HC.FT.920	8M/8
Town of 1770 Environs Cultural Landscape	[Natural coast] NC.CEC [Landscape, cultural - Landscape] HC.LS.901[Natural wetlands and rivers] NC.W&R [Natural Landforms] NC.L [Natural Flora species] NC.FL [Natural Fauna species] NC.FA	6R/1
Upper Coomera Valley Aesthetic Precinct	[Landscape, cultural - Landscape] HC.LS.901[Natural wetlands and rivers] NC.W&R [Natural Landforms] NC.L [Natural Flora species] NC.FL [Natural Fauna species] NC.FA	Aesthetic13
Upper Numinbah Valley Cultural Landscape	[Landscape, cultural - Landscape] HC.LS.901[Natural wetlands and rivers] NC.W&R [Natural Landforms] NC.L [Natural Flora species] NC.FL [Natural Fauna species]	1L/12

	NC.FA	
Upper Tallebudgera Valley Aesthetic Precinct	[Landscape, cultural - Landscape] HC.LS.901[Natural wetlands and rivers] NC.W&R [Natural Landforms] NC.L [Natural Flora species] NC.FL [Natural Fauna species] NC.FA	Aesthetic41
Waterview Sawmill	[Mill, sawmill - Forestry] HC.FT.920	6L/1
Wongi Waterholes	[Natural wetlands and rivers] NC.W&R	5A/5
Woco Creek Trestle Bridge	[Bridge, railway - Rail Transport] HC.RL.902	5C/4
Wright's Quarry Complex	[Quarry - Mining / Mineral processing] HC.MN.916	8I/3
Yandina Remnant Forest Aesthetic Precinct	[Landscape, cultural - Landscape] HC.LS.901[Natural wetlands and rivers] NC.W&R [Natural Landforms] NC.L [Natural Flora species] NC.FL [Natural Fauna species] NC.FA	Aesthetic43

Yarraman Forests Aesthetic Precinct	[Landscape, cultural - Landscape] HC.LS.901[Natural wetlands and rivers] NC.W&R [Natural Landforms] NC.L [Natural Flora species] NC.FL [Natural Fauna species] NC.FA	Aesthetic44
-------------------------------------	--	-------------

Yarraman Tramway Complex	[Tramway, timber - Forestry] HC.FT.930	8D/8
--------------------------	--	------

Forest Assessment Unit, Conservation Strategy Branch, Dept of Environment 9 Oct 98

Summary List of Places and their Significance Status

PlaceName	Category	DoEFileRef
Significant (part of National Estate place)		
1988 Bi-Centennial Reenactment Plaque - Main Range	[Memorial - Monument and Memorials] HC.MM.901	1P/12
A & D Munro's Tramway	[Bridge, timber tramway - Forestry] HC.FT.931	8H/1
Alphen Inn Site	[Camping ground- Hotels / Motels / Inns] HC.HM.902	1P/13
Andersen's Tramway / Haulage System	[Tramway, timber - Forestry] HC.FT.930	8B/15
Antarctic Beech Grove - Springbrook	[Natural Vegetation, Forest - rainforest communities] NC.VGS.01	1J/2.1
Arthur Groom Memorial	[Memorial - Monument and Memorials] HC.MM.901	1I/39
Balbi Inn Site	[Camping ground- Hotels / Motels / Inns] HC.HM.902	1P/14
Beerburrum Cemetery R515	[Cemetery - Cemeteries and Burial Sites] HC.CB.901	1E/32
Beerburrum Forestry Office	[Office, Forestry Department] HC.FT.913	1E/30
Beerburrum Hospital	1E/17	
Beerburrum Nursery	1E/13	
Beerwah Forest Station	[Arboretum, experimental farm - Forestry] HC.FT.901 [Office, Forestry Department] HC.FT.913	1E/23
Bellbird Lookout	1I/48	
Bernard O'Reilly Memorial	[Memorial - Monument and Memorials] HC.MM.901	1I/24
Best-of-All Lookout	1J/2	
Binna Burra Mountain Lodge	[House, Guest / Boarding - Hotels, Motels and Inns] HC.HM.901	1I/47
Binna Burra Mountain Lodge - Bellbird Clearing	1I/47.10	
Binna Burra Mountain Lodge Cabins	[House, Guest / Boarding - Hotels, Motels and Inns] HC.HM.901	1I/47.1
Binna Burra Mountain Lodge Environmental Playground	1I/47.5	
Binna Burra Mountain Lodge Sawmill Shed	[Timber machinery, eg sawblade, steam engine - Forestry] HC.FT.914	1I/47.9
Binna Burra QNPWS Office & Information Centre	1I/42	
Bithongabel Lookout	1I/30	
Bogimbah Log Dump	5AA/35	

Boombana Picnic Area	[Picnic ground / Recreation Reserve - Recreation and Entertainment] HC.RE.903	1N/5
Broomfield Township Site	5A/8	
Buff Creek Landing Site	5AA/9	
Bunya Mountains Conservation Park	[Natural Vegetation, non-forest] NC.VGS	8B/21
Burton's Well	[Well - Public Utilities] HC.UT.911	8B/1
Burton's Well - Old Stone & Timber Sign	[Camping ground- Hotels / Motels / Inns] HC.HM.902 [Well - Public Utilities] HC.UT.911	[Well 8B/1.2
Campbellville Cemetery	[Cemetery - Cemeteries and Burial Sites] HC.CB.901	1E/2
Campbellville Sawmill Site	[Mill, sawmill - Forestry] HC.FT.920	1E/9
Canungra Tramway	[Tramway, timber - Forestry] HC.FT.930	1I/59.2
Canyon Lookout	1J/7.2	
Carbine's Chute	8B/14	
Cattle Creek Sawmill	[Mill, sawmill - Forestry] HC.FT.920	8B/2
Cedarvale	8B/30.1	
Cemetery, Mill Point	[Cemetery - Cemeteries and Burial Sites] HC.CB.901	5N/2.1
Central Station Forestry Camp	[Office, Forestry Department] HC.FT.913 [Camp, forest workers - Forestry] HC.FT.922 [Camping ground- Hotels / Motels / Inns] HC.HM.902	5AA/17
Christmas Camp 1933	[Camping ground- Hotels / Motels / Inns] HC.HM.902	1I/47.7
Clarrie Trist Dedication Plaque- Canyon Falls	[Memorial - Monument and Memorials] HC.MM.901	1J/7.1
Commemorative Hoop Pines	[Camping ground- Hotels / Motels / Inns] HC.HM.902	1I/47.8
Cooloola Creek Terminus Site	[Tramway, timber - Forestry] HC.FT.930	5N/22.3
Coolooloi Creek Sandmining Jetty	[Jetty / Pier - Water Transport] HC.WT.905	5AA/2
Corduoy Crossing, Seary's Creek	5N/22.2	
Crohamhurst Observatory	1F/4	
Crohamhurst School Site Plantings	[School - Education] HC.ED.901	1F/1
Curved Bridge	[Bridge, road - Road Transport] HC.RD.903	1J/10
Cut and fill, Cooloola Tramway	[Tramway, timber - Forestry] HC.FT.930	5N/22.5
Deep Creek Log Dump	5AA/10	
Dennings Sawmill Site	[Mill, sawmill - Forestry] HC.FT.920	8B/23

Dilli Village	[Camping ground- Hotels / Motels / Inns] HC.HM.902	5AA/8
Dilli Village Machinery Shed	5AA/8.1	
Dipuying Nursery Site	5AA/31.1	
Duck Creek Road	[Road - Road Transport] HC.RD.902	1I/16
Environmental Study Centre (Groom's Cabin)	1I/47.6	
Eucalyptus Quadrangulata Stand - O'Reilly's	[Natural Vegetation, non-forest] NC.VGS	1I/12
First Resident of Tamborine Mountain Memorial	[Memorial - Monument and Memorials] HC.MM.901	1Q/15
Flying Fox - Binna Burra Mountain Lodge	[House, Guest / Boarding - Hotels, Motels and Inns] HC.HM.901	1I/47.3
Forest Camp - Gwongoorool Pool	[Camp, forest workers - Forestry] HC.FT.922	1I/41
Forestry Camp - Green Mountains	[Camp, forest workers - Forestry] HC.FT.922	1I/26
Forestry Camp - Palm Grove	[Camp, forest workers - Forestry] HC.FT.922	1Q/5.1
Former Ungowa Forestry Office	[Office, Forestry Department] HC.FT.913 [Camp, forest workers - Forestry] HC.FT.922	5AA/11
Fountain Falls	[Natural Landforms] NC.L	1I/44
Fraser Island Commando School Site	[Ground, military parade / training - Defence and Military] HC.ML.902	5AA/24
Garry's Log Dump	5AA/5	
Gertrude's Grave	[Grave, isolated, incl. explorer - Cemeteries / Burial Sites] HC.CB.906	8B/12
Goat Track - Binna Burra Mountain Lodge	[Road - Road Transport] HC.RD.902	1I/47.4
Goodnight Scrub Forestry Barracks Site	[Camp, forest workers - Forestry] HC.FT.922	6E/1.2
Goodnight Scrub Forestry Office Site	[Office, Forestry Department] HC.FT.913 [Camp, forest workers - Forestry] HC.FT.922	6E/1.1
Goomoolahra Falls Sign	1J/5	
Governor's Chair, Spicer's Gap	[Natural Landforms] NC.L	1P/7
Great Bunya Sawmill Site	[Mill, sawmill - Forestry] HC.FT.920	8B/7
Gus Kouskos Memorial	[Memorial - Monument and Memorials] HC.MM.901	1I/49
Hardy's Buckboard - Springbrook NP Information Centre	1J/1.2	
Hardy's Lookout Pioneer's Memorial Cairn	[Memorial - Monument and Memorials] HC.MM.901	1J/8
Harold Jenyns Lookout, Eagle Heights	1Q/6	

Hilda Curtis Memorial	[Memorial - Monument and Memorials] HC.MM.901	1Q/8
Hook Point Old Sandmining Road	[Road - Road Transport] HC.RD.902	5AA/2.1
Imbil Hoop Pine Grove	[Plantation, indigenous species - Forestry] HC.FT.916 [Memorial - Monument and Memorials] HC.MM.901	4E/1.1
Jack Stevens Annexe (NPWS Tamborine NP)		1Q/7
Jetty ruins, Poverty Point Terminus	[Jetty / Pier - Water Transport] HC.WT.905	5N/22.4
Jimna Gold Diggings	[Mineral discovery site] HC.MN.910 [Landscape, cultural - Mining / Mineral processing] HC.MN.901	4C/11
Jimna Sawmill Site	[Mill, sawmill - Forestry] HC.FT.920 [Settlement, sawmill - Forestry] HC.FT.915	4C/2
Jimna Township	[Settlement, sawmill - Forestry] HC.FT.915	4C/15
Jimna Tramway	[Tramway, timber - Forestry] HC.FT.930	4C/14
Joalah Lookout	[Natural montane / alpine area] NC.AL	1I/45
John Sydney gympie gympie tree		8B/13
Jolly's Lookout	[Picnic ground / Recreation Reserve - Recreation and Entertainment] HC.RE.903	1N/6
Jones Homestead Site	[House - Residential Building] HC.RB.902	1F/2
Kalliwa Camping Area	[Camping ground- Hotels / Motels / Inns] HC.HM.902	6E/4
Kalliwa Hut	[Camp, forest workers - Forestry] HC.FT.922	6E/5
Kamarun Lookout / Romeo Lahey Memorial	[Memorial - Monument and Memorials] HC.MM.901	1I/17.1
Kropps Sawmill Site	[Mill, sawmill - Forestry] HC.FT.920	1C/1.1
Lahey's Canungra Tramway Tunnel	[Tramway, timber - Forestry] HC.FT.930	1I/59.1
Lamington Exchange & Lamington Station	[Disaster site - eg explorer, mining] HC.ES.903	1I/37
Lamington National Park Walking Tracks		1I/50
Luke O'Reilly's Residence	[Homestead complex - Farming/Grazing] HC.FG.904	1I/10
MacDonald Sign - MacDonald Park		1Q/13
Maiala National Park Picnic Area	[Picnic ground / Recreation Reserve - Recreation and Entertainment] HC.RE.903	1N/3
Main Range Hotel	[Camping ground- Hotels / Motels / Inns] HC.HM.902	1P/18
Manorine National Park Picnic Area	[Picnic ground / Recreation Reserve - Recreation and Entertainment] HC.RE.903	1N/4
Marble Mine Site		6E/7

McKenzie's Jetty	[Jetty / Pier - Water Transport] HC.WT.905	5AA/23.2
McKenzie's Log Dump	5AA/23.1	
McKenzie's Timber Operations Site	[Mill, sawmill - Forestry] HC.FT.920	5AA/23
McKenzie's Tramway	[Tramway, timber - Forestry] HC.FT.930	5AA/23.3
Mitchell Nursery Site	[Arboretum, experimental farm - Forestry] HC.FT.901	5AA/32
Moss's Well	[Well - Public Utilities] HC.UT.911	1P/15
Mt Archer Bullock Wagons & timber chutes	[Timber extraction devices and places - Forestry] HC.FT.925	1C/1
Mt Cougal Bush Sawmill	[Mill, sawmill - Forestry] HC.FT.920	1J/9
Mt Cougal Log Bridges	[Bridge, foot - Road Transport] HC.RD.901	1J/9.2
Mt Cougal Logging and Snigging Tracks	[Track, timber - Forestry] HC.FT.932	1J/9.3
Mt Cougal Sawmill Residence	[House - Residential Building] HC.RB.902	1J/9.1
Mt Mee West Banana Blocks Site	1C/5	
Mt Mee West Banana Settlement	1C/6	
Mt Mee West Banana Settlement Huts	1C/24	
Mt Mowbullen Guest House	[House, Guest / Boarding - Hotels, Motels and Inns] HC.HM.901	8B/32
Munro's Argyle Sawmill	[Mill, sawmill - Forestry] HC.FT.920	8F/10.1
Munro's camp	[Camping ground- Hotels / Motels / Inns] HC.HM.902	8B/18
Natural Rock Water Hole	[Natural Geology] NC.G	1I/44.3
O'Reilly Cattle Crush	[Yarding - Farming/Grazing] HC.FG.912	1I/13
O'Reilly Dairy	[Homestead complex - Farming/Grazing] HC.FG.904	1I/11
Old Entry Sign - Witches Falls	1Q/10.2	
Old Goodnight Scrub Forest Station Site	[Office, Forestry Department] HC.FT.913 [Camp, forest workers - Forestry] HC.FT.922	6E/8
Old Sign - Palm Grove (Main Entrance)	1Q/4	
Old Telegraph Line - Boonah to Maryvale	1P/8	
Old track signage: Darlington Range Track	1I/44.1	
Old Walking Track Sign - Palm Grove (Central Avenue Entry)	1Q/3	
Old Yidney Log Dump	5AA/41	
Oldest Antarctic Beech (Green Mountains)	[Natural Vegetation, Forest - rainforest communities]	1I/29

	NC.VGS.01	
One Tree Hill Fire Cabin	[Tower, fire lookout - Forestry] HC.FT.909	6E/2
Paddy's Camp Site	[Camp, forest workers - Forestry] HC.FT.922	6E/3
Palm Grove Rock Wall	1Q/4.1	
Palm Tree Sawmill Site	[Mill, sawmill - Forestry] HC.FT.920	8H/2
Pat & Luke O'Reilly's selections	[Homestead complex - Farming/Grazing] HC.FG.904	1I/7
Pat's Cabin	[Homestead complex - Farming/Grazing] HC.FG.904	1I/8
Petrie's Camp Old Forest Station Site	[Office, Forestry Department] HC.FT.913	5AA/31
Pile Valley	[Natural Vegetation, Forest - rainforest communities] NC.VGS.01 check	5AA/18
Pioneer Graves, Main Range NP	[Cemetery - Cemeteries and Burial Sites] HC.CB.901	1P/11
Plaque - Lepidozamia Grove	[Memorial - Monument and Memorials] HC.MM.901	1Q/11
Postan's Logging Camp	[Camp, forest workers - Forestry] HC.FT.922	5AA/26
Poyungan Creek Log Dump	5AA/25	
Purling Brook Falls Interpretative Sign	1J/3.1	
Purling Brook Falls Lookout	[Picnic ground / Recreation Reserve - Recreation and Entertainment] HC.RE.903	1J/3
Purling Brook Falls Main Shelter Shed	[Picnic ground / Recreation Reserve - Recreation and Entertainment] HC.RE.903	1J/3.2
Putthoo Log Dump	5AA/40	
Queensland Naturalist Club Cairn	[Memorial - Monument and Memorials] HC.MM.901	1I/28
R.M. Collins Memorial Bird Bath	[Memorial - Monument and Memorials] HC.MM.901	1I/23
Rafting Ground, Seary's Creek	5N/22.1	
Robert Martin Collins Memorial Seat	[Memorial - Monument and Memorials] HC.MM.901	1I/40
Romeo Watkins Lahey Memorial	[Memorial - Monument and Memorials] HC.MM.901	1I/19
Site of steam engine and winch	[Tramway, timber - Forestry] HC.FT.930	5N/22.6
Soldiers Road	[Road - Road Transport] HC.RD.902	8B/3
Spicer's Gap Road	[Road - Road Transport] HC.RD.902	1P/6
Spicer's Gap Road Plaque	[Memorial - Monument and Memorials] HC.MM.901	1P/6.1
Springbrook Forestry Camp	[Camp, forest workers - Forestry] HC.FT.922	1J/6
Springbrook Information Centre	[School - Education] HC.ED.901	1J/1

St Joseph's Church, Green Mountains	[Church - Religion] HC.RG.901	1I/25
Stinson Evacuation Site	[Disaster site - eg explorer, mining] HC.ES.903	1I/31
Stinson Wreck and Gravesite	[Grave, isolated, incl. explorer - Cemeteries / Burial Sites] HC.CB.906 [Disaster site - eg explorer, mining] HC.ES.903	1I/36
Stockyard Creek Track	[Track, timber - Forestry] HC.FT.932	1I/3
Stretcher Track	[Disaster site - eg explorer, mining] HC.ES.903	1I/31.1
Sunday Creek Environmental Centre	[School - Education] HC.ED.901 [Office, Forestry Department] HC.FT.913 [Camp, forest workers - Forestry] HC.FT.922 [Mill, sawmill - Forestry] HC.FT.920	4C/10
The 'Heartbreaker'	[Road - Road Transport] HC.RD.902	1I/18
The Beacon	[Cairn - Surveyor] HC.ES.902	1Q/9
The Stump - Springbrook NP Information Centre	[Tree, stumps - Forestry] HC.FT.923	1J/1.1
Timber Cutting Camp 1860s-Horse Gully	[Camp, forest workers - Forestry] HC.FT.922	8B/11
Tobys Gap Airstrip	[Airfield / Landing strip - Air Transport] HC.AR.901	5AA/7
Uncle Pat's Log Cabin	[Homestead complex - Farming/Grazing] HC.FG.904	1I/14
Ungowa Boatshed and Jetty	[Jetty / Pier - Water Transport] HC.WT.905	5AA/11.1
Urang Creek Log Dump	5AA/29	
Urang Tramway	[Tramway, timber - Forestry] HC.FT.930	5AA/30
Wanggoolba Forest Station Site	[Office, Forestry Department] HC.FT.913 [Camp, forest workers - Forestry] HC.FT.922	5AA/16
Wanggoolba Log Dump	5AA/14	
Wanggoolba Nursery Site	5AA/16.1	
Wanggoolba Tramway	[Tramway, timber - Forestry] HC.FT.930	5AA/15
Water Sign on Darlington Range Walking Track	[Water Catchment Area - Public Utilities] HC.UT.912	1I/44.2
Water Trough Gully	[Well - Public Utilities] HC.UT.911	1J/11
Wengenville Bullock Wagon	[Timber extraction devices and places - Forestry] HC.FT.925	8A/2
Wengenville Sawmill and Township	[Mill, sawmill - Forestry] HC.FT.920 [Settlement, sawmill - Forestry] HC.FT.915	8A/1
Westray's Grave	[Grave, isolated, incl. explorer - Cemeteries / Burial Sites] HC.CB.906	1I/35

Win Bristow Garden Walk	1I/47.2	
Witches Chase Entrance Pillars	[Picnic ground / Recreation Reserve - Recreation and Entertainment] HC.RE.903	1Q/10
Witches Falls Shelter Shed	[Picnic ground / Recreation Reserve - Recreation and Entertainment] HC.RE.903	1Q/10.1
Wright's Helidon Quarry	[Quarry - Mining / Mineral processing] HC.MN.916	8I/1
Wright's Special Lease	[Quarry - Mining / Mineral processing] HC.MN.916	8I/1.1
Yarraman Stables Camp	[Tramway, timber - Forestry] HC.FT.930 [Camp, forest workers - Forestry] HC.FT.922	8D/3
Yarraman Tramway	[Tramway, timber - Forestry] HC.FT.930	8D/4
Forest Assessment Unit, Conservation Strategy Branch, Dept of Environment		9 Oct 98

Summary List of Places and their Significance Status

PlaceName	Category	DoEFileRef
Significant		
A Flat Forestry Camp / Education Centre	[Settlement, Forest Dept - Forestry] HC.FT.912	4H/4
Amamoor Ck Recreation Area	[Camping ground- Hotels / Motels / Inns] HC.HM.902	4I/6
Amamoor Forest Station	[Office, Forestry Department] HC.FT.913 [Camp, forest workers - Forestry] HC.FT.922	4I/11
Argyle Homestead	[Homestead building - Residential Building] HC.RB.904	8F/10
Austinville Forestry Station	[Camp, forest workers - Forestry] HC.FT.922 [Office, forestry department] HC.FT.913	1K/1
Avenue of Bunya Pines	8B/5	
Bauple SF Old Man Tree	5F/1	
Bert Rankin's Dairy Farm	[Homestead complex - Farming/Grazing] HC.FG.904	1I/43.1
Bert Rankin's Homestead	[Homestead complex - Farming/Grazing] HC.FG.904	1I/43
Bill Muller's Ashes	[Grave, isolated, incl. explorer - Cemeteries / Burial Sites] HC.CB.906	1I/39.1
Bunyaville Environmental Education Centre	[School - Education] HC.ED.901	1A/3
Byron Creek Falls	[Natural Landforms] NC.L	1C/15
Cainbale Firestone Rings	1I/15	
Cattle Lease No 1 - Pechey	[Yarding - Farming/Grazing] HC.FG.912	8F/6
Cattle Lease No 2 - Pechey	[Yarding - Farming/Grazing] HC.FG.912	8F/3
Chandos Guest House	[House, Guest / Boarding - Hotels, Motels and Inns] HC.HM.901	1J/4
Charcoal Pits - Durikai SF	[Pit, charcoal - Forestry] HC.FT.904	2B/1
Charcoal pits - Pechey	[Pit, charcoal - Forestry] HC.FT.904	8F/4
Coolloothin Ck School Site	[School - Education] HC.ED.901	5K/7
Crows Ash Stump - O'Reilly's	1I/6	
Doggerell Tree	5M/1	
Durikai Gold Mine	[Mining, underground mine - Mining / Mineral processing] HC.MN.924	2B/2
Explosives Magazine, Mt Cooroora	[Magazine, powder - Mining / Mineral processing] HC.MN.927	5J/2
Forestry Camp - Durikai	[Camp, forest workers - Forestry] HC.FT.922	2B/4

Forestry Camp - Leyburn SF	[Camp, forest workers - Forestry] HC.FT.922	2A/2
Fossil Site - Durikai SF	2B/5	
Googa Creek Outdoor Education Centre	8K/6	
Green Mountains Botanical Gardens	[Landscape, cultural - Landscape] HC.LS.901	1I/22
Greens Bunya Park Homestead	[Homestead complex - Farming/Grazing] HC.FG.904	8B/9
Halliday Creek Stone Walls/Mining Site	[Mining, alluvial workings - Mining / Mineral processing] HC.MN.903	6A/1
Hancock's Sawmill	[Mill, sawmill - Forestry] HC.FT.920	1C/12
International Truck - Mt Glorious	[Timber extraction devices and places - Forestry] HC.FT.925	1N/18
Joe's Place - 'The Kiosk'	[Hut / Shack - Residential Building] HC.RB.903	8B/30
Koala House Education Centre	[School - Education] HC.ED.901	1B/8
Kroombit Tops NP Plane Crash Site	[Disaster site - eg explorer, mining] HC.ES.903	6K/1
Lamington NPWS - Green Mountains Section	1I/58	
Lightning Strike Site	[Disaster site - eg explorer, mining] HC.ES.903	1I/46
Living Stump (Dandabah Picnic Ground)	[Tree, stumps - Forestry] HC.FT.923	8B/26
Loading ramp - Mt Glorious	[Timber extraction devices and places - Forestry] HC.FT.925	1N/19
Mine Shafts	[Mining, underground mine - Mining / Mineral processing] HC.MN.924	6A/5
Miners Huts Site	[Hut / Shack - Residential Building] HC.RB.903	6A/3
Mooloolah Tunnel	[Tunnel, railway - Rail Transport] HC.RL.904	1S/1
Mt Arum to Golden Boulders Mines - Link Track	[Road - Road Transport] HC.RD.902	1N/13
Mt Binga Environmental Education Centre	[School - Education] HC.ED.901	8K/1
Mt Cordeaux Gold Mine	[Mining, underground mine - Mining / Mineral processing] HC.MN.924 [Mining, open-cut - Mining / Mineral processing]	1P/10
Mt Mee Cemetery	[Cemetery - Cemeteries and Burial Sites] HC.CB.901	1C/9
Mt Mee Forestry Office & Gantry Day Use Area	[Office, Forestry Department] HC.FT.913	1C/21
Mt Victoria Homestead	[Homestead complex - Farming/Grazing] HC.FG.904	8B/6
Old Cattle Grid - Durikai SF	[Camp, forest workers - Forestry] HC.FT.922	2B/3
Pages Pinnacle	[Natural Landforms] NC.L	1L/11

Palen Creek Forestry Barracks	[Camp, forest workers - Forestry] HC.FT.922 [Office, Forestry Department] HC.FT.913	1T/2
Palen Creek Prison Farm	1T/1	
Palen Creek Prison Farm Grazing Lease	[Yarding - Farming/Grazing] HC.FG.912	1T/5
Pat's Bluff	[Landscape, cultural - Landscape] HC.LS.901	1I/38
Perseverance Gold Mine No. 1	[Mining, underground mine - Mining / Mineral processing] HC.MN.924	1N/24
Perseverance Gold Mine No. 2	[Mining, underground mine - Mining / Mineral processing] HC.MN.924	1N/25
Perseverance Gold Mine No. 3	[Mining, underground mine - Mining / Mineral processing] HC.MN.924	1N/26
Perseverance Gold Mine No. 5	[Mining, open-cut - Mining / Mineral processing] HC.MN.913	1N/28
Perseverance Gold Mine No.4	[Mining, underground mine - Mining / Mineral processing] HC.MN.924	1N/27
Pine Plots	[Arboretum, experimental farm - Forestry] HC.FT.901	4M/2
Pioneer Grave - Leyburn	[Grave, isolated, incl. explorer - Cemeteries / Burial Sites] HC.CB.906	2A/1
Rafting Ground, Kin Kin Creek	5N/3	
Railway Culvert & Remnants - Pine Rivers	SC 1N/11.1	
Railway Tunnel - Pine Rivers Shire	[Tunnel, railway - Rail Transport] HC.RL.904	1N/11
Rat-a-Tat Hut	[Camping ground- Hotels / Motels / Inns] HC.HM.902	1I/32
Ringtail School Site	[School - Education] HC.ED.901	5K/2
Scenic Lookout Glasshouse Mountains	1E/19	
Shamrock Mine Site	[Mining, underground mine - Mining / Mineral processing] HC.MN.924	6A/2
Shelter Shed Cnr Compartments 3B, D & C	1T/3.1	
Shelter Shed Compartment 6D, C	1T/3	
Springbrook NPWS Office/Workshop	1J/12	
Stockyard Creek Track, original fence post	1I/4	
Stockyard Creek Track, original gate post	[Yarding - Farming/Grazing] HC.FG.912	1I/5
Survey Tree - O'Reilly's	[Tree, blazed - Explorer / Surveyor] HC.ES.901	1I/2
Teewah Landing	[Jetty / Pier - Water Transport] HC.WT.905	5N/12.1

Teewah Track	5N/12	
Tennison Woods Memorial	[Memorial - Monument and Memorials] HC.MM.901	1N/10
The 'Meatsafe'	8B/3.1	
The Austinville Settlement	1K/2	
The Depression Gold Mine	[Mining, underground mine - Mining / Mineral processing] HC.MN.924	2A/3
Tim Merrill's Property-Tin Mine Gully	[Mining, alluvial workings - Mining / Mineral processing] HC.MN.903	8J/18
Tree Top Walk	1I/21	
Truck/Winder - Mt Glorious	[Timber machinery, eg sawblade, steam engine - Forestry] HC.FT.914	1N/17
Watalgan Fire Cabin	[Tower, fire lookout - Forestry] HC.FT.909	6H/1
Water race, west side of Clifton Creek	[Mining, alluvial workings - Mining / Mineral processing] HC.MN.903	6A/4
Western Creek Gold Diggings Site	[Mining, alluvial workings - Mining / Mineral processing] HC.MN.903	4E/7

Forest Assessment Unit, Conservation Strategy Branch, Dept of Environment 9 Oct 98

Summary List of Places and their Significance Status

PlaceName	Category	DoEFileRef
Not significant (historic/social/aesthetic)		
Bellbird Rest Stop Shelter Shed		1P/16
Example of Timber Loading Ramp, Cania Gorge		6A/7
Junction Nixon's Creek		1L/9
Kin Kin (suspension) Bridge Site	[Bridge, foot - Road Transport] HC.RD.901	5N/4
Lenthall's Dam Day Use Area	[Reservoir / Dam, water supply - Public Utilities] HC.UT.904 [Picnic ground / Recreation Reserve - Recreation and Entertainment] HC.RE.903	5A/20
Middle Kobble Camping Ground	[Camping ground- Hotels / Motels / Inns] HC.HM.902	1N/2
Middle Kobble Cattle Tracks - Top		1N/2.1
Numinbah State Forest - Skids	[Timber extraction devices and places - Forestry] HC.FT.925	1L/10
Ollie Dwyer Camp Site	[Camp, forest workers - Forestry] HC.FT.922	4V/2
Palen Creek Coal Site	[Mineral discovery site] HC.MN.910	1T/4
Purling Brook Falls Harmony Hall Re-Veg Section	[Memorial - Monument and Memorials] HC.MM.901	1J/3.3
Taromeo Sawmill	[Mill, sawmill - Forestry] HC.FT.920	8L/10.1
Telephone Line Pole - O'Reilly's		1I/9
Williams' Farm Old Dip Site	[Yarding - Farming/Grazing] HC.FG.912	4I/1.2
Williams' House Site	[Homestead complex - Farming/Grazing] HC.FG.904	4I/1.1

Forest Assessment Unit, Conservation Strategy Branch, Dept of Environment 9 Oct 98

Summary List of Places and their Significance Status

PlaceName	Category	DoEFileRef
Unassessed		
108 Fire Tower Site	[Tower, fire lookout - Forestry] HC.FT.909	1E/28
589 Lookout (Fire Tower site)	[Tower, fire lookout - Forestry] HC.FT.909	1E/19.1
Agricola Mine Site	[Mining, open-cut - Mining / Mineral processing] HC.MN.913 check	4O/1
Albert Sawmill [Pechey Sawmill]	[Mill, sawmill - Forestry] HC.FT.920	8F/8.1
Amama Picnic Area	[Picnic ground / Recreation Reserve - Recreation and Entertainment] HC.RE.903	4I/10
Amamoor Forest Station School Site	[School - Forestry] HC.FT.928	4I/8
Angus George Mackay's Grave	[Grave, isolated, incl. explorer - Cemeteries / Burial Sites] HC.CB.906	8B/16
Apiary Site, Ringtail	[Apiary - Farming/Grazing] HC.FG.903	5K/6
Apiary Sites, Cooloola	[Apiary - Farming/Grazing] HC.FG.903	5N/11
Apple Tree Creek Rotunda	5B/1	
Araucaria Barracks Site	[Camp, forest workers - Forestry] HC.FT.922	4E/9
Badtjala Aboriginal Land	5AA/38	
Baker (Young) Forest Station Site	[Office, Forestry Department] HC.FT.913 [Camp, forest workers - Forestry] HC.FT.922	5X/1
Bamboo Homestead Site	[Homestead complex - Farming/Grazing] HC.FG.904	5H/2
Bauple Forest Station Site	[Office, Forestry Department] HC.FT.913 [Camp, forest workers - Forestry] HC.FT.922	5F/2
Beerburrum Fire Tower	[Tower, fire lookout - Forestry] HC.FT.909	1E/8
Beerburrum Soldier Settlement Well	[Well / tank / trough for stock - Farming/Grazing] HC.FG.910	1E/10.1
Bellbird Feature Protection Area	[Natural Fauna species] NC.FA	4E/8
Bells Bridge Forest Station Site	[Office, Forestry Department] HC.FT.913 [Camp, forest workers - Forestry] HC.FT.922	4Q/5
Bellthorpe Cyclone Tree	1D/5	
Bellthorpe Feature Protection Area	[Natural Vegetation, Forest - non-rainforest communities] NC.VGS.02	1D/3
Bellthorpe Fire Trails	[Track, fire - Forestry] HC.FT.910	1D/11
Bellthorpe Forest Station Site	[Office, Forestry Department] HC.FT.913 [Camp, forest workers - Forestry] HC.FT.922	1D/2

Bellthorpe Road Bobtail	[Timber extraction devices and places - Forestry] HC.FT.925	4C/6
Bellthorpe-Jimna Road Saddle Watershed	[Natural Landforms] NC.L	4C/18
Benarkin Fire Tower Site	[Tower, fire lookout - Forestry] HC.FT.909	8L/13
Benarkin Forestry Office	[Office, Forestry Department] HC.FT.913	8L/2
Benarkin Nursery	8L/2.1	
Bill's Window Lookout	[Landscape, cultural - Landscape] HC.LS.901	6B/1
Billygoat Mountain Fire Cabin Site	[Tower, fire lookout - Forestry] HC.FT.909	5A/18
Black Boy Hill	[Natural Flora species] NC.FL	8L/16
Blazed Tree - Beerwah SF	[Tree, blazed - Explorer / Surveyor] HC.ES.901	1E/27
Bloodwood Cave	[Natural Cave - Landscape Feature] NC.LF.6001	6A/9.5
Boat Ramp - Coochin Creek	1E/21.1	
Bolsar Paddock	[Hut / Shack - Residential Building] HC.RB.903 [Yarding - Farming/Grazing] HC.FG.912	8L/20
Booloumba Creek Goldmine Site	[Adit - Mining / Mineral processing] HC.MN.902	4E/18
Booloumba Creek State Forest Park	[Picnic ground / Recreation Reserve - Recreation and Entertainment] HC.RE.903	4E/17
Bora Ring - Benarkin SF	[Bora ground - Ceremonial site] AC.CS.075	8L/17
Bottle and Glass Road	[Road - Road Transport] HC.RD.902	1V/4
Brett's Sawmill Site	[Mill, sawmill - Forestry] HC.FT.920	1C/18
Bridge - West Barker LA	[Bridge, road - Road Transport] HC.RD.903	8C/2
Bridge - West Gap Creek, Main Range NP	[Bridge, foot - Road Transport] HC.RD.901	1P/4
Bridge Example, Poyungan Creek	[Bridge, road - Road Transport] HC.RD.903	5AA/28
Brim's Sawmill	[Mill, sawmill - Forestry] HC.FT.920	4F/3
Brooloo Cedar Tree	[Natural Flora species] NC.FL	4E/10
Brooloo Genetic Hoop Pine Tree and Grove	4E/6	
Brooloo Relict Bunya and Hoop Pine Stands	[Natural Flora species] NC.FL	4E/5
Broowena Forest Station Site	[Office, Forestry Department] HC.FT.913 [Camp, forest workers - Forestry] HC.FT.922	5A/19
Broowena Nursery Site	5A/19.1	
Brooyar Forest Station	[Office, Forestry Department] HC.FT.913 [Camp, forest workers - Forestry] HC.FT.922	4Q/7

Bubot Creek Overseers Camp Site	[Camp, forest workers - Forestry] HC.FT.922	1B/4
Bulburin Forest Station Site	[Office, Forestry Department] HC.FT.913 [Camp, forest workers - Forestry] HC.FT.922	6C/2
Bundaroo Lodge Site	[Camp, forest workers - Forestry] HC.FT.922	4N/1
Bunya Mountains Forest Station - West Barker LA	[Camp, forest workers - Forestry] HC.FT.922 [Office, Forestry Department] HC.FT.913	8C/1
Bunyaville Jinker Track	[Road - Road Transport] HC.RD.902	1A/1
Bunyaville Nursery Dam	[Reservoir / Dam, water supply - Public Utilities] HC.UT.904	1A/4
Burleigh Heads NPWS Information Centre	1J/13	
Burnie Mill's Camp	[Camp, forest workers - Forestry] HC.FT.922	1N/20
Burton's Well - Tool Shed	8B/1.I	
Bushranger's Cave	[Natural Cave - Landscape Feature] NC.LF.6001	1I/51
Cabbage Tree Road Forestry Camp Site	[Camp, forest workers - Forestry] HC.FT.922	6C/3
Camp Milo Forestry Barracks Site	[Camp, forest workers - Forestry] HC.FT.922	5N/24
Camp Site, Tewantin SF	[Camp, forest workers - Forestry] HC.FT.922	5P/6
Cania Dam	[Reservoir / Dam, water supply - Public Utilities] HC.UT.904	6A/6
Cania Gorge Picnic Area	[Picnic ground / Recreation Reserve - Recreation and Entertainment] HC.RE.903	6A/9.1
Canoe Tree, near Tewantin	5P/5	
Cattle Yards, Elanda Point	[Yarding - Farming/Grazing] HC.FG.912	5N/1
Charcoal Pits - Cherry Creek LA	[Pit, charcoal - Forestry] HC.FT.904	8L/12
Charlie Moreland Overflow Area	[Camping ground- Hotels / Motels / Inns] HC.HM.902	4E/12.1
Cherry Venture	[Shipwreck - Water Transport] HC.WT.904	5N/14
Chinaman Gravel Loading Ramp	4J/4	
Chinese Market Garden Site	[Garden, market - Farming/Grazing] HC.FG.905	4R/1
Cinnabar Forest Station Site	[Camp, forest workers - Forestry] HC.FT.922	4S/1
Clancy's Camp	[Camping ground- Hotels / Motels / Inns] HC.HM.902	8L/15
Clarke's Garden Site	[Plantings, exotic - Parks, Gardens and Trees] HC.PG.906	6A/8
Collins Creek Camp Barracks	[Camp, forest workers - Forestry] HC.FT.922	4H/7
Collins' Hut Site	[House - Residential Building] HC.RB.902	8L/21

Como Barracks Site	[Camp, forest workers - Forestry] HC.FT.922	5M/4
Como Fire Tower Site	[Tower, fire lookout - Forestry] HC.FT.909	5M/2
Como Forest Station Site	[Office, Forestry Department] HC.FT.913	5M/3
Como Sawmill Site	[Mill, sawmill - Forestry] HC.FT.920	5M/6
Coochin Creek Camping and Day Use Area	[Camping ground- Hotels / Motels / Inns] HC.HM.902	1E/21
Cookes Knob Fire Tower	[Tower, fire lookout - Forestry] HC.FT.909	4I/9
Cooloola Creek Bridge	[Bridge, road - Road Transport] HC.RD.903	5N/19
Cooloola Way	[Road - Road Transport] HC.RD.902	5N/17
Cooloolabin Fire Tower Site	[Tower, fire lookout - Forestry] HC.FT.909	1V/1
Cooloolabin Forest Station Site	[Office, Forestry Department] HC.FT.913 [Camp, forest workers - Forestry] HC.FT.922	1V/3
Coomboo Airstrip	[Airfield / Landing strip - Air Transport] HC.AR.901	5AA/44.1
Coomboo Forestry Camp	[Camp, forest workers - Forestry] HC.FT.922	5AA/44
Cordalba Forest Station	[Office, Forestry Department] HC.FT.913 [Camp, forest workers - Forestry] HC.FT.922	5C/1.1
Cordalba Forest Station Barracks	[Office, Forestry Department] HC.FT.913 [Camp, forest workers - Forestry] HC.FT.922	5C/1.2
Cordalba Trigonometric Station	5C/3	
Crows Ash Corner and Rainforest Walk	[Natural Flora species] NC.FL	6B/3
Crows Nest NPWS Office/Workshed	8N/1	
Cunningham's Camp/ Bogimbah Mission Site	[Camp, forest workers - Forestry] HC.FT.922	5AA/36
Curtis Falls Water Wheel Sawmill	[Mill, sawmill - Forestry] HC.FT.920	1Q/1
CWA Site 'The Shack'	[Hall / lodge, scouting - Community Facilities] HC.CF.901	8B/31
Daisy Hill Road Mine Shaft	[Mining, underground mine - Mining / Mineral processing] HC.MN.924	1B/6
Danger Bridge, Kin Kin Creek	[Bridge, road - Road Transport] HC.RD.903	5L/2
Dean's Hill Fire Tower	[Tower, fire lookout - Forestry] HC.FT.909	1E/31
Deer Reserve Forest Office	[Office, Forestry Department] HC.FT.913	1AA/2
Dennis Family Burial Ground	[Cemetery - Cemeteries and Burial Sites] HC.CB.901	1B/7
Deongwar fire tower site	[Tower, fire lookout - Forestry] HC.FT.909	8G/4
Deongwar Otto Honke Goldmine and well	[Adit - Mining / Mineral processing] HC.MN.902	8G/2

Doyles Hut	[Hut / Shack - Residential Building] HC.RB.903 [Yarding - Farming/Grazing] HC.FG.912	6F/5
Dragon Cave	[Natural Cave - Landscape Feature] NC.LF.6001	6A/9.4
Dripping Rock	[Natural Landforms] NC.L	6A/9.2
Dry Stone Wall	4E/21	
Duckinwilla School Reserve	[School - Education] HC.ED.901	5A/6
Duncan Park	[Picnic ground / Recreation Reserve - Recreation and Entertainment] HC.RE.903	8M/4
Dundabara NPWS Office	5AA/39	
Durikai Railway Station	[Railway, not tramway - Rail Transport] HC.RL.901	2B/6
Eagles Nest Lookout	4Q/3	
East Nanango Fire Tower Site	[Tower, fire lookout - Forestry] HC.FT.909	8M/3
East Nanango Forestry Station and Nursery	[Office, Forestry Department] HC.FT.913 [Camp, forest workers - Forestry] HC.FT.922	8M/5
Elgin Vale Forest Station Site	[Office, Forestry Department] HC.FT.913 [Camp, forest workers - Forestry] HC.FT.922	4T/1
Elliott River Fire Tower	[Tower, fire lookout - Forestry] HC.FT.909	5B/2
Elliott River Forestry Station	[Office, Forestry Department] HC.FT.913 [Camp, forest workers - Forestry] HC.FT.922	5B/3
Emery Bridge Road Old Farm Site	[Homestead complex - Farming/Grazing] HC.FG.904	5G/1
Emu Creek Gold Mines	[Mining, underground mine - Mining / Mineral processing] HC.MN.924	8L/1
Emu Forest Park	[Camping ground- Hotels / Motels / Inns] HC.HM.902	8L/14
Enoggera Fire Tower	[Tower, fire lookout - Forestry] HC.FT.909	1N/21
Enoggera Forestry Barracks	[Camp, forest workers - Forestry] HC.FT.922	1N/14
Enoggera Reservoir Complex	[Reservoir / Dam, water supply - Public Utilities] HC.UT.904	1N/12
Eurong NPWS Office	[Office, Forestry Department] HC.FT.913 [Camp, forest workers - Forestry] HC.FT.922	5AA/20
Eurong Resort and Township	5AA/19	
Log loading ramp, Cameron Scrub	[Timber extraction devices and places - Forestry] HC.FT.925	5N/23
Experimental Plots/Former Banana plots	5N/18	
Fassifern Lookout	[Natural montane / alpine area] NC.AL	1P/3

Fernbourne Precinct	[Mill, sawmill - Forestry] HC.FT.920	1U/1
Fig Tree Walk	4E/20	
Figtree Forestry Camp site	[Camp, forest workers - Forestry] HC.FT.922	5AA/3
Fire Tower Site, Mt Cooroora	[Tower, fire lookout - Forestry] HC.FT.909	5J/1
Forest Park Rifle Range	1B/2	
Forest Park Spotted Gum Experimental Plot	[Arboretum, experimental farm - Forestry] HC.FT.901	1B/1
Forest Station Site, Mothar Mountain	[Office, Forestry Department] HC.FT.913 [Camp, forest workers - Forestry] HC.FT.922	5Q/3
Forestry Barracks Site, Gardners Road	[Camp, forest workers - Forestry] HC.FT.922	5V/1
Forestry Barracks Site, Mothar Mountain	[Camp, forest workers - Forestry] HC.FT.922	5Q/2
Forestry Station Pechey	[Camp, forest workers - Forestry] HC.FT.922 [Office, Forestry Department] HC.FT.913	8F/2
Former Schacts Creek Forest Station	[Office, Forestry Department] HC.FT.913 [Camp, forest workers - Forestry] HC.FT.922	4J/1
Fraser Island Eastern Beach	[Natural Landforms] NC.L	5AA/43
Fraser Island Lakes Precinct	[Natural Landforms] NC.L	5AA/42
Freshwater Road	5N/15	
Funnels Hut Site	[Hut / Shack - Residential Building] HC.RB.903	4L/1.2
Gallangowan Married Quarters	[Settlement, Forest Dept - Forestry] HC.FT.912	4F/5
Gallangowan Nursery Shed	4F/1	
Galley	[Camp, forest workers - Forestry] HC.FT.922	4M/1
Galley (near Locks Pinch)	[Camp, forest workers - Forestry] HC.FT.922	5M/5
Garry's Camp Site/Garry's Anchorage	5AA/4	
Geham Soldier Settlement	8E/1	
George Ross (First House on Bunyas)	[House - Residential Building] HC.RB.902	8B/17
Glasshouse Mountains Forest Drive	1E/24	
Glastonbury Creek State Forest Park	[Camping ground- Hotels / Motels / Inns] HC.HM.902	4Q/1
Gold mining site	[Shaft - Mining / Mineral processing] HC.MN.909	6I/1
Googa Creek State School site	[School - Education] HC.ED.901	8K/5
Googa Fire Tower site	[Tower, fire lookout - Forestry] HC.FT.909	8K/3
Googa Forestry HQ - original site	[Office, Forestry Department] HC.FT.913	8K/4

Googa Googa Creek Pine Sawmill	[Mill, sawmill - Forestry] HC.FT.920	8K/7
Goomburra SF Camping Area	[Camping ground- Hotels / Motels / Inns] HC.HM.902	1O/1
Goomburra SF Experimental Plot	[Arboretum, experimental farm - Forestry] HC.FT.901	1O/3
Granite Headstone Quarry Lease	[Quarry - Mining / Mineral processing] HC.MN.916	8L/5
Granny Smith's Tearoom	8F/8.2	
Graphite Mine Site (not visited)	5AC/1	
Grave stones, Ringtail	[Grave, isolated, incl. explorer - Cemeteries / Burial Sites] HC.CB.906	5K/5
Grazing Hut, Kullogum	[Homestead complex - Farming/Grazing] HC.FG.904	5A/16
Grazing Lease - Davis	[Yarding - Farming/Grazing] HC.FG.912	8L/3
Grazing Lease/Former Forestry Camp Site	[Camp, forest workers - Forestry] HC.FT.922	6E/6
Grenville Walker's Hut	[Hut / Shack - Residential Building] HC.RB.903	4H/1
Grigor's Sawmill	[Mill, sawmill - Forestry] HC.FT.920	1E/39.1
Gus Beutel's Lookout	8J/2	
Happy Valley Resort and Township	5AA/34	
High Hill Fire Tower	[Tower, fire lookout - Forestry] HC.FT.909	5T/1
Hill 60 Firetower	[Tower, fire lookout - Forestry] HC.FT.909	8L/7.1
Honey Extraction Site	[Apiary - Farming/Grazing] HC.FG.903	4E/11
Hook Point Lightkeeper's Residence Site	[House - Residential Building] HC.RB.902	5AA/1
Hoop Pine and Re-veg Plot - Numinbah SF	[Camp, forest workers - Forestry] HC.FT.922	1L/1.1
House Site	[House - Residential Building] HC.RB.902	4Q/2
House Site	[House - Residential Building] HC.RB.902	4P/1
House site and yards, Brooweena	5A/9	
Hut and windmill (not visited)	[Hut / Shack - Residential Building] HC.RB.903	6F/9
Hut and yards	[Hut / Shack - Residential Building] HC.RB.903 [Yarding - Farming/Grazing] HC.FG.912	6F/8
Hut and yards	[Hut / Shack - Residential Building] HC.RB.903 [Yarding - Farming/Grazing] HC.FG.912	6F/7
Hut and yards	[Hut / Shack - Residential Building] HC.RB.903 [Yarding - Farming/Grazing] HC.FG.912	6F/4
Hut and yards	[Hut / Shack - Residential Building] HC.RB.903 [Yarding - Farming/Grazing] HC.FG.912	6F/3

Hut, yards and dip	[Hut / Shack - Residential Building] HC.RB.903 [Yarding - Farming/Grazing] HC.FG.912	6F/2
Imbil Forest Drive Scenic Lookout No. 4	4E/4	
James Doyle House Site	[Homestead complex - Farming/Grazing] HC.FG.904 [Yarding 4V/1 - Farming/Grazing] HC.FG.912	
Jim Goad's Road Gang Camp	[Camp, forest workers - Forestry] HC.FT.922	1M/1
Jowarra Feature Protection Area 20	[Hut / Shack - Residential Building] HC.RB.903	1E/25
Jowarra Park	[Picnic ground / Recreation Reserve - Recreation and Entertainment] HC.RE.903	1E/26
Kabunga Nursery Site	[Camp, forest workers - Forestry] HC.FT.922	4H/5
Kadanga Barracks Site	[Camp, forest workers - Forestry] HC.FT.922	4G/2
Kadanga Bobtail	[Timber extraction devices and places - Forestry] HC.FT.925	4G/1
Kadanga Winch Truck	[Timber extraction devices and places - Forestry] HC.FT.925	4G/3
Kalpowar Queen	6B/6	
Kalpowar Recreation Area	[Camp, forest workers - Forestry] HC.FT.922 [Camping ground- Hotels / Motels / Inns] HC.HM.902	6B/5
Kauri Creek Old Log Dump	5D/4	
Kelly Fire Tower	[Tower, fire lookout - Forestry] HC.FT.909	5M/7
Kenilworth Forest Drive 'E' Lookout	4E/14	
Kingfisher Bay Resort	5AA/22	
Kinkuna Plane Crash Site	[Disaster site - eg explorer, mining] HC.ES.903	6J/1
Kippa Ring - Benarkin SF	[Bora ground - Ceremonial site] AC.CS.075	8L/17.1
Kluver's Lookout	[Memorial - Monument and Memorials] HC.MM.901	1M/2
Kullogum Forest Station Site	[Office, Forestry Department] HC.FT.913 [Camp, forest workers - Forestry] HC.FT.922	5A/12
Kullogum Tower No. 1 Site	[Tower, fire lookout - Forestry] HC.FT.909	5A/13
Kybong School Site	[School - Education] HC.ED.901	5S/1
Larson's Road Railway Overbridge	[Bridge, railway - Rail Transport] HC.RL.902	5C/8
Leahy Fire Tower, Gallangowan	[Tower, fire lookout - Forestry] HC.FT.909	4F/2
Leatheren Tower Site	[Tower, fire lookout - Forestry] HC.FT.909	4I/7

Leslie and Vera Doran's Graves	[Grave, isolated, incl. explorer - Cemeteries / Burial Sites] HC.CB.906	5Z/1
Lincoln (Bootawa) Sugar Mill Site	1C/10	
Little Pocket Bald	[Natural Landforms] NC.L	8B/22
Log Landing, Noosa River	5N/10	
Loveday's Road Bull Paddock Site	1C/11	
Main Range NPWS Office/Workshop	1P/19	
Manumbar Scrub	[Natural Vegetation, Forest - non-rainforest communities] NC.VGS.02	4H/2
Mapleton Forest Station Site / Picnic Area	[Office, Forestry Department] HC.FT.913 [Camp, forest workers - Forestry] HC.FT.922 [Picnic ground / Recreation Reserve - Recreation and Entertainment] HC.RE.903	1V/5
Marble Top Fire Tower	[Tower, fire lookout - Forestry] HC.FT.909	8M/1
Marked Picabeen Palms, Cunningham's Gap	1P/2	
Marked Tree - Piper Comanche Wreck	[Disaster site - eg explorer, mining] HC.ES.903	1N/9.1
Married Quarters, Doongul	[Camp, forest workers - Forestry] HC.FT.922	5A/14
Maryborough / Cooloola Road Experimental Plot	[Arboretum, experimental farm - Forestry] HC.FT.901	5D/1
Marys Creek Forestry Barracks Site	[Camp, forest workers - Forestry] HC.FT.922	4J/3
Marys Creek House Site	[Camp, forest workers - Forestry] HC.FT.922	4J/2
Matthew Flinders Rest Area	[Memorial - Monument and Memorials] HC.MM.901	1E/33
Mawhinney's Fig Tree	1E/36	
McKenzie Sawmill Site	[Mill, sawmill - Forestry] HC.FT.920	8B/8
Mill Park - Site of Pettigrew Mill	[Mill, sawmill - Forestry] HC.FT.920	1E/34
Million Fire Tower Site	[Tower, fire lookout - Forestry] HC.FT.909	4I/3
Mine Shaft, Corella	[Shaft - Mining / Mineral processing] HC.MN.909	5W/1
Moggill Apiary Site 4	[Apiary - Farming/Grazing] HC.FG.903	1H/11
Moggill Dry Rainforest Gully	[Natural Vegetation, Forest - rainforest communities] NC.VGS.01	1H/10
Moggill Forest Clearing	[Natural Vegetation, Forest - rainforest communities] NC.VGS.01	1H/12
Moggill Forestry (?) Camp Site	[Camp, forest workers - Forestry] HC.FT.922	1H/13
Moggill Forestry Camp Site	[Camp, forest workers - Forestry] HC.FT.922	1H/8

Moggill Old Mill Road Dry Sclerophyll Forest	[Natural Vegetation, Forest - non-rainforest communities] NC.VGS.02	1H/3
Moggill Ridge Lookout Point	[Natural Landforms] NC.L	1H/9
Moggill Scenic Lookout	[Natural Vegetation, Forest - non-rainforest communities] NC.VGS.02	1H/2
Moggill SF Circle of Rocks	1H/6	
Moggill SF Stone Cairns	1H/7	
Monal Goldfield	6N/1	
Monsildale Sawmill and Township	[Mill, sawmill - Forestry] HC.FT.920 [Settlement, sawmill - Forestry] HC.FT.915	4C/4
Morgansville Recreation Area	[Picnic ground / Recreation Reserve - Recreation and Entertainment] HC.RE.903	5D/6
Mortimer Fire Tower Site No 2	[Tower, fire lookout - Forestry] HC.FT.909	4F/4
Mosquito Creek Possible Rafting Ground	5D/5	
Mt Allan Fire Tower	[Tower, fire lookout - Forestry] HC.FT.909	4E/15
Mt Beerburum Day Use Area	[Picnic ground / Recreation Reserve - Recreation and Entertainment] HC.RE.903	1E/29
Mt Benarige Fire Tower Site	[Tower, fire lookout - Forestry] HC.FT.909	5H/3
Mt Binga Sawmill site	[Mill, sawmill - Forestry] HC.FT.920	8K/2
Mt Borumba Fire Tower No. 8	[Tower, fire lookout - Forestry] HC.FT.909	4E/16
Mt Coora Copper Mine and Smelter	4R/5	
Mt Cooroora Hiking Trail	5J/7	
Mt Cordeaux Lookout	[Natural montane / alpine area] NC.AL	1P/9
Mt Doongul Fire Tower Site	[Tower, fire lookout - Forestry] HC.FT.909	5A/17
Mt Elliot Fire Tower	[Tower, fire lookout - Forestry] HC.FT.909	5M/8
Mt Fort William Fire Tower	[Tower, fire lookout - Forestry] HC.FT.909	6B/4
Mt Glorious Barracks	[Camp, forest workers - Forestry] HC.FT.922	1N/1
Mt Hector Mine Site	6P/1	
Mt Jacob Mine Site	6O/1	
Mt Kandanga Fire Tower	[Tower, fire lookout - Forestry] HC.FT.909	4X/1
Mt Luke Station	[Railway, not tramway - Rail Transport] HC.RL.901	8E/2.1
Mt Mary Smokes Lookout	1D/4	

Mt Mee Army Helicopter Landing Site	1C/14	
Mt Mee Bark Removal Tree	1C/2	
Mt Mee Logger's Hut Site	[Camp, forest workers - Forestry] HC.FT.922	1C/13
Mt Mee Meteorite Impact Site	1C/3	
Mt Mee Road Isolated Grave	[Grave, isolated, incl. explorer - Cemeteries / Burial Sites] HC.CB.906	1C/8
Mt Nebo Road Complex	1N/30	
Mt Pleasant Banana Settlement	1C/16	
Mt Pleasant Sawmill	[Mill, sawmill - Forestry] HC.FT.920	1C/17
Mt Stanley Forest Station and Nursery	[Office, Forestry Department] HC.FT.913 [Camp, forest workers - Forestry] HC.FT.922	8M/6
Mt Wolvi Fire Tower & Lookout	[Tower, fire lookout - Forestry] HC.FT.909	5L/3
Muddy Fire Tower Site	[Tower, fire lookout - Forestry] HC.FT.909	8L/22
Munro Fence Remains	[Homestead building - Residential Building] HC.RB.904	8G/5
Myravale Barracks Site	[Camp, forest workers - Forestry] HC.FT.922	4K/1
Myravale Houses	[House - Residential Building] HC.RB.902 [Camp, forest workers - Forestry] HC.FT.922	4K/2
Nerang Rifle Range	1Y/1	
Newbound Collingwood Sawmill/ House Site	[Mill, sawmill - Forestry] HC.FT.920	8B/10
No. 1 Forestry Camp	[Camp, forest workers - Forestry] HC.FT.922	1E/14
Noosa Bridge	[Bridge, road - Road Transport] HC.RD.903	5N/13
North Aramara Forest Station Site	[Office, Forestry Department] HC.FT.913 [Camp, forest workers - Forestry] HC.FT.922	5A/10
Norton Goldfield	6G/1	
NPWS Workshop Site/Toilets	8B/29	
Numinbah State Forest Park- Rural Rec Area	[Picnic ground / Recreation Reserve - Recreation and Entertainment] HC.RE.903	1L/5
Numinbah Valley Border Gate	[Road - Road Transport] HC.RD.902	1I/52
Numinbah Valley School of Arts	[Hall / lodge, scouting - Community Facilities] HC.CF.901	1L/6
O'Reilly Cream Stand	1I/20	
Oakview Forestry Camp Site	[Office, Forestry Department] HC.FT.913 [Camp, forest	4R/3

	workers - Forestry] HC.FT.922	
Old Barracks Site - Main Range NP	[Camp, forest workers - Forestry] HC.FT.922 [Office, Forestry Department] HC.FT.913	1P/1
Old Beerburum Nursery Site	1E/20	
Old Bullock Crossing - Mellum Creek	1E/9.1	
Old Coach Road Well and Trough	[Well / tank / trough for stock - Farming/Grazing] HC.FG.910	8L/8
Old Crows Nest Railway Line	[Railway, not tramway - Rail Transport] HC.RL.901	8E/2
Old Farm Site, south of Harry's Hut	[Fence, farm - Farming/Grazing] HC.FG.913	5N/8
Old Forestry Barracks - Goomburra SF	[Camp, forest workers - Forestry] HC.FT.922	1O/4
Old Main Road Bridges - Numinbah	[Bridge, road - Road Transport] HC.RD.903	1L/3
Old Mill Road Access Trail Eucaplypt Forest	[Natural Vegetation, Forest - non-rainforest communities] NC.VGS.02	1H/4
Old Mill Road Apiary Site 5	[Apiary - Farming/Grazing] HC.FG.903	1H/1
Old Mill Road Logging Access Track	[Track, timber - Forestry] HC.FT.932	1H/5
Old Misery Sawmill Site	[Mill, sawmill - Forestry] HC.FT.920	8G/3
Old No. 3 Fire Tower Site, Woondum	[Tower, fire lookout - Forestry] HC.FT.909	5R/1
Old Nursery - Pechey SF	8F/2.1	
Old Sawmill Site - Googa	[Mill, sawmill - Forestry] HC.FT.920	8K/8
Old Walking Track to McGory Falls	8B/27	
Old Yards, Million Logging Area	[Yarding - Farming/Grazing] HC.FG.912	4I/4
Ollenbergs Hut	[Hut / Shack - Residential Building] HC.RB.903	4T/2
Otto Honke's Miner's Hut	[Hut / Shack - Residential Building] HC.RB.903	8G/2.1
Overseer's Residence - No. 1 Forestry Camp	[Camp, forest workers - Forestry] HC.FT.922	1E/14.1
Palm Grove Walking Track/ Wooroi Day Use Area	5P/4	
Palmgrove NP - Curtis Road Entrance Pillars	1Q/12	
Paradise Falls Picnic Area	[Picnic ground / Recreation Reserve - Recreation and Entertainment] HC.RE.903	8B/24
Peach Trees Camping Area	[Camping ground- Hotels / Motels / Inns] HC.HM.902	4C/19
Peach Trees Sawmill	[Mill, sawmill - Forestry] HC.FT.920	1E/39
Pechey Fire Tower	[Tower, fire lookout - Forestry] HC.FT.909	8F/5

Pechey Forest Aboretum	[Arboretum, experimental farm - Forestry] HC.FT.901	8F/7
Pechey Railway Remains - Gate/Culvert	[Railway, not tramway - Rail Transport] HC.RL.901	8F/1
Peters Creek Forest Walk	[Picnic ground / Recreation Reserve - Recreation and Entertainment] HC.RE.903	4L/1.1
Pettigrew's William Street Sawmill	[Mill, sawmill - Forestry] HC.FT.920	1U/2
Phil Thompson's Property	[Homestead complex - Farming/Grazing] HC.FG.904	1L/8
Pine Creek Forestry Camp	[Camp, forest workers - Forestry] HC.FT.922	1L/1
Pine Mountain Sawmill	[Mill, sawmill - Forestry] HC.FT.920	1L/7.1
Pipeclay Bora Ring	5U/1	
Pocket Road Bridge	[Bridge, road - Road Transport] HC.RD.903	1L/4
Point Pure Lookout	4Q/4	
Police Paddock Conservation Park	5AB/1	
Pomona Forestry Depot	[Office, Forestry Department] HC.FT.913	5J/3
Poona Lake	[Landscape, cultural - Landscape] HC.LS.901	5N/16
Possible Horse-drawn Tramway	[Tramway, timber - Forestry] HC.FT.930	5AA/12
Postan's Outlying Camp	[Camp, forest workers - Forestry] HC.FT.922	5AA/26.1
Poverty Point Bora Ring	[Bora ground - Ceremonial site] AC.CS.075	5N/21
Poyungan Forestry Camp	[Camp, forest workers - Forestry] HC.FT.922	5AA/27
Purling Brook Stone and Timber sign	1J/3.4	
Quarry, Mt Cooroora	[Quarry - Mining / Mineral processing] HC.MN.916	5J/5
Rabbit Fencing - Numinbah	1I/53	
Raddatz House	[House - Residential Building] HC.RB.902	1E/35
Red Roofed House Site	[House - Residential Building] HC.RB.902	4J/6
Reeans Road Railway Formation & Plantings	[Railway, not tramway - Rail Transport] HC.RL.901	1E/5
Reeans Road Railway Overbridge	[Railway, not tramway - Rail Transport] HC.RL.901	1E/6
Ricky's Hut	[Hut / Shack - Residential Building] HC.RB.903	8L/18
Rifle Range - Beerburum	1E/16	
Rifle Range Site, Mt Cooroora	5J/6	
Ringtail Barracks Site	[Camp, forest workers - Forestry] HC.FT.922	5K/4

Ringtail Hall Site	[Hall / lodge, scouting - Community Facilities] HC.CF.901	5K/3
Road Camp Site & Vehicle Servicing Ramp	[Camp, forest workers - Forestry] HC.FT.922	4K/3
Rock Cairn top of western peak of Mt D'Aguilar	[Cairn - Surveyor] HC.ES.902	1N/7
Rogers Park Walk	8D/2	
Rose Creek Fire Tower Site	[Tower, fire lookout - Forestry] HC.FT.909	1E/11
Rotary Direction Plate - Tamborine NP	1Q/2	
Russell Park	[Natural Vegetation, Forest - rainforest communities] NC.VGS.01	8B/19
Salmon House Site, Fig Tree Point	[House - Residential Building] HC.RB.902	5N/6
Sand Mine - Blackbutt	[Mining, open-cut - Mining / Mineral processing] HC.MN.913	8L/9
Sandy Creek Pioneer Army Bridge	[Bridge, road - Road Transport] HC.RD.903	5C/5
Sandy Creek Stone Bridge	[Bridge, road - Road Transport] HC.RD.903	5C/7
Sandy Fire Tower	[Tower, fire lookout - Forestry] HC.FT.909	8L/6
Sapphires in Googa Creek	[Mining, alluvial workings - Mining / Mineral processing] HC.MN.903	8K4.1
Sawmill site - West Barker LA	[Mill, sawmill - Forestry] HC.FT.920	8C/3
Sawmill??	[Mill, sawmill - Forestry] HC.FT.920	1E/37
Scientific Huts	[Hut / Shack - Residential Building] HC.RB.903	4N/2
Scrubby Creek Tramline	[Tramway, timber - Forestry] HC.FT.930	1D/10
Scrubby Creek Tramway	[Tramway, timber - Forestry] HC.FT.930	1D/8
Shelter Shed - East Nanango	8M/2	
Shelter Shed Example	6B/2	
Silver City Cutters Camp Site	[Camp, forest workers - Forestry] HC.FT.922	5AA/33
Site of old school - Stirling's property	[School - Education] HC.ED.901	8B/20
Site of R60 Firetower	[Tower, fire lookout - Forestry] HC.FT.909	1E/18
Slab Hut	[Hut / Shack - Residential Building] HC.RB.903	4R/4
Soldier Settlement Farm Plantings	[Plantings, exotic - Parks, Gardens and Trees] HC.PG.906	1E/3
Soldier Settlement House	1E/10	
Spider Bridge, Poverty Point	[Bridge, road - Road Transport] HC.RD.903	5N/20
Spike's Hut	[Hut / Shack - Residential Building] HC.RB.903	4E/13

Squatters Hut and Market Garden - Austinville SF	[Garden, market - Farming/Grazing] HC.FG.905	1K/3
Stingy McPhee's Camp	[Hut / Shack - Residential Building] HC.RB.903	8B/2.1
Stirlings Crossing Forestry Camp Site	[Settlement, Forest Dept - Forestry] HC.FT.912	4E/2
Stone pitching around culverts	[Culvert, storm water - Road Transport] HC.RD.913	5Q/1
Stony Creek Forestry Camp	[Camp, forest workers - Forestry] HC.FT.922	1D/9
Stony Creek Picnic Area	[Picnic ground / Recreation Reserve - Recreation and Entertainment] HC.RE.903	1D/6
Sunday Creek Fire Tower	[Tower, fire lookout - Forestry] HC.FT.909	4C/12
Sunken wreck, Lake Como	5N/7	
Survey Tree - Pine Creek Forestry Camp	[Tree, blazed - Explorer / Surveyor] HC.ES.901	1L/2
Survey/Date Tree (Scenic Circuit)	[Tree, blazed - Explorer / Surveyor] HC.ES.901	8B/28
Tamborine Mountain Heritage Centre	1Q/14	
Tarameo Creek Gold Mines	[Mining, underground mine - Mining / Mineral processing] HC.MN.924	8L/4
Taromeo Seed Orchard	[Arboretum, experimental farm - Forestry] HC.FT.901	8L/10
Taromeo Stone House and Coach Road	[House - Residential Building] HC.RB.902 [Road - Road Transport] HC.RD.902	8O/1
Tarong Fire Tower Site	[Tower, fire lookout - Forestry] HC.FT.909	8D/6
Tarong Lookout	8D/5	
Terracer	4J/5	
Tewantin Forest Station Site	[Office, Forestry Department] HC.FT.913 [Camp, forest workers - Forestry] HC.FT.922	5P/3
The Bottle Tree - Round Scrub	8L/19	
The Hermit of Lamington's Cave	1I/33	
The Lincoln Wreck	[Disaster site - eg explorer, mining] HC.ES.903	1P/20
The Old School	[School - Education] HC.ED.901	8B/20.1
The Overhang	[Natural Landforms] NC.L	6A/9.3
The Pinnacles	[Natural Landforms] NC.L	5AA/37
The Piper Comanche Wreck	[Disaster site - eg explorer, mining] HC.ES.903	1N/9
The Quarry - Bunya Mountains	[Quarry - Mining / Mineral processing] HC.MN.916	8B/4
The Ranch	[Hut / Shack - Residential Building] HC.RB.903 [Yarding -	6F/6

	Farming/Grazing] HC.FG.912	
The Summit Gravel Quarry	[Quarry - Mining / Mineral processing] HC.MN.916	1N/16
Thinoomba Forest Station Site	[Office, Forestry Department] HC.FT.913 [Camp, forest workers - Forestry] HC.FT.922	5Y/1
Three Hundred Creek Barracks Site	[Camp, forest workers - Forestry] HC.FT.922	4I/5.2
Three Hundred Creek Office Site	[Office, Forestry Department] HC.FT.913 [Camp, forest workers - Forestry] HC.FT.922	4I/5.1
Tiger Pub	[Canal / aqueduct, water supply - Public Utilities] HC.UT.901	1E/15
Timber Bridge, Ringtail Creek Road	[Bridge, road - Road Transport] HC.RD.903	5K/1
Timber Footbridge, Kin Kin Creek	[Bridge, foot - Road Transport] HC.RD.901	5N/5
Timber Jinker - Mt Matheson Trail	[Timber machinery, eg sawblade, steam engine - Forestry] HC.FT.914	1P/5
Tinbeerwah Hall and Rest Area		5P/2
Tinbeerwah Lookout and Picnic Area	[Landscape, cultural - Landscape] HC.LS.901 [Picnic ground / Recreation Reserve - Recreation and Entertainment] HC.RE.903	5P/1
Toe Hold Tree		4E/22
Toolara Forest Station	[Office, Forestry Department] HC.FT.913 [Camp, forest workers - Forestry] HC.FT.922	5M/10
Toolara Nursery		5M/10.1
Track Construction & Temp Forestry Camp - Mt Glorious	[Camp, forest workers - Forestry] HC.FT.922	1N/15
Traves Road Winching Site	[Timber machinery, eg sawblade, steam engine - Forestry] HC.FT.914	4C/17
Trig Station- O'Reilly's		1I/1
Tuan Big Angle Fire Tower	[Tower, fire lookout - Forestry] HC.FT.909	5E/1
Tuan Forest Station	[Office, Forestry Department] HC.FT.913 [Camp, forest workers - Forestry] HC.FT.922	5D/2
Tuan West Fire Tower (No.6)	[Tower, fire lookout - Forestry] HC.FT.909	5D/3
View west from Blackman Gap Road		6C/4
View west of SF 391	[Landscape, cultural - Landscape] HC.LS.901	6C/1
Wanggoolba Airstrip	[Airfield / Landing strip - Air Transport] HC.AR.901	5AA/13
Warrah Old Coach Road & Corduroy Crossing	[Road - Road Transport] HC.RD.902	5A/1

Water Reservoir, Mt Cooroora	[Reservoir / Dam, water supply - Public Utilities] HC.UT.904	5J/4
Wattle Pocket Camp Site	[Camp, forest workers - Forestry] HC.FT.922	5Q/4
Westcott Camp Ground - Grazing Site	[Homestead complex - Farming/Grazing] HC.FG.904	8B/25
Widgee Forestry Camp Site	[Camp, forest workers - Forestry] HC.FT.922	4K/4
Wild Horse Mountain Lookout	[Tower, fire lookout - Forestry] HC.FT.909	1E/40
Wilkinson's Pine Saw Mill	[Mill, sawmill - Forestry] HC.FT.920	8L/11
Wilson's Camp	[Camp, forest workers - Forestry] HC.FT.922	5AA/21
Wilston and Burbank(?) Coal Mines	[Mining, underground mine - Mining / Mineral processing] HC.MN.924	5A/2
Wolvi Forest Station Site	[Office, Forestry Department] HC.FT.913 [Camp, forest workers - Forestry] HC.FT.922	5T/2
Wongi Fire Tower No. 10	[Tower, fire lookout - Forestry] HC.FT.909	5A/11
Wongi Forestry Barracks	[Camp, forest workers - Forestry] HC.FT.922	5A/3
Wongi Jinkers / Bullock Wagons	[Timber extraction devices and places - Forestry] HC.FT.925	5A/4
Woocoo Creek Gold Mine	[Mining, underground mine - Mining / Mineral processing] HC.MN.924	5C/2
Woodford Fire Tower Site	[Tower, fire lookout - Forestry] HC.FT.909	1E/7
Woodford Forest Station Site	[Camp, forest workers - Forestry] HC.FT.922 [Office, forestry department] HC.FT.913	1E/4
Woodlands Fire Tower Site	[Tower, fire lookout - Forestry] HC.FT.909	4I/2
Woondum Forest Station Site	[Office, Forestry Department] HC.FT.913 [Camp, forest workers - Forestry] HC.FT.922	5R/2
Wrattens Camp Site	[Settlement, Forest Dept - Forestry] HC.FT.912	4H/6
Wrattens Forest Surveyor's Tree	[Tree, blazed - Explorer / Surveyor] HC.ES.901	4H/3
Wrattens Timber Getter's Hut Site	[Camp, forest workers - Forestry] HC.FT.922	4H/8
Wright's Waterhole	[Reservoir / Dam, water supply - Public Utilities] HC.UT.904	1B/3
Yabba Station Tractor Engine	[Timber extraction devices and places - Forestry] HC.FT.925	4C/3
Yankee Jack Forestry Camp Site	[Camp, forest workers - Forestry] HC.FT.922	5AA/6
Yards and dip	[Yarding - Farming/Grazing] HC.FG.912	6F/1
Yarraman Nursery Site	8D/7	

Yarraman Sawmill	[Mill, sawmill - Forestry] HC.FT.920	8D/1
Yednia Lookout	4C/7	
Yednia Sawmill and Township	[Mill, sawmill - Forestry] HC.FT.920 [Settlement, sawmill - Forestry] HC.FT.915	4C/1
Yellow Waterhole Forestry Camp Site	[Camp, forest workers - Forestry] HC.FT.922	5A/15
Yuan's Sawmill	[Mill, sawmill - Forestry] HC.FT.920	1L/7
Yurol Barracks/Nursery Site	[Camp, forest workers - Forestry] HC.FT.922	5O/2
Yurol Forest Station Site	[Office, Forestry Department] HC.FT.913	5O/1
Forest Assessment Unit, Conservation Strategy Branch, Dept of Environment		9 Oct 98

SUMMARY OF PLACES PROPOSED AS SIGNIFICANT, ABOVE NATIONAL ESTATE THRESHOLD
Historic, Social and Aesthetic Values Projects

DoE File Ref.	Place	Group (Refer following table for no's within each group)	Tenure				Criteria above threshold		
			National Park / Conservat ion Park	State Forest / Timber Reserve	Private	Other eg. Road Reserve, Quarry, Loc Gov't Reserve	Historic (A3,A4,B2 ,C2, D2,F1, H1)	Social (G1)	Aestheti c (E1)
12/1	National Bi-centennial Heritage Trail	Recreation & Entertainment [HC.RE]		✓	✓	✓		✓	
1A/2	Bunyaville Military Bunker	Military [HC.ML]		✓			✓		
1AA/1	KCB Tree	Exploration, Survey and Places of Historical Events [HC.ES]		✓			✓		
1B/5	Daisy Hill Charcoal Pit	Forestry and Timber Industry [HC.FT]		✓			✓		
1C/4	Mt Mee Tramway Site	Forestry and Timber Industry [HC.FT]		✓			✓		
1C/7	Mt Mee Bullock Trail	Forestry and Timber Industry [HC.FT]		✓			✓		
1C/19	Diana's Bath	Landscape [HC.LS]			✓			✓	
1C/20	Avenue of Honour - Mt Mee	Military [HC.ML]				✓	✓		
1C/21.1	Former Mt Mee Married Quarters	Forestry and Timber Industry [HC.FT]		✓			✓		
1C/22	Mt Mee Banana Settlement Complex	Farming and Grazing [HC.FG]		✓	✓		✓		
1C/23	Mt Archer Complex	Forestry and Timber Industry [HC.FT]		✓	✓		✓		
1D/1	Brandon's Sawmill Site, Bellthorpe	Forestry and Timber Industry [HC.FT]			✓		✓		

DoE File Ref.	Place	Group (Refer following table for no's within each group)	Tenure				Criteria above threshold		
			National Park / Conservat ion Park	State Forest / Timber Reserve	Private	Other eg. Road Reserve, Quarry, Loc Gov't Reserve	Historic (A3,A4,B2 ,C2, D2,F1, H1)	Social (G1)	Aestheti c (E1)
1E/12	Salvage Log Dump	Forestry and Timber Industry [HC.FT]		✓			✓		
1E/22	Beerburum Scientific Area 1	Scientific Facilities [HC.SF]		✓			✓		
1E/38	Bankfoot House	Residential Buildings [HC.RB]			✓		✓		
1E/51	Beerwah/Beerburum Complex	Forestry and Timber Industry [HC.FT]		✓			✓		
1E/52	Beerburum Soldier Settlement Complex	Farming and Grazing [HC.FG]		✓	✓		✓		
1E/53	Campbellville Sawmill Complex	Forestry and Timber Industry [HC.FT]		✓			✓	✓	
1F/3	Crohamhurst Complex	Scientific Facilities [HC.SF]		✓	✓		✓		
1G/1	Glasshouse Mountains Cultural Landscape	Landscape [HC.LS]	✓					✓	✓
1I/27	Antarctic Beech Forest - Green Mountains	Landscape [HC.LS]	✓				✓		
1I/34	Robert's Survey Tree 'Coolya'	Exploration, Survey and Places of Historical Events [HC.ES]	✓				✓		
1I/54	O'Reilly Cultural Landscape	Hotels /Motels /Inns [HC.HM]	✓		✓		✓		
1I/54.2	Lahey's and Enright's Sawmill	Forestry and Timber Industry [HC.FT]			✓		✓		
1I/55	Stinson Complex	Air Transport [HC.AR]	✓		✓		✓		
1I/56	Binna Burra Cultural Landscape	Hotels /Motels /Inns [HC.HM]			✓		✓		✓

DoE File Ref.	Place	Group (Refer following table for no's within each group)	Tenure				Criteria above threshold		
			National Park / Conservat ion Park	State Forest / Timber Reserve	Private	Other eg. Road Reserve, Quarry, Loc Gov't Reserve	Historic (A3,A4,B2 ,C2, D2,F1, H1)	Social (G1)	Aestheti c (E1)
1I/57	Lamington National Park Cultural Landscape	Landscape [HC.LS]	✓				✓		
1I/59	Canungra Tramway Complex	Forestry and Timber [HC.FT]			✓		✓		
1J/10.1	Rayner's Sawmill	Forestry and Timber Industry [HC.FT]			✓		✓		
1J/14	Mt Cougal Sawmill Complex	Forestry and Timber Industry [HC.FT]	✓				✓		
1J/15	Springbrook National Park Cultural Landscape	Landscape [HC.LS]	✓				✓		
1J/16	Springbrook Road Complex	Road Transport [HC.RD]				✓	✓		
1L/12	Upper Numinbah Valley Cultural Landscape	Landscape [HC.LS]	✓	✓	✓	✓		✓	✓
1N/11.2	Camp Mountain Rail Crash Cairn	Rail Transport [HC.RL]				✓	✓		
1N/29	Brisbane Forest Park Cultural Landscape	Landscape [HC.LS]	✓	✓		✓	✓	✓	✓
1O/2	Goomburra Timber-Getters' Hut	Forestry and Timber Industry [HC.FT]		✓			✓		
1P/21	Spicers Gap Road Complex	Road Transport [HC.RD]	✓		✓	✓	✓		
1P/22	Cunningham's Gap & Highway	Landscape [HC.LS]	✓	✓	✓	✓		✓	
1Q/16	Tamborine National Park Cultural Landscape	Landscape [HC.LS]	✓				✓		
1R/1	Mary Cairncross Park,	Parks, Gardens, Trees [HC.PG]				✓	✓		

DoE File Ref.	Place	Group (Refer following table for no's within each group)	Tenure				Criteria above threshold		
			National Park / Conservat ion Park	State Forest / Timber Reserve	Private	Other eg. Road Reserve, Quarry, Loc Gov't Reserve	Historic (A3,A4,B2 ,C2, D2,F1, H1)	Social (G1)	Aestheti c (E1)
	Blackall Range								
1V/2	Point Glorious Lookout	Landscape [HC.LS]		✓				✓	
1W/1	Cossart's Sawmill, Dugandan	Forestry and Timber Industry [HC.FT]			✓		✓		
1W/2	Queen Mary Falls Sawmill	Forestry and Timber Industry [HC.FT]			✓		✓		
1X/1	Neranwood Tramway	Forestry and Timber Industry [HC.FT]			✓		✓		
4C/8	Jimna Fire Tower	Forestry and Timber Industry [HC.FT]		✓			✓	✓	
4C/20	Jimna Township Complex	Forestry and Timber Industry [HC.FT]			✓		✓		
4C/21	Sunday Creek Complex	Education [HC.ED]		✓		✓	✓	✓	
4E/1	Imbil Forest Station	Forestry and Timber Industry [HC.FT]		✓			✓		
4E/3	Foreign Legion Camp Site	Forestry and Timber Industry [HC.FT]		✓			✓		
4E/12	Charlie Moreland State Forest Park	Recreation & Entertainment [HC.RE]		✓			✓		
4E/19	Kenilworth Forest Station	Forestry and Timber Industry [HC.FT]		✓			✓		
4Q/6	Brooyar Fire Tower No. 11	Forestry and Timber Industry [HC.FT]		✓			✓		
4R/2	Mt Clara Copper Smelter	Mining and Mineral Processing [HC.MN]		✓			✓		
4W/1	Elgin Vale Sawmill	Forestry and Timber Industry [HC.FT]				✓	✓	✓	
5A/5	Wongi Waterholes	Landscape [HC.LS]		✓				✓	

DoE File Ref.	Place	Group (Refer following table for no's within each group)	Tenure				Criteria above threshold		
			National Park / Conservat ion Park	State Forest / Timber Reserve	Private	Other eg. Road Reserve, Quarry, Loc Gov't Reserve	Historic (A3,A4,B2 ,C2, D2,F1, H1)	Social (G1)	Aestheti c (E1)
5A/7	Former Maryborough - Gayndah Road [Maryborough - Degilbo Section]	Road Transport [HC.RD]		✓	✓	✓	✓	✓	
5AA/45	Fraser Island Cultural Landscape	Landscape [HC.LS]	✓		✓	✓	✓	✓	✓
5AD/1	Pettigrew and Sims Sawmill site, Dundathau	Forestry and Timber Industry [HC.FT]			✓	✓	✓		
5AE/1	Mungar Tramway	Forestry and Timber Industry [HC.FT]			✓	✓	✓		
5AF/1	Tiaro Sawmill	Forestry and Timber Industry [HC.FT]			✓		✓		
5AG/1	John Bidwill's Grave and remnant garden	Parks, Gardens, Trees [HC.PG]			✓	✓	✓	✓	
5AH/1	Teddington Scrub and Weir	Parks, Gardens, Trees [HC.PG]				✓		✓	
5AI/1	Original Maryborough Site	Landscape [HC.LS]				✓	✓		✓
5C/4	Woco Creek Trestle Bridge	Rail Transport [HC.RL]		✓			✓		
5C/6	Single Tree Fire Lookout	Forestry and Timber Industry [HC.FT]		✓			✓		
5H/1	Former St Mary's Forest Station / Sandy Creek Outdoor Learning Centre	Forestry and Timber Industry [HC.FT]		✓			✓		
5I/1	Pomona District School Memorial Forestry Plot	Monuments & Memorials [HC.MM]		✓				✓	
5L/1	Site of 'Bell's Tree' Reserve	Parks, Gardens, Trees [HC.PG]			✓			✓	

DoE File Ref.	Place	Group (Refer following table for no's within each group)	Tenure				Criteria above threshold		
			National Park / Conservat ion Park	State Forest / Timber Reserve	Private	Other eg. Road Reserve, Quarry, Loc Gov't Reserve	Historic (A3,A4,B2 ,C2, D2,F1, H1)	Social (G1)	Aestheti c (E1)
5N/2	Mill Point Complex	Forestry and Timber Industry [HC.FT]	✓				✓		
5N/9	Harry's Hut	Recreation & Entertainment [HC.RE]	✓					✓	
5N/22	Cooloolo Tramway Complex	Forestry and Timber Industry [HC.FT]	✓				✓		
5Q/5	Engraved Kauri Pine, Mothar Mountain	Landscape [HC.LS]		✓			✓		
6D/1	Glassford Mining Area	Mining and Mineral Processing [HC.MN]		✓			✓	✓	
6E/9	Goodnight Scrub	Landscape [HC.LS]				✓		✓	
6L/1	Waterview Sawmill	Forestry and Timber Industry [HC.FT]			✓		✓		
6M/1	Fleming's Sawmill	Forestry and Timber [HC.FT]			✓		✓		
6Q/1	Boolboonda Tunnel	Rail Transport [HC.RL]			✓		✓	✓	
6R/1	Town of 1770 Environs Cultural Landscape	Landscape [HC.LS]	✓		✓	✓	✓	✓	✓
6S/1	Takilberan Rock	Landscape [HC.LS]		✓	✓			✓	
8B/34	Bunya Mountains Cultural Landscape	Landscape [HC.LS]	✓	✓	✓	✓	✓	✓	
8D/8	Yarraman Tramway Complex	Forestry and Timber Industry [HC.FT]		✓	✓	✓	✓		
8F/11	Munro's Complex	Forestry and Timber Industry [HC.FT]		✓	✓		✓		
8G/1	Amaroo Environmental Education Centre - Pechey	Forestry and Timber Industry [HC.FT]		✓			✓		
8I/2	Grandchester Sawmill	Forestry and Timber Industry			✓		✓		

DoE File Ref.	Place	Group (Refer following table for no's within each group)	Tenure				Criteria above threshold		
			National Park / Conservat ion Park	State Forest / Timber Reserve	Private	Other eg. Road Reserve, Quarry, Loc Gov't Reserve	Historic (A3,A4,B2 ,C2, D2,F1, H1)	Social (G1)	Aestheti c (E1)
		[HC.FT]							
8I/3	Wright's Quarry Complex [JH Wagner & Sons]	Mining and Mineral Processing [HC.MN]		✓	✓		✓		
8K/9	Mt Binga Fire Tower	Forestry and Timber Industry [HC.FT]		✓			✓		
8L/7	Hill 60	Monuments & Memorials [HC.MM]		✓			✓		
8M/8	Timber Corporation Sawmill, Nanango	Forestry and Timber Industry [HC.FT]			✓		✓		
8N/1.1	Cressbrook Tramway	Forestry and Timber Industry [HC.FT]		✓	✓		✓		
Aesthetic1	Bunya Mountains Aesthetic Precinct	Landscape [HC.LS]	✓	✓	✓	✓			✓
Aesthetic10	Conondale Range Aesthetic Precinct	Landscape [HC.LS]	✓	✓					✓
Aesthetic11	Cooloola Aesthetic Precinct	Landscape [HC.LS]	✓	✓		✓			✓
Aesthetic12	Mount Coolum Aesthetic Precinct	Landscape [HC.LS]	✓		✓	✓			✓
Aesthetic13	Upper Coomera Valley Aesthetic Precinct	Landscape [HC.LS]			✓	✓			✓
Aesthetic14	Mount Cooroy Aesthetic Precinct	Landscape [HC.LS]	✓		✓	✓			✓
Aesthetic15	Crow's Nest Falls National Park Aesthetic Precinct	Landscape [HC.LS]	✓						✓
Aesthetic16	Currumbin Valley Aesthetic	Landscape [HC.LS]	✓		✓	✓			✓

DoE File Ref.	Place	Group (Refer following table for no's within each group)	Tenure				Criteria above threshold		
			National Park / Conservat ion Park	State Forest / Timber Reserve	Private	Other eg. Road Reserve, Quarry, Loc Gov't Reserve	Historic (A3,A4,B2 ,C2, D2,F1, H1)	Social (G1)	Aestheti c (E1)
	Precinct								
Aesthetic17	D'Aguilar Range Aesthetic Precinct	Landscape [HC.LS]	✓	✓	✓	✓			✓
Aesthetic2	Blackall Range Aesthetic Precinct	Landscape [HC.LS]	✓	✓	✓	✓			✓
Aesthetic20	Imbil Forests Aesthetic Precinct	Landscape [HC.LS]		✓	✓	✓			✓
Aesthetic21	Jimna Forests Aesthetic Precinct	Landscape [HC.LS]		✓	✓	✓			✓
Aesthetic22	Kondalilla Falls National Park Aesthetic Precinct	Landscape [HC.LS]	✓	✓		✓			✓
Aesthetic23	Kroombit Tops Aesthetic Precinct	Landscape [HC.LS]	✓	✓		✓			✓
Aesthetic24	Lamington National Park Aesthetic Precinct	Landscape [HC.LS]		✓	✓	✓			✓
Aesthetic25	Many Peaks Range Aesthetic Precinct	Landscape [HC.LS]	✓	✓	✓	✓			✓
Aesthetic46	Maroochy Remnant Bushland Aesthetic Precinct	Landscape [HC.LS]	✓			✓			✓
Aesthetic26	Moogerah Peaks Aesthetic Precinct	Landscape [HC.LS]	✓		✓	✓			✓
Aesthetic27	Moreton Is. Aesthetic Precinct	Landscape [HC.LS]	✓		✓	✓			✓
Aesthetic28	Mount Barney Aesthetic	Landscape [HC.LS]	✓	✓	✓	✓			✓

DoE File Ref.	Place	Group (Refer following table for no's within each group)	Tenure				Criteria above threshold		
			National Park / Conservat ion Park	State Forest / Timber Reserve	Private	Other eg. Road Reserve, Quarry, Loc Gov't Reserve	Historic (A3,A4,B2 ,C2, D2,F1, H1)	Social (G1)	Aestheti c (E1)
	Precinct								
Aesthetic29	Mount Lindesay Aesthetic Precinct	Landscape [HC.LS]	✓		✓	✓			✓
Aesthetic3	Bribie Island Aesthetic Precinct	Landscape [HC.LS]	✓		✓	✓			✓
Aesthetic30	Mount Maroon Aesthetic Precinct	Landscape [HC.LS]	✓		✓	✓			✓
Aesthetic31	Mount Perry Ranges Aesthetic Precinct	Landscape [HC.LS]		✓	✓	✓			✓
Aesthetic32	Nerang State Forest Aesthetic Precinct	Landscape [HC.LS]		✓		✓			✓
Aesthetic33	Noosa Headland Aesthetic Precinct	Landscape [HC.LS]	✓			✓			✓
Aesthetic35	Peregian Aesthetic Precinct	Landscape [HC.LS]	✓		✓	✓			✓
Aesthetic36	Ravensbourne National Park Aesthetic Precinct	Landscape [HC.LS]	✓			✓			✓
Aesthetic38	Scenic Rim Aesthetic Precinct	Landscape [HC.LS]	✓	✓	✓	✓			✓
Aesthetic39	Springbrook Plateau Aesthetic Precinct	Landscape [HC.LS]	✓	✓	✓	✓			✓
Aesthetic4	Buderim Mountain Aesthetic Precinct	Landscape [HC.LS]			✓	✓			✓
Aesthetic40	North Stradbroke Island Aesthetic Precinct	Landscape [HC.LS]	✓		✓	✓			✓
Aesthetic41	Upper Tallebudgera Valley	Landscape [HC.LS]	✓		✓	✓			✓

DoE File Ref.	Place	Group (Refer following table for no's within each group)	Tenure				Criteria above threshold		
			National Park / Conservat ion Park	State Forest / Timber Reserve	Private	Other eg. Road Reserve, Quarry, Loc Gov't Reserve	Historic (A3,A4,B2 ,C2, D2,F1, H1)	Social (G1)	Aestheti c (E1)
	Aesthetic Precinct								
Aesthetic42	Tamborine Mountain Aesthetic Precinct	Landscape [HC.LS]	✓	✓	✓	✓			✓
Aesthetic43	Yandina Remnant Forest Aesthetic Precinct	Landscape [HC.LS]			✓	✓			✓
Aesthetic44	Yarraman Forests Aesthetic Precinct	Landscape [HC.LS]	✓	✓	✓	✓			✓
Aesthetic6	Cania Gorge Aesthetic Precinct	Landscape [HC.LS]	✓		✓	✓			✓
Aesthetic7	Burleigh Heads Aesthetic Precinct	Landscape [HC.LS]	✓			✓			✓
Aesthetic8	Canungra Gorge Aesthetic Precinct	Landscape [HC.LS]	✓			✓			✓
Aesthetic9	Cedar Creek (Tamborine) Aesthetic Precinct	Landscape [HC.LS]	✓	✓	✓	✓			✓
TOTALS			51	64	69	60	76	25	47
(NOTE: As places may be located across more than one tenure, or meet more than one value, the sums of these totals will be higher than the actual number of places above National Estate threshold.)									

APPENDIX 10
Comparison of places against themes

**Comparison of Regional Forest Themes, against SEQ biogeographic region Themes,
against potential National Estate places**

REGIONAL FOREST THEMES		THEMATIC OVERVIEW OF THE SOUTH EAST QUEENSLAND BIOGEOGRAPHIC REGION - FORESTED AREAS		HISTORIC PROJECT
THEME	SUB-THEMES	THEME Sub-Themes	EXAMPLES OF THEMES After Powell, J (1998)	EXAMPLES OF THEMES - POTENTIAL NATIONAL ESTATE PLACES, OR PARTS OF A NATIONAL ESTATE COMPLEX
TRACING THE EVOLUTION OF A CONTINENT'S SPECIAL ENVIRONMENT HT.01				
		Assessing scientifically diverse environments HT 01.03	<i>Early conservationists, the Acclimatisation Society of Queensland , early National Parks movement, conservation movement of 1960s- 1990s</i>	Tamborine National Park Cultural Landscape Lamington National Park Cultural Landscape Bunya Mountains Cultural Landscape
Appreciating the natural wonders of Australia HT.01.04				
PEOPLING THE CONTINENT HT.02				
		Migrating to seek opportunity HT 02.04.02	<i>Early settlers in Queensland; Displaced persons, post-WW2, working in forestry camps</i>	Foreign Legion Camp Site
		Promoting settlement on the land through selection and group settlement HT 02.05	<i>Moves towards closer settlement (1860s, 1970s), pressure to alienate land (up to 1930s), pressure for the freeholding of</i>	Mt Mee Banana Settlement Complex Beerburum Soldier Settlement Complex

			<i>leasehold lands (1950s, 1960s, 1970s)</i>	
	Indigenous - displacing Aboriginal people HT.02.06.02	Displacing Aboriginal people HT 02.06.02	<i>Early explorers, pastoralists and timber getters in conflict with Aboriginal people (eg. the Wide Bay area and Fraser Island)</i>	

DEVELOPING LOCAL, REGIONAL AND NATIONAL ECONOMIES HT.03				
Exploring and surveying HT.03.02		Surveying the continent and assessing its potential HT 03.02	<i>Early European explorers; cedar cutters along coastal river systems</i>	
	Exploring HT.03.02.04			
	Surveying HT.03.02.05			Roberts Survey Tree ‘Coolya’ KCB Tree, Kilcoy
	Fishing and whaling HT.03.03.02			
	Mining and mineral processing HT.03.03.03			Mt Clara Copper Smelter Glassford Mining Area
	Mining for gold HT.03.03.03.01			Sunday Creek Complex (Jimna Gold Diggings)
	Mining for coal HT.03.03.03.02			
	Producing lime and cement HT.03.03.03.03			
	Quarrying HT.03.03.03.04			Wright’s Quarry complex [JH Wagner & Sons]
	Extracting oil & gas HT.03.03.03.05			
	Mineral processing HT.03.03.03.06			Mt Clara Copper Smelter Glassford Mining Area

--	--	--	--	--

	Mining for other resources HT.03.03.03.09			
	Exploiting the forest HT.03.03.04	Making the forests into a saleable resource HT 03.03.04	<i>Forestry, timber products, beekeeping, duboisia</i>	
	Extracting timber HT.03.03.04.01			Goomburra Timber-Getters' Hut
	Processing timber HT.03.03.04.02			Lahey's & Enright's Sawmill Elgin Vale Sawmill Pettigrew & Sim's Sawmill Site, Dundathu Waterview sawmill Jimna Township (Jimna sawmill site) Mill Point Complex (Mill Point sawmill) Fraser Island (McKenzie's sawmill site) Mt Cougal Sawmill Complex (sawmill) Mt Archer Complex (sawmill) Bunya Mountains Cultural Landscape (sawmills) Campbellville Sawmill Complex
	Transporting timber HT.03.03.04.03			Canungra Tramway Complex Cressbrook Tramway Mungar Tramway Jimna Township (Jimna tramway) Mill Point Complex (tramway) Cooloola Tramway Complex Fraser Island (series of tramways) Bunya Mountains Cultural Landscape (tramway to Wengenville) Yarraman Tramway Complex Mt Mee Tramway

	Manufacturing charcoal HT.03.03.04.04			Daisy Hill charcoal pit
	Distilling eucalyptus oil HT.03.03.04.05			
	Cutting sandalwood HT.03.03.04.06			
	Cutting and processing wattle bark HT.03.03.04.07			
	Managing the forests HT.03.03.04.30		<i>Understanding the forests - studying timber types and uses, experiments with planting systems Exploiting the forests - extracting timber, processing and transporting timber, sawmilling Managing the forests - fire regimes, silvicultural operations, plantations, forestry administration</i>	
	Managing the forests - Coping with fire in the forest HT.03.03.04.30.01			Jimna fire tower Brooyar fire tower Single Tree fire tower Mt Binga fire tower Salvage log dump
	Managing the forests - Working in the forest HT.03.03.04.30.02			Foreign Legion camp Goodnight Scrub
	Managing the forests - Renewing the forest resource HT.03.03.04.30.03			Beerwah/Beerburum complex (nursery) Fraser Island (Mitchell nursery site, Wanggoolba nursery site)

	Managing the forests - Administering the forest HT.03.03.04.30.04			Kenilworth Forest Station Beerwah/Beerburrum Complex Fraser Island (Central Station, Eurong, Ungowa) Former St Marys Forest Station Goodnight Scrub Imbil Forest Station Former Mt Mee Married Quarters
	Managing the forests - Protecting the forest, eg protest site HT.03.03.04.30.05			
Engaging in primary production HT.03.04		Developing sheep and cattle industries HT 03.04	<i>Dairying and pastoralism and land clearing associated with both activities</i>	
	Grazing HT.03.04.01			
	Trapping and hunting HT.03.04.02			
	Primary production, non-pastoral, eg apiary, orchard, market garden HT.03.04.90			Beerburrum Soldier Settlement Complex Mt Mee Banana Settlement Complex
Moving goods and people HT.03.07				
	Moving goods and people to and from Australian ports HT.03.07.01	Shipping to and from Australian ports HT 03.07.01	<i>Use of ships for transport of timber exports, development of major ports (eg. Maryborough)</i>	
	Moving goods and people on inland waterways HT.03.07.02	Making economic use of inland waterways HT 03.07.02	<i>Use of coastal streams for rafting and punting of timber (eg. the Nerang, the Maroochy, the Great Sandy Straits)</i>	Fraser Island (log dumps)

	Moving goods and people on land HT.03.07.03	Moving goods and people on land HT 03.07.03	<i>Railway development (including private railways and tramways) and the opening up of timber lands, motorised transport during the early part of the 20th century. Impact of improved transport networks on access to timber resources.</i>	
	Moving goods and people by rail HT.03.07.03.01			Woco Creek Trestle Bridge Boolboonda Tunnel
	Moving goods and people by roads HT.03.07.03.02			Springbrook Road Complex Spicers Gap Road Complex Bankfoot House Former Maryborough - Gayndah Road
	Moving goods and people by air HT.03.07.03.04			
		Altering the environment for economic development HT 03.10		
		Clearing vegetation HT 03.10.04	<i>Ringbarking, clear-felling</i>	
Manufacturing and Processing HT.03.12				
		Developing an Australian engineering and construction industry HT 03.13		
		Using Australian materials in construction HT 03.13.02	<i>Timber housing</i>	

--	--	--	--	--

BUILDING SETTLEMENTS, TOWNS AND CITIES HT.04				
		Selecting township sites HT 04.01.01	<i>Mill townships, forestry townships</i>	Jimna Township Mill Point Complex (settlement site) Campbellville Sawmill Complex
Providing services for settlements HT.04.02				
	Providing water HT.04.02.01			
	Providing electricity HT.04.02.02			
	Providing sewerage services HT.04.02.03			
Making towns to serve rural Australia HT.04.05				
	Settling HT.04.05.01			
WORKING 05				
		Working in harsh conditions HT 05.01	<i>Bullock drivers, timber cutters, log rafters</i>	Mt Archer complex

EDUCATING HT.06				
Establishing schools HT.06.02				Former St Marys Forest Station/Outdoor Learning Centre Crohamhurst Complex Sunday Creek Complex (Environmental Education Centre) Amaroo Environmental Education Centre Springbrook National Park Cultural Landscape (Information Centre)
		Training people for workplace skills HT 06.03	<i>Development of forestry schools, research and experimental centres, environmental education centres</i>	
GOVERNING HT.07				
	Providing for the common defence HT.07.05.02	Providing for the common defence HT 07.05.02	<i>Impact of WW2 on timber industry, forests as military training areas</i>	Fraser Island (Commando School site)
	Preparing to face invasion HT.07.05.02.01			
	Going to war HT.07.05.02.02			
	Incarcerating the accused and convicted HT.07.05.06	Incarcerating the accused and convicted HT 07.05.06	<i>Early penal settlement of Moreton Bay, prison farms on late 20th century</i>	
	Evading justice HT.07.05.06.01			

	Using convict labour HT.07.05.06.02			
		Conserving Australia's resources HT 07.05.10		
		Conserving fragile environments HT 07.05.10.01	<i>National Park movement</i>	Lamington National Park Cultural Landscape
		Conserving economically valuable resources HT 07.05.10.02	<i>Timber reserves, State Forests</i>	
DEVELOPING CULTURAL INSTITUTIONS AND WAYS OF LIFE HT.08				
Organising recreation HT.08.01		Organising recreation HT 08.01	<i>Development of public parks and gardens, recreation in State Forests (multiple-use)</i>	
	Playing and watching sports HT.08.01.01			
	Recreating in the outdoors HT.08.01.04			Jolly's Lookout Mary Caincross Park Charlie Moreland State Forest Park Fraser Island Bunya Mountains Cultural Landscape O'Reilly Cultural Complex Binna Burra Cultural Landscape Lamington National Park Cultural Landscape Springbrook National Park Cultural Landscape Tamborine National Park Cultural Landscape

	Experiencing the natural environment HT.08.01.05			Fraser Island Site of ‘Bell’s Tree’ Reserve Engraved Kauri Pine, Mothar Mountain Antarctic Beech Forest Scientific Area No. 1, Beerburum Diana’s Bath
Going on holiday HT.08.03				Charlie Moreland SFP Harry’s Hut Fraser Island O’Reilly Cultural Complex Binna Burra Cultural Landscape Bunya Mountains Cultural Landscape
Forming associations HT.08.05				
	Worshipping together HT.08.05.04			O’Reilly Cultural Landscape (church)
	Associating to pursue common leisure interests HT.08.05.05			
	Indigenous - establishing missions for Australia's indigenous peoples HT.08.05.03.04.02			Fraser Island (Bogimbah Mission site)
		Commemorating significant events and people HT 08.08	<i>Notable figures in the timber industry</i>	Camp Mountain Rail crash cairn Avenue of Honour, Mt Mee Pomona School Memorial Plot Imbil Hoop Pine Grove Hill 60 Stinson Complex (plaque & Bernard O’Reilly memorial)

	Pursuing excellence in science and technology HT.08.09.05			
--	--	--	--	--

	Understanding Australia's climate HT.08.09.05.01			Crohamhurst complex
	Conserving the environment HT.08.09.05.02			Scientific Area No. 1, Beerburum
MARKING THE PHASES OF LIFE HT.09				
Disposing of dead bodies HT.09.06				Mill Point complex (Cemetery) Stinson Complex Beerburum Soldier Settlement complex Campbellville sawmill complex

APPENDIX 11

Geographic grouping of potential National Estate places

**BROAD GEOGRAPHIC GROUPING OF
POTENTIAL NATIONAL ESTATE PLACES
Historic and Social values**

BROAD GEOGRAPHIC AREA Potential National Estate place	Places significant as part of potential National Estate place
LAMINGTON NP AREA	
O'Reilly Cultural Landscape	The Heartbreaker Stockyard Creek Track Duck Creek Road Luke O'Reilly's Residence O'Reilly Cattle Crush O'Reilly Dairy Uncle Pat's Log Cabin Pat & Luke O'Reilly's Selections Pat's Cabin St Joseph's Church Eucalyptus Quadrangulata Stand
Stinson Complex	Westray's Grave Stinson Wreck & Gravesite Bernard O'Reilly Memorial Stretcher Track Stinson Evacuation Site Lamington Exchange
Antarctic Beech Forest - Green Mountains	Oldest Antarctic Beech (Green Mountains)
Binna Burra Cultural Landscape	Bellbird Clearing Bellbird Lookout Binna Burra Mountain Lodge Binna Burra Mountain Lodge Cabins Christmas Camp 1933 Commemorative Hoop Pines Environmental Playground Environmental Study Centre Arthur Groom Memorial Sawmill Shed Goat Track Flying Fox - Binna Burra Mountain Lodge Win Bristow Garden Walk

<p>SOUTH COAST HINTERLAND</p> <p>Tamborine National Park</p>	<p>Forestry Camp - Palm Grove Jack Stevens Annexe (QNPWS Centre) Witches Chase Entrance Pillars Witches Chase Falls Shelter Shed Old Entry Sign - Witches Falls MacDonald Sign, MacDonald Park Old Walking Track Sign - Palm Grove Old Sign (Palm Grove) Palm Grove Rock Wall Harold Jenyns Lookout The Beacon Plaque - Lepidozamia Grove First Resident of Tamborine Mt Memorial Hilda Curtis Memorial</p>
<p>MAIN RANGE</p> <p>Spicer's Gap Road Complex</p> <p>Cunningham's Gap and Highway Goomburra Timber-Getters' Hut Cossart's Sawmill, Dugandan Queen Mary Falls Sawmill</p>	<p>1988 Bi-centennial Re-enactment Plaque Pioneer Graves Moss' Well Spicer's Gap Road Spicer's Gap Road Plaque Alphen Inn Site Balbi Inn Site Main Range Hotel Governor's chair Old Telegraph Line</p>
<p>BRISBANE</p> <p>Daisy Hill Charcoal Pit Bunyaville Military Bunker</p>	
<p>D'AGUILAR RANGE</p> <p>Brisbane Forest Park</p> <p>Camp Mountain Rail Crash Cairn</p>	<p>Maiala National Park Picnic Area Manorine National Park Picnic Area Boombana Picnic Area Jolly's Lookout</p>

Mt Mee Banana Settlement Complex Diana's Bath Mt Archer Complex Avenue of Honour, Mt Mee Mt Mee Tramway Site Mt Mee Bullock Trail Mt Mee Former Married Quarters	Mt Mee West Banana Settlement Mt Mee West Banana Blocks Site Mt Mee West Banana Settlement Huts Mt Archer Bullock Wagons and Timber Chutes Kropp's Sawmill Site
GRANDCHESTER Grandchester Sawmill	
CROWS NEST/RAVENSBOURNE Munro's Complex Amaroo Environmental Education Centre Wright's Quarry Complex	Munro's Argyle Sawmill Palm Tree Sawmill Site A & D Munro's Tramway Wright's Helidon Quarry Wright's Special Lease
BUNYA MOUNTAINS Bunya Mountains Cultural Landscape	Gertrude's Grave Timber Cutting Camp 1860s - Horse Gully Dennings Sawmill Site Great Bunya Sawmill Site Andersen's Tramway Carbine's Chute Wengenville Sawmill and Township Wengenville Bullock Wagon Mt Mowbullen Guest House Cedarvale Burton's Well - Old Stone & Timber Sign John Sydney gympie gympie tree Soldiers' Road Burtens Well Bunya Mountains Conservation Park Munro's Camp Cattle Creek Sawmill

YARRAMAN - NANANGO - TAROMEIO Yarraman Tramway Complex Hill 60 Mt Binga Fire Tower Timber Corporation Sawmill, Nanango	Yarraman Tramway Yarraman Stables Camp
KILCOY KCB Tree (Kilcoy/Cressbrook/Mt Brisbane) Cressbrook Tramway	
BELLTHORPE Brandon's Sawmill Site Crohamhurst Complex Mary Cairncross Park	Crohamhurst School Site Plantings Jones Homestead Site Cohamhurst Observatory
BEERWAH/BEERBURRUM Beerwah/Beerburrum Complex Beerburrum Soldier Settlement Complex Salvage Log Dump Scientific Area No 1, Beerburrum Bankfoot House Campbellville Sawmill Complex Glasshouse Mountains	Beerburrum Nursery Beerburrum Forestry Office Beerwah Forest Station Beerburrum Cemetery R515 Beerburrum Hospital Campbellville Sawmill Site Campbellville Cemetery
SOUTH BURNETT Mt Clara smelter Elgin Vale Sawmill	

JIMNA - SUNDAY CREEK Jimna Township complex Jimna Fire Tower Sunday Creek complex	Jimna Sawmill site Jimna Tramway Jimna Township Sunday Creek Environmental Education Centre Jimna Gold Diggings
MARY VALLEY Imbil Forest Station Foreign Legion Camp Site Kenilworth Forest Station Charlie Moreland SFP Point Glorious Lookout Brooyar Fire Tower	Imbil Hoop Pine Grove
TEWANTIN - POMONA - KIN KIN Pomona District School Memorial Plot Site of Bell's Tree Reserve Engraved Kauri Pine, Mothar Mountain	
COOLOOLA Coolooloolo Tramway complex Mill Point complex Harry's Hut	Rafting Ground, Seary's Creek Corduoy Crossing, Seary's Creek Coolooloolo Creek Terminus Site Jetty ruins, Poverty Point Terminus Cut and fill, Coolooloolo Tramway Site of steam engine and winch Cemetery, Mill Point

<p>FRASER ISLAND</p> <p>Fraser Island</p>	<p>Deep Creek Log Dump Former Ungowa Forestry Office Ungowa Boatshed and Jetty Wanggoolba Log Dump Wanggoolba Tramway Wanggoolba Forest Station Site Wanggoolba Nursery Site Central Station Forestry Camp Pile Valley Coolooloi Creek Sandmining Jetty Hook Point Old Sandmining Road McKenzie's Timber Operations Site McKenzie's Log Dump McKenzie's Jetty McKenzie's Tramway Fraser Island Commando School Site Poyungan Creek Log Dump Postan's Logging Camp Urang Creek Log Dump Urang Tramway Petrie's Camp Old Forest Station Site Dipuying Nursery Site Mitchell Nursery Site Bogimbah Log Dump Putthoo Log Dump Old Yidney Log Dump Garry's Log Dump Tobys Gap Airstrip Dilli Village Dilli Village Machinery Shed Buff Creek Landing Site</p>
<p>MARYBOROUGH</p> <p>Tiaro Sawmill, Tiaro Former St Mary's Forest Station / Sandy Creek Outdoor Learning Centre</p> <p>Former Maryborough - Gayndah Road (Maryborough - Degilbo section)</p> <p>Mungar Tramway Pettigrew and Sims Sawmill site, Dundathu Wongi Waterholes John Bidwill's Grave Teddington Scrub and Weir Original Maryborough Site</p>	<p>Broomfield Township Site</p>

HOWARD - CORDALBA Single Tree fire lookout Woco Creek trestle bridge	
GOODNIGHT SCRUB Goodnight Scrub Complex	Goodnight Scrub Forestry Office Site Goodnight Scrub Forestry Barracks Site One Tree Hill Fire Cabin Paddy's Camp Site Kalliwa Camping Area Kalliwa Hut Marble Mine Site Old Goodnight Scrub Forest Station Site
MT PERRY Boolboonda Tunnel Takilberan Rock	
BUNDABERG Waterview sawmill	
MIRIAM VALE / 1770 Cook's Landing Place, Town of 1770	
MONTO - MANY PEAKS - CALLIOPE Flemings Sawmill, Builyan Glassford copper mine ruins	
WHOLE REGION National Trail	

REFERENCES

- Anderson J, Jenkins L, Loch C, Thatcher I and Wharton G (1995a) *Cultural Heritage Study of Daisy Hill State Forest Park* A report for the Qld Dept of Environment and Heritage by History Dept HT419 students, University of Queensland: Brisbane
- Anderson J, Loch C, Saunders A, Earner R and Wilkins I (1995b) *Cultural Heritage Study of the Bunyaville State Forest* University of Queensland: Brisbane
- Australian Heritage Commission (1994a) *Places of Cultural Heritage Value in Forests. The cultural methods used in the Central Highlands and East Gippsland joint forest projects*
- Australian Heritage Commission and Conservation & Natural Resources Victoria (1994b) *National Estate Values in the Central Highlands of Victoria. Draft project report*
- Department of Natural Resources (1998) RFA Information Kit
- Department of Primary Industries (Forestry) (1996) *DPI Forestry 95-96 Yearbook* Brisbane
- Forest Assessment Unit, Department of Environment (1998a) CRA Database - Cultural Heritage
- Forest Assessment Unit, Department of Environment (1998b) *National Estate: Place documentation. Aesthetic, Historic and Social Values* A report for the Joint Commonwealth and Queensland RFA Steering Committee
- Forest Assessment Unit, Department of Environment (1998c) *National Estate: Social values* A report for the Joint Commonwealth and Queensland RFA Steering Committee
- Hibbard A and Crosby Dr E (1991) *Mill Point Conservation Plan, Cooloolo National Park* A Report for the Queensland Department of Environment and Heritage
- Jenkins L (1995) *Queensland Cultural Data Audit* A report for the Department of Environment and Heritage: Brisbane
- Kerr J (1998) *Forest Industry Heritage Places Study: Sawmills and tramways. South Eastern Queensland* A report for the Department of Environment
- Kerr Dr R (1992) *Queensland Historical Mining Sites Study* A report for the Department of Environment and Heritage
- Kowald Dr M (1996) *Draft Historical overview of the South East Queensland biogeographic region with particular reference to forested areas* Department of Environment
- Lennon J and Townsley M (1998) *National Estate: Aesthetic values* A report for the Joint Commonwealth and Queensland RFA Steering Committee
- Lennon J and Associates (1998, in preparation) *Management Guidelines* A report for the Joint Commonwealth and Queensland RFA Steering Committee

- Luxford [Woodman] C (1995) *A Cultural Heritage Study of Mt Mee SF 893* A report for the Department of Environment and Heritage submitted to QUT for Australian Studies Unit in BA (Humanities) Queensland University of Technology: Brisbane
- Pearson Dr M (1994) *Mining Heritage Places Study* A report for the Queensland Department of Environment and Heritage
- Petrie R (1995) *Early days on Fraser Island 1913-1922* GO BUSH Safaris: Gladesville, NSW
- Powell Dr J (1998a) *People and Trees. A thematic history of the south east Queensland biogeographic region, with particular reference to forested areas 1823-1997* A report for the Joint Commonwealth and Queensland RFA Steering Committee
- Powell Dr J (1998b) *Travel routes, forest towns and settlements* A report for the Joint Commonwealth and Queensland RFA Steering Committee
- Sattler PS and Williams RD (eds) (1998, in preparation) *The conservation status of Queensland's bioregional ecosystems. Chapter 12 Southeast Queensland* (PAR Young) A Conservation technical report, Department of Environment
- Townrow K, Langford J and Cao L (1993) *Postan's Logging Camp, Fraser Island: a cultural heritage assessment* Unpublished report for the Queensland Department of Environment and Heritage
- Uniquist (1995) *South East Queensland 2001 cultural heritage places study Stage 1* A report for the Queensland Department of Environment and Heritage

ABBREVIATIONS

AHC	Australian Heritage Commission
CRA	Comprehensive Regional Assessment
DME	Department of Mines and Energy
DNR	Department of Natural Resources
DoE	Department of Environment
DPI	Department of Primary Industries
EA	Environment Australia
FAU	Forest Assessment Unit
FPS	Forest Protection Society
GIS	Geographic Information System
GPC	Greater Planning Certainty for Queensland's Wood Products based on Crown Native Forests project
GPS	Global Positioning System
KCB	Kilcoy/Cressbrook/Mt Brisbane
LGA	Local Government Area
NFPS	National Forest Policy Statement
NP	National Park
QHR	Queensland Heritage Register pursuant to the <i>Queensland Heritage Act 1992</i>
QMC	Queensland Mining Council
QNPWS	Queensland National Parks and Wildlife Service
RFA	Regional Forest Agreement
RNE	Register of the National Estate
SEQ	South East Queensland
SEQ2001	South East Queensland 2001
SF	State Forest
UQ	University of Queensland