

Map 12 GIPPSLAND

Comprehensive Regional Assessment

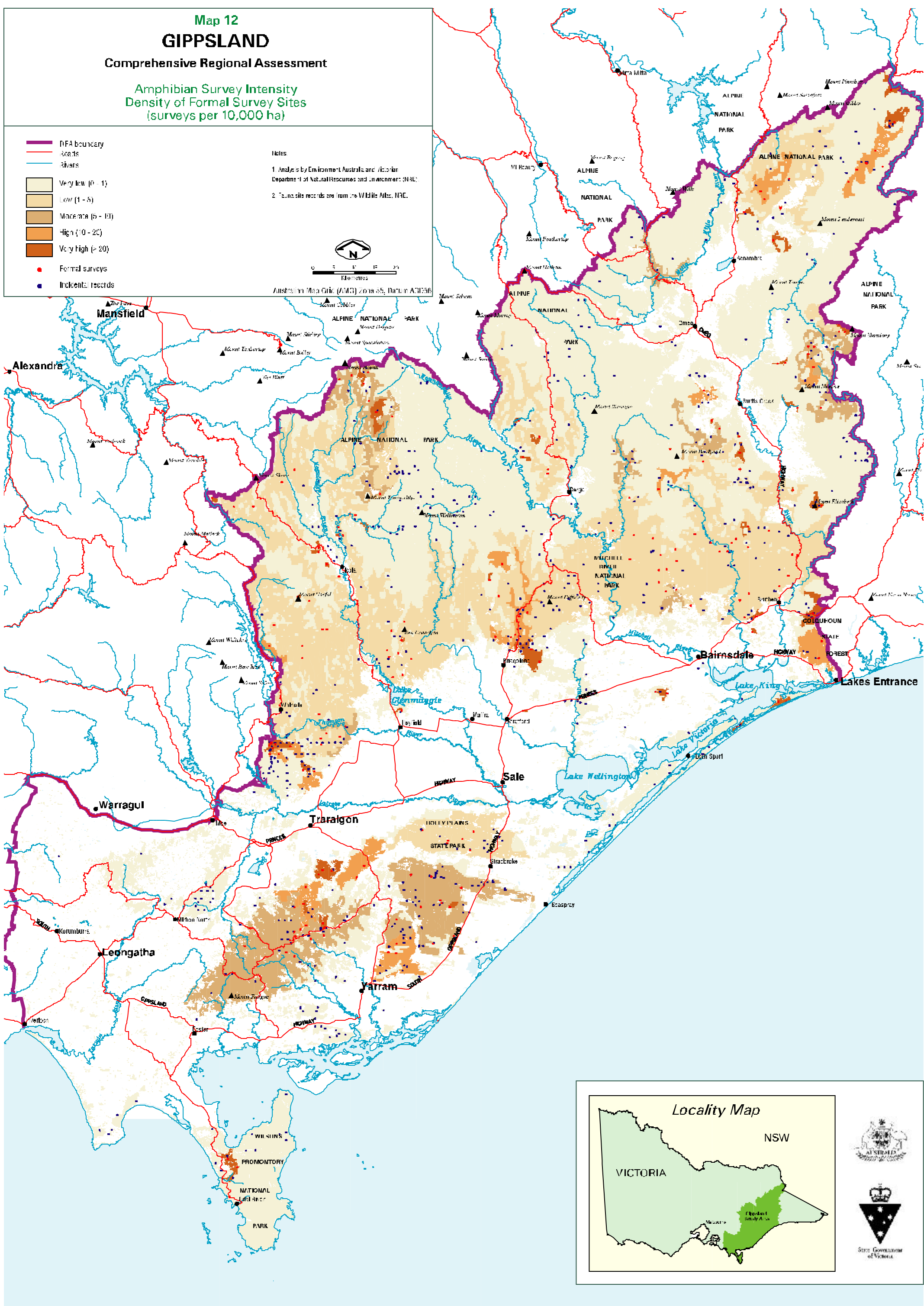
Amphibian Survey Intensity
Density of Formal Survey Sites
(surveys per 10,000 ha)

-  DFA boundary
-  Roads
-  Rivers
-  Very low (0 - 1)
-  Low (1 - 5)
-  Moderate (5 - 10)
-  High (10 - 20)
-  Very High (> 20)
-  Formal surveys
-  Incidental records

Notes
1. Analysis by Environment Australia and Victorian Department of Natural Resources and Environment (DNRE)
2. Taxon site records are from the Wildlife Atlas, NRE.



Australian Map Grid (AMG) Zone 55, Datum AD83



Locality Map

