

Map 28

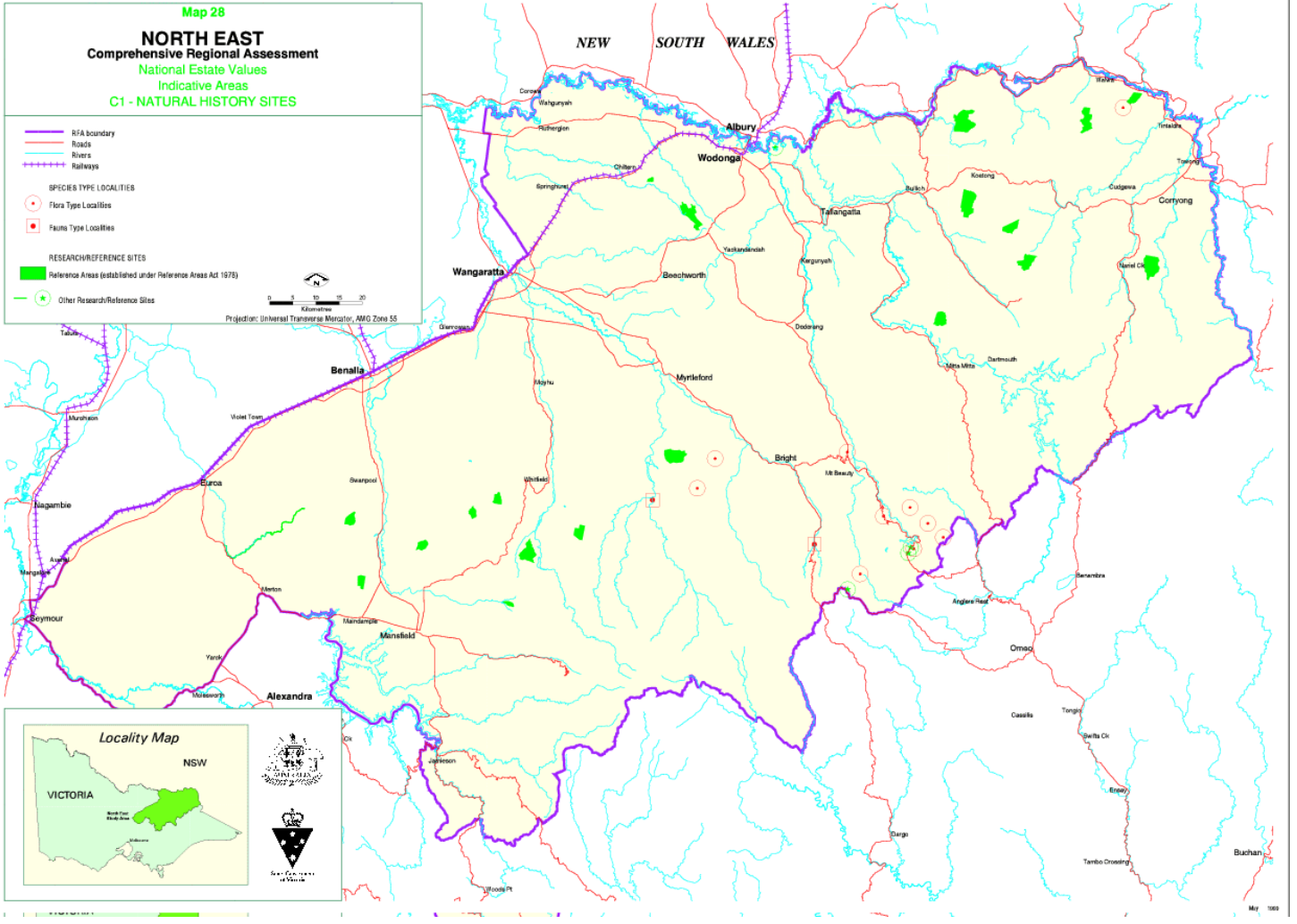
**NORTH EAST**  
**Comprehensive Regional Assessment**  
National Estate Values  
Indicative Areas  
C1 - NATURAL HISTORY SITES

Legend:

- RFA boundary (thick purple line)
- Roads (red line)
- Rivers (blue line)
- Railways (dashed purple line)
- SPECIES TYPE LOCALITIES
  - Flora Type Localities (red circle with dot)
  - Fauna Type Localities (red square)
- RESEARCH/REFERENCE SITES
  - Reference Areas (established under Reference Areas Act 1978) (green shaded area)
  - Other Research/Reference Sites (green star)

Scale: 0 5 10 20 Kilometres

Projection: Universal Transverse Mercator, AMG Zone 55



**Locality Map**

The Locality Map shows the state of Victoria and the border with New South Wales (NSW). A green shaded area in the north-eastern part of Victoria indicates the location of the study area. The map includes the coat of arms of Victoria and NSW.