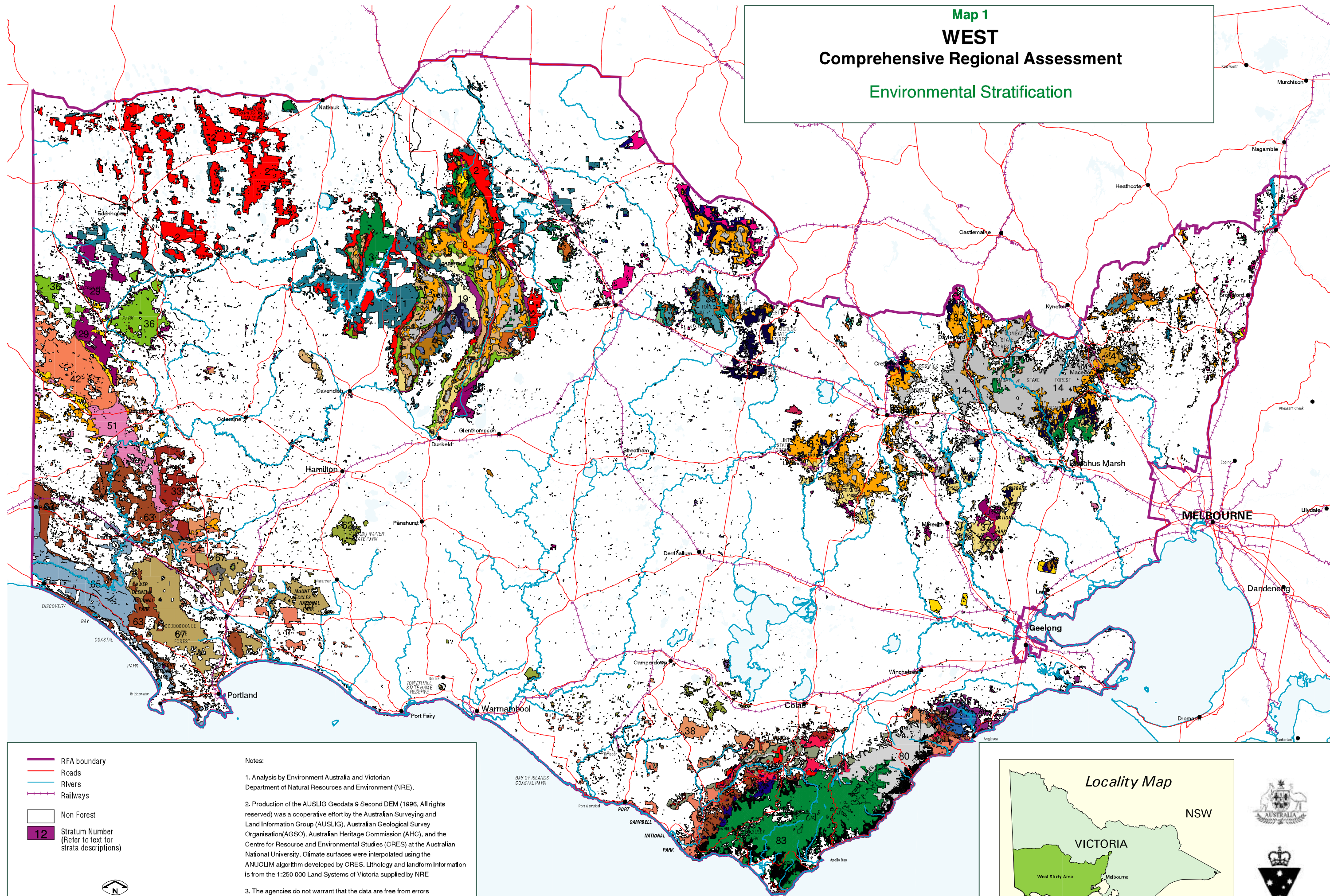


Map 1  
**WEST**  
 Comprehensive Regional Assessment  
 Environmental Stratification



Notes:

1. Analysis by Environment Australia and Victorian Department of Natural Resources and Environment (NRE).
2. Production of the AUSLIG Geodata 9 Second DEM (1996, All rights reserved) was a cooperative effort by the Australian Surveying and Land Information Group (AUSLIG), Australian Geological Survey Organisation (AGSO), Australian Heritage Commission (AHC), and the Centre for Resource and Environmental Studies (CRES) at the Australian National University. Climate surfaces were interpolated using the ANUCLIM algorithm developed by CRES. Lithology and landform information is from the 1:250 000 Land Systems of Victoria supplied by NRE.
3. The agencies do not warrant that the data are free from errors and will not accept any liability for loss, damage or injury which may be suffered by the user from the use of these data.

