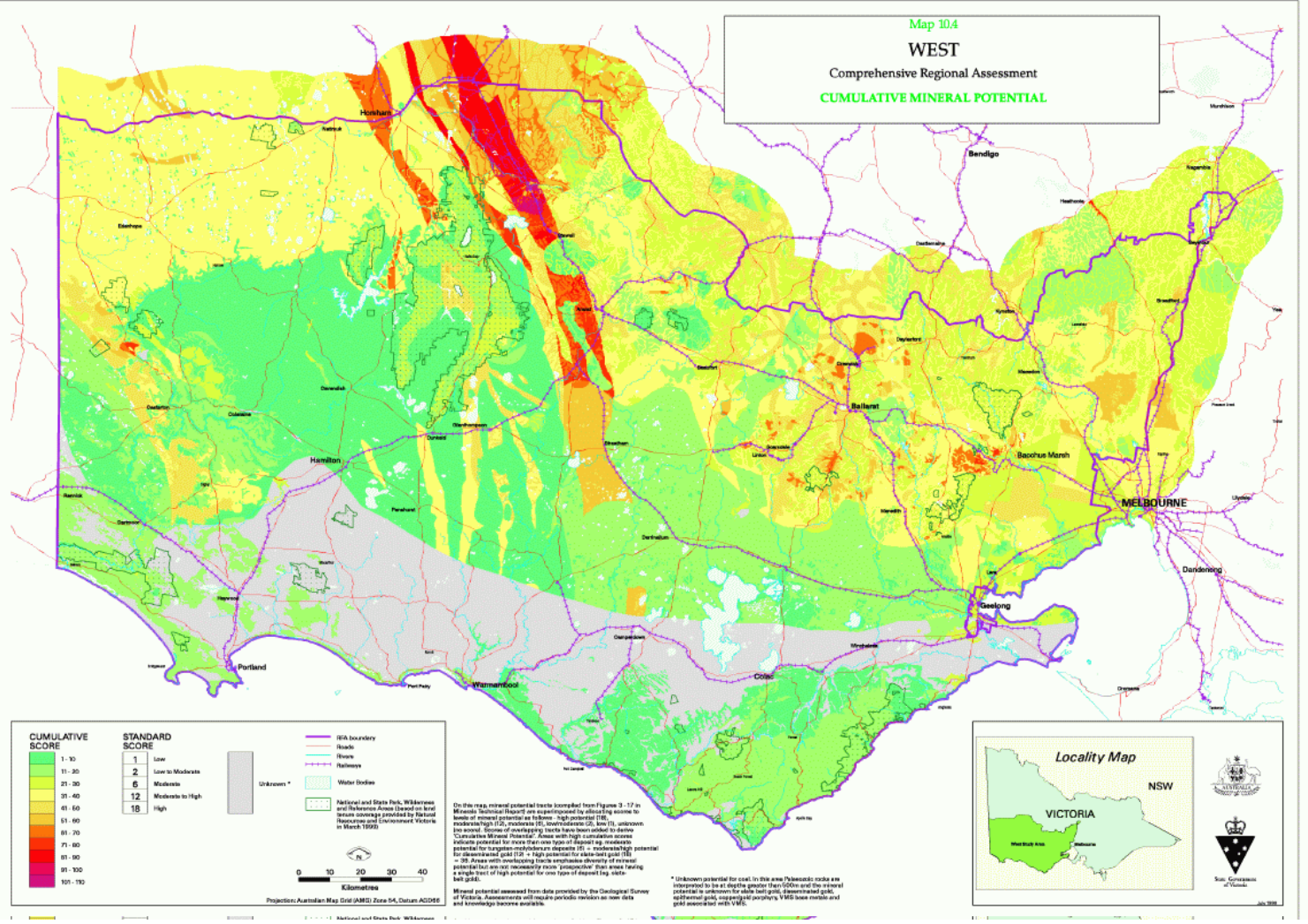


Map 10.4
WEST
 Comprehensive Regional Assessment
CUMULATIVE MINERAL POTENTIAL



CUMULATIVE SCORE	STANDARD SCORE
1-10	1 Low
11-30	2 Low to Moderate
31-38	3 Moderate
39-40	4 Moderate to High
41-60	5 High
61-70	
71-80	
81-90	
91-100	
101-120	

- RFA boundary
 - Roads
 - Rivers
 - Railways
 - Water bodies
 - National and State Parks, Wilderness and Recreation Areas (based on land tenure coverage provided by National Geographic and Environment Victoria in March 1993)

Unknown *

0 10 20 30 40
 Kilometres

Projection: Australian Map Grid (AMG) Zone 54, Datum: AGD55

On this map, mineral potential scores compiled from Figures 3-17 in Mineral Technical Report¹ are expressed by allocating scores to levels of mineral potential as follows: high potential (10), moderate-high (15), moderate (20), moderate-low (25), low (30), unknown (no score). Scores of overlapping tenets have been added to derive Cumulative Mineral Potential. Areas with high cumulative scores indicate potential for areas that are highly targeted by mineral potential for tungsten-molybdenum deposits (5 = moderate/high potential for tungsten-molybdenum deposits (5) + high potential for silver-gold (5) = 10). Areas with overlapping tenets emphasize diversity of mineral potential but are not necessarily more 'prospective' than areas having a single tenet of high potential for one type of deposit (eg. silver-gold only).

Mineral potential assessed from data provided by the Geological Survey of Victoria. Assessments will require periodic reviews as new data and knowledge become available.

* Unknown potential for coal in this area (Woodsieads rocks are interpreted to be at depths greater than 500m and the mineral potential is unknown for silver-lead-zinc, silver-molybdenum, gold, and iron-gold, copper-gold, and copper's VMS base metals and gold associated with VMS).

Locality Map

NSW

VICTORIA

West Coast Area

State Government of Victoria